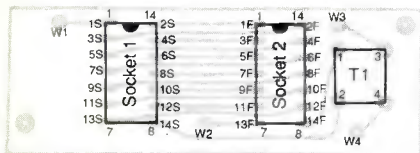


Communications Feedback

• In reading over my “AM Broadcast-Band Loop Antenna” (September 1987) article, I noted a couple of errors. The first is in the fifth line of the third column on page 56, which should read “maximize” instead of “minimize”; on page 60, the second sentence should read “the ungrounded side,” instead of “the grounded side.” The other is in the Fig. 9



nS = Conductor number Start
nF = Conductor number Finish

wiring guide, the corrected version shown here. Note also that the etching-and-drilling guide is shown from the *component* side and must be flopped before using it to make a pc board. Also, it should be understood that under “Checkout and Use,” the antenna circuit (points W3 and W4) must be directly connected

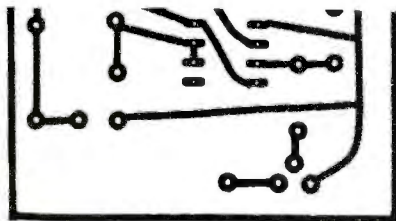
(temporarily) to the receiver’s external antenna and ground terminals.

Brad Thompson

A Visual Difference

• I am interested in building the “Audible Target” (September 1987), but am confused by the differences between the schematic diagram and wiring guide. In one or the other, C1 appears to be in the wrong place. Can you please tell me which is incorrect and what must be done to correct it?

Robert E. Merrick
Thornton, PA



The schematic is correct. In the wiring guide, C1 should be installed in the two holes shown to the left of R1 and there

should be a jumper wire installed in the holes that are now labeled C1. Also, there is a slight error in the etching-and-drilling guide. The affected lower portion of the guide is shown corrected here.—Ed.

Two to Tango

• I am very interested in your article by Walter Schopp on EPROMs. The issue I have is part 2. Do I need the previous issue to make the programmer? A lot of questions need to be answered. This was my first time reading ME. I think the magazine is great and very helpful! The articles are informative and very friendly. I have already ordered my subscription. Keep up the good work. If I need the back issue to complete the programmer, do I order it directly from you?

Brian Reid

Fort Washington, MD

Yes, you must have Part 1 (Feb. 1987), which describes construction of the basic EPROM programmer upon which Part 2 is based. Back issues are available at this office for \$2.50 each.—Ed.