

New Type SIGNAL TRACER



Serviceman employing the CA-11 signal tracer to check receiver.

By **SHEPARD S. LITT, 2LCC**
Superior Instruments Co.

Design of a highly sensitive and portable signal tracer. Simplicity of operation makes this tester ideal for home receiver repair—an important factor to servicemen.



Commercially constructed unit.

IN THE design of an efficient signal tracer, several points must be borne in mind. It must be sensitive, small, portable if possible, and not load or detune a circuit. In the past, signal tracers consisted of diode-vacuum tube voltmeter combinations with additional amplifiers (often tuned for radio frequencies) that were quite efficient, but bulky. It would take almost as long to set up one of these signal tracers with its maze of special cables as it did to find the trouble in a receiver. Because of the tuned amplifiers, these signal tracers would also require tuning. While a tuned amplifier is very efficient, a slight shift in signal frequency would mean retuning and sometimes actually losing the signal. For these reasons, signal tracers never did enjoy the amount of popularity that they should have.

Most of the objections to the older type signal tracer are eliminated by the new model CA-11 signal tracer manufactured by the *Superior Instruments Co.* and described herein. No tuned circuits are used and there is only one connecting cable.

The circuit used is a 1T4 tube in a grid-leak vacuum tube voltmeter circuit, with provisions for insertion of phones.

The detector probe is composed of the 1T4 tube connected as a triode (screen grid and plate tied together)

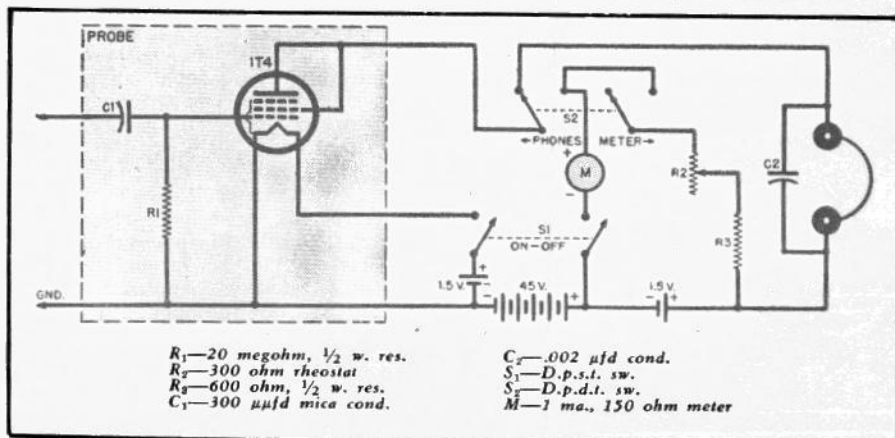
and a .0003 μ fd. condenser and 20 megohm resistor. Both the .0003 μ fd. condenser and 20 megohm resistor serve a dual purpose. D.c. is prevented from being applied to the grid of the 1T4 tube by the capacitor, which acts as a blocking condenser, while the resistor acts as a grid return and bias resistor. The condenser-resistor combination also operates to attenuate the lower frequencies, those below approximately 300 cycles. This cut-off frequency was chosen for several reasons.

Should a large 60 cycle or 120 cycle

hum be superimposed on the signal, the low hum frequency would not mask the higher signal frequency. 400 cycles is also the usual modulating frequency of signal generators and it was, therefore, thought advisable to have the vacuum tube voltmeter pass this frequency. The graph (Fig. 3) shows the exact voltage required for full-scale deflection of the v.t.v.m. for the audio spectrum. It should be noted that the meter is not calibrated for voltage, but rather in relative signal value. V.t.v.m. sensi-

(Continued on page 132)

Fig. 1. Schematic diagram of the single-tube signal tracer. The unit is constructed in two separate parts, a detector probe and the battery and meter box.



New Type Signal Tracer

(Continued from page 31)

tivity is 1.8 volts full scale from 250 c.p.s. to well past the aural range of 10,000 c.p.s. Below 250 cycles, the sensitivity of the voltmeter is reduced because of the high-pass filter, the sensitivity at 120 cycles being 2.2 volts full scale and dropping to 5.4 volts at 60 cycles. The sensitivity at 40 cycles is even less and although it doesn't appear on the graph, the voltage required for full-scale deflection at this frequency is in the vicinity of 15 volts.

Sensitivity of the probe at the radio frequencies is shown in Fig. 2. It should be noted that the frequency response is flat to 10 mc. Above this point, resonance takes place in the tube and

associated parts tending to increase the sensitivity at 15 mc. The sensitivity then takes a decided drop past 20 mc. At 40 mc., the probe requires 1.3 volts to obtain one scale deflection on the meter. Although the probe is essentially flat to 10 mc., the loading on the circuit increases as the frequency is increased. The useful range is to approximately 10 mc. Above 10 mc., loading is excessive due to the material used in the probe.

The remainder of the instrument consists of the battery box, meter, and balancing control. A 45 volt battery is used to supply plate voltage for the 1T4, with a 1½ volt cell taking care of the filament voltage. One of the characteristics of this type of v.t.v.m. is the large idling current. This is caused by the lack of grid bias. When a signal is applied to the

