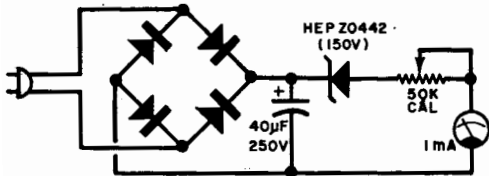


## Checking on the Energy Crisis

**Q.** *With the utilities cutting their power due to the energy crisis, I keep wondering just what my line voltage is. However, my VOM is needed for other purposes—besides it is difficult to read minor changes in the power-line voltage. What would you suggest?*



**A.** Try the 115-to-125-volt power line monitor shown above. Calibration is performed by using an accurate ac meter. The scale on the 1-mA meter can be redrawn to fit. Any type of silicon rectifier diode can be used in the bridge.