

Condenser ANALYZER

Wired & Calibrated

FEATURES

- Checks Condensers, leakage, opens, shorts
- Checks resistors up to five megohms
- Direct reading large scale
- Accurate stable bridge type circuit

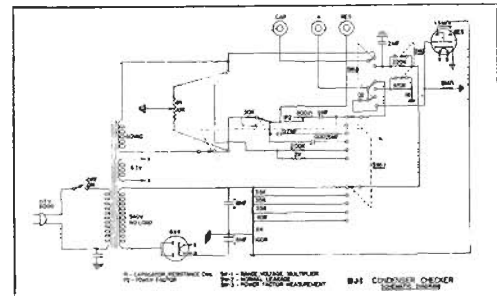
The STARKIT Model BJ-1 is a stable accurate bridge type circuit capable of measuring capacity, leakage, opens, resistance, shorts or intermittent conditions. The unit is wired by factory trained operators and designed especially for the exacting technician. The critical resistors used in the BJ-1 are highly stable deposited carbon which offers stability and reliability throughout the entire normal life of the unit.

This Condenser Analyzer measures capacity from .00001MF to 1000 MF in four ranges; Resistance from 100 ohms to five megohms in two ranges; tests for leakage with application of voltages from 25 to 450 volts in five steps and also tests for power factor from 0 to 50%.

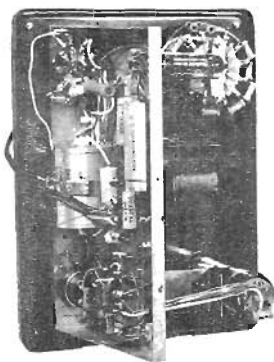
The STARKIT Model BJ-1 is housed in an attractive steel case with rounded corners and neat gray finish. A sturdy leather carrying handle is securely attached to the top of the cabinet for ease of portability. All operating controls are located on the front panel to allow the operator the maximum in working efficiency. Each control is clearly marked as to its function with the lettering being deeply etched into the panel for life time use. With the magic eye set to maximum all readings can be read directly off the deep-etched dial. Your best buy is STARKIT . . . the most in quality for the least in cost.



STARKIT MODEL BJ-1



Specifications



INTERIOR VIEW

The BJ-1 packs a neatly wired, easily accessible circuitry into a mere 9-3/8" x 7-1/8" x 5-1/4" . . . truly top value for such small bench space.

CAPACITY TEST

4 ranges: .00001 mfd to .005 mfd; .001 mfd to .5 mfd; .1 mfd to 50 mfd; 20 mfd to 1000 mfd.

LEAKAGE

Tested to voltages of: 25, 150, 250, 350, 450 VDC

RESISTANCE TEST

2 ranges: R: 100 ohms to 50K ohms; RX100: 10K to 5 Meg.

POWER FACTOR

Reads from 0 to 50%

IMPORTED

CONTROLS

Measurement dial Capacity-Resistance
Power Factor: 0-50%
Range switch: Capacity - Resistance-leakage test voltage
Function switch: Normal-leakage
Balance indicator: Magic Eye

LEAKAGE TEST

To provide the maximum in condenser checking ability, the STARKIT Model BJ-1 is engineered to test leakage at the various voltages generally encountered in servicing . . . selector switch controlled in five voltage ranges from 25 to 450 VDC.

POWER REQUIREMENTS

105-125 volts AC, consumption 8VA at 115 volts.

TUBE COMPLEMENT

1-6x4 rectifier, 1-6E5 detector magic eye

POWER SUPPLY

Transformer operated 6x4 half wave rectifier

SIZE & WEIGHT

9-3/8" x 7-1/8" x 5-1/4"
Net 6 lbs. 13 oz.
Ship. 8 Lbs.

E2028G9

STARK

