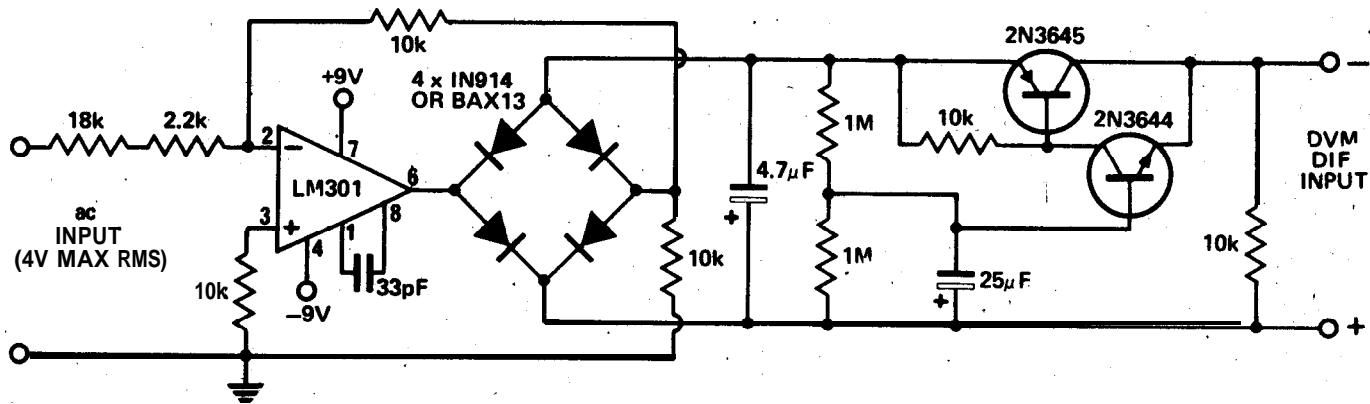


MEASURING RMS VALUE OF AC WITH A DC DVM



The above circuit may be used for measuring the RMS value of ac (sinewave) with a dc digital voltmeter. It has a frequency response to beyond 10 kHz and will measure signals as

low as 400 mV. The error rises at low frequencies, somewhat below 50 Hz, to about 4% mean. The LM301 supply may be as low as $\pm 4V$, or up to $\pm 15V$, if desired, with reduce

sensitivity at the lower voltage.

The DVM input must be floating and a differential input is required. To increase the input range a step attenuator may be used.