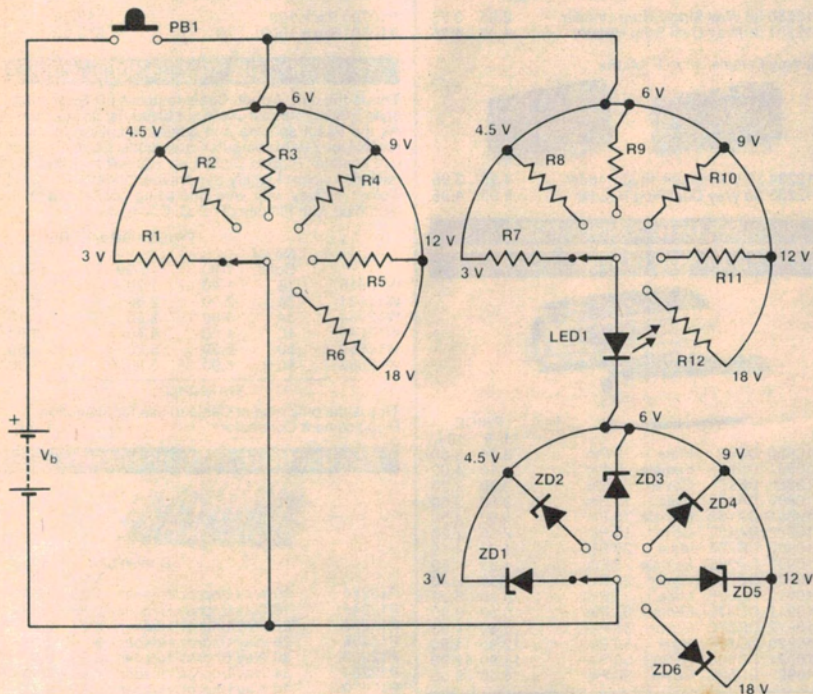


Modification to battery condition indicator



Jerry Stamatelatos of St Kilda Victoria has come up with a modification for the battery condition indicator circuit which appeared in ETI Circuits No 4 on page 70.

The modification is based on the addition of three rotary switches which provide a selection of six voltages.

Resistors

.....	all 1/4 W, 5%
R1	270R
R2,R12	390R
R3	470R
R4	820R
R5	1k
R6	1k5
R7	68R
R8	100R
R9	120R
R10	180R
R11	220R

Semiconductors

ZD1	0V7*
ZD2	2V1*
ZD3	3V3
ZD4	5V6
ZD5	8V2
ZD6	13 V

*For these low zener voltages, use one or more silicon diodes in series forward biased.