

Note. For 1 μs conversion time with 8-bit resolution and 7-bit accuracy, an LM361 comparator replaces the LM319 and the reference current is doubled by reducing R₁, R₂ and R₃ to 2.5 kΩ and R₄ to 2 MΩ.

Fig. 1-1. A complete 2-μs conversion time, 8-bit A/D converter (NS).

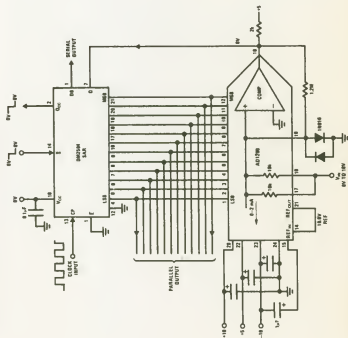


Fig. 1-2. High-speed 12-bit A/D converter (NS).

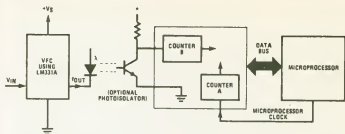


Fig. 1-4. A/D converter with a microprocessor (NS).

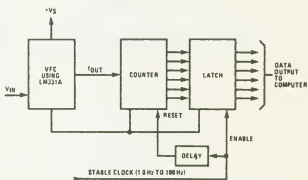


Fig. 1-5. Basic A/D converter using a voltage-to-frequency converter (NS).