

# TEMPERATURE SENSOR AND ADJUSTABLE CURRENT SOURCE LM334 (276-1734)

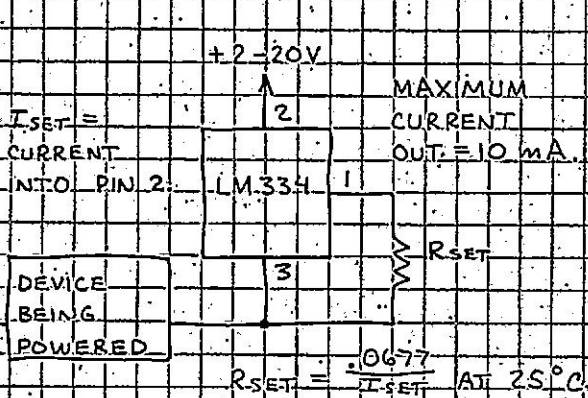
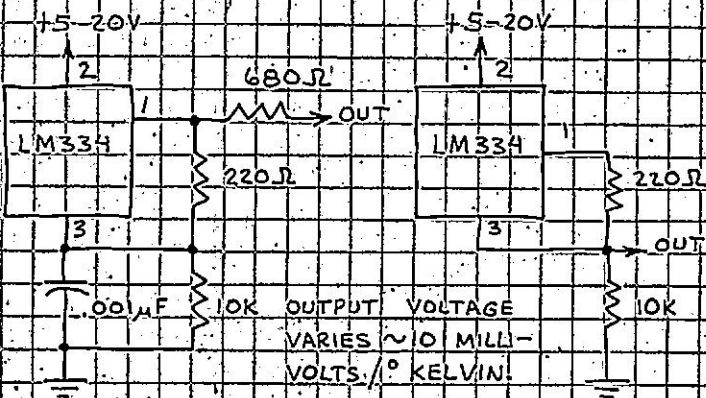
VERSATILE, 3-LEAD COMPONENT THAT LOOKS MORE LIKE A TRANSISTOR THAN AN IC. CAN BE USED AS A TEMPERATURE SENSOR, CURRENT SOURCE FOR LEDs AND OTHER COMPONENTS OR CIRCUITS, VOLTAGE REFERENCE, ETC.



1 = R  
2 = +V  
3 = -V (GND)

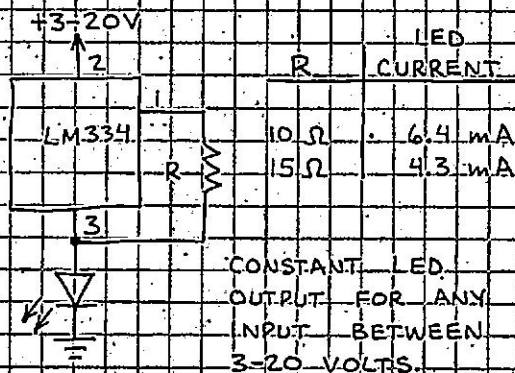
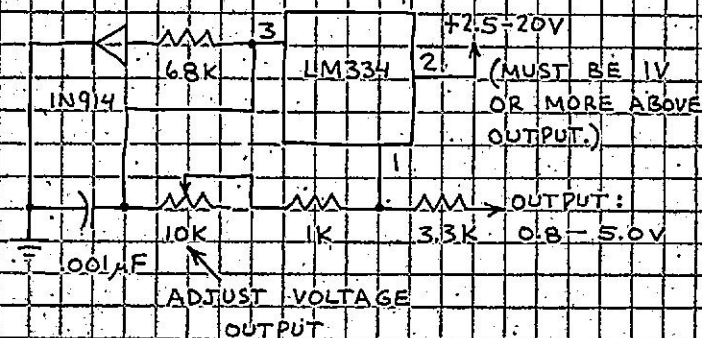
## BASIC THERMOMETERS

## BASIC CURRENT SOURCE



## VOLTAGE REFERENCE

## CALIBRATED LED



## RAMP GENERATOR

## LIGHT METER

