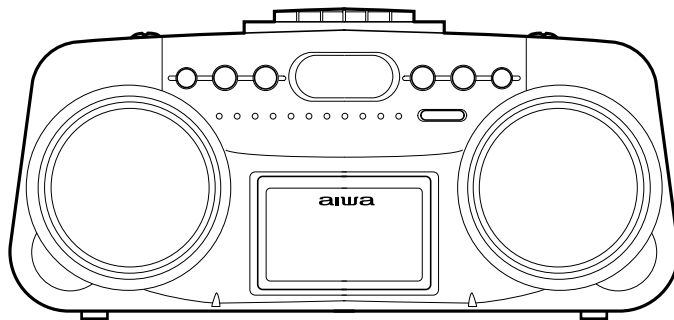




CSD-A210 CSD-A230

HT

HE



SERVICE MANUAL

COMPACT DISC STEREO
RADIO CASSETTE RECORDER

BASIC TAPE MECHANISM : ZM-1 R2NC2
BASIC CD MECHANISM : DA11T3C

- This Service Manual contains information about the difference between CSD-A210 (HT) / A230 (HE) and CSD-A210 (HR). If requiring the other information, see Service Manual of CSD-A210 (HR), (S/M Code No. 09-007-427-8R2).

aiwa
S/M Code No. 09-008-427-8S1

SUPPLEMENT
DATA

SPECIFICATIONS

Tuner section

Frequency range

FM : 87.5 MHz - 108.0 MHz
Antenna : Rod antenna

AM : 530 kHz - 1,605 kHz
Antenna : Ferrite bar antenna

Deck section

Track format

Frequency range

Recording system

Erasing system

Heads

4 tracks, 2 channels
Normal tape : 50 Hz - 12,500 Hz (EIAJ)
AC bias
Magnet erase
Recording/Playback head x 1/
Erasure head x 1

CD player section

Disc

Scanning method

Compact disc
Non-contact optical scanner
(semiconductor laser)

General

Speaker

Output

Power output

100 mm cone type (2)
Headphones jack (stereo mini-jack)
HT: 2.5 W + 2.5 W
(EIAJ 7 ohms, THD 10%)
HE: 4.5 W + 4.5 W
(EIAJ 3.2 ohms, THD 10%)
HT: 1.9 W + 1.9 W (DIN 1% Rated Power)
HE: 3.3 W + 3.3 W (DIN 1% Rated Power)
DC 12 V using eight size C (R14) batteries,
AC 110 - 120 V/220 - 240 V
switchable, 50/60 Hz
HT: 16 W
HE: 22 W
HT: 435 x 184 x 277 mm
HE: 445 x 184 x 277 mm
HT: 3.7 kg (excluding batteries)
HE: 3.9 kg (excluding batteries)

Power requirements

Power consumption

Dimensions

(W x H x D)

Weight

• Design and specifications are subject to change without notice.

ACCESSORIES / PACKAGE LIST

| REF. NO. | PART NO. | KANRI NO. | DESCRIPTION |
|----------|----------------|--------------------------|-------------|
| 1 | 8A-CD9-901-010 | IB, H (ECA) B<HT> | |
| 1 | 8A-CD9-911-010 | IB, H (E) I-KIT<HE> | |
| △ 2 | 87-A80-081-010 | AC CORD SET ASSY, EZ BLK | |

ELECTRICAL MAIN PARTS LIST

| REF. NO. | PART NO. | KANRI NO. | DESCRIPTION | REF. NO. | PART NO. | KANRI NO. | DESCRIPTION |
|------------|----------------|----------------|------------------------|----------|----------------|-----------|-------------------------|
| IC | | | | | | | |
| | 87-A20-955-010 | | IC, LA1828 | C821 | 87-010-401-080 | | CAP, ELECT 1-50V |
| | 87-A21-064-010 | | IC, LA4227 | C822 | 87-010-401-080 | | CAP, ELECT 1-50V |
| | 87-A21-520-040 | | C-IC, M61509FP | C823 | 87-010-178-080 | | CHIP CAP 1000P |
| | 87-A20-446-010 | | C-IC, LA9241ML | C824 | 87-010-178-080 | | CHIP CAP 1000P |
| | 87-A20-459-010 | | C-IC, LC78622ED | C829 | 87-010-178-080 | | CHIP CAP 1000P |
| | 87-A21-093-010 | | IC, LA6541D | C830 | 87-010-178-080 | | CHIP CAP 1000P |
| | 8A-CD9-610-010 | | C-IC, LC865516A-5L26 | C834 | 87-010-248-080 | | CAP, ELECT 220-10V |
| | 87-A21-431-010 | | IC, BA4560N | C843 | 87-010-197-080 | | CAP, CHIP 0.01 DM |
| | | | | C844 | 87-018-124-080 | | CAP, CER 270P-50V |
| | | | | C845 | 87-010-178-080 | | CHIP CAP 1000P |
| TRANSISTOR | | | | C846 | 87-010-263-080 | | CAP, ELECT 100-10V |
| | 89-327-143-080 | | TR, 2SC2714 (O) (0.1W) | C851 | 87-010-186-080 | | CAP, CHIP 4700P |
| | 87-026-463-080 | | TR, 2SA933SS (0.3W) | C852 | 87-010-178-080 | | CHIP CAP 1000P |
| | 87-026-213-080 | | CHIP-TR, DTC114YK | C853 | 87-A11-145-080 | | CAP, TC U 0.01-50 |
| | 89-112-965-080 | | TR, 2SA1296GR (0.75W) | CN201 | 87-099-018-010 | | CONN, 16P |
| | 87-026-291-080 | | TR, DTC124XS | CN801 | 87-A60-110-010 | | CONN, 4P V S2M-4W |
| | 89-213-702-080 | | TR, 2SB1370E | CNA302 | 8A-CD9-629-010 | | CONN ASSY, 6P MA-TU |
| | 89-318-154-080 | | TR, 2SC1815Y (0.4W) | FC201 | 8A-CD9-620-010 | | FF-CABLE, 16P FR-MAIN |
| | 89-113-187-080 | | TR, 2SA1318TU | JW108 | 87-003-097-080 | | COIL, 1.0UH K LAL02 |
| | 87-026-239-080 | | C-TR, DTC114TK | JW132 | 87-003-097-080 | | COIL, 1.0UH K LAL02 |
| | 87-A30-435-040 | | C-TR, DTC144EKA | JW133 | 87-003-097-080 | | COIL, 1.0UH K LAL02 |
| | 87-026-215-010 | | TR, DTC114YS | L801 | 87-007-342-010 | | COIL, OSC 85K BIAS |
| | 89-317-403-080 | | TR, 2SC1740SS | SW801 | 8Z-CD9-609-010 | | SW, SL 1-6-2 PS62D01 |
| | 87-026-464-080 | | TR, DTC114TS (0.3W) | CD C.B | | | |
| | 87-026-462-080 | | TR, 2SC1740SRS | | | | |
| DIODE | | | | C30 | 87-010-260-080 | | CAP, ELECT 47-25V |
| | 87-020-465-080 | | DIODE, 1SS133 (110MA) | C251 | 87-010-404-080 | | CAP, ELECT 4.7-50V |
| | 87-027-703-080 | | ZENER, HZ7A1L | C263 | 87-010-178-080 | | CHIP CAP 1000P |
| | 87-070-345-080 | | DIODE, 1N4148 | C264 | 87-010-178-080 | | CHIP CAP 1000P |
| | 87-A40-648-080 | | ZENER, MTZJ8.2A | C265 | 87-010-263-080 | | CAP, ELECT 100-10V |
| | 87-A40-234-080 | | ZENER, MTZJ5.6A | C266 | 87-010-263-080 | | CAP, ELECT 100-10V<HT> |
| | 87-017-978-080 | | DIODE, 1N4003 | C266 | 87-010-545-080 | | CAP, ELECT 0.22-50V<HE> |
| | 87-027-702-080 | | DIODE, ZENER MTZJ6.2C | C267 | 87-010-112-080 | | CAP, ELECT 100-16V<HT> |
| | 87-A40-465-010 | | DIODE, FR202 | C267 | 87-010-545-080 | | CAP, ELECT 0.22-50V<HE> |
| | 87-A40-337-080 | | ZENER, MTZJ6.8B | C268 | 87-010-112-080 | | CAP, ELECT 100-16V |
| MAIN C.B | | | | C271 | 87-010-221-080 | | CAP, ELECT 470-10V |
| | C211 | 87-A11-693-080 | C-CAP, 0.15-25V | C272 | 87-010-221-080 | | CAP, ELECT 470-10V |
| | C212 | 87-A11-693-080 | C-CAP, 0.15-25V | C278 | 87-010-405-080 | | CAP, ELECT 10-50V<HT> |
| | C215 | 87-016-460-080 | C-CAP, S 0.22-16 B | C278 | 87-010-263-080 | | CAP, ELECT 100-10V<HE> |
| | C216 | 87-016-460-080 | C-CAP, S 0.22-16 B | C279 | 87-010-385-080 | | CAP, ELECT 220-25V |
| | C231 | 87-010-213-080 | C-CAP, S 0.015-50 B | C279 | 87-010-263-080 | | CAP, ELECT 100-10V<HE> |
| | C232 | 87-010-213-080 | C-CAP, S 0.015-50 B | C301 | 87-016-495-000 | | CAP, E 3300-25 M SMG |
| | C233 | 87-A10-201-080 | C-CAP, S0.33-16 KB | C306 | 87-010-404-080 | | CAP, ELECT 4.7-50V |
| | C234 | 87-A10-201-080 | C-CAP, S0.33-16 KB | C307 | 87-010-401-080 | | CAP, ELECT 1-50V |
| | C235 | 87-016-669-080 | C-CAP, S 0.1-25 K B | C308 | 87-010-221-080 | | CAP, ELECT 470-10V |
| | C236 | 87-016-669-080 | C-CAP, S 0.1-25 K B | C311 | 87-010-404-080 | | CAP, ELECT 4.7-50V |
| | C237 | 87-010-371-080 | CAP, E 470-6.3 M SME | C312 | 87-010-385-080 | | CAP, ELECT 220-25V |
| | C239 | 87-010-197-080 | CAP, CHIP 0.01 DM | C321 | 87-010-197-080 | | CAP, CHIP 0.01 DM |
| | C240 | 87-010-197-080 | CAP, CHIP 0.01 DM | C322 | 87-010-263-080 | | CAP, ELECT 100-10V |
| | C247 | 87-010-401-080 | CAP, ELECT 1-50V | C325 | 87-010-405-080 | | CAP, ELECT 10-50V |
| | C248 | 87-010-401-080 | CAP, ELECT 1-50V | C401 | 87-010-403-080 | | CAP, ELECT 3.3-50V |
| | C310 | 87-010-248-080 | CAP, ELECT 220-10V | C402 | 87-010-197-080 | | CAP, CHIP 0.01 DM |
| | C316 | 87-010-263-080 | CAP, ELECT 100-10V | C403 | 87-010-263-080 | | CAP, ELECT 100-10V |
| | C317 | 87-015-819-080 | CAP, CHIP 0.01-50 KB | C404 | 87-010-248-080 | | CAP, ELECT 220-10V |
| | C801 | 87-010-248-080 | CAP, ELECT 220-10V | C405 | 87-010-197-080 | | CAP, CHIP 0.01 DM |
| | C805 | 87-012-365-080 | C-CAP, S 0.027-25VBK | C406 | 87-010-374-080 | | CAP, ELECT 47-10V |
| | C806 | 87-012-365-080 | C-CAP, S 0.027-25VBK | C407 | 87-010-178-080 | | CHIP CAP 1000P |
| | C807 | 87-010-405-080 | CAP, ELECT 10-50V | C408 | 87-010-198-080 | | CAP, CHIP 0.022 |
| | C808 | 87-010-405-080 | CAP, ELECT 10-50V | C409 | 87-010-248-080 | | CAP, ELECT 220-10V |
| | C809 | 87-010-401-080 | CAP, ELECT 1-50V | C410 | 87-010-263-080 | | CAP, ELECT 100-10V |
| | C810 | 87-010-401-080 | CAP, ELECT 1-50V | C411 | 87-A11-177-080 | | C-CAP, S 0.15-16 K B |
| | C811 | 87-010-178-080 | CHIP CAP 1000P | C412 | 87-010-401-080 | | CAP, ELECT 1-50V |
| | C812 | 87-010-178-080 | CHIP CAP 1000P | C413 | 87-016-369-080 | | C-CAP, S 0.033-25 B K |
| | C816 | 87-010-180-080 | C-CER 1500P | C414 | 87-010-405-080 | | CAP, ELECT 10-50V |
| | C817 | 87-010-180-080 | C-CER 1500P | C416 | 87-010-545-080 | | CAP, ELECT 0.22-50V |
| | | | | C417 | 87-012-157-080 | | C-CAP, S 330P-50 CH |
| | | | | C418 | 87-010-213-080 | | C-CAP, S 0.015-50 B |
| | | | | C419 | 87-A11-608-080 | | C-CAP, S 0.33-25 K B |
| | | | | C420 | 87-016-369-080 | | C-CAP, S 0.033-25 B K |

| REF. NO. | PART NO. | KANRI NO. | DESCRIPTION | REF. NO. | PART NO. | KANRI NO. | DESCRIPTION |
|----------|----------------|-----------|--------------------------------|----------|----------------|-----------|---------------------------|
| C15 | 87-016-669-080 | | C-CAP,S 0.1-25 K B | | | | |
| C16 | 87-010-178-080 | | CHIP CAP 1000P | H.P. | C.B | | |
| C17 | 87-016-669-080 | | C-CAP,S 0.1-25 K B | CN204 | 87-A60-685-010 | | CONN,4P H WHT EH |
| C18 | 87-010-197-080 | | CAP, CHIP 0.01 D M | CN605 | 87-A60-114-010 | | CONN,4P H S2M-4WR |
| C19 | 87-016-669-080 | | C-CAP,S 0.1-25 K B | CNA203 | 8A-CD9-628-010 | | CONN ASSY,3P MA-HP |
| C20 | 87-010-400-080 | | CAP, ELECT 0.47-50V | J251 | 87-A60-569-010 | | JACK,HTJ-035-18 |
| C21 | 87-010-403-080 | | CAP, ELECT 3.3-50V | S606 | 87-A91-829-080 | | SW,TACT SKQNAED010 |
| C22 | 87-010-197-080 | | CAP, CHIP 0.01 DM | | | | |
| C24 | 87-010-189-080 | | C-CAP,S 8200-50 B | S607 | 87-A91-829-080 | | SW,TACT SKQNAED010 |
| C25 | 87-010-189-080 | | C-CAP,S 8200-50 B | S608 | 87-A91-829-080 | | SW,TACT SKQNAED010 |
| C26 | 87-016-087-080 | | C-CAP,S 0.47-16F | S614 | 87-A91-829-080 | | SW,TACT SKQNAED010 |
| C27 | 87-016-087-080 | | C-CAP,S 0.47-16F | S615 | 87-A91-829-080 | | SW,TACT SKQNAED010 |
| C28 | 87-010-992-080 | | C-CAP,S 0.047-25 B | | | | |
| C29 | 87-010-992-080 | | C-CAP,S 0.047-25 B | POWER | C.B | | |
| C30 | 87-010-248-080 | | CAP, ELECT 220-10V | C901 | 87-010-192-080 | | C-CAP,S 0.022-50 F |
| C31 | 87-010-379-080 | | CAP, ELECT 22-16V | C902 | 87-010-192-080 | | C-CAP,S 0.022-50 F |
| C32 | 87-010-197-080 | | CAP, CHIP 0.01 DM | C903 | 87-010-192-080 | | C-CAP,S 0.022-50 F |
| C33 | 87-010-197-080 | | CAP, CHIP 0.01 DM | C904 | 87-010-192-080 | | C-CAP,S 0.022-50 F |
| C34 | 87-010-197-080 | | CAP, CHIP 0.01 DM | CNA901 | 8A-CD9-627-010 | | CONN ASSY,3P PWR |
| C35 | 87-010-197-080 | | CAP, CHIP 0.01 DM | △ PR901 | 87-A90-092-080 | | PROTECTOR,2.5A 491 |
| C36 | 87-010-263-080 | | CAP, ELECT 100-10V | | | | |
| C37 | 87-010-197-080 | | CAP, CHIP 0.01 DM | BATT | C.B | | |
| C51 | 87-010-197-080 | | CAP, CHIP 0.01 DM | | | | |
| C56 | 87-010-152-080 | | C-CAP,S 8P-50 CH | VOLTAGE | C.B | | |
| CF1 | 87-A90-128-010 | | FLTR,AM IF CFAL-455 | △ SW901 | 87-A91-369-010 | | SW,AC SL 2 2 2 SDKGA41700 |
| CF2 | 87-008-261-010 | | FILTER, SFE10.7MA5-A | | | | |
| CF3 | 87-008-261-010 | | FILTER, SFE10.7MA5-A | MOTOR | C.B | | |
| CN2 | 87-A60-116-010 | | CONN,6P H S2M-6WR | | | | |
| D3 | 87-A40-128-080 | | C-VARI-CAP,HVU202A | | | | |
| L2 | 87-A50-560-010 | | COIL,FM BPF(ACD) | M2 | 9X-262-576-910 | | MOTOR GEAR ASSY |
| L3 | 8A-CD9-660-010 | | BAR-ANT,MW 2B-ACD(COI) | PIN3 | 91-564-722-110 | | CONNECTOR 6P |
| L4 | 87-A50-562-010 | | COIL,FM RF EX(ACD) | SW1 | 91-572-085-120 | | LEAF SW |
| L5 | 87-A50-564-010 | | COIL,FM OSC EX(ACD) | | | | |
| L6 | 87-A50-337-010 | | COIL,AM OSC (TOKO) | | | | |
| L7 | 87-A50-579-010 | | COIL,AM IFT(ACD) | | | | |
| L8 | 87-A50-335-010 | | COIL,FM IFT (TOKO) | | | | |
| L9 | 87-A50-577-010 | | COIL,FM DET(ACD) | | | | |
| L10 | 87-005-849-080 | | COIL,10UH(CECS) | | | | |
| PVC1 | 87-A91-167-010 | | TUN-CAP,20P-160P FA-22125 N000 | | | | |
| SW1 | 87-A91-548-010 | | SW,SL-2-3 SK23E01G06 | | | | |

○チップ抵抗部品コード/CHIP RESISTOR PART CODE

チップ抵抗部品コードの成り立ち

Chip Resistor Part Coding



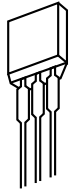
A
抵抗部品コード
Resistor Code

桁表示
Figure
抵抗値
Value of resistor

チップ抵抗
Chip resistor

| 容量 Wattage | 種類 Type | 許容誤差 Tolerance | 記号 Symbol | 寸法/Dimensions (mm) | | | 抵抗コード : A Resistor Code : A | |
|---------------|------------|-------------------|--------------|--------------------|-----|------|--------------------------------|-----|
| | | | | 外形/Form | L | W | | t |
| 1/16W | 1005 | ± 5% | CJ | | 1.0 | 0.5 | 0.35 | 104 |
| 1/16W | 1608 | ± 5% | CJ | | 1.6 | 0.8 | 0.45 | 108 |
| 1/10W | 2125 | ± 5% | CJ | | 2 | 1.25 | 0.45 | 118 |
| 1/8W | 3216 | ± 5% | CJ | | 3.2 | 1.6 | 0.55 | 128 |

TRANSISTOR ILLUSTRATION



E C B

2SA933SS
2SC1740SS
2SC1740SRS
DTC114TS
DTC124XS



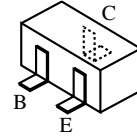
B C E

2SB1370E



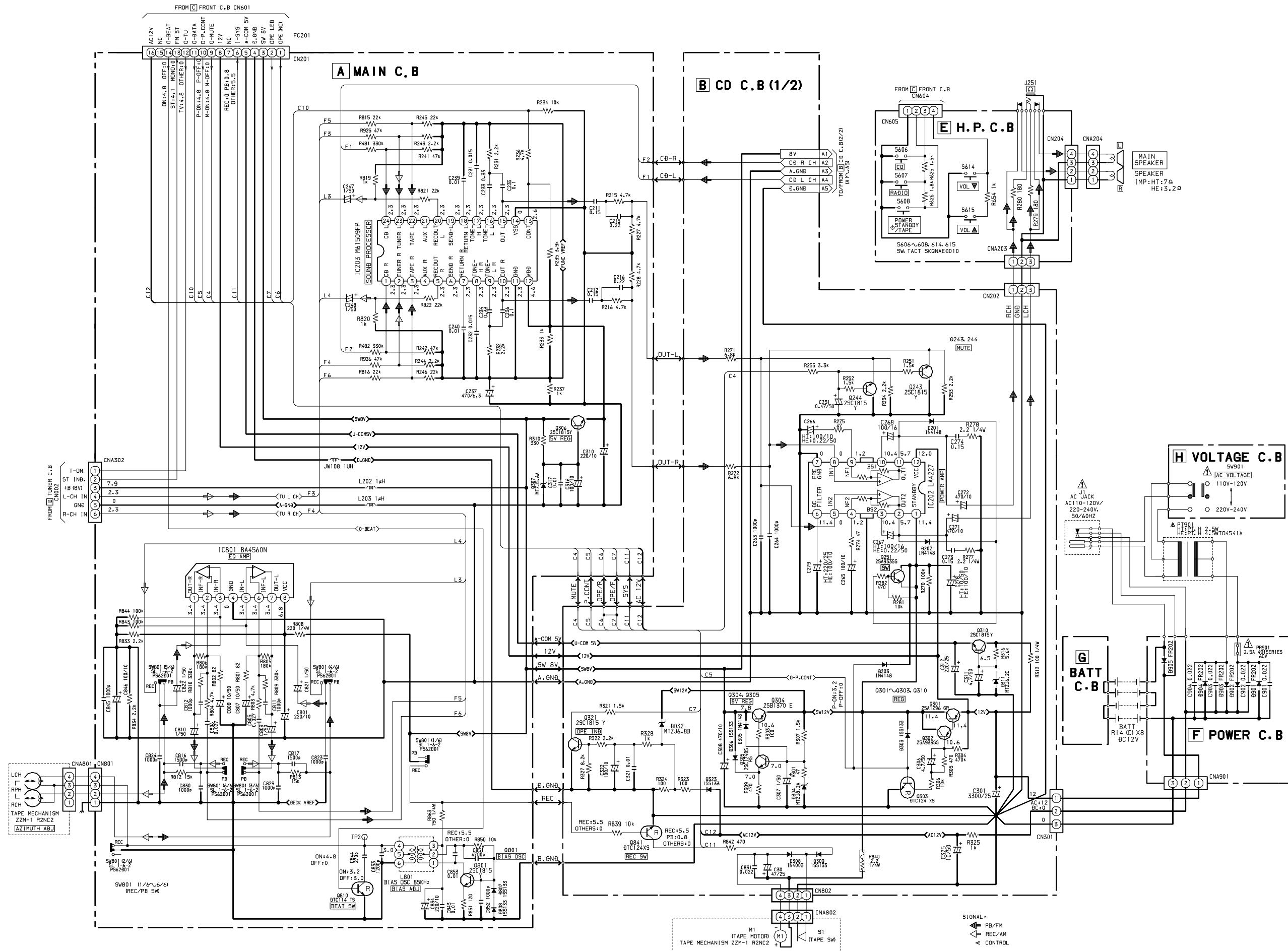
E C B

2SA1296GR
2SA1318TU
2SC1815Y



2SC2714
DTC114TK
DTC114YK
DTC114YS
DTC144EKA

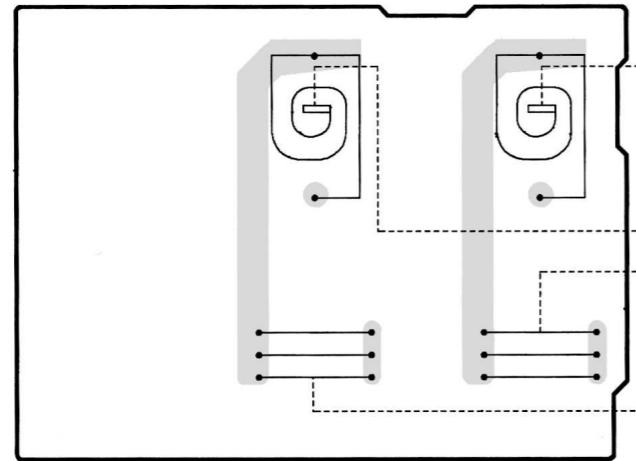
SCHEMATIC DIAGRAM - 1 (MAIN / CD : 1 / 2 / H.P. / POWER / BATT / VOLTAGE)



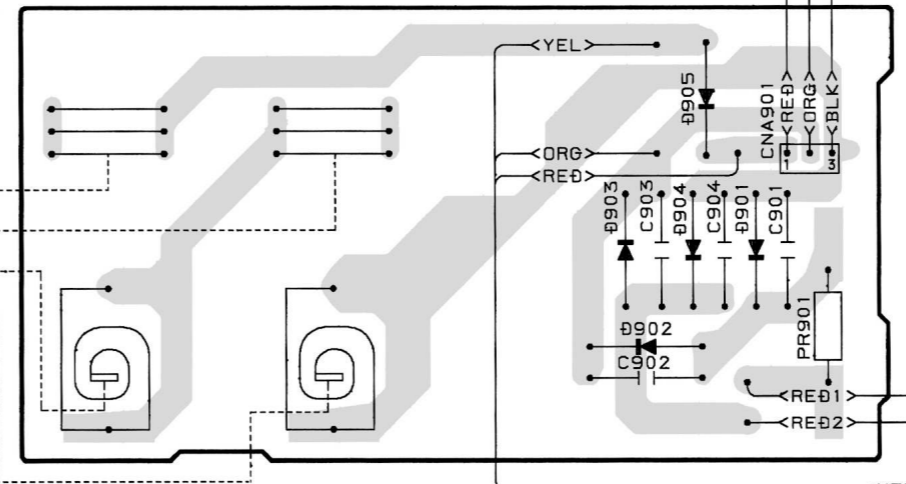
32 31 30 29 28 27 26 25 24 23 22 21 20 19 18 17 16 15 14 13 12 11 10 9 8 7 6 5 4 3 2 1

A
B
C
D
E
F
G
H
I
J
K
L
M
N
O
P
Q
R
S
T
U

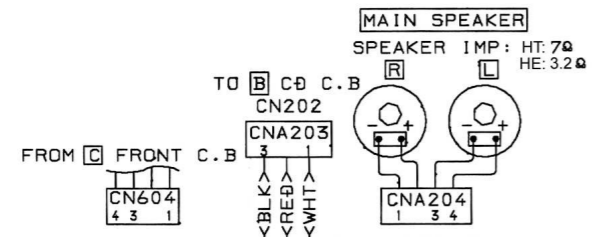
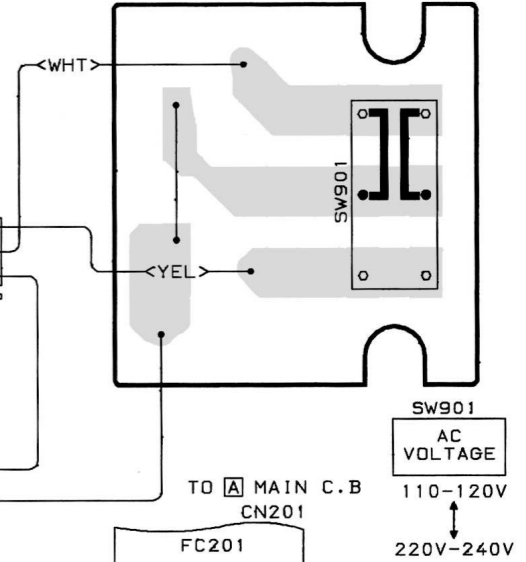
G BATT C.B



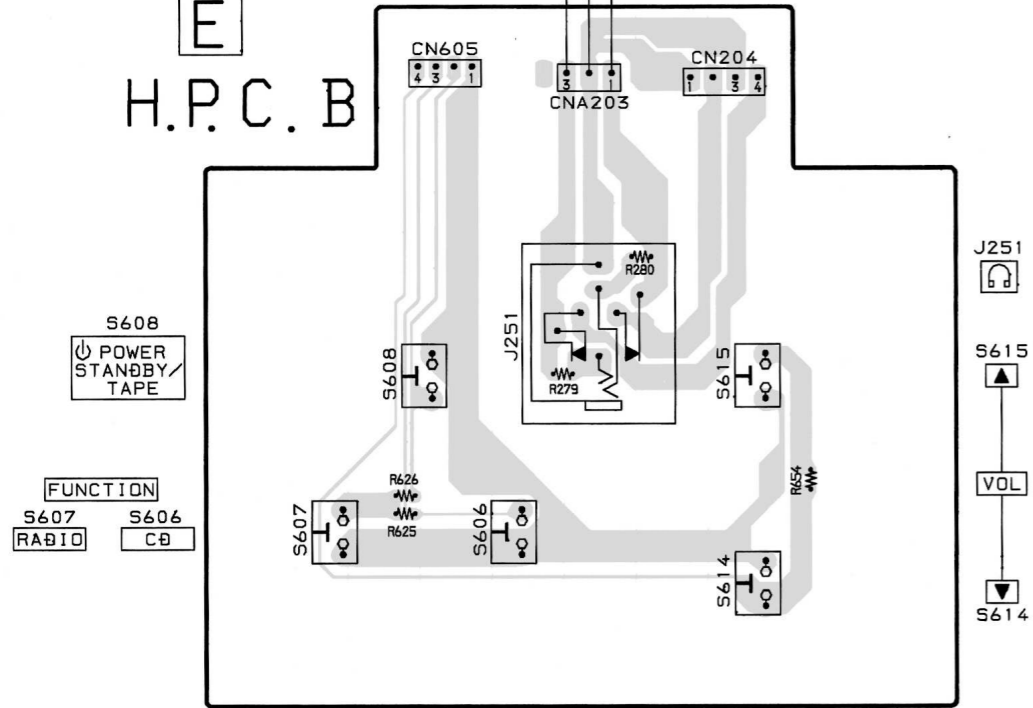
F POWER C.B



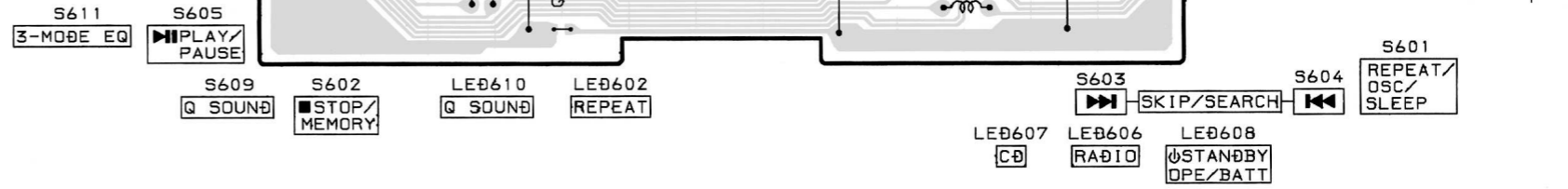
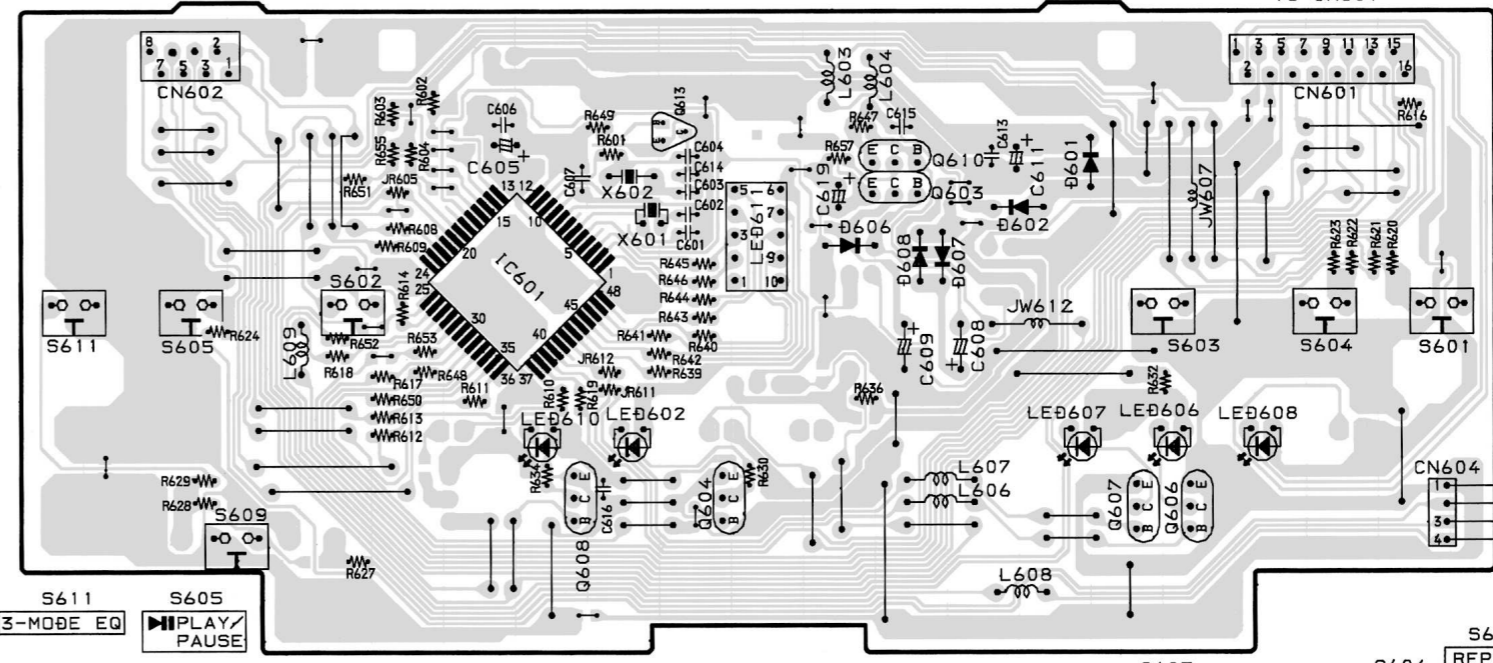
H VOLTAGE C.B



E H.P.C.B

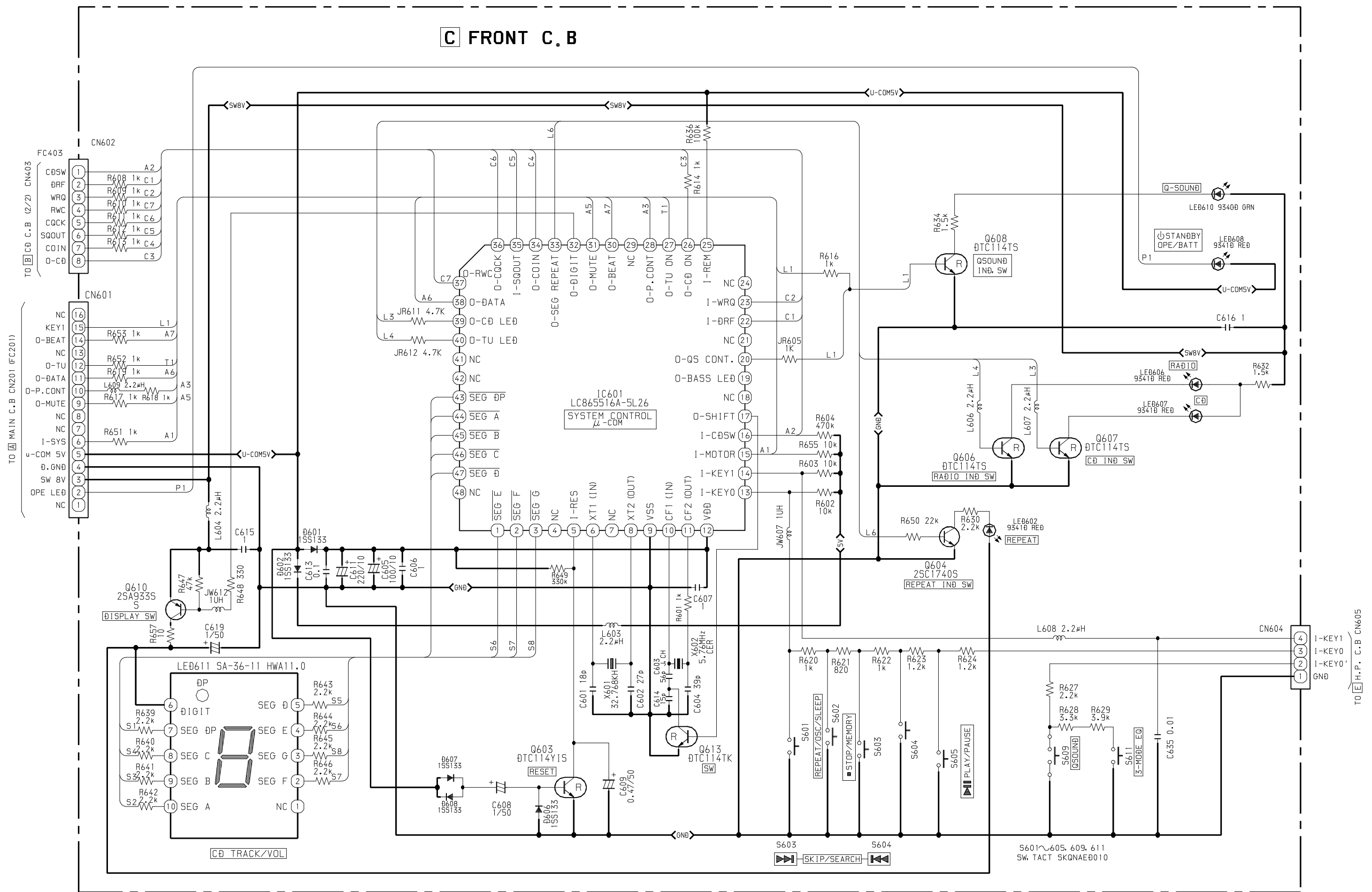


C FRONT C.B



SCHEMATIC DIAGRAM - 3 (FRONT)

C FRONT C.B

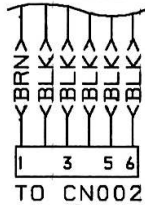


WIRING - 3 (TUNER)

| | | | | | | | | | | | | | | |
|----|----|----|----|----|----|---|---|---|---|---|---|---|---|---|
| 15 | 14 | 13 | 12 | 11 | 10 | 9 | 8 | 7 | 6 | 5 | 4 | 3 | 2 | 1 |
|----|----|----|----|----|----|---|---|---|---|---|---|---|---|---|

| |
|---|
| A |
| B |
| C |
| D |
| E |
| F |
| G |
| H |
| I |
| J |
| K |
| L |
| M |
| N |
| O |
| P |
| Q |
| R |
| S |
| T |
| U |

TO **A** MAIN C.B
CNA302

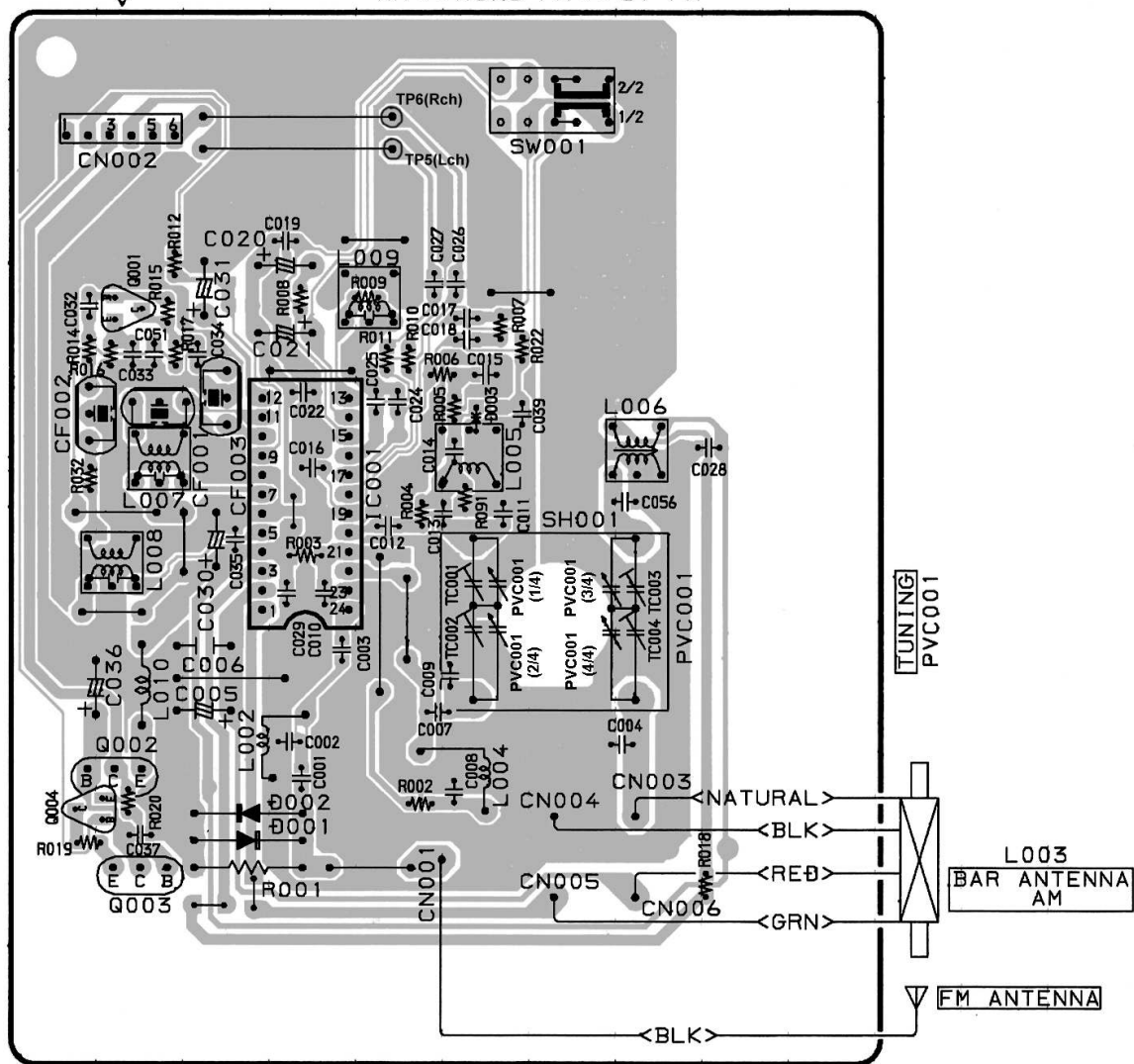


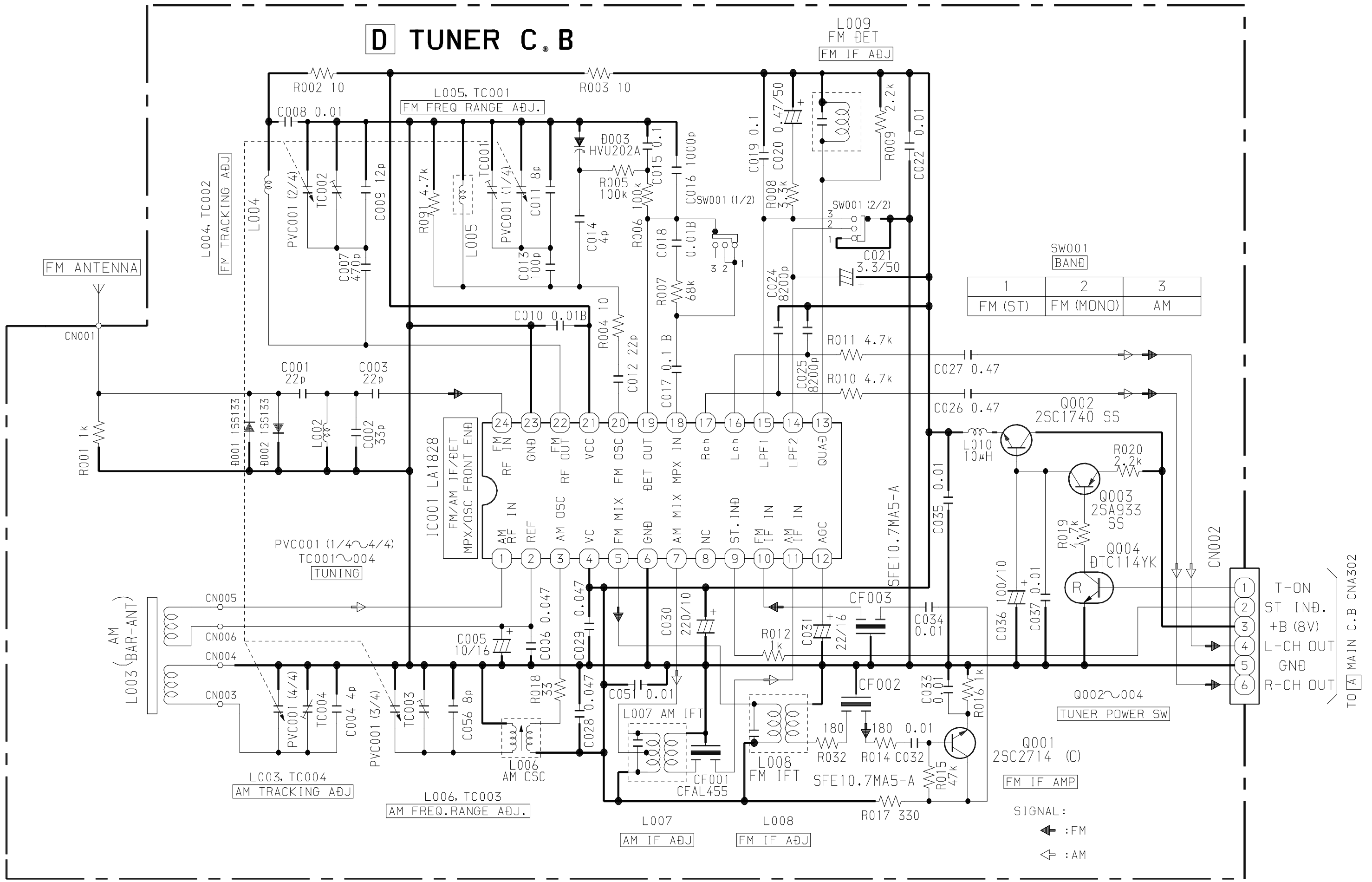
TUNER C. B

SW001

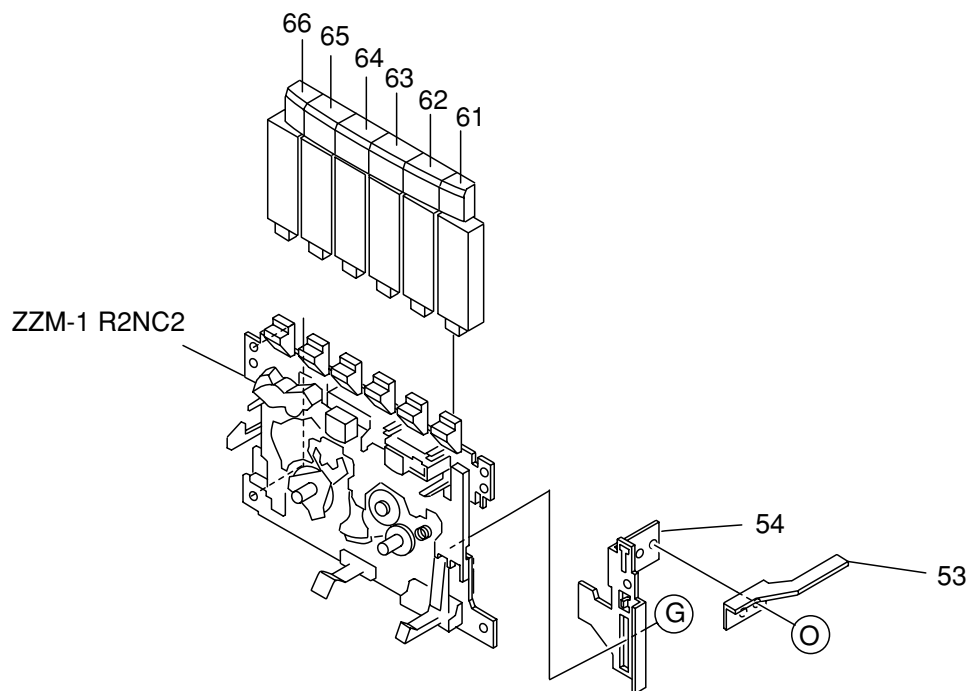
BAND

AM ↔ MONO FM ↔ ST FM





MECHANICAL EXPLODED VIEW 1 / 1



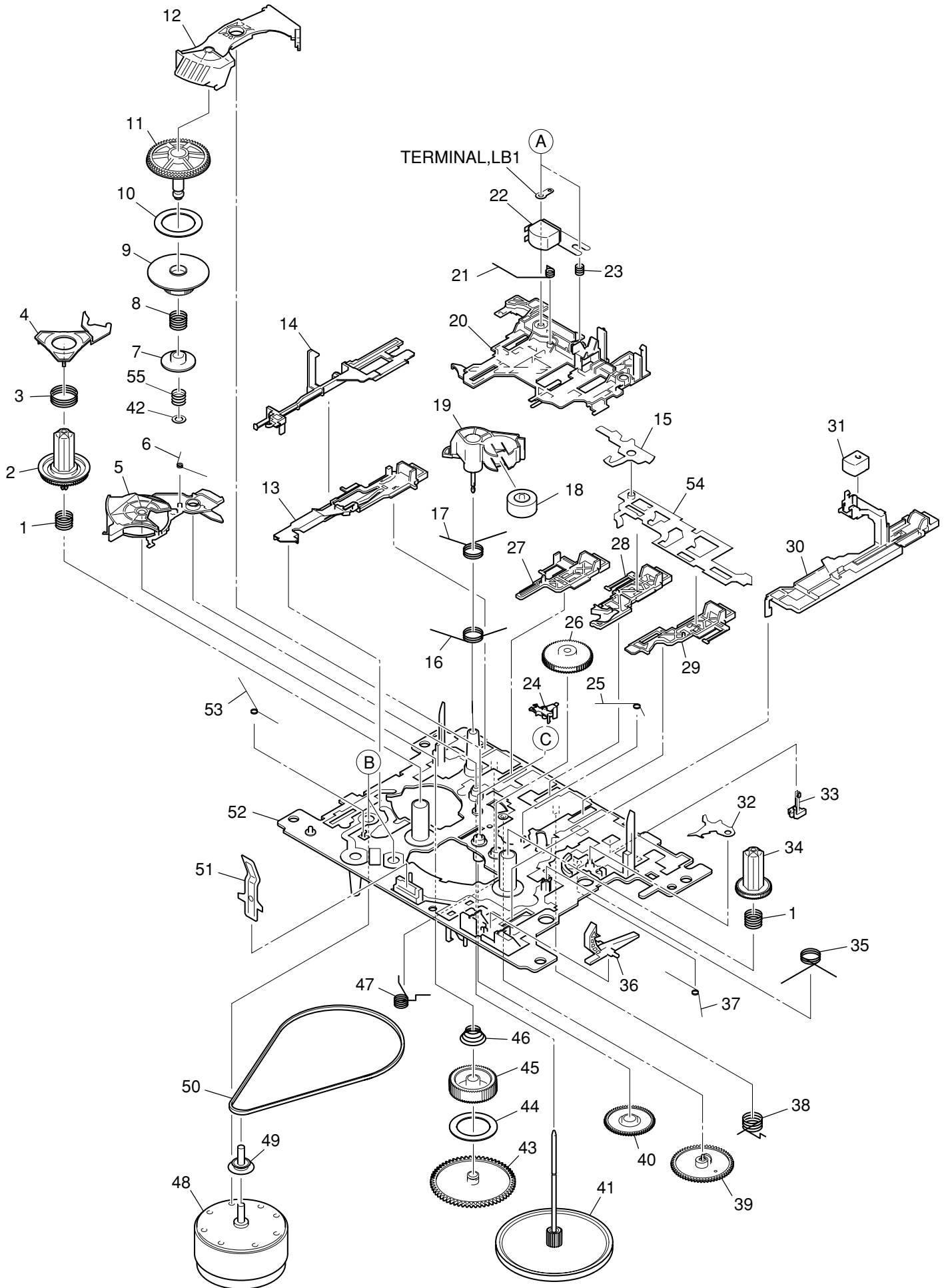
MECHANICAL PARTS LIST 1 / 1

| REF. NO. | PART NO. | KANRI NO. | DESCRIPTION | REF. NO. | PART NO. | KANRI NO. | DESCRIPTION |
|----------|----------------|-----------|------------------------|----------|----------------|-----------|----------------------|
| 2 | 8A-CD9-009-010 | | WINDOW, CASS<HT> | 47 | 8A-CD9-002-010 | | CABI, REAR A1<HT> |
| 2 | 8A-CD9-083-010 | | WINDOW, CASS-X<HE> | 47 | 8A-CD9-004-010 | | CABI, REAR B1<HE> |
| 4 | 8A-CD9-008-010 | | BOX, CASS<HT> | 51 | 8A-CD9-211-110 | | HLDR, PWB L |
| 4 | 8A-CD9-082-010 | | BOX, CASS-X<HE> | 53 | 8A-CD9-225-010 | | SPR-P, REC ZMZ-1 |
| 8 | 8A-CD9-061-110 | | CABI, FR A1 ASSY<HT> | 54 | 8A-CD9-224-010 | | HLDR, REC ZMZ-1 |
| 8 | 8A-CD9-074-110 | | CABI, FR B1-2 ASSY<HE> | 61 | 8A-CD9-091-010 | | KEY, REC ZMZ-1 |
| 9 | 8A-CH4-682-010 | | SPKR, 10-7OHM<HT> | 62 | 8A-CD9-092-010 | | KEY, PLAY ZMZ-1 |
| 9 | 8A-CH4-681-010 | | SPKR, 10-3.2OHM<HE> | 63 | 8A-CD9-093-010 | | KEY, REW ZMZ-1 |
| 26 | 8A-CD9-007-010 | | WINDOW, CD<HT> | 64 | 8A-CD9-094-010 | | KEY, FF ZMZ-1 |
| 26 | 8A-CD9-081-010 | | WINDOW, CD-X<HE> | 65 | 8A-CD9-095-010 | | KEY, STOP ZMZ-1 |
| 27 | 8A-CD9-006-010 | | BOX, CD<HT> | 66 | 8A-CD9-096-010 | | KEY, PAUSE ZMZ-1 |
| 27 | 8A-CD9-097-010 | | BOX, CD HEJSK<HE> | G | 8A-CDA-222-010 | | S-SCREW, CASS +2.6-4 |
| 40 | 8A-CD9-608-010 | | PT, H 2.5W<HT> | O | 87-721-096-410 | | QT2+3-10 W/O SLOT |
| 40 | 8A-CD9-604-010 | | PT, H 4.5WT04541A<HE> | | | | |
| 45 | 87-A91-857-010 | | ANT, ROD 5SEC709 | | | | |

COLOR NAME TABLE

| Basic color symbol | Color | Basic color symbol | Color | Basic color symbol | Color |
|--------------------|-------------------|--------------------|--------------------|--------------------|--------------------|
| B | Black | C | Cream | D | Orange |
| G | Green | H | Gray | L | Blue |
| LT | Transparent Blue | N | Gold | P | Pink |
| R | Red | S | Silver | ST | Titan Silver |
| T | Brown | V | Violet | W | White |
| WT | Transparent White | Y | Yellow | YT | Transparent Yellow |
| LM | Metallic Blue | LL | Light Blue | GT | Transparent Green |
| LD | Dark Blue | DT | Transparent Orange | GM | Metallic Green |
| YM | Metallic Yellow | DM | Metallic Orange | PT | Transparent Pink |

TAPE MECHANISM EXPLODED VIEW 1 / 1



TAPE MECHANISM PARTS LIST 1 / 1

| REF. NO. | PART NO. | KANRI NO. | DESCRIPTION | REF. NO. | PART NO. | KANRI NO. | DESCRIPTION |
|----------|----------------|-----------|-----------------------|----------|----------------|-----------|------------------------|
| 1 | 8Z-ZM1-254-310 | | SPR-C, REEL R | 31 | 87-A91-819-010 | | HEAD, EH 2NSS-2200 |
| 2 | 8Z-ZM1-225-110 | | GEAR, REEL R | 32 | 8Z-ZM1-215-010 | | LEVER, REC LOCK |
| 3 | 8Z-ZM1-253-210 | | SPR-C, AUTO SENSOR | 33 | 87-A91-492-010 | | SW, LEAF MSW18560 |
| 4 | 8Z-ZM1-217-110 | | LEVER, AUTO SENSOR | 34 | 8Z-ZM1-226-010 | | GEAR, REEL L |
| 5 | 8Z-ZM1-212-110 | | LEVER, T-UP | 35 | 8Z-ZM1-241-210 | | SPR-T, PLAY |
| 6 | 8Z-ZM1-245-310 | | SPR-T, AUTO | 36 | 8Z-ZM1-220-110 | | LEVER, REC SENSOR |
| 7 | 8Z-ZM1-236-010 | | CLR, SLIP FF/REW | 37 | 8Z-ZM1-249-210 | | SPR-T, FR |
| 8 | 8Z-ZM1-252-110 | | SPR-C, FF/REW | 38 | 8Z-ZM1-242-310 | | SPR-T, FF/REW |
| 9 | 8Z-ZM1-230-010 | | GEAR, SLIP FF/REW A | 39 | 8Z-ZM3-244-010 | | GEAR, CAM TD20 |
| 10 | 8Z-ZM1-269-010 | | FELT, FF/REW 2 | 40 | 8Z-ZM1-232-010 | | GEAR, IDL FF/REW |
| 11 | 8Z-ZM1-238-110 | | GEAR, SLIP FF/REW B 2 | 41 | 8Z-ZM1-290-010 | | FLY-WHL ASSY, ZZM1 |
| 12 | 8Z-ZM1-237-110 | | LEVER, FF/REW 2 | 42 | 8Z-ZM1-275-010 | | W-L, 1.47-4-0.25 |
| 13 | 8Z-ZM1-283-010 | | LEVER, PAUSE 2 | 43 | 8Z-ZM1-228-010 | | GEAR, SLIP T-UP B |
| 14 | 8Z-ZM1-222-010 | | LEVER, E-LOCK M | 44 | 8Z-ZM1-265-010 | | FELT, T-UP |
| 15 | 8Z-ZM1-219-010 | | LEVER, E-OPEN | 45 | 8Z-ZM1-227-010 | | GEAR, SLIP T-UP A |
| 16 | 8Z-ZM1-244-110 | | SPR-T, T-UP | 46 | 8Z-ZM1-251-210 | | SPR-C, T-UP SLIP |
| 17 | 8Z-ZM1-247-310 | | SPR-T, PINCH | 47 | 8Z-ZM1-243-310 | | SPR-T, STOP/PAUSE |
| 18 | 8Z-ZM1-261-110 | | ROLLER ASSY, PINCH | 48 | 87-A91-825-010 | | MOT, M09Y/Z |
| 19 | 8Z-ZM1-221-210 | | LEVER, PINCH | 49 | 8Z-ZM1-271-010 | | PULLEY, MOT ZZM-1 |
| 20 | 8Z-ZM1-205-310 | | LEVER, PLAY | 50 | 8Z-ZM1-264-010 | | BELT, MAIN S |
| 21 | 8Z-ZM1-248-210 | | SPR-T, BRG | 51 | 8Z-ZM1-260-010 | | SPR-P, CASSETTE |
| 22 | 87-A91-830-010 | | HEAD, RP-7442 | 52 | 8Z-ZM1-201-610 | | CHAS ASSY, ZZM-1 |
| 23 | 84-ZM2-227-310 | | SPR-C, AZIMUTH | 53 | 8Z-ZM1-255-310 | | SPR-T, E-LOCK |
| 24 | 8Z-ZM1-216-110 | | LEVER, AUTO | 54 | 8Z-ZM1-214-210 | | LEVER, LOCK |
| 25 | 8Z-ZM1-246-110 | | SPR-T, AUTO 2 | 55 | 8Z-ZM1-257-110 | | SPR-C, F/R |
| 26 | 8Z-ZM1-233-110 | | GEAR, IDL REW | A | 84-ZM2-242-010 | | S-SCREW, AZ1-2-6.4 |
| 27 | 8Z-ZM1-208-010 | | LEVER, STOP | B | 8Z-ZM1-270-110 | | V+2.6 ZZM-1 |
| 28 | 8Z-ZM1-207-010 | | LEVER, FF | C | 87-B10-301-010 | | W-L, 1.63-3.2-0.5 SLIT |
| 29 | 8Z-ZM1-206-010 | | LEVER, REW | | | | |
| 30 | 8Z-ZM1-211-210 | | LEVER, REC 2 | | | | |

アイワ株式会社 〒110-8710 東京都台東区池之端1-2-11 ☎03(3827)3111 (代表)
AIWA CO.,LTD. 2-11, IKENOHATA 1-CHOME, TAITO-KU, TOKYO 110, JAPAN TEL:03 (3827) 3111