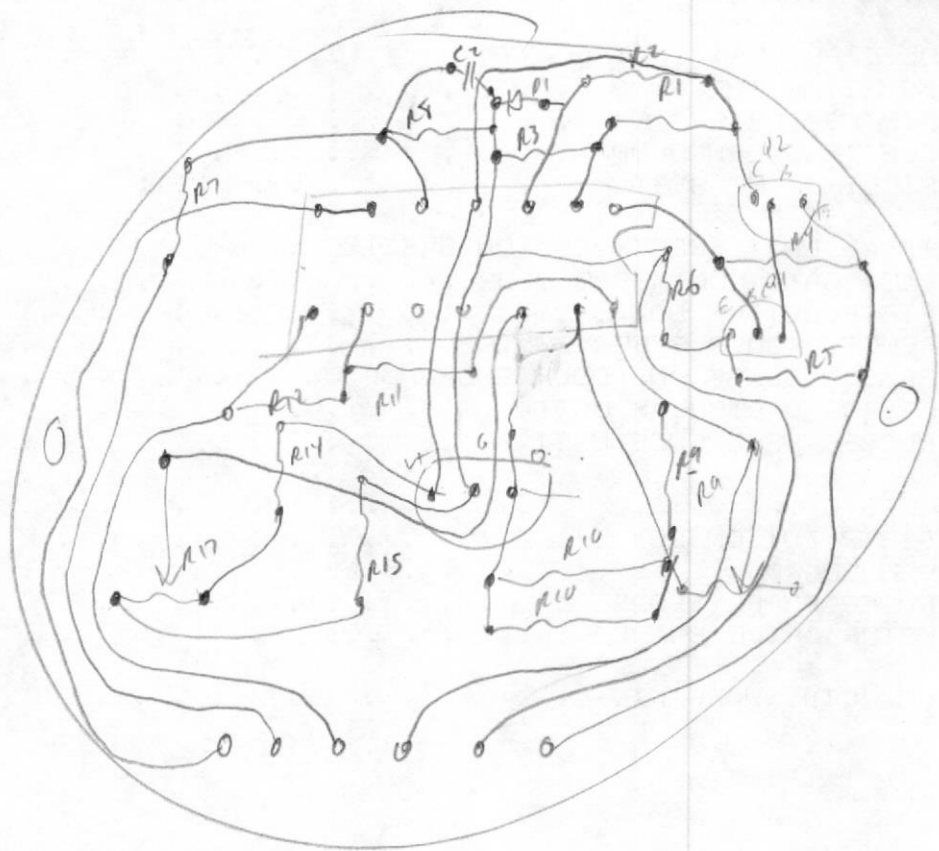
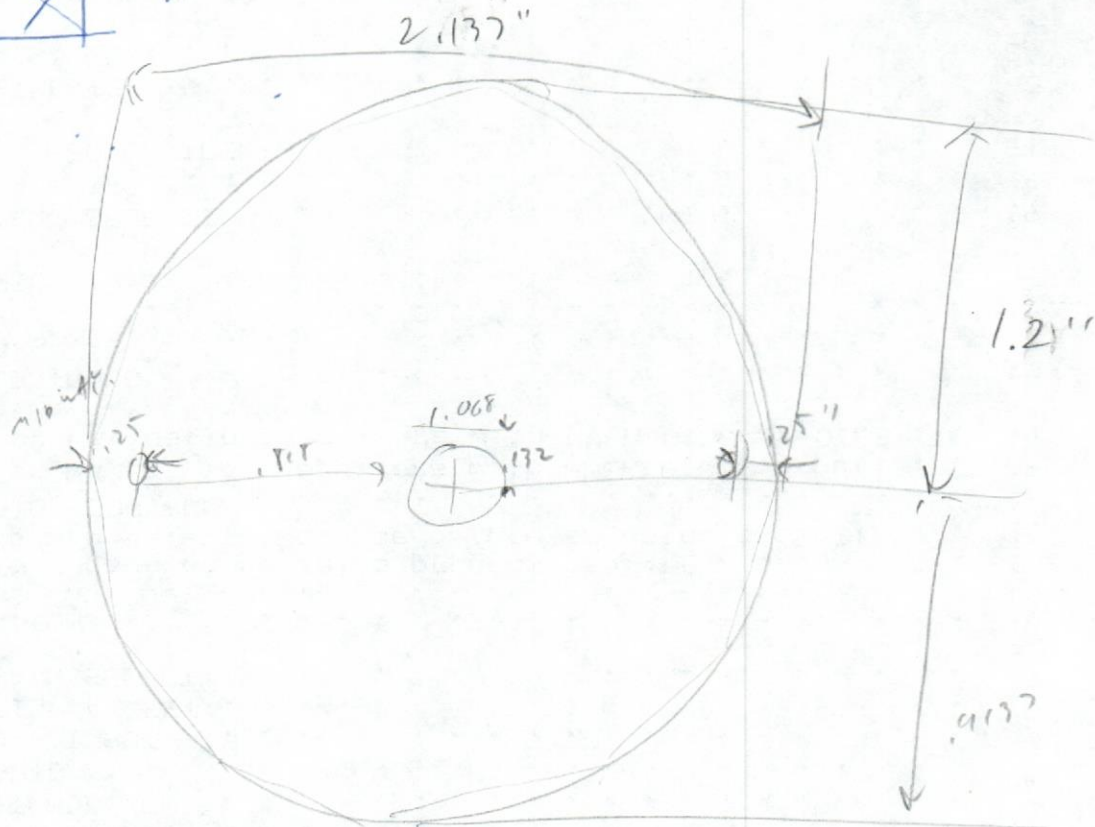
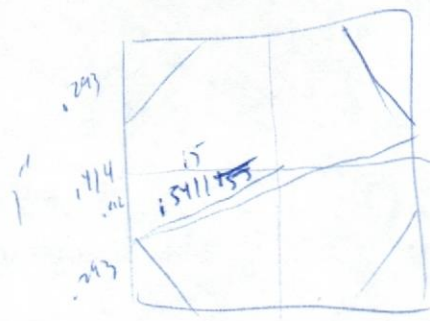
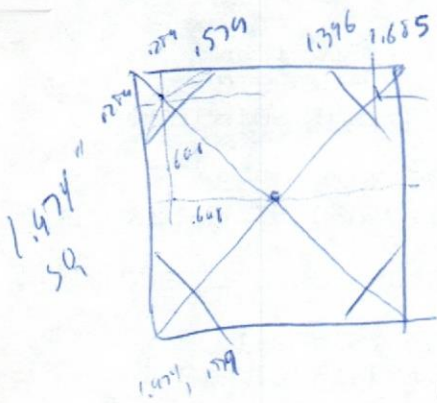


#	Instance	Part	File: X, Y
1	C1	100U	C:\PCPRO\RUDREF.DWG:87,13
2	C2	10U	C:\PCPRO\RUDREF.DWG:66,39
3	Q1	2N3904	C:\PCPRO\RUDREF.DWG:67,20
4	Q2	TIP30	C:\PCPRO\RUDREF.DWG:72,4
5	R1	10K	C:\PCPRO\RUDREF.DWG:37,13
6	R10	3K9	C:\PCPRO\RUDREF.DWG:45,42
7	R11	10K	C:\PCPRO\RUDREF.DWG:66,51
8	R12	10K	C:\PCPRO\RUDREF.DWG:79,59
9	R14	10K	C:\PCPRO\RUDREF.DWG:48,33
10	R15	10K	C:\PCPRO\RUDREF.DWG:29,61
11	R17		C:\PCPRO\RUDREF.DWG:29,43
12	R2	10K	C:\PCPRO\RUDREF.DWG:42,13
13	R3	10K	C:\PCPRO\RUDREF.DWG:37,26
14	R4	68K	C:\PCPRO\RUDREF.DWG:57,10
15	R5	2K2	C:\PCPRO\RUDREF.DWG:74,18
16	R6	680R	C:\PCPRO\RUDREF.DWG:80,28
17	R7	10K	C:\PCPRO\RUDREF.DWG:61,30
18	R8	10K	C:\PCPRO\RUDREF.DWG:61,38
19	R9	10K	C:\PCPRO\RUDREF.DWG:55,37
20	U1	324	C:\PCPRO\RUDREF.DWG:47,18
21	U1	324	C:\PCPRO\RUDREF.DWG:54,44
22	U1	324	C:\PCPRO\RUDREF.DWG:71,55
23	U1	324	C:\PCPRO\RUDREF.DWG:75,29
24	U2	TL173	C:\PCPRO\RUDREF.DWG:20,31
25	X1	CONN6	C:\PCPRO\RUDREF.DWG:98,47

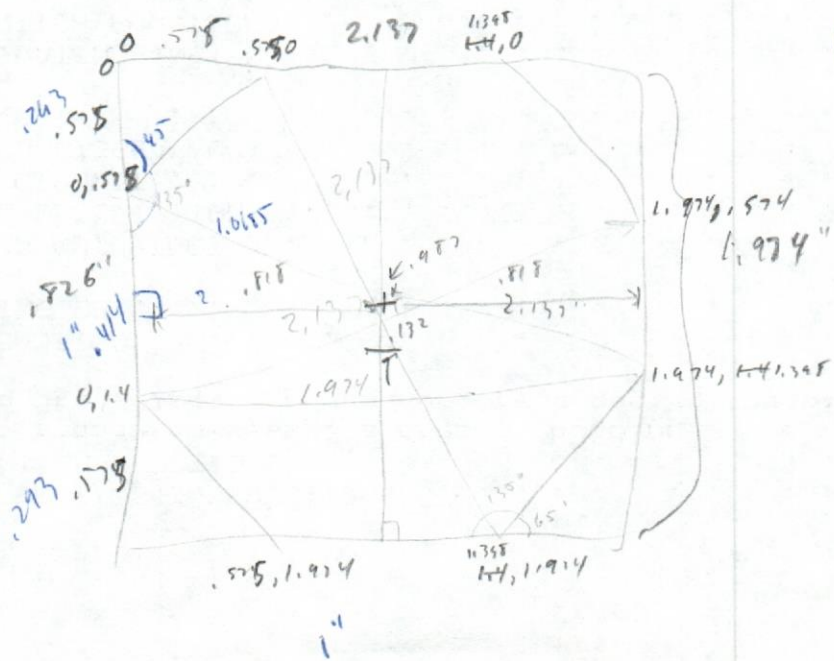
-end-





4.5707

Centres = .987, .987
 Hole 1 = .169, .987
 2 = 1.805, .987
 Center = .987, 1.119



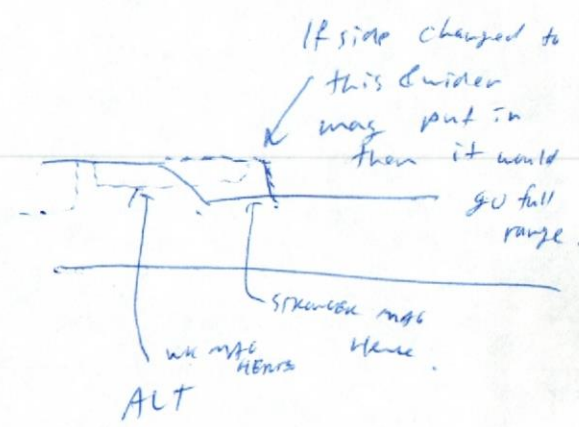
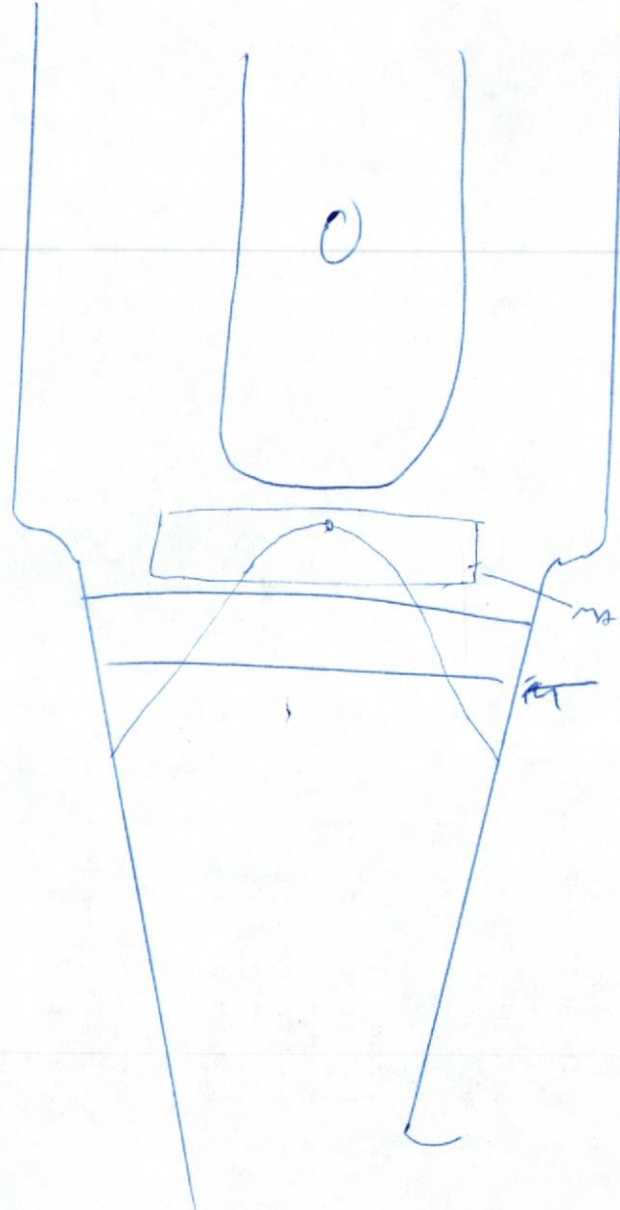
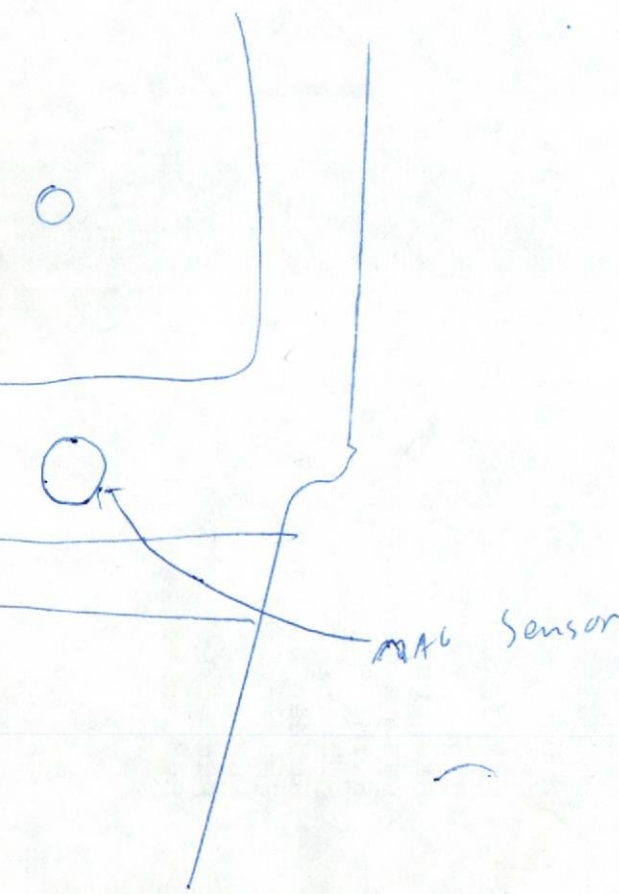
1.474

$$\begin{array}{r} .987 \\ + .118 \\ \hline 1.105 \end{array}$$

$$\begin{array}{r} .987 \\ + .132 \\ \hline 1.119 \end{array}$$

Part	Corporate	Count	Description	\$
1	?	1	(not in library)	0.00
2	100U	1	100uFD CAP	0.00
3	10K	10	RESISTOR	0.00
4	10U	1	10uFD CAP.	0.00
5	2K2	1	2.2 K RESISTOR	0.00
6	2N3904	1	TRANSISTOR	0.00
7	324	1	QUAD OPAMP	0.00
8	3K9	1	3.9 K RESISTOR	0.00
9	680R	1	680 OHM	0.00
10	68K	1	68K RESISTOR	0.00
11	CONN6	1	(not in library)	0.00
12	TIP30	1	TRANSISTOR	0.00
13	TL173	1	HALL SENSOR	1.33

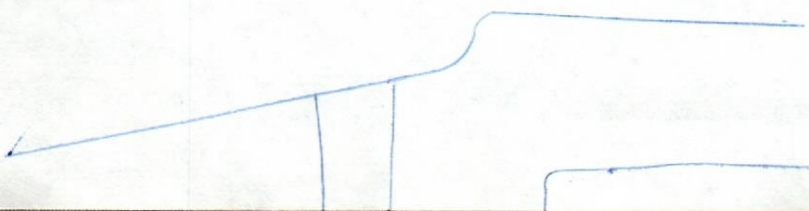
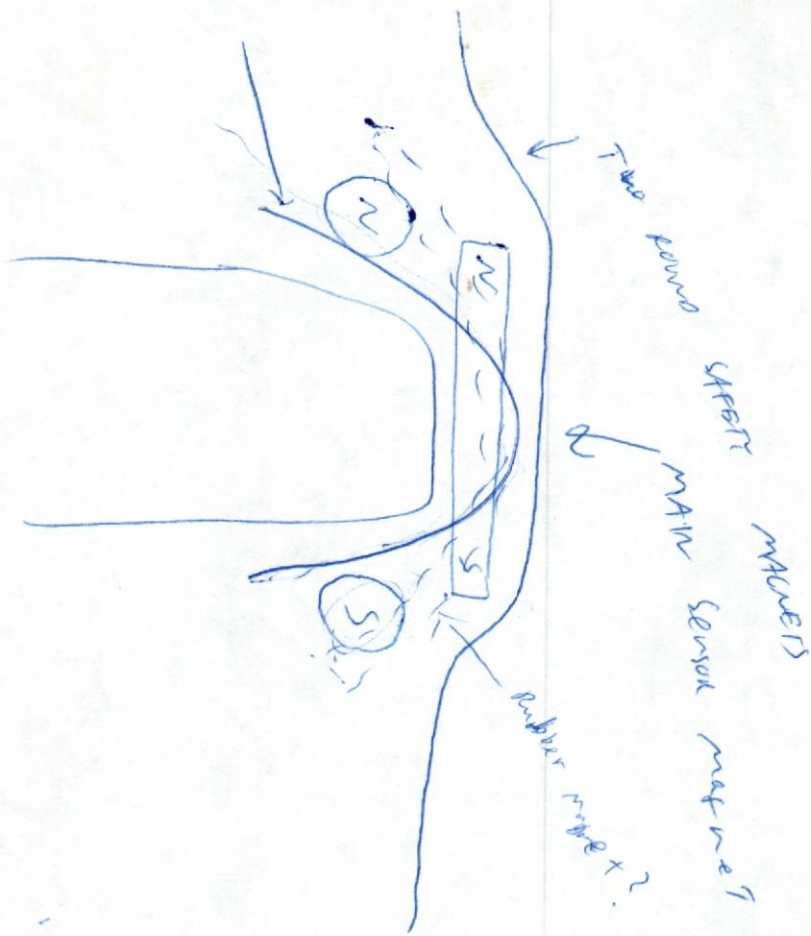
Total cost: 1.33
-end-

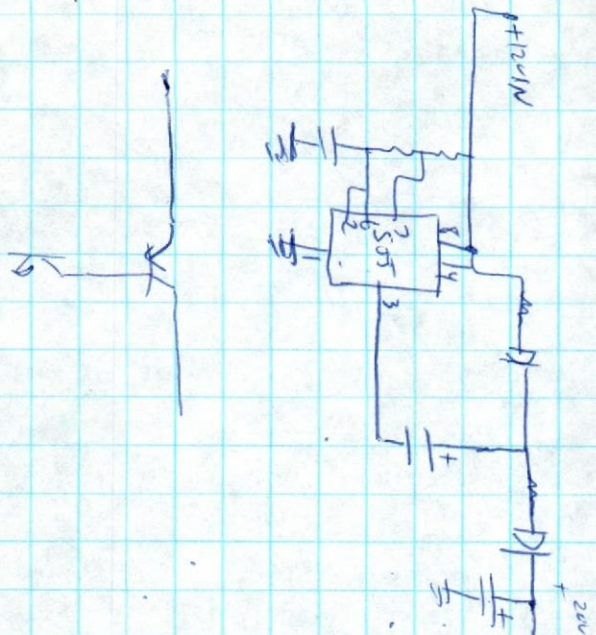


$\pm 14'$
 out of $\pm 25'$ MAX

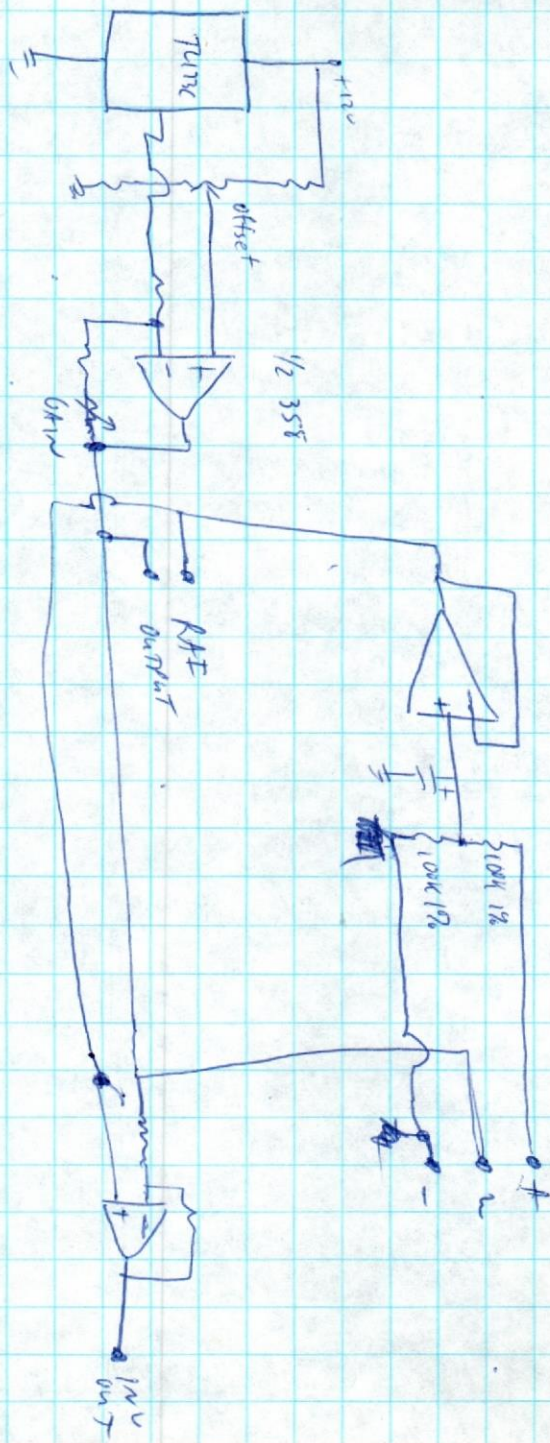
alt. put weaker mag in

possibly print on
data bar pattern
elipse & use
opto interrupter





TI part
 511-332-3552
 416-758-4453
 884-9181



General - TI 7473C LP
 Sprague UGN 350M
 UGN 3501T
 Honeywell 95512-2

2000 mil.
 1133 mil.
 Arrow
 Marshall
 Schweber
 Laurie.
 - 16 WKS lead time -
 421-2333
 1-800-387-3962
 416-458-8046
 716-424-2222

M16 SENSOR INPUT

K2211C

