

# Tone Control Adventure

**Engineer James Langham proves again  
that curves don't always mean results**

By JAMES R. LANGHAM

It was some time ago that the XYL came home with a story about a friend's big, fancy, custom-built radio. "Instead of just one knob that cuts out the highs, they have two. One boosts the lows, and one boosts the highs. Couldn't you rig us up something like that?"

"Why, I guess we can manage," I remarked foolishly. "You see, we make up an M-derived or constant K-filter section for highs and another for lows and..."

"I'm no engineer," she said. "You figure it out, and I'll build it."

I was young and innocent then: I believed what the textbooks said about filters, and I thought I knew a lot about electronics. So I got out the books and slide rule and spent about 2 hours computing the constants for a pair of bridged-T filters. I figured the sizes for 4 coils and 4 condensers and even plotted the theoretical curves for each. I drew up a sketch so she'd know just where to put them into the circuit and then tossed the papers lightly in her direction and departed. I don't know if I thought she'd have built it by the time I got home that afternoon or not. I may have. So help me, I may have.

The XYL was a mite irritated when I got home. "Look, knucklehead," she said, "you may be a fire-ball of a designer, but you sure aren't very practical."

"Mmmm?" I inquired. Mild curiosity. "Something troubling you, dear?"

She had a lot of catalogs and a worried look. "Where were you planning on getting these fancy chokes? Such as 0.183 henrys and 13.2 millihenrys and—they're not standard sizes at all. Nobody sells them."

I grinned at her. "That's right, dear. You'll have to wind them up yourself or get someone else to do it."

My tone was a mistake. She announced immediately (and loudly) that by all that was holy she was not going to wind up any coils. If I could persuade someone else to do it, O.K. If not, I would have to wind them myself.

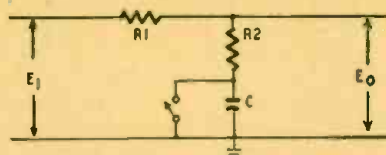
Well, after I phoned downtown to a couple of places, I announced I would be glad to wind them. "I don't see how they can expect \$15.00 for winding a simple little coil. I'll do it myself."

For the next month I wound coils. Air core and iron core. I used an egg-beater hand drill and bought quantities of wire. Then I would go over to the technical school and check them on the bridge. Then I would add or take off turns until the inductance was right. Then I would check the Q, and then get another form and start over again. Finally I had the 4 coils. They were within 2% of the design values, and they were nicely potted (beeswax and rosin). And I decided I

had learned something valuable—it isn't easy to wind coils.

The XYL kept her word and wired the things up. She bridged condensers and found room on the chassis and did her wiring neatly with squared corners. She was really excited about it.

She put on Scheherazade—lots of



$$E_0 = E_1 \frac{R_2}{R_1 + R_2} \text{ WITH SWITCH SHORTED}$$

$$E_0 = E_1 \frac{\sqrt{R_2^2 + X_C^2}}{\sqrt{(R_1 + R_2)^2 + X_C^2}} \text{ WITH SWITCH OPEN}$$

Fig. 1—A circuit to boost the bass notes.

highs and lots of lows. She wanted to twist the two new knobs and hear the ends go up and down.

Something was a little wrong. The low control made the hum level go up and down, but it didn't seem to affect the low notes in the music. The high control was better. You could hear an increase in the high level when the control was twisted, but there seemed to be an unpleasant accompanying distortion there too.

We stood there glaring at each other. "The wiring looks nice anyhow," I got in the first blow.

"The engineering looked good too," she said sweetly. "Those curves were

lovely. The theoretical ones, I mean."

I called for peace. "I guess that bass filter needs more shielding. It picks up hum."

She nodded. "I'll say it does."

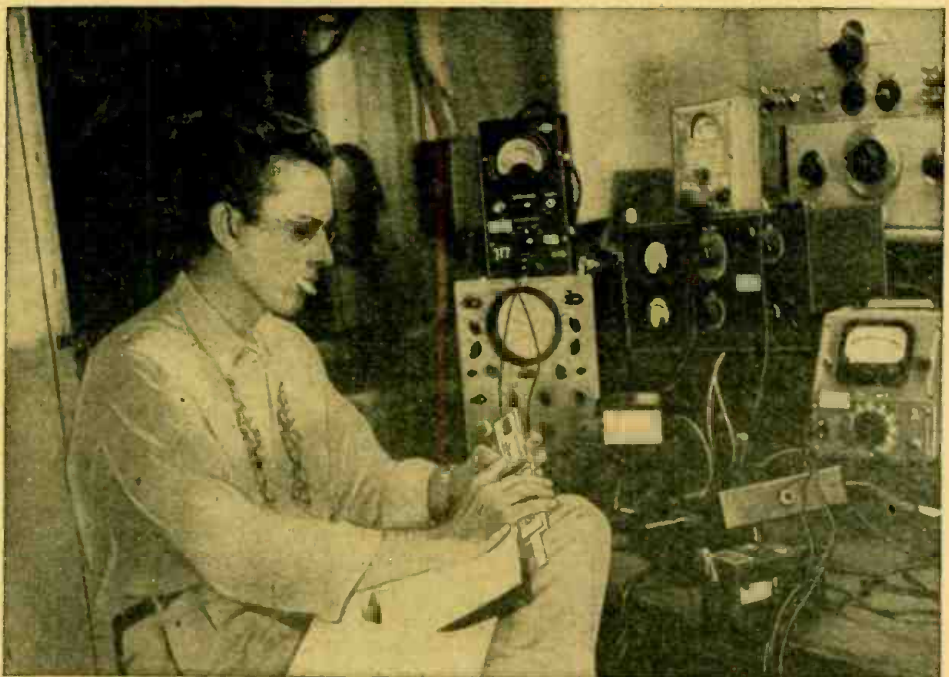
We tried shielding the coils. (Incidentally, the best shielding seemed to be beer cans.) Then we tried putting a higher level into the filters so the induced hum would be lower than the signal. We even lit the low-level filaments with d.c. so the hum would be low enough.

After we did enough things it got almost fair. There were limits to the amount of boost we could give it, though. If we turned up the bass much, it sounded muffled; and if we turned up the treble to match, the distortion came up with it. One day I came home to find the XYL showing off our outfit to a friend. She pointed to a newly blank panel. "No tone control at all," she said. "We find that if the tonal balance is proper, tone controls aren't needed. In fact, we avoid distortion by not having any tone controls."

I listened and it sounded good. She had jumped over the filters and, by golly, it sounded better than it had for some time. So I adopted her line of reasoning and argued with the fellows that really high-fidelity amplifiers shouldn't have any tone control.

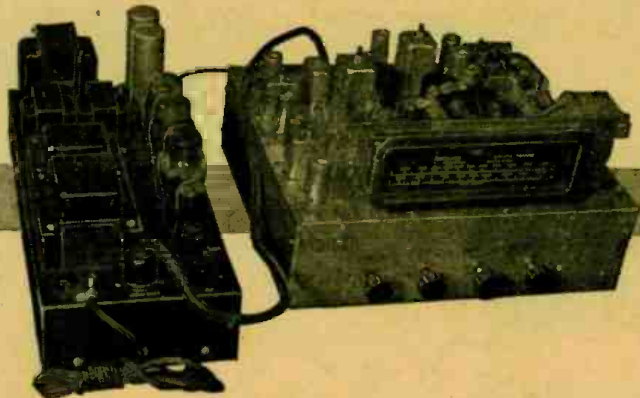
I was squelched soon by this argument: "What if your pick-up or your speaker or the record falls off at the

(Continued on page 70)



I figured the sizes for 4 coils and 4 condensers and even plotted the curves for each.

# THE DIFFERENCE IS IN THE LISTENING PLEASURE



## Meissner MODEL 9-1093 AM-FM TUNER AND AMPLIFIER

If you appreciate the best — then this MEISSNER tuner is for you! As shown above, it is delivered complete with tubes, two antennas and all hardware required to mount chassis units in cabinet. The antennas consist of a low impedance 12" x 16", noise reducing loop for AM broadcast and an indoor type folded dipole, 300 ohm, for FM broadcast. Cabinet and speaker not included.

- Power output of 18 watts at less than 2% harmonic distortion.
- Audio fidelity, flat within plus-minus 2db. from 50 to 15,000 CPS.
- Frequency ranges, 535 to 1620 KC. (AM Band) and 88 to 108 MC (FM Band).
- Hum level, 65 db. below full output.
- Sensitivity, less than 20 microvolts.
- Phonograph Input, compensated for either magnetic or crystal pickup.

- Tone Control, combination control provides bass boost up to 11db. at 40 CPS and treble attenuation up to 13db. at 10,000 CPS.
- Power Supply, 105 to 125 volts, 50-60 cycle. Consumption, 190 Watts.
- Tube complement, 3 type 6SK7, 1 type 6SA7, 1 type 6H6, 5 type 6AG5, 1 type 6C4, 2 type 9001, 1 type 6AL5, 2 type 6J5, 1 type 6U5/6G5, 1 type 6SN7GT, 2 type 6L6, 1 type 5Y3G and 1 type 5V4G.
- Chassis Weight, tuner, 18 pounds, amplifier, 27 pounds.

# MEISSNER MANUFACTURING

DIVISION OF MAGUIRE INDUSTRIES, INC.  
MT. CARMEL, ILL., U. S. A.

**GIANT PENNY SALE**  
EXTENDED THROUGH APRIL 30  
**PAY 1¢ MORE — GET 2**

Your tremendous response made us hunt up more items we know you need—because you asked for them. **GREATER BUYS THAN EVER! PHENOMENAL BARGAINS EVERY ONE!**

For example a G.M. Relay #13016 4PDT 240 ohms 24v D.C. 10 Amp Contacts. No. R16 sells for \$1.25. **YOU GET 2 FOR \$1.26.**

A Weston Model 301 50-0-50 D.C. Ma 3 1/4" NEW No. M11 sells for \$4.95. **YOU GET 2 FOR \$4.96.**

Chokes, resistors, Ceramic Sockets, High Voltage Transformers, Relays, Selenium Rectifiers, Westinghouse Meters, Connectors, Rheostats, Condensers, Tubes and hundreds of other parts.

**WRITE FOR SPECIAL SALE CATALOGUE—FOR THE BUYS OF A LIFETIME!**

**Universal/General Corp.**  
365 Canal St., New York 13 (Dept. C-R) Walker 5-9642

**STEADY PROFITS**

**YOUR OWN BUSINESS with CORADIO**  
*The Coin Operated Radio*

Place these specially built radios that play 1 or 2 hours for 25c in the thousands of available hotel rooms, tourists courts, etc. They yield immediate profits and steady income. Install Coradio, the finest made. Limited capital required. Send for further information. Write today.

**CORADIO Coin Operated Radio**  
108 W. 31 Street Dept. RC, New York 1, N. Y.

**CORRECTION:** The grid of V120A in the RCA 630TS Televiser Schematic, January, 1948, page 49, should be connected to pin 1, not pin 4 as shown.

### tone control (Continued from page 35)

low end or the high end? Aren't tone controls desirable to compensate for unbalance in other parts of the system?" That argument is right and proper, so I shut up.

I breadboarded. I spent my evenings for some time reading up on controls, trying them out and wondering what made them work. Finally I saw what was going on. All I wanted was an a.c. voltage divider that used reactances in one leg. Something that would give a different ratio at one frequency than at another.

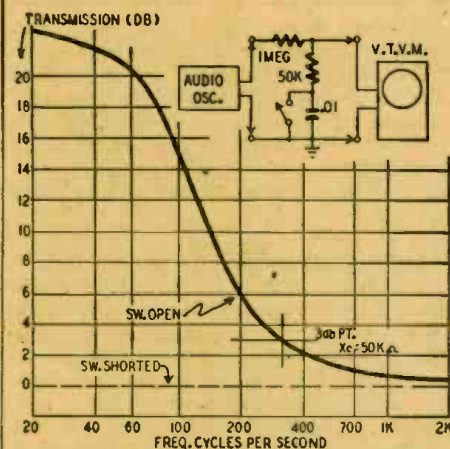


Fig. 2—Operation of the bass-boost circuit.

This is what I ended with: Fig. 1 shows the basic circuit for lows. Close the switch and you have a normal voltage divider.

$$\text{Output is } \frac{R2}{R1 + R2} \times \text{input.}$$

Now let's open our switch—the condenser then comes into the circuit. At low frequencies the reactance is high and we have an output:

$$\frac{\sqrt{R2^2 + XC^2}}{\sqrt{(R1 + R2)^2 + XC^2}} \times \text{input.}$$

We can easily pitch that anywhere we want by juggling the size of C and R2. We will end with a curve like Fig. 2. The bass rise will start up and be 3 db where the reactance of C equals R2. It will go up at a rate that approaches 6 db per octave until it starts to level off. The leveling-off spot (3 db from the top) will be where R1 equals the impedance to ground or  $(R2^2 + XC^2)^{1/2}$ .

O.K. you say, but you're still not boosting the bass! You're just cutting down the treble. That's right, but you don't have to look at it that way. You can say this is a filter with an insertion loss of N db. When the switch is flipped, you get a bass boost of 0.8N db. Try it and see. You can make the resistors 1 meg and 50,000 ohms, which will give an insertion loss of 26 db and a bass boost of approximately 20 db (when you flip your switch). Make C a .01-µf condenser, and the bass rise will start around

400 cycles and go up very nicely. What's that? You want smooth control and not 20-db boosts? Okay, take out the switch and put in a potentiometer. Try a 500,000-ohm pot and see how nicely you can bump up the bass in your radio programs.

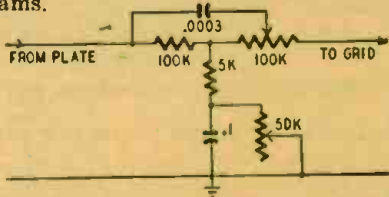


Fig. 3—A treble boost condenser is included.

How about treble? Easy! Now we want a series condenser instead of one to ground. Let's put an isolating resistor at the output of our bass booster and run a condenser across it to the input of the next stage. Since we have pretty high resistances it will have to be a small condenser to have just the highs affected, so let's cut everything down by 10. We can use a 100,000-ohm, series-dropping resistor, 5,000 ohms in the leg to ground and, a bass condenser of 0.1  $\mu$ f. Then let's use another 100,000 ohms to isolate the back end, and fool around with different-sized condensers for the treble. A .0003 mica seems about right. The treble rise begins around 2,500 to 3,000 cycles. Amazingly enough, that's where the reactance of the .0003 condenser equals the 200,000 ohms in parallel with it. Fig. 3 shows how it works.

That one can be made smoothly adjustable too. Let's make the isolating resistor a 100,000-ohm variable. Then the condenser will slide back to where our bass-boost voltage divider will keep any highs from getting through, or slide up toward the next grid where our highs will pound out like mad.

Here's something to remember: if you keep your resistances and reactances in the same proportion, you can multiply your constants by 10 or 1/10 or anything else. That means you can juggle things around to suit varying conditions. If this circuit is to follow a triode with low plate impedance, keep the 100,000 ohms, 0.1  $\mu$ f, and 5,000 ohms. If you are using a pentode, you'll lose gain with it because a pentode likes a higher load resistance. O.K. then, change to 1 megohm and .01- and 50,000-ohm values. It'll still act the same. If you want your bass or treble boosts to come lower in the audio band, just increase the capacitance a bit; if you want higher boosts (louder, I mean), juggle your resistance ratio. I prefer these sample values because they suit my ear and my turntable rumble. Don Lee put out something like \$1,500 for his turntables because he wants the rumble to be very low. Us guys with our \$10 motors—we can't boost our bass too much or we listen to rumble instead of music. Don't forget, too, that we are throwing away gain with this business. We throw away 26 db with these constants and get about 20 db back at the extreme ends of the band. Our middle is still down 26 db. So let's plan on having an extra 26 db of gain somewhere else in our system.

(Continued on page 72)



TROUBLE-FREE SERVICE from  
STANDARD BRAND PARTS  
RCA • Ampertite • Simpson •  
Jensen • Stancor • Ohmit •  
Shure • Billett • Dumont •  
IRC • Triplet • Sprague •  
Cornell-Dubilier • Meissner  
and hundreds of other  
MAIL COUPON FOR FREE COPY

# FREE!

## NEW COMPLETE Concord RADIO CATALOG

160 Value-Packed Pages of the  
Latest and Best in RADIO • TELE-  
VISION • Electronic Equipment!

The Only Complete Up-to-the-Minute Catalog  
of Radio Parts — Sets — Amplifiers — Testers —  
Ham Gear — Kits • Immediate Shipment.

### Save on Values Like These!



#### Automatic Record Changer

Simple to operate, simple gearless foolproof mechanism. Plays 10 twelve inch or 12 ten inch records automatically. Lightweight high fidelity crystal pickup, only 1 1/2 oz. needle pressure. Overall size: 10 1/2 x 12 1/2 x 8", requires 6" above the motor board and 2" below. With mounting hardware. Shpg. wt. 20 lbs.

**X184AD.....\$12.95**

Walnut finished mounting base for above changer, 12 1/2 x 11 3/8 x 2 1/4. C22361—AD.....\$1.95



#### Seeburg Intermix Changer

New Seeburg "Intermix" changer designed to handle up to 12 ten inch or twelve inch records intermixed. Automatically shuts off after last record is played. Simple to operate—easy to load and unload. Overall size: 14 1/2 x 14 1/2 x 7 1/4". Requires 4 1/2" above the motor base and 2 1/2" below.

**5B9576AD.....\$37.50**

**Dynatenna FM Antenna**

The STROMBERG-CARLSON Dynatenna folded dipole antenna designed for use with all FM receivers. Insures maximum efficiency of receivers over entire FM band. Adjustable dipoles calibrated for both new and old FM band give optimum reception of stations in the vicinity. Plastic mounting block allows setting for either vertical or horizontal polarization. Complete with 60 ft. twin lead-in, insulators, hardware and instructions.

**5B9578AD.....\$4.95**

#### Special Photoflash Condenser

• Special Low Price  
• High Energy Rating  
• Small, Lightweight  
Small lightweight photoflash condensers. Peak voltage 2500, energy storage 21.9 watt seconds, capacity 7 mfd. Good results possible with just two condensers, professional results can be obtained by using 3 or 4 condensers connected in parallel. A real buy at this special low price.

**5B3240AD.....\$3.95**

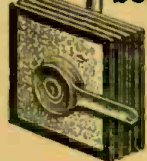
#### Reliance Volume Controls

Guaranteed quality at low prices. Full length shaft. Standard 1/4" bushing. Switches are affixed, SPST. \*have audio or antenna taper, others have linear taper.

Less Switch	With Switch	Ohms
C8112AD	C8123AD	25,000
C8115AD	C8119AD	50,000
C8114AD	C8129AD	100,000
C8116AD	C8120AD	250,000
C8117AD	C8121AD	500,000
C8113AD	C8128AD	500,000
C8118AD	C8122AD	1 megohm
C8105AD	C8127AD	1 megohm
C8111AD	C8133AD	2 megohm

Less Switch, each.....34c  
With Switch, each.....44c

#### Selenium Rectifier



- No Warmup
- Easily Installed
- Costs Less

Saves space—only 1 1/4 x 1 1/4 x 11-16"—fits where tube won't. Costs less than tube and sockets eliminated. Long life, built to last the life of set. Rated at 100 mll. Connect two to deliver 250 volts at 80 mll. from 117 V A.C.

**C10560AD.....75c**

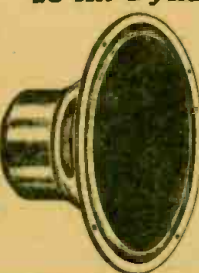
#### 6-in. PM Speaker



High quality all purpose 6" PM speaker. High permeability permanent magnet. One-piece seamless cone, plated metal frame. Voice coil impedance 3.2 ohms. 6" diameter, VC dia. 1/4". Normal output, 4 watts, peak 6 watts. Depth 2 1/8-16". Less output transformer. Shpg. wt. 3 lbs.

**X144AD.....\$1.79**

#### 15-in. Dynamic Speaker



Excellent constructed high quality 15" dynamic speaker. Designed for general applications such as FM and AM receivers, fine phonographs, broadcast and recording monitoring and public address systems. 16 ohm voice coil impedance. Field 12,500 ohms. Dustproof spider and voice coil construction.

**5B7015AD  
\$12.95**

# CONCORD

RADIO CORPORATION

CHICAGO 7      ATLANTA 3  
901 W. Jackson Blvd.      265 Peachtree St.  
Downtown Chicago Branch: 229 W. Madison  
Lafayette Radio Corp.

Concord Radio Corporation, Dept. 144  
901 W. Jackson Blvd., Chicago 7, Ill.

Yes, rush FREE COPY of the comprehensive new Concord Radio Catalog.

Name.....

Address.....

City.....State.....

# LEEDS

The Home of RADIO

## In Our 26th Year

### Quality - Price - Dependability

#### CS—DIFFERENTIAL RELAY

Dual coil with armature pivoted between coils. All contacts normally open. Operates 220-250 Volts. 8000 Ohms each coil, contacts S.P.D.T. Controls rated 2 amps. at 110 VAC. Ideally suited for balanced or bridge type circuits where limited current or power is available. Will withstand 12 G Vibration up to 60 cycles at 35,000 feet altitude.



Special low price ..... **95c**

#### STEEL CHASSIS

10 x 17 x 3.....	\$1.38	11 x 17 x 3.....	\$1.66
5 x 10 x 3.....	87c	13 x 17 x 3.....	\$2.22
7 x 13 x 2.....	96c	7 x 7 x 2.....	63c
10 x 14 x 3.....	\$1.35	4 x 17 x 3.....	99c

#### STEEL CANS AND BOXES

4 x 4 x 2.....	68c	12 x 7 x 6.....	\$1.69
4 x 5 x 3.....	78c	15 x 9 x 7.....	\$2.35
6 x 6 x 6.....	99c	11 x 12 x 8.....	\$2.25

#### 1/2 INCH STEEL PANELS

5/4 x 19.....	87c	10 1/2 x 19.....	\$1.22
7 x 19.....	96c	12 1/2 x 19.....	\$1.46
8 1/2 x 19.....	\$1.10	14 x 19.....	\$1.62

#### 1/2 INCH ALUMINUM PANELS

5 1/2 x 19.....	\$1.74	8 1/2 x 19.....	\$2.25
7 x 19.....	\$1.84	10 1/2 x 19.....	\$2.87

All above Black Crackle finish. Grey panels to order.



#### ATTENTION!! ALL SCR-522 OWNERS

Remote Control Boxes for SCR 522's. Brand New in Original Packing; Consists of 5 push button switches, 5 Western Electric Pilot Assemblies, with Pilot Bulbs and Dimmer, and lever Switch all finished in Black Crackle. Order yours Today for only..... **\$1.25 ea.**

Antenna Plug 46-PS-1 for 522A ..... 15c ea.

#### POWER TRANSFORMER

655-0-655 volts @ 320 mll. 110 volt AC Primary. Thordarson power transformer, fully shielded. Net weight approx. 17 lbs. Special.. **\$4.95**

#### FILAMENT TRANSFORMERS

6.3 volts @ 6 amps. A swell buy .....\$1.50  
10 volts @ 8 amps. 7500V. Insulation .....\$3.84

#### OIL FILLED CONDENSERS

1 Mfd. 600 VDC...35c      7 Mfd. 330 VAC. \$1.25  
2 Mfd. 600 VDC...35c      0.1 Mfd. 7500 VDC. 1.50  
10 Mfd. 600 VDC...98c      2x.1 Mfd. 7000 VDC. 2.00  
2 Mfd. 1000 VDC...69c      .02 Mfd. 8000 VDC. .98  
SPECIAL 16 Mfd. 400 VDC W.E. ....98  
1 Mfd. 5000 VDC Solar .....2.95

#### MICA CONDENSERS

.01-600V Postage Stamp      Each 5c  
.003-2000V Postage Stamp      100 for \$4.75  
.006-600V Postage Stamp

#### DYNAMOTOR 5047

D.C. input 27.0 volts at 1.75 amps. **95c each**  
D.C. output 285 volts at .075 amps.  
Continuous Duty Rating. Brand New.

#### 5 BPI CATHODE RAY TUBES

5" Green Screen. Brand New in original cartons. You'll want a few at this low price... **\$1.45**

832 TUBES—Brand New, Guaranteed. **\$2.15**  
Special .....

#### Wire Wound Potentiometer

100,000 ohm, precision made. G.R. type, 25 watt, 6" diameter. Brand new..... **\$1.95**



Heineman Circuit Breakers **95c**  
3 & 5 amp. sizes.....

#### RADIO TRANSMITTER & RECEIVER APS-13

17 Tubes

410 - 420 Mc. light weight fully enclosed, 30 Mc. IF, complete with tubes 5-846; 8-6AG5; 2-2D21; 1-VI-105; Schematic supplied with each unit. Only **\$11.95**



#### Items You May Be Looking For

In-23A X-Tal Diodes 35c each 3 for.....\$1.00  
Mike to Grid Ouncer Transformer 25:1 Ratio Low to High Imp. 35c each 10 for .....\$2.95  
Arc-5 Silver Plated Banana Plugs per doz .....10c  
De Jur Wire Wound Pot 20,000 Ohm. 12 watts .....49c  
Meissner Shielded 2.5 MA RF Choke .....19c  
R8-8 Octal Sockets low loss bakelite .....8c  
1/100 amp. instrument fuses 8AG size per 12 .....50c

DM-43A DYNAMOTOR. Manufactured by G. E. Nov. Input 24v @ 23 amps. 7500 RPM; output 515/1030/278 v. @ 215/260 milliamps; filtered. Special **\$2.95**

#### Well Known Make CONDENSERS

Oil Filled 2 Mfd.—10,000 volt D.C. Height 11 inch, width 1 1/4 inch, depth 3/4 inch. Connecting insulators are 3 inch high, 2 inch in diameter. Net weight 36 lbs. Pfd. 1001-23. They are Brand New and the list price has been \$192.00. If you can use them rush your order, they won't last long at this special price of ..... **\$13.95**

If not rated 25% with order, balance C.O.D. All prices F.O.B. our warehouse New York. No order under \$2.00. We ship to any part of the globe

## LEEDS RADIO CO.

75 Vesey Street Dept. RC4  
Cortlandt 7-2612 New York City 7

## BONAFIDE VALUES



#### SHURE T17B

Push Button Carbon Mike

**88c**

With Cord and Plug Value \$12.00

#### 2 TUBE PHONO OSCILLATOR

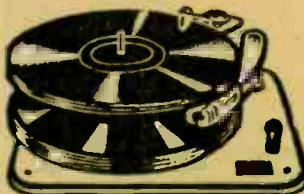


Complete with tubes. 3525, 12SK7. Use with record player, and tune in on any radio. Complete. All Wired ..... **\$4.75**

3 Tube PHONO AMPLIFIER Volume and tone control ALL WIRED with Tubes.....**\$4.95**

WEBSTER #156 CHANGER AUTOMATIC STOP ..... **\$25.95**

G.I. RECORDER AND PLAYBACK CRYSTAL CUTTER ..... **\$19.95**



#### G. I. OR DETROLA RECORD CHANGER

Plays 10- and 12-inch records. **\$14.49**

Telescopic Aerial—8 ft., 8 Section—Brass—With Mounting Bracket... 1.79  
With Heavy Shielded Lead ..... 2.19

25% Deposit, Bal. C.O.D. Plus Charges Write for Latest Catalog

## BONAFIDE RADIO CO.

89 1/2 Cortlandt St., Dept. J, N.Y.7,N.Y.

#### TONE CONTROL

(Continued from page 71)

Another thing. This whole system merely illustrates a method of correcting tone. You can use any part of it anywhere in an amplifier if you keep your levels and impedances in mind. To get 1 volt out at 1 kc, you have to put in 21 volts. So don't try to get 20 volts out. Not many tubes will put 400 volts in. Also if you run in a millivolt, you'll get only about 1/20 millivolt out; and that's pretty low, and you may have troubles with hum.

The hum has to be kept down with any system that boosts bass. You can shield your early filaments or even use d.c. if the level is very low and you want a lot of bass. Care in layout and wiring is most important. A 100-ohm potentiometer across the filament leads with the center to ground is handy. Most filament center taps aren't at the center, and you can balance out hum beautifully with a potentiometer. This was standard practice in the old receivers which used 26's and 45's in the audio end, and some of them had pretty good quality!

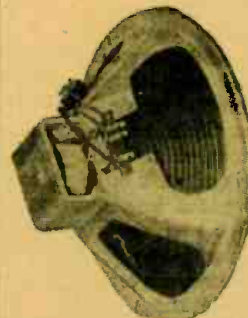
We arrived at this particular system by trial and error and fooling around. Others have also arrived at it. In case you never ran across it or in case you never understood it—here it is. The controls are completely independent of each other, and you'll be pleased with the way it works.

## APRIL SPECIALS

#### RCA 12" DYNAMIC SPEAKER

Here's the buy of the year—a 12 inch RCA dynamic speaker with field coil of 375 ohms resistance. Voice coil 6-8 ohms. Your cost at Almo, \$4.95

**YOUR COST \$4.95**



#### BC-645

Fifteen tube BC-645 converts to 420-500 MC. Instructions included for conversion for voice or CW and AC Power Supply Modulator. You probably have the few parts on hand necessary for conversion. At a price everyone can afford. Brand new. In original cartons, complete with tubes.

**YOUR COST \$9.95**



10% Cash with Orders **ALMO** Phone LO 3-9255  
Covers the Globe

509 ARCH STREET PHILADELPHIA, PENN.