

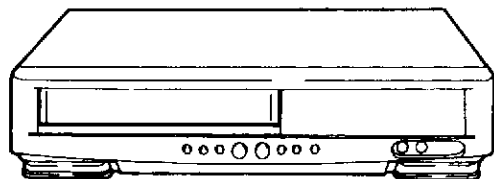
HITACHI

SERVICE MANUAL

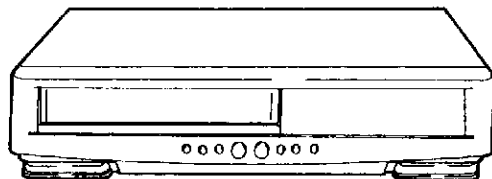
TK

No.4301E

VT-M170A/M171A
VT-M171AW/M265A
VT-M270A/M272A



— VT-M171A/M270A/M272A —

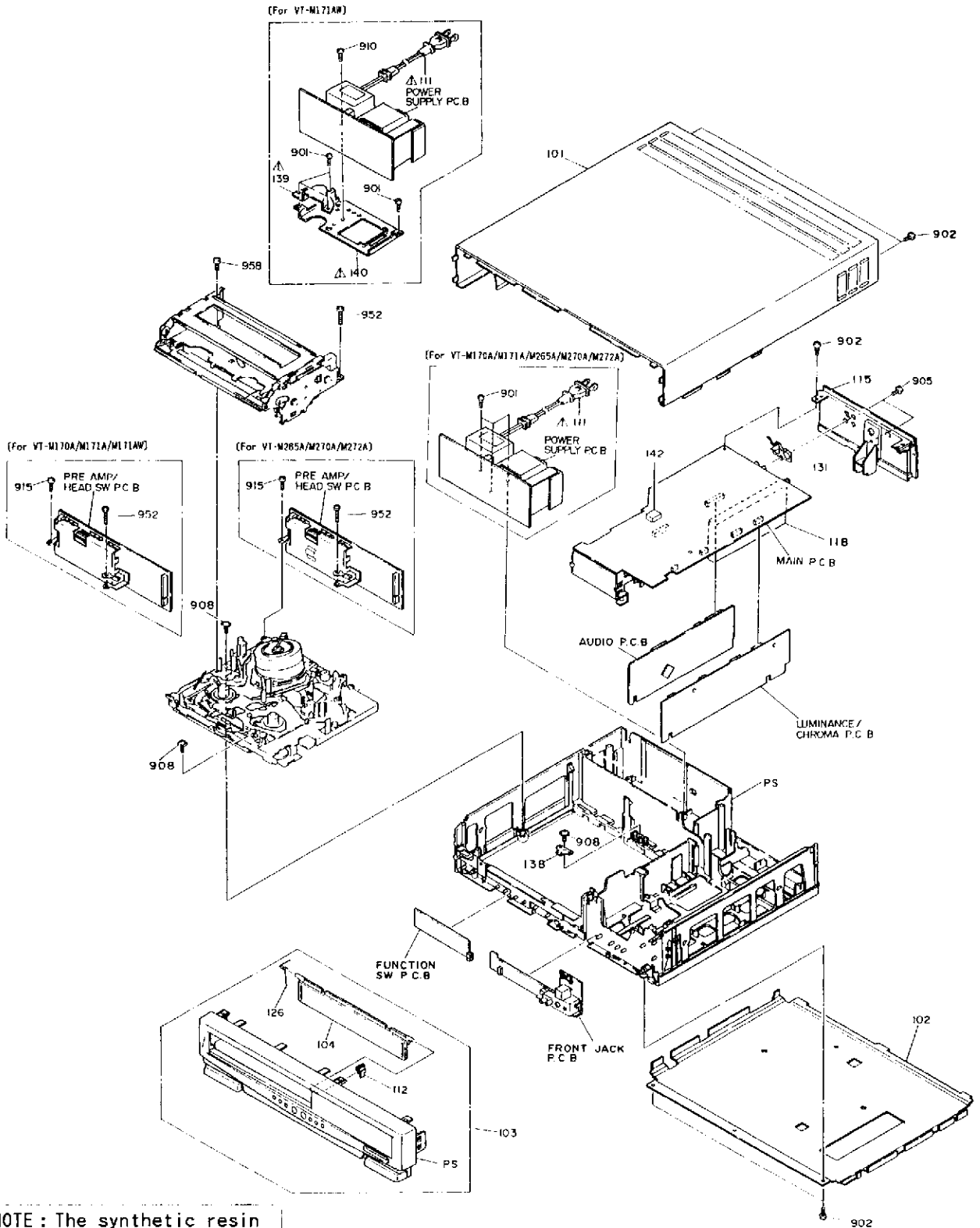


— VT-M170A/M171AW/M265A —

• Technical Specifications

Recording:	Rotary two-head helical scan azimuth recording
Video:	NTSC color EIA standard
Cassette:	VHS type
Heads:	2 video heads for SP and EP 1 full track audio/video erase head 1 combination head for control track, audio erase and audio record/play (3 heads/single housing)
Tape Speed:	33.35 mm/sec (SP, 16.67 mm/sec (LP) (playback only), 11.12 mm/sec (EP)
Tape Width:	12.7 mm
RF Output:	Channel 3 or 4
RF Input:	UHF/VHF 75 ohm
Turning Range:	VHF LOW CH, 2-6 (54 MHz - 88 MHz) VHF MID CH, A-5 - A-1 and A-1 (90 MHz - 174 MHz) CATV VHF HIGH CH, 7-13 (174 MHz - 216 MHz) VHF SUPER CH, J-W (216 MHz - 300 MHz) CATV

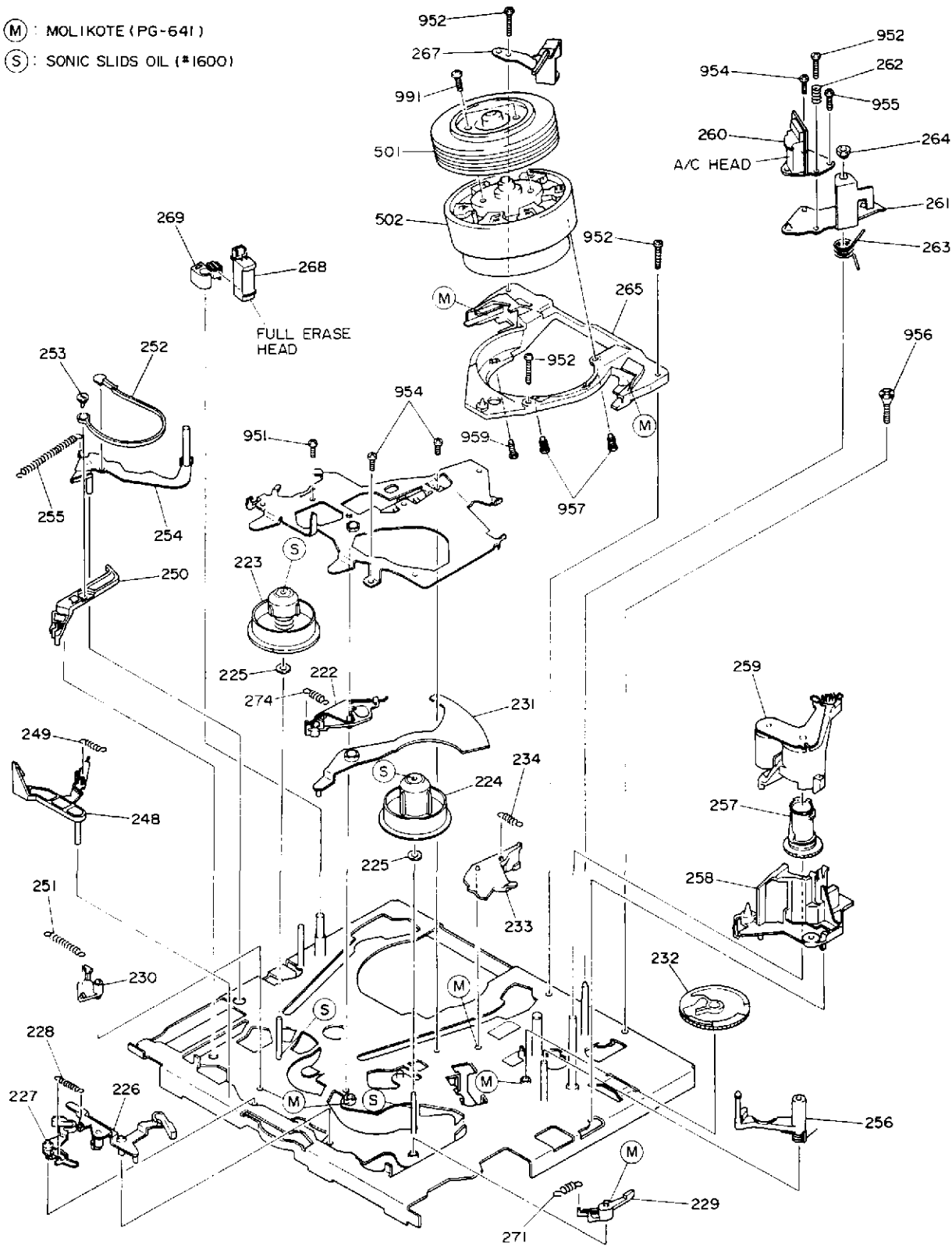
EXPLODED VIEWS
1. CABINET SECTION



NOTE: The synthetic resin members that can be dismantled are shown by abbreviations using letters.

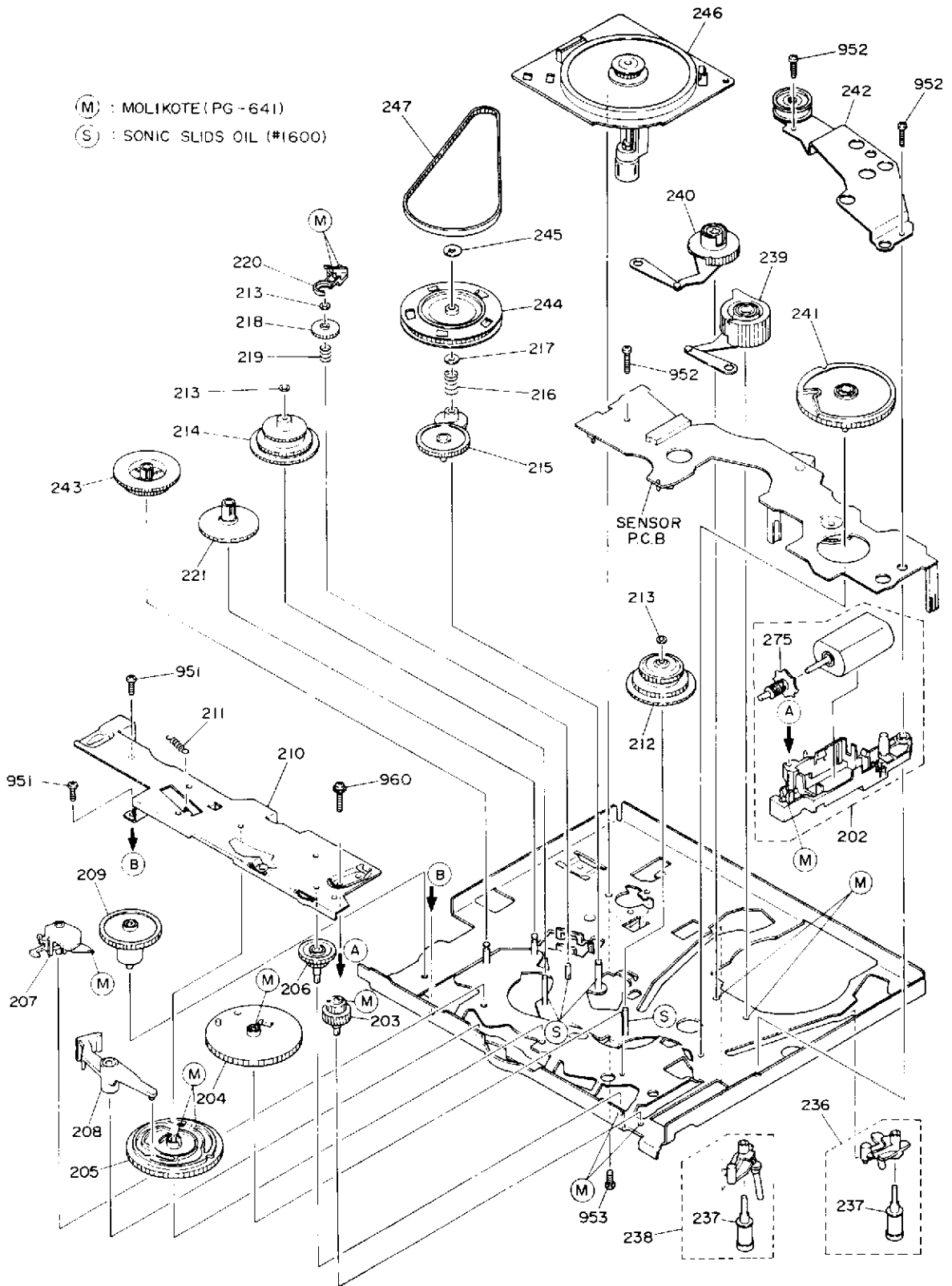
(M) : MOLIKOTE (PG-641)

(S) : SONIC SLIDS OIL (#1600)

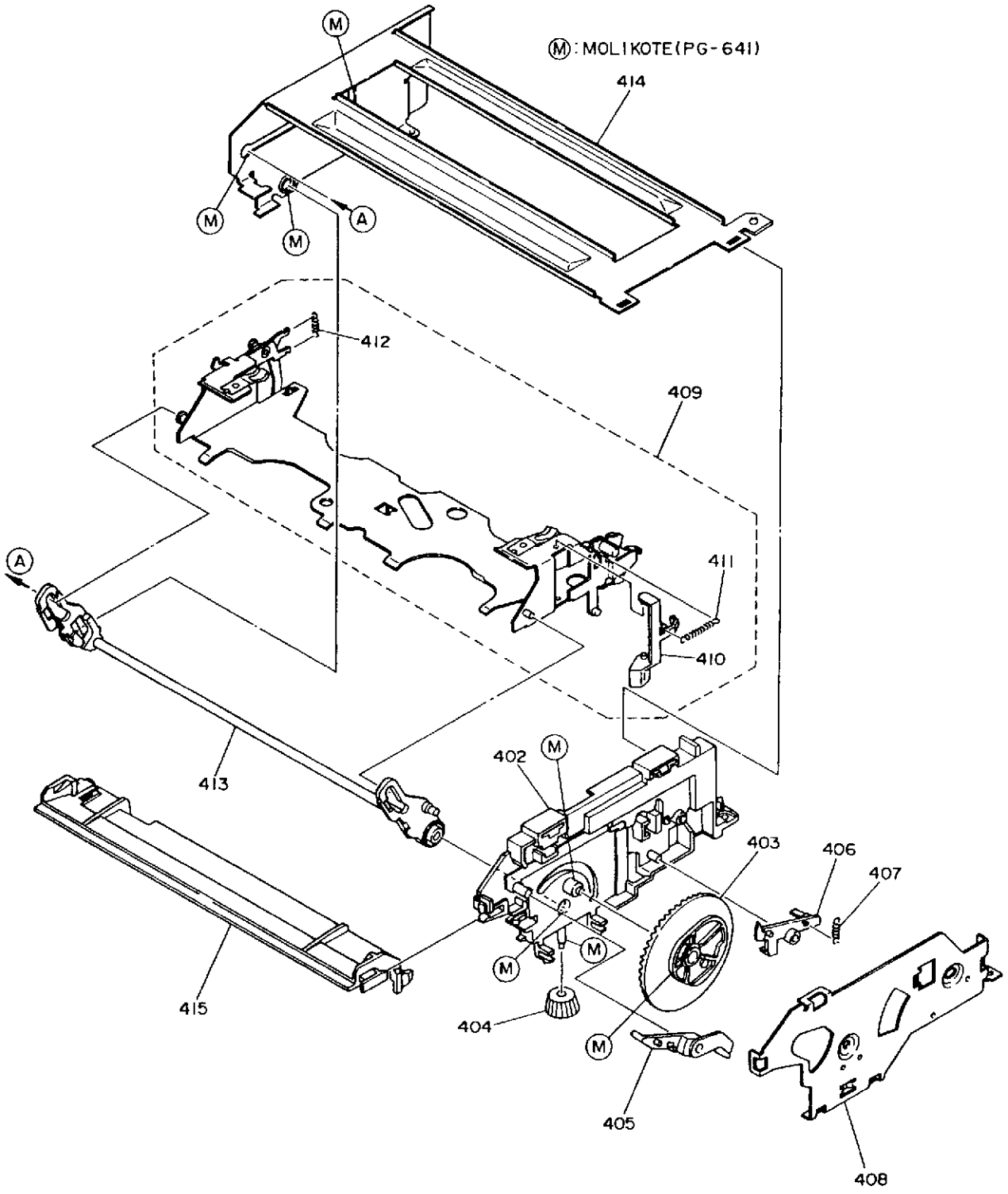


(M) : MOLIKOTE (PG-641)

(S) : SONIC SLIDS OIL (#1600)



(M) : MOLIKOTE (PG-641)



REPLACEMENT PARTS LIST

1. MECHANICAL PARTS LIST

Note : This replacement parts list applies to the following model.

Applicable model: VT-M171A

: Obtain the components marked with asterisks * in the parts list at your site.

SYMBOL-NO	P-NO	DESCRIPTION	SYMBOL-NO	P-NO	DESCRIPTION
FOR FINAL ASSEMBLY			253	6823511	SHAFT
			254	6500683	ARM, TENSION
			255	6553352	SPRING
101	6009461	COVER, TOP	256	6638935	ARM
102	* 6009474	COVER, BOTTOM	257	6823521	GEAR, CAM
103	* 4725321	PANEL, FRONT	258	6823445	BRACKET
104	* 4723415	DOOR, CASSETTE	259	6500431	ROLLER, PRESSURE
△111	5891408	CORD, POWER	260	5434151	HEAD, AUDIO CONTROL
112	4590321	STOPPER, DOOR	261	6500592	BASE, HEAD
115	* 4725971	PANEL, REAR	262	6304906	SPRING
118	* 5582211	TUNER IF UNIT	263	6553151	SPRING
126	6551851	SPRING, DOOR	264	7785673	NUT
131	7479971	PLATE	265	6638903	BASE, CYLINDER
138	7429641	BRACKET	267	5794062	BRUSH
142	6562924	RUBBER	268	5423071	HEAD, FULL ERASE
202	6500761	MOTOR, LOADING	269	6823462	BASE, HEAD
203	6441371	GEAR	271	6558502	SPRING
204	6441392	GEAR	274	6320576	SPRING
205	6441403	GEAR	275	6816211	WORM
206	6441381	GEAR	402	6823612	BRACKET
207	6823133	ARM	403	6823621	GEAR
208	6823171	ARM, OPERATION	404	6823631	GEAR
209	6441421	GEAR	405	6823641	ARM
210	6500332	PLATE	406	6823652	ARM
211	6558551	SPRING	407	6558531	SPRING
212	* 6405182	GEAR	408	6500612	BRACKET
213	7788341	WASHER	409	6500622	HOLDER
214	6405191	GEAR	410	6823691	ARM
215	6401445	ARM	411	6558541	SPRING
216	6522979	SPRING	412	6558561	SPRING
217	6500841	WASHER	413	6823662	ARM
218	6441433	GEAR, CHANGE	414	6500671	BRACKET
219	6522978	SPRING	415	6823701	HOLDER
220	6823183	ARM	501	5457962	UPPER CYLINDER(CY-Z2N)
221	6441411	GEAR	502	5435681	CYLINDER LOWER(CY-G2NA)
222	6823314	ARM	901	8699410	SCREW(3X10)
223	6416631	REEL, TABLE(S)	902	8699412	SCREW (3X12) BLACK
224	6416651	REEL, TABLE(T)	905	7781582	FALT SCREW-3MMDX10MM(BLACK)
225	7789126	WASHER	908	7781138	SCREW(3X10BT)
226	6823195	ARM, BRAKE (R)	915	0671305	DT SCREW-2.6MMDX5MM
227	6823229	ARM, BRAKE (L)	951	0711304	SCREW(2.6X4)
228	6318613	SPRING	952	0711312	PAN HEAD SCREW-2.6MMDX12MM
229	6823271	BRAKE	953	8691306	BT SCREW 2.6MM
230	6823261	BRAKE	954	0711306	PAN HEAD SCREW-2.6MMDX6MM
231	6500414	ARM	955	7773741	SCREW
232	6823251	GEAR	956	45281813	SCREW
233	6823292	BRAKE	957	7775582	SCREW
234	6558452	SPRING	958	7773761	SCREW
236	6638941	BASE, GUIDE ROLLER(IN)	959	8741408	SCREW(B3X8)
237	4583122	GUIDE ROLLER	960	8650914	SCREW(2.6X14)
238	6638952	BASE, GUIDE ROLLER(OUT)	991	7784131	SCREW(3X8)
239	6500504	GEAR, LOADING (L)	FOR ACCESSARIES		
240	6500463	GEAR, LOADING (R)	802	5861141	VCR COAXIAL RF CABLE
241	6823536	GEAR, MODE	803	5616491	REMOTE HAND SET
242	6500548	PLATE			
243	6823541	GEAR			
244	6823332	PULLEY			
245	6500841	WASHER			
246	1470083	DC MOTOR			
247	6359061	BELT			
248	6823422	ARM			
249	6553361	SPRING			
250	6823435	ARM			
251	6553301	SPRING			
252	6823473	BAND, TENSION			

POWER SUPPLY (REG) SCHEMATIC DIAGRAM

