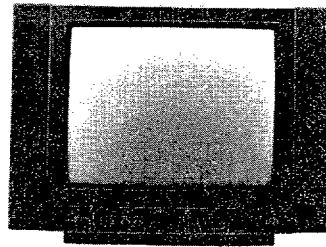


Service  
Service  
Service



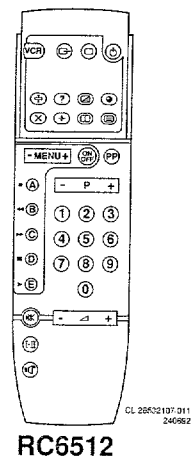
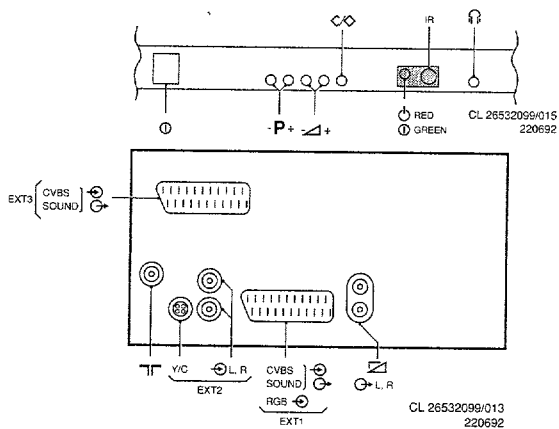
44 210 A11

# Service Manual



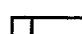


Safety regulations require that the set be restored to its original condition and that parts which are identical with those specified be used.

Les normes de sécurité exigent que l'appareil soit remis à l'état d'origine et que soient utilisées les pièces de rechange identiques à celles spécifiées.

## Chassis GR2.2

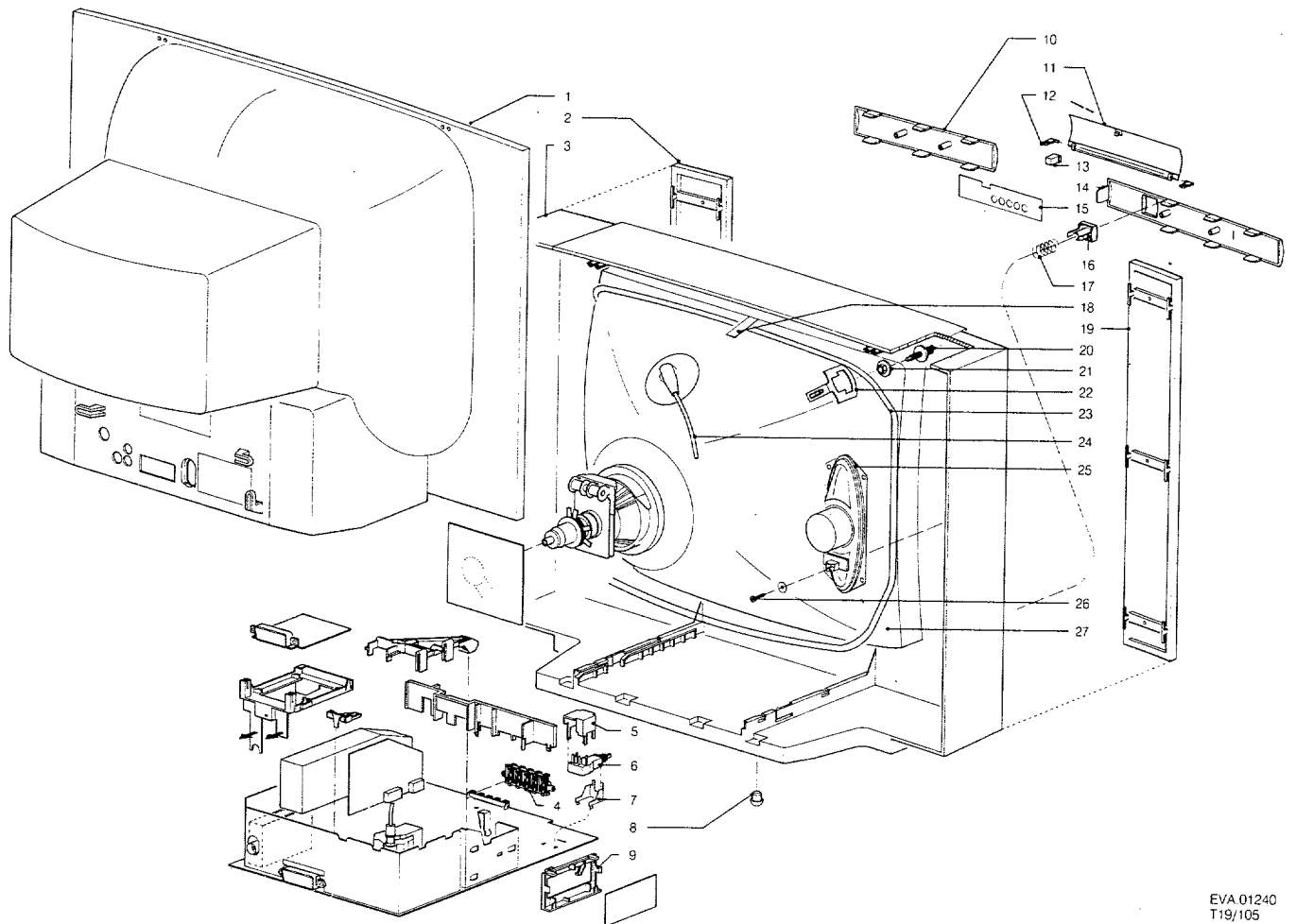


RC6512

 <p>220-240 V (± 10%) 140 W max.</p>	 <p>-/19 : PAL BGI SECAM BGLL'</p>	 <p>UV916: 45-855 MHz</p>
 <p>axbxc 25": 730x535x447 mm</p>	<p>-/02 : PAL BG</p>	 <p>2x20 W 8Ω</p>



**PHILIPS**



EVA 01240  
T19/105

1	4822 438 40205	Rear cover	20	4822 502 12865	Picture tube spindle
2	4822 458 50374	Grill right	21	4822 505 10903	Picture tube nut
3	4822 430 50809	Cabinet	22	4822 404 30869	Degaussing coil bracket
4	4822 410 61347	Control knob assy	23	4822 157 63747	Degaussing coil
5	4822 432 92785	Mains switch cover	24	4822 320 20182	EHT cable assy
6	4822 276 12916	Mains switch	25	4822 240 40162	Loudspeaker
	4822 053 21915	Res. 9M1 (on mains switch)	26	4822 502 30672	Screw 10x3 mm
7		Not used	26	4822 502 13712	Screw 12x3 mm
8	4822 462 71537	Foot	27	4822 131 20482	Picture tube A59EAK71X03
9	4822 404 31181	Bracket fixing mains module			
10	4822 432 92885	Front cover right	4822 218 21079	Remote control RC6512	
11	4822 432 92748	Door	4822 432 92761	Battery cover RC6512	
12	4822 432 92754	Hinge	4822 432 92762	Top cover RC6512	
13	4822 417 50252	Locking mechanism			
14	4822 432 92888	Front cover left			
15	4822 454 12742	Indication strip			
16	4822 410 61825	Mains knob			
17	4822 492 32656	Spring behind mains knob			
18	4822 404 30709	Degaussing coil clip			
19	4822 458 50373	Grill left			