

The transformer is 1:1
600 Ohms, with a 1500
volt breakdown rating.

The zener diodes are
3.9 volt devices, such
as a type 1N5228.

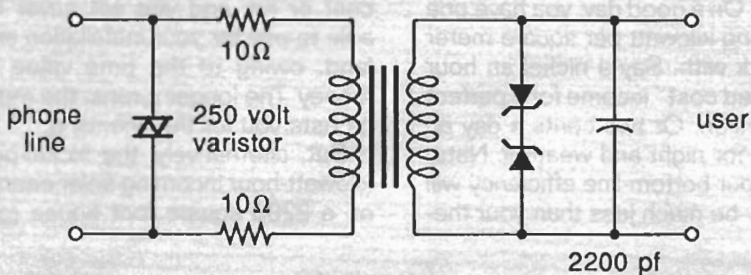


FIG. 4—A FCC PART 68 INTERFACE is required any time you connect any circuit of your own to the phone line. While this interface can be both simple and cheap, the required submission and approval process is not.