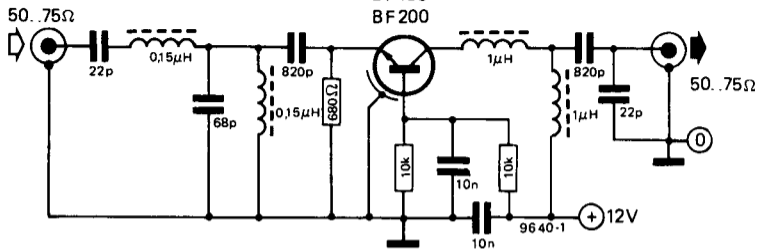


**100** This amplifier is intended for use in the 88-108 MHz VHF-FM band. It uses fixed input and output circuits.

Figure 1 shows how the amplifier is connected for use with a separate power supply cable; figure 2 shows the connections for supplying power via the coax cable. For optimum results, a trimming potentiometer of 2 k can be connected in series with the emitter resistor, and a trimmer of 10-40 p between the junction of the 22 p capacitor/0.15  $\mu$ H choke coil and common. These controls are set for maximum S/N ratio. The gain is 12 to 15 dB at a noise figure of 2 dB.

BF 180  
BF 200



BF 180  
BF 200

