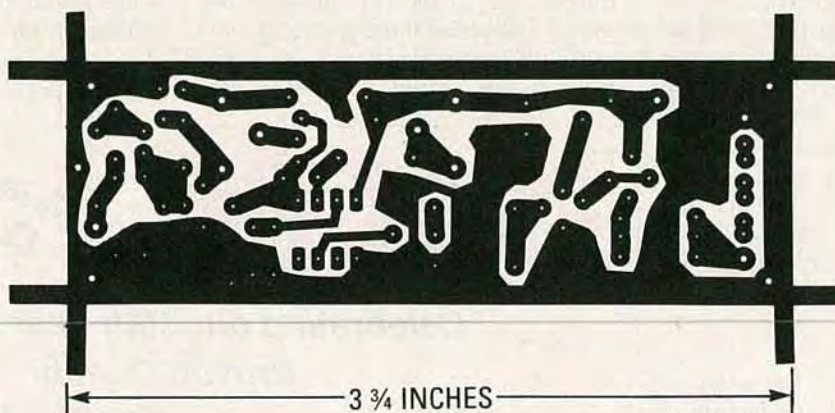
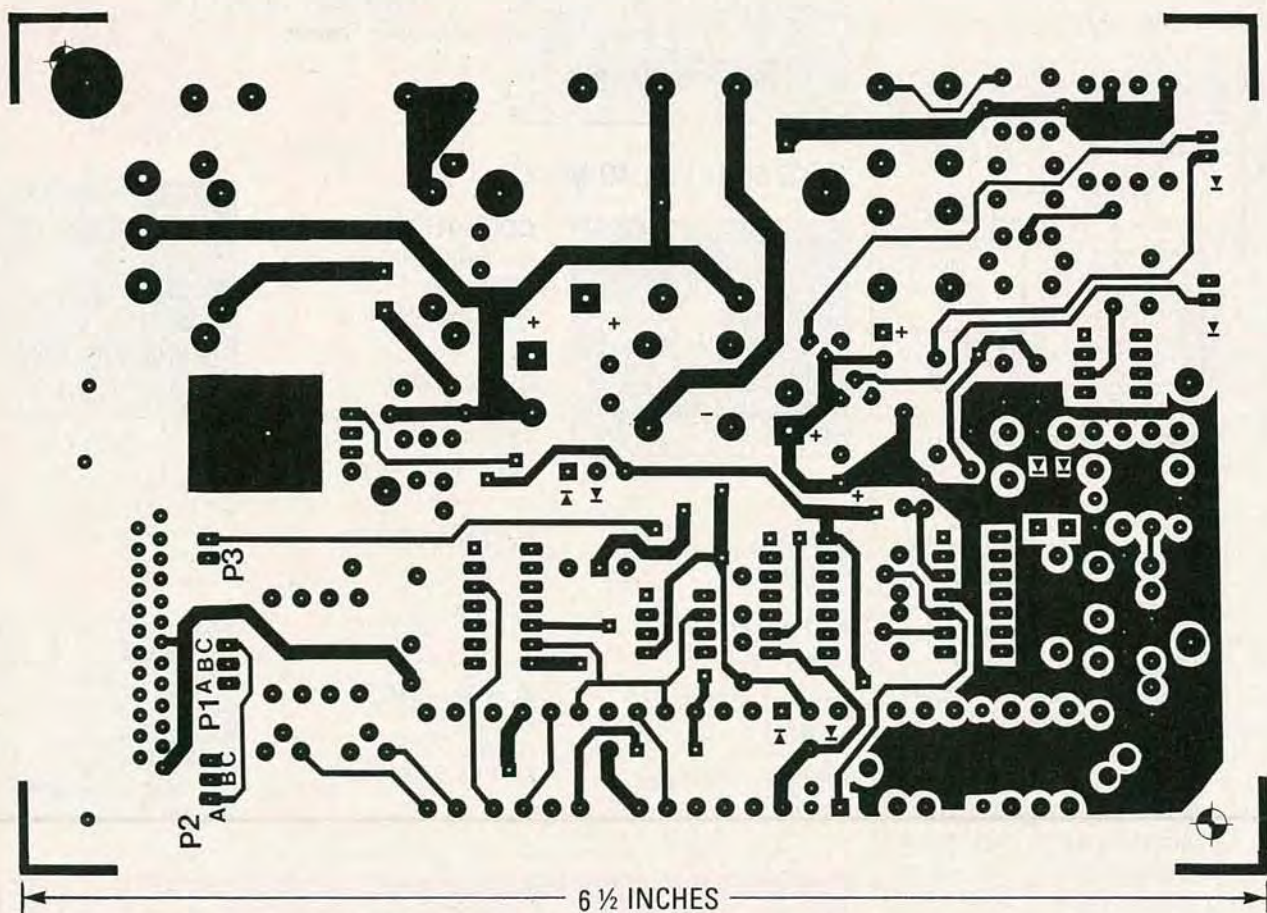


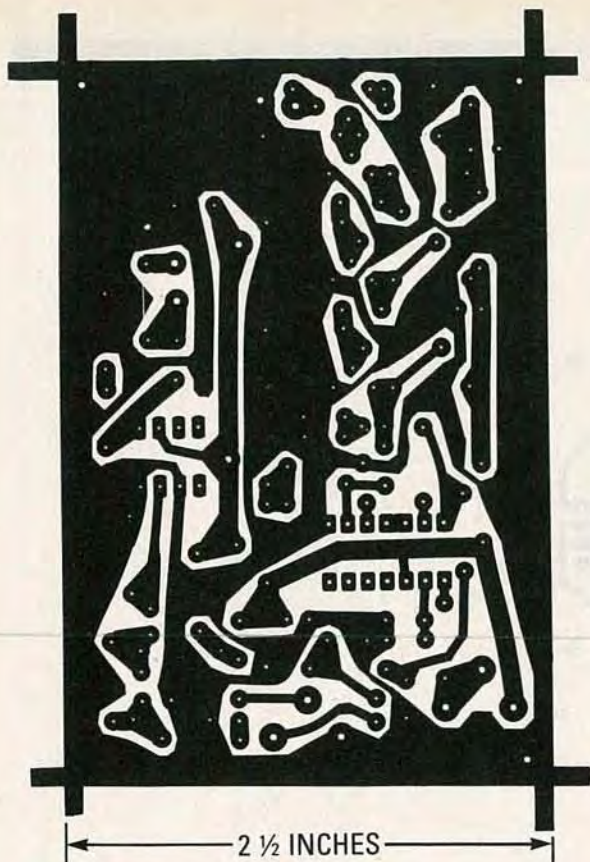
PC SERVICE



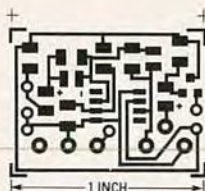
THE INFRARED TRANSMITTER board shown here is full sized.



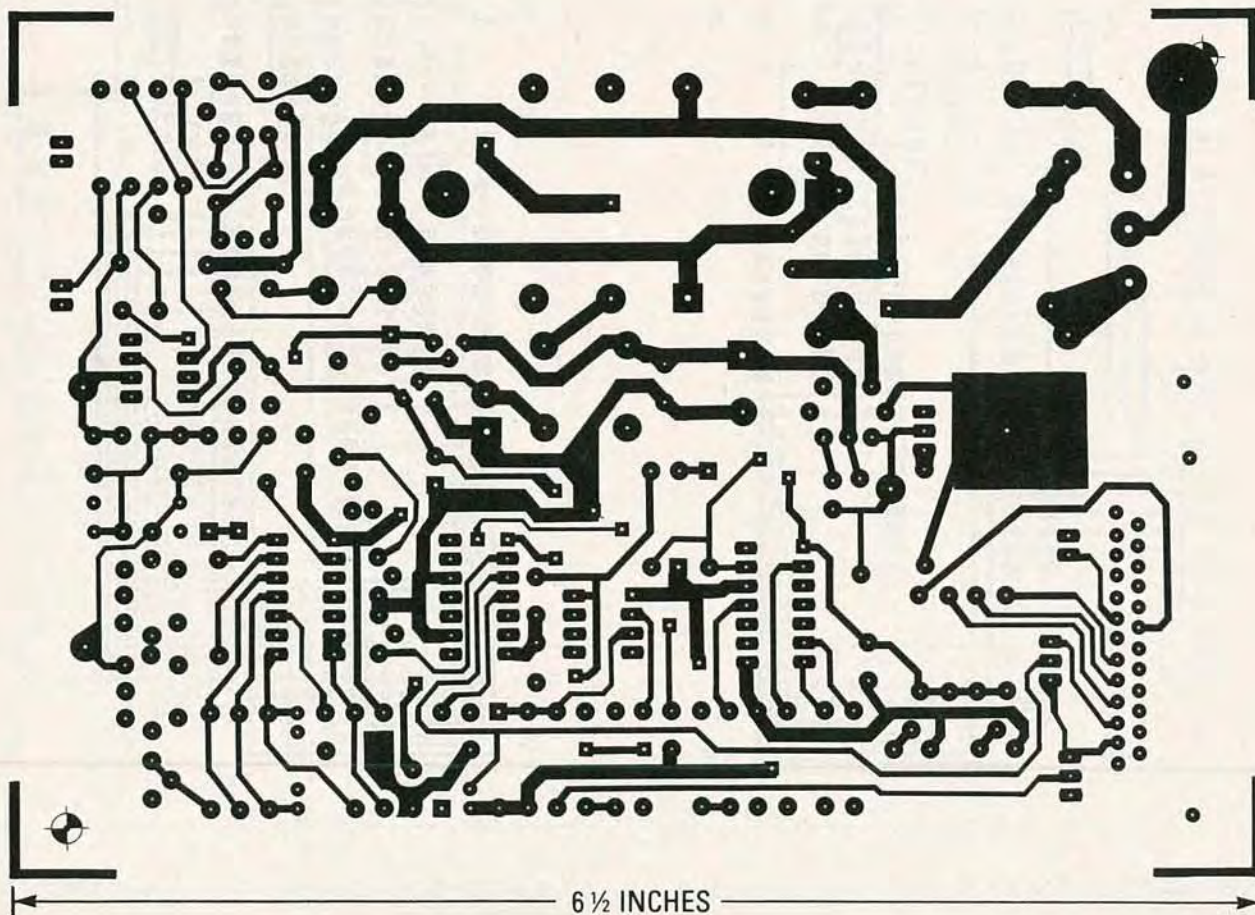
THE COMPONENT SIDE of the line carrier modem board is shown here.



THE PATTERN for the IR receiver is shown here.

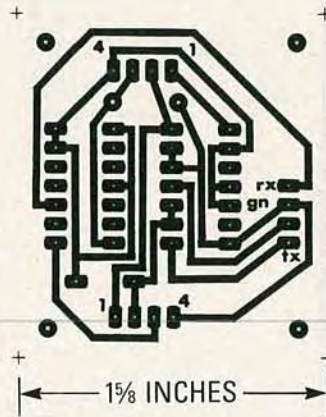


THE SMT AMPLIFIER pattern is shown here at twice its actual size.

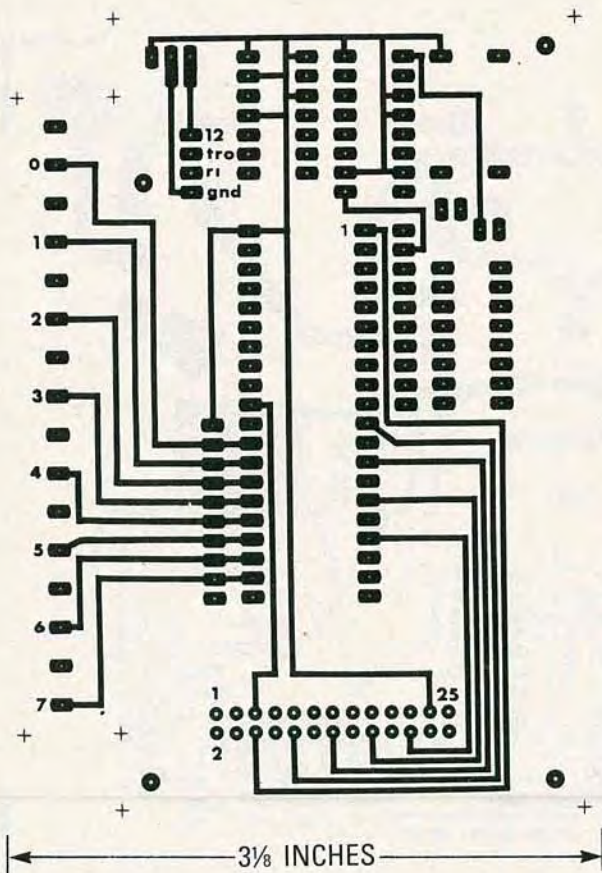


THIS IS THE SOLDER SIDE of the line carrier modem board.

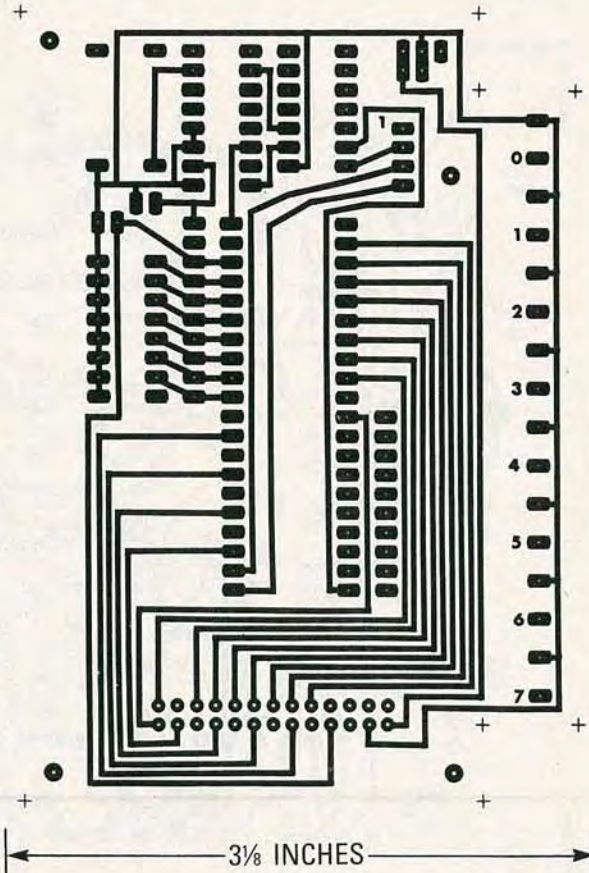
PC SERVICE



THIS IS THE COMPONENT SIDE of the RS-232 interface board.



THE SOLDER SIDE of the RS-232 node circuit board is shown here.



THE COMPONENT SIDE of the RS-232 node circuit board is shown here.