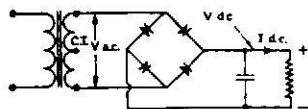


STANDARD POWER SUPPLY CONFIGURATIONS

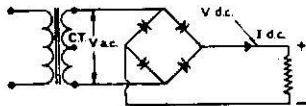
**FULL-WAVE BRIDGE -
CAPACITIVE INPUT FILTER**



$$V_{dc} = 1.41 \times V_{ac}$$

$$I_{dc} = 0.82 \times I_{ac}$$

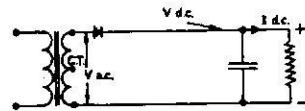
**FULL-WAVE BRIDGE -
RESISTIVE LOAD**



$$V_{dc} = 0.90 \times V_{ac}$$

$$I_{dc} = 0.90 \times I_{ac}$$

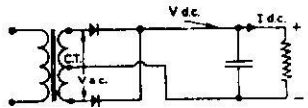
**HALF-WAVE -
CAPACITIVE INPUT FILTER**



$$V_{dc} = 1.41 \times V_{ac}$$

$$I_{dc} = 0.28 \times I_{ac}$$

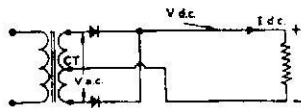
**FULL-WAVE -
CAPACITIVE INPUT FILTER**



$$V_{dc} = 0.71 \times V_{ac}$$

$$I_{dc} = 1.0 \times I_{ac}$$

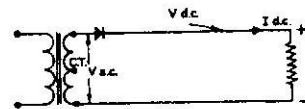
**FULL-WAVE -
RESISTIVE LOAD**



$$V_{dc} = 0.45 \times V_{ac}$$

$$I_{dc} = 1.27 \times I_{ac}$$

**HALF-WAVE -
RESISTIVE LOAD**



$$V_{dc} = 0.45 \times V_{ac}$$

$$I_{dc} = 0.64 \times I_{ac}$$