

10

5 A Regulator

LM338 parameters:

Maximum input/output difference = 35 V

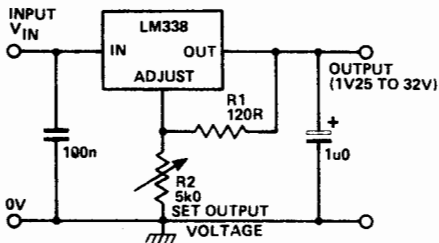
Maximum output current = 5 A

Ripple rejection = 85 dB

Thermal resistance, junction to case = 1°C/W

$$V_{OUT} = 1.25 (R1 + R2) / R1$$

$$P_{DISS} = I_{OUT}(V_{IN} - V_{OUT}). \text{ Use a heatsink.}$$



BOTTOM
VIEW