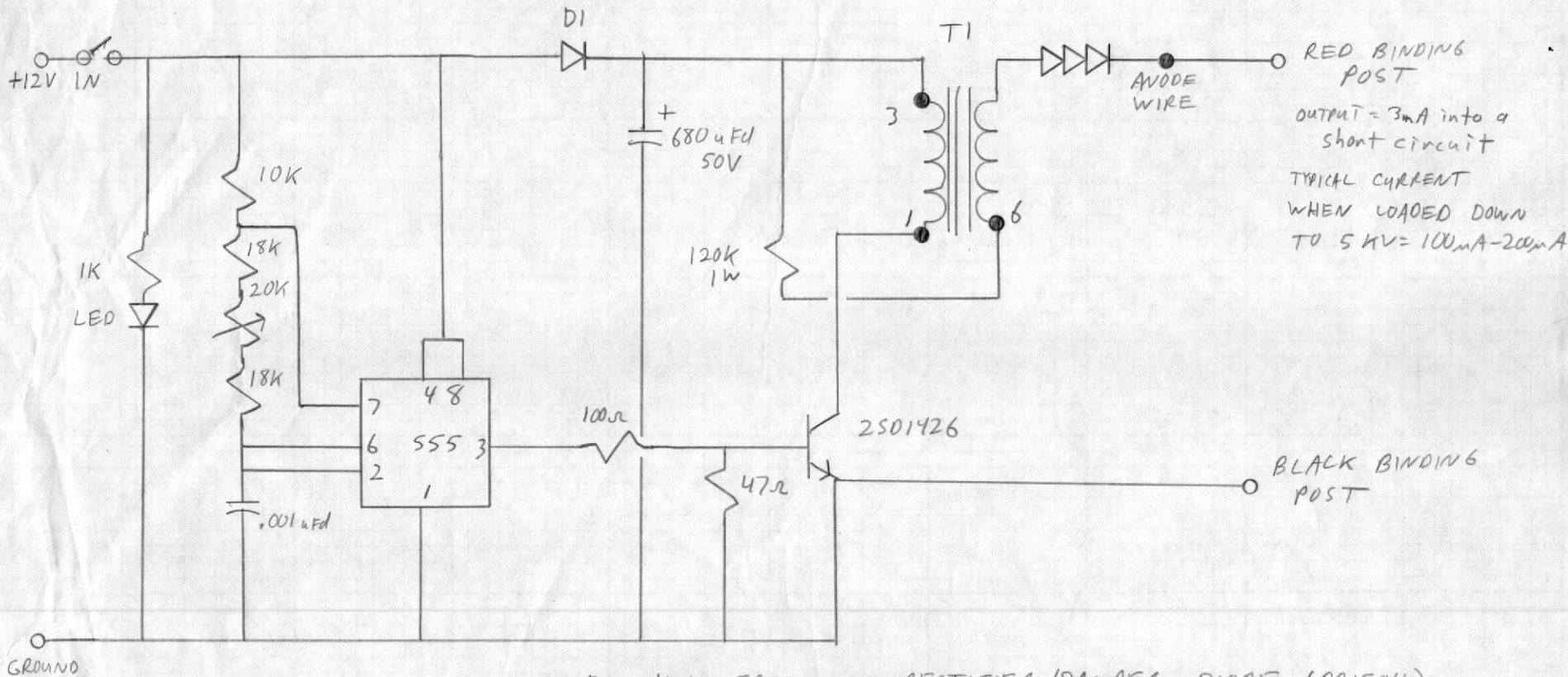


10KV POWER SUPPLY (5KV-12.5KV)
 BUILT FOR ACRO-TECH CONSULTANTS



RED BINDING POST
 OUTPUT = 3mA into a short circuit
 TYPICAL CURRENT WHEN LOADED DOWN TO 5KV = 100mA-200mA

D1 = HIGH FREQUENCY RECTIFIER/DAMPER DIODE (PR1504)

T1 = KFB3060B HORIZONTAL OUTPUT TRANSFORMER FOR MTC BRAND 14" COLOUR TV

NORMAL CURRENT DRAW = 130mA
 (375mA IF OUTPUT SHORTED)

David Fraser
 May 27, 1986