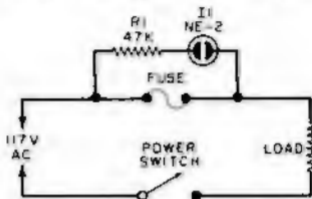


BLOWN-FUSE INDICATOR

This simple circuit will enable you to tell at a glance whether you have blown a fuse—without removing the fuse from its holder. As long as the fuse is good, no



current will flow through $R1$ and $I1$, an NE-2 neon bulb. If the fuse blows, the ac takes the alternate path through $R1$ and $I1$. A 47,000-ohm, $\frac{1}{2}$ -watt resistor is used to limit current through $I1$ to a safe value. Mount $I1$ in any convenient (but visible) location.—*Ross Thompson, Listowell, Ontario, Can.*