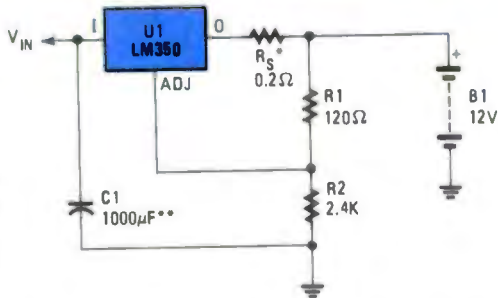


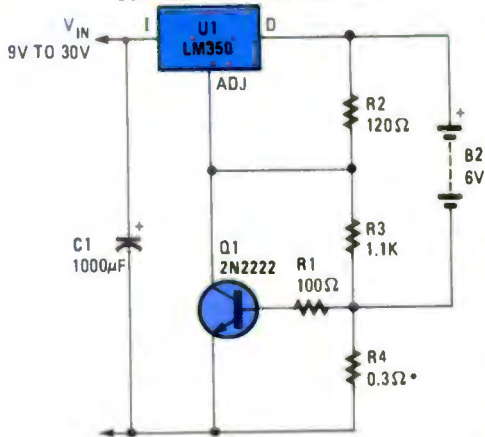
SIMPLE 12V BATTERY CHARGER



* R_S —SETS OUTPUT IMPEDANCE OF CHARGER $Z_{OUT} = R_S \left(1 + \frac{R_2}{R_1}\right)$
 USE OF R_S ALLOWS LOW CHARGING RATES WITH FULLY CHARGED BATTERY.

**THE 1000μF IS RECOMMENDED TO FILTER OUT INPUT TRANSIENTS.

CURRENT LIMITED 6V CHARGER



* SETS PEAK CURRENT (2A FOR 0.3Ω)