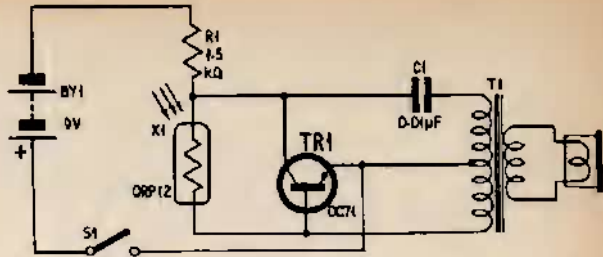


INFRA-RED DETECTOR

IN the November 1965 issue of PRACTICAL ELECTRONICS there is an article by J. H. du Bois about constructing a Code Practice Oscillator. On experimenting with this oscillatory circuit I produced a unit which may be used as an infra-red ray detector.

To operate the unit the photoelectric cell is allowed to move into the presence of infra-red rays.

The rays and the strength of the rays are determined by the pitch of oscillation the oscillator produces. A low pitch note for weak rays and a high pitch note for strong rays. The unit can also be used to determine the strongest point of infra-red rays from an appliance corresponding to the highest pitch of note produced by the detector unit.



The detector unit is portable and the infra-red sensor is housed in a pen and covered by an infra-red filter such as Everine black tile. The sensor is then attached to the detector unit by microphone cable.

J. Walker, Dunfermline, Fife.