

S/M No.:DWM161011

Service Manual

Washing Machine

Model : **DW-1050**
DW-1051

• **Caution:**

In this Manual, some parts can be changed for improving, their performance without notice in the parts list. So, if you need the latest parts information, please refer to PPL(Parts Price List) in Service Information Center (<http://svc.dwe.co.kr>).

Sep. 2001

DAEWOO
ELECTRONICS



ASHER AUTO WASHER AUTO WASHER AUTO WASHER AUTO WASHER AUTO WASHER AUTO WASHER AUTO WASHER AUTO WASHER AUTO WASHER AUTO WASH
TO WASHER AUTO WASHER AUTO WASHER AUTO WASHER AUTO WASHER AUTO WASHER AUTO WASHER AUTO WASHER AUTO WASHER AUTO WASHER AU
ASHER AUTO WASHER AUTO WASHER AUTO WASHER AUTO WASHER AUTO WASHER AUTO WASHER AUTO WASHER AUTO WASHER AUTO WASHER AUTO WASH
TO WASHER AUTO WASHER AUTO WASHER AUTO WASHER AUTO WASHER AUTO WASHER AUTO WASHER AUTO WASHER AUTO WASHER AUTO WASHER AU
ASHER AUTO WASHER AUTO WASHER AUTO WASHER AUTO WASHER AUTO WASHER AUTO WASHER AUTO WASHER AUTO WASHER AUTO WASHER AUTO WASH
TO WASHER AUTO WASHER AUTO WASHER AUTO WASHER AUTO WASHER AUTO WASHER AUTO WASHER AUTO WASHER AUTO WASHER AUTO WASHER AU
ASHER AUTO WASHER AUTO WASHER AUTO WASHER AUTO WASHER AUTO WASHER AUTO WASHER AUTO WASHER AUTO WASHER AUTO WASHER AUTO WASH

Contents

WASHING MACHINE

1. SPECIFICATIONS	2
2. EXTERNAL VIEW	3
3. PRINCIPLES OF OPERATION AND EXPLANATION OF FUNCTIONS	4
4. DIRECTION FOR DISASSEMBLY AND ASSEMBLY	8
5. TROUBLESHOOTING GUIDE.....	11
6. EXPLODED VIEW AND PARTS LIST.....	16
7. WIRING DIAGRAM	23

1. SPECIFICATIONS

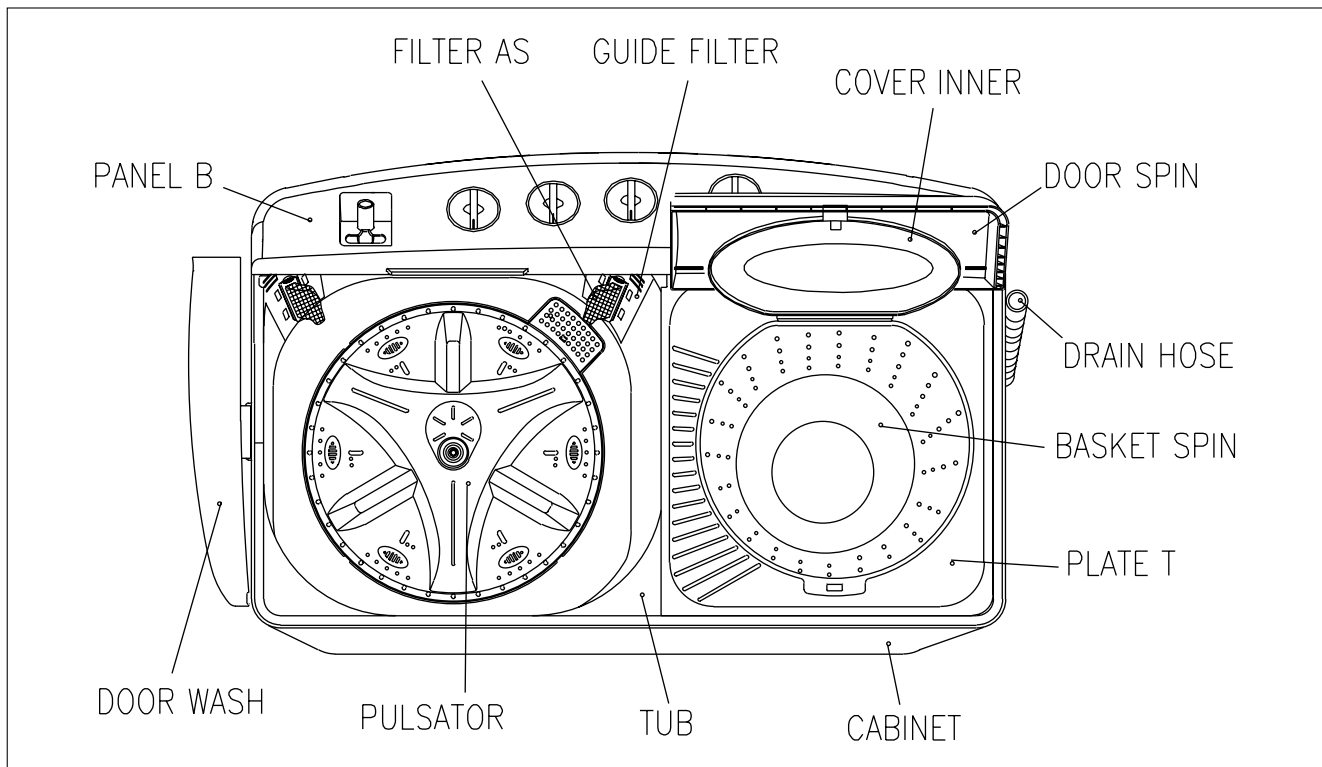
NO.	ITEM		SPECIFICATIONS					
	1	POWER SOURCE	VOLTAGE	AC 110V	AC 220V	AC 127/220V	AC 110/220V	AC 220V
		FREQUENCY	60Hz			50Hz		
2	POWER CONSUMPTION	PUMP	580W			550W		
		NON PUMP	530W			500W		
3	DIMENSION		NET : 884X542X1020, PACKED UP : 898X558X1035 (WXDXH)					
4	MACHINE WEIGHT	PUMP	NET : 35kg, PACKED UP : 37kg					
		NON PUMP	NET : 34kg, PACKED UP : 36kg					
5	WASHING COURSE		STRONG, NORMAL					
6	WATER LEVEL		HIGH:80ℓ, MEDIUM:70ℓ, LOW:60ℓ					
7	REVOLUTION PER MINUTE	WASH	100 rpm			100 rpm		
		SPIN	1700 rpm			1400 rpm		
8	TIMER	WASH	MAX. 15 min., Manual operation					
		SPIN	MAX. 5 min., Manual operation					
9	WASHER TYPE		PULSATOR TYPE					
10	SPIN TYPE		CENTRIFUGALLY SEPARATED TYPE					
11	MAXIMUM MASS OF TEXTILE	WASH	8.0 kg (DWM-160C)			10.0 kg (DWM-170C)		
		SPIN	7.0 kg					
12	WATER SUPPLY		MANUAL					
13	SPIN RINSE		O					
14	OUTLET OF DRAIN HOSE		REAR					
15	LINT FILTER		O					

NOTE : Explanation table for suffix of names.

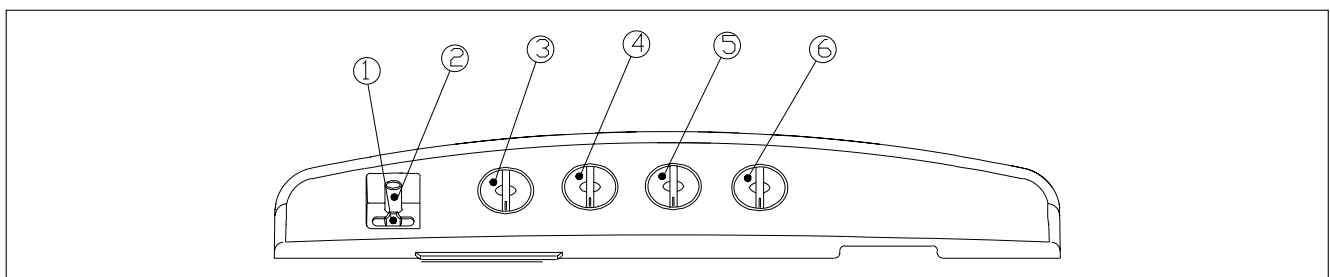
POWER SOURCE	SUFFIX		EXPLANATION
	NON PUMP	PUMP	
AC 100V 50/60Hz	J	-	<p>Model Name → DWM-XXXX N P ← Pump</p> <p>Power Source → XXXX</p>
AC 110V 60Hz	T	TP	
AC220V 50Hz	N	NP	
AC 220V 60Hz	L	LP	
AC 240V 50Hz	M	MP	
AC 110/220V 50Hz	D	-	
AC 127/220V 60Hz	S	-	

2. EXTERNAL VIEW

Structure Of The Washing Machine



Control Panel (Panel b Ass'y)



① LEVER WATER SUPPLY SELECTOR

Left : water supply in the WASH TUB.
Right : water supply in the BASKET SPIN.

② INLET WATER

Connect inlet hose to supply water in the WASH TUB or BASKET SPIN.

③ WASH TIMER

Use to select the desired time for washing or rinsing.

④ WASH ACTION

Use to select wash action. ("STRONG", "NORMAL")

⑤ VALVE SELECTOR

Select "WASH, RINSE" for washing and rinsing, and "DRAIN" to drain the water.
(In case PUMP MODEL turn on the drain pump)
"OFF" to turn off the drain pump. (Only PUMP MODEL)

⑥ SPIN TIMER

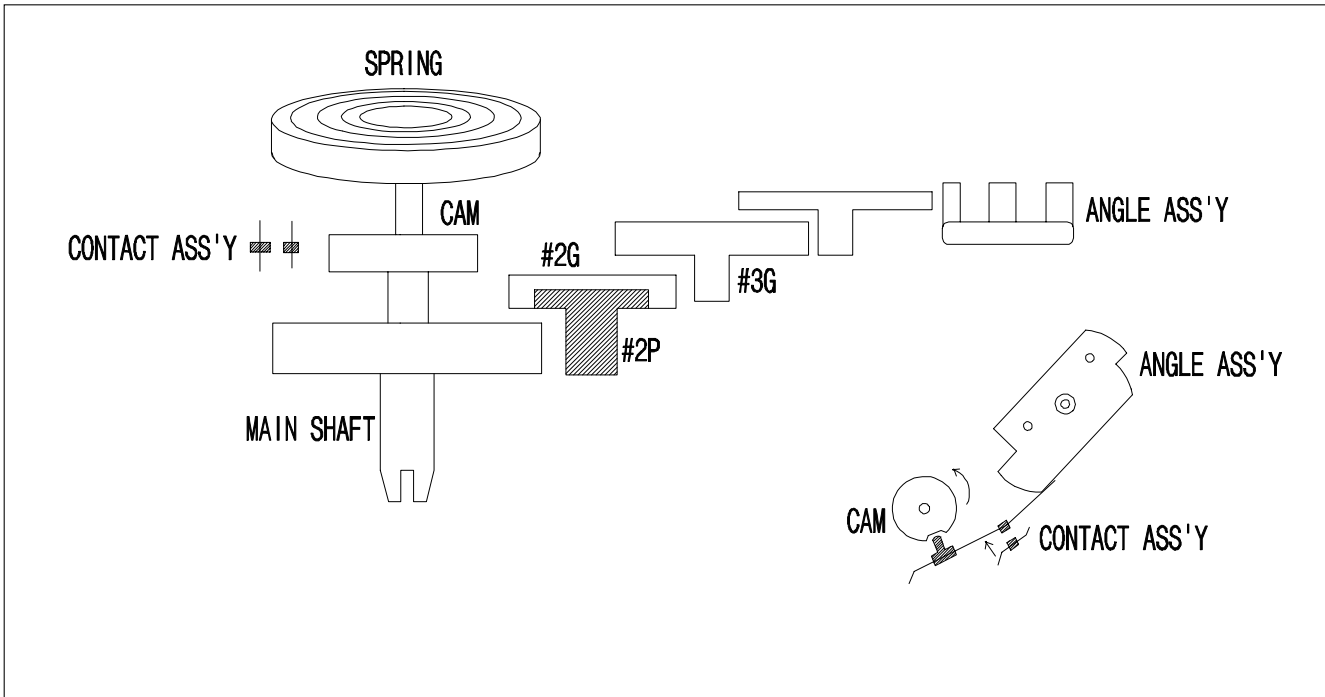
Used to select the desired time for spinning.

Spin Timer

FUNCTION

The spin timer is the switch providing power to the SPIN MOTOR(DRAIN PUMP MOTOR) during the set spin dry time, and is a spring-type time switch comes on turning and those contact points comes off after the set time.

STRUCTURE AND PRINCIPLE OF ACTIVATION



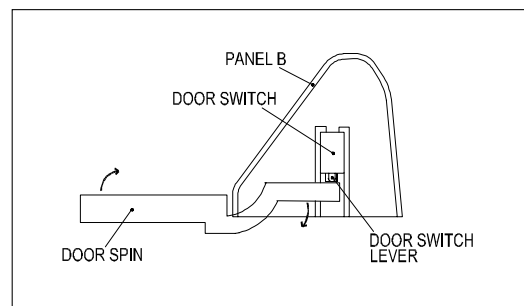
- 1) The main shaft turns due to the unwinding force when the spin timer is turned, the spring wound with that force being delivered through each gear and the spring slowly unwinding at a speed finally controlled by the angle assembly.
- 2) The contact point Turns ON and the assembly angle is set in motion which is in the CAM groove in the OFF state, comes off the groove when the main shaft is turned to wind the spring. The contact point turns OFF, return to CAM groove when the spring unwind completely.

SAFETY DEVICE FOR BASKET SPIN

The BASKET SPIN is an apparatus which eliminates the water from the laundry through centrifugal separation generated by rapid revolution(approximately 1,700rpm for 60Hz). Accordingly, there are a DOOR SWITCH to cut off the power going into the DOOR SPIN is opened and a brake system to stop the rotating BASKET SPIN.

DOOR SWITCH

When the DOOR SPIN is opened during spinning, the DOOR SWITCH LEVER which sites atop the DOOR SPIN falls off the contact, and cuts off the power going into the SPIN MOTOR.

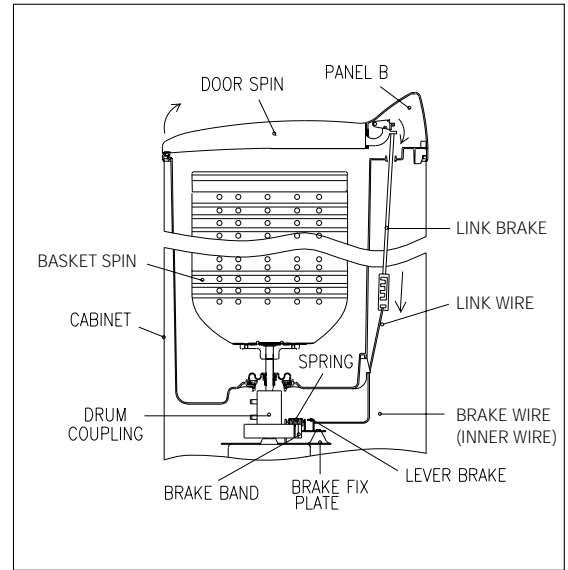


BRAKE SYSTEM

When the DOOR SPIN is opened, LINK BRAKE which connect to DOOR SPIN loosens. And then the BRAKE BAND touches the DRUM COUPLING assembly and stops the BASKET SPIN as it is pulled by the SPRING in the BRAKE FIX PLATE assembly.

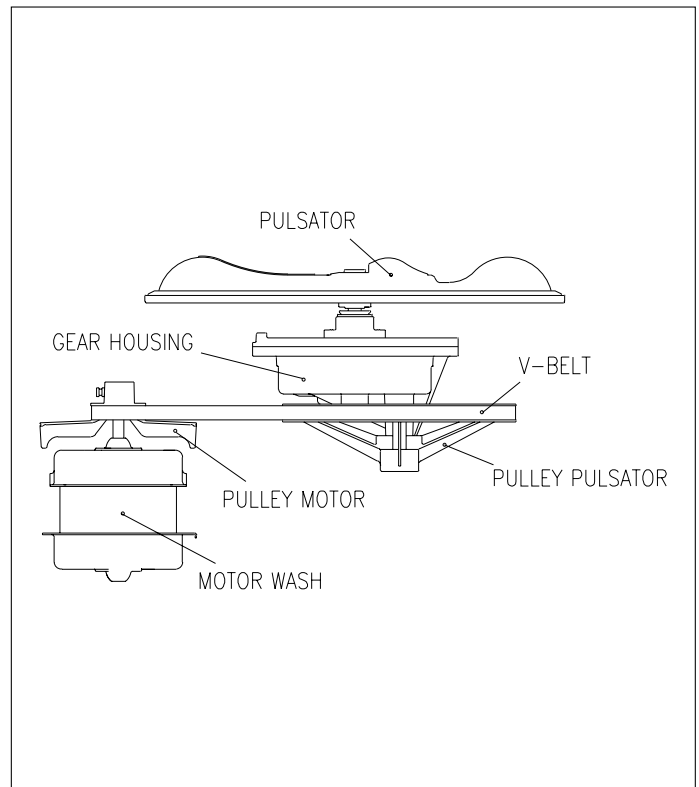
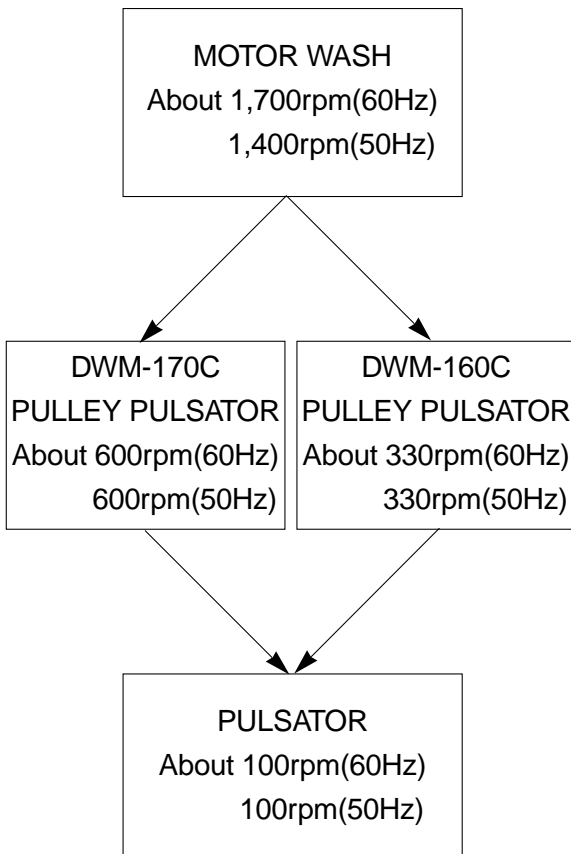
BRAKE BAND GAP CONTROL METHOD

The BAND BRAKE works best when the gap between it and the DRUM COUPLING is about 2mm when the DOOR SPIN is closed. The BASKET SPIN stops slowly if the gap between the two is too narrow, the BASKET SPIN revolution is affected and the PLATE CONTROL WIRE may be adjusted to maintain the BRAKE BAND gap adequately.



WASH DECELERATOR ASSEMBLY

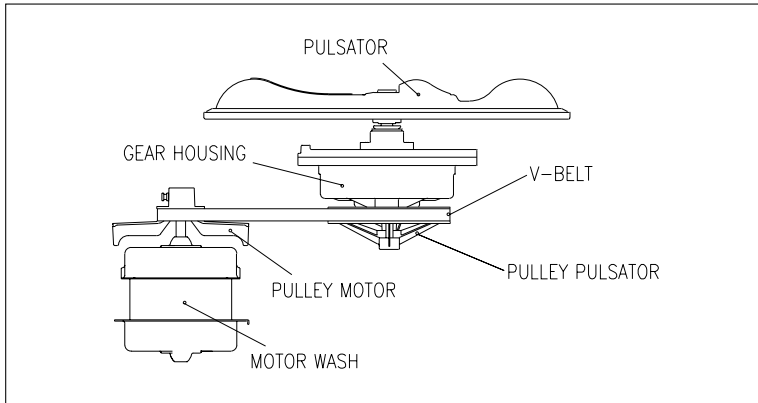
The initial deceleration following the activation of the WASH MOTOR takes place through the PULLEY MOTOR and PULLEY PULSATOR, and the secondary deceleration is done by the gear in the GEAR HOUSING which also increases their revolution strength. This revolution speed and strength is delivered to the PULSATOR, which is then able to cause water current that is strong yet soft so that wash loads are not damaged.



DWM-160C

GEAR HOUSING ASS'Y

The GRAR HOUSING ASSEMBLY is a transmission device which turns the PULSATOR at 3.3:1 (DWM-160C) or 6:1 (DWM-170C) lowered speed through the gear unit assembly which receives power at the GEAR SHAFT UNIT.



DWM-170C

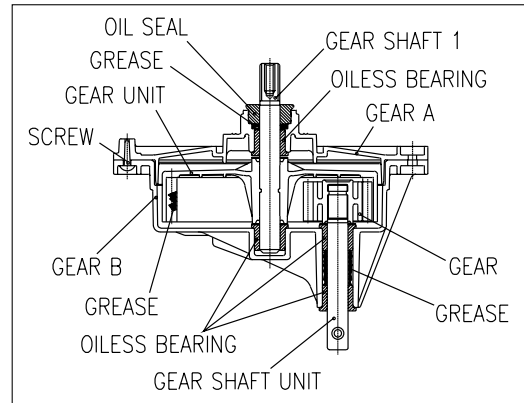
- 1) The two sides of the GEAR SHAFT UNIT are supported by the OILLESS BEARING in the GEAR HOUSING ASSEMBLY.
- 2) The GEAR UNIT ASSEMBLY is connected to the GEAR SHAFT 1 and GEAR SHAFT UNIT by the GEAR and GEAR UNIT respectively.
- 3) The two sides of GEAR SHAFT 1 are supported by the OIL SEAL and OILLESS BEARING in the GEAR HOUSING ASSEMBLY.

BELLOWS ASS'Y

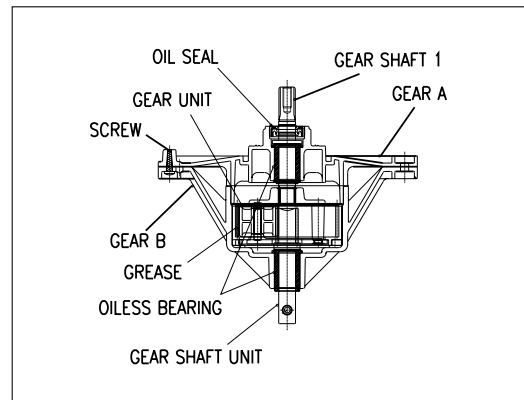
The wrinkled rubber device on the bottom of the BASKET SPIN is called BELLOWS ASSEMBLY.

It has a waterseal and a oilless metal inside to prevent leakage and so that the BASKET SPIN may work smoothly.

STRUCTURE (DWM-160C)



STRUCTURE (DWM-170C)

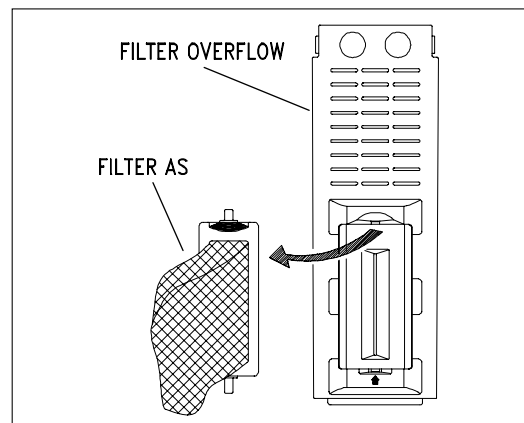


Filter

Much lint may be obtained depending upon the kind of clothes to be washed and some of the lint may also be suck to the clothes. To minimize this possibility, a lint filter is provide on the upper part of the FILTER OVERFLOW to filter the wash water. Use of the lint filter during every wash is recommend.

CLEANING THE LINT FILTER

- 1) Remove the FILTER AS from the FILTER OVERFLOW by pressing it downwards.
- 2) Turn the FILTER AS inside out, and wash the lint off with water.
- 3) Return the FILTER AS it was, and fix the FILTER AS to the FILTER OVERFLOW.



4. DIRECTION FOR DISASSEMBLY AND ASSEMBLY

Ass'y Panel Back

1. Remove 3 screws on the PANEL B.



2. Remove KNOB, wash timer and spin timer on the PANEL B.



3. Remove 3 screws and CONTROL LEVER



Basket Spin

4. Remove 4 screws on the COVER BACK.



5. Separate LINK BRAKE and ASSEMBLY BRAKE WIRE.



6. Remove 1 bolt and nut on the upper side of the DRUM COUPLING AS.



7. Remove the PLATE T on the TUB.



8. Lift up the BASKET SPIN.

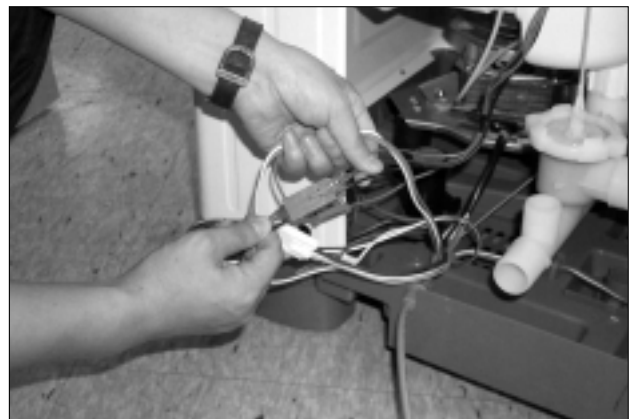


Ass'y Base Under

9. Remove 1 screw on the CABINET.



10. Separate HARNESS AS connectors.



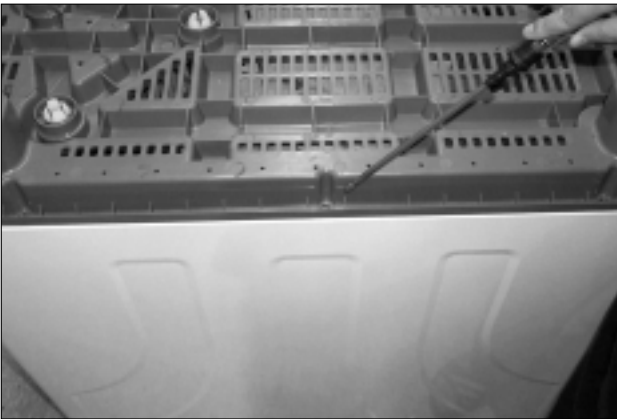
11. Remove a V-BELT from PULLEY MOTOR.



12. Turn over the washing machine.



13. Remove 7 screws on the BASE UNDER ASSY.



14. Remove 3 screws on the BRACKET MOTOR, and remove the SPIN MOTOR.



15. Remove 3 bolts on the BASE UNDER, and remove the WASH MOTOR.



16. Remove 1 screw on the FIXTURE PUMP. (In case of pump model)



5. TROUBLESHOOTING GUIDE



NOTES

Pull out the power plug to repair and make sure that the Washing Machine has been properly grounded.

Concerning Wash

PROBLEM	CHECK POINT	CAUSE	SOLUTION	
Pulsator does not rotate.	Is the Power properly connected?	NO	Reconnect the Power Cord.	
	YES ↓			
	Is there a whirring sound from the Wash Motor when turned on?			
	YES ↓			
	Is the Condenser properly connected?	NO	Motor does not start due to opening the Condenser circuit	Reconnect the Condenser.
	NO ↓			
	Is the Motor hot? (In case there is Thermal Protector)	YES	Power has been cut off by the Thermal Protector.	Wash restart when Motor cools.
	NO ↓			
	Is the Wiring good? (Refer to the Wiring Diagram)	NO	Improper wiring	Reconnect the wiring
	YES ↓			
Is the contact of Wash Timer good?	NO	Defective Wash Timer	Replace Wash Timer	
YES	YES	Defective Wash Motor	Replace Wash Motor	
Pulsator does not rotate smoothly.	Is the Wash Load appropriate?	NO	The wash load is more than 8.0kg (160C) or 10.0kg (170C)	Reload with proper wash load.
	YES ↓			
	Are the Pulsator and Motor Pulleys securely assembled?	NO	Defect of mechanical assembly	Tighten the screws fixed on the Pulleys.
	YES ↓			
	Does the V-Belt slip?	YES	Worn out V-Belt	Replace V-Belt
YES ↓				
Are there impurities between the Pulsator.	YES	Revolution obstructed by impurities	Remove impurities after disassembling pulsator.	
NO ↓				

PROBLEM	CHECK POINT	CAUSE	SOLUTION
Pulsator does not rotate smoothly.	Does the Gear Housing Shaft rotate properly when the Pulsator has been disassembled?	YES Worn out the Serration within the Pulsator.	Replace Pulsator.
	NO	Defective Gear Housing	Replace Gear Housing As.
Pulsator. only rotates in one direction.	Is the wiring of Wash condenser properly connected?	NO Improper Connection	Reconnect
	YES		
	Is the wiring of Wash Timer properly connected?	NO Improperly Wiring	Reconnect the Wash Timer.
	YES	Defective Wash timer	Replace Wash Timer.
There is excessive noise during Washing	Are there strange noise from Tub when the Pulsator rotate?	YES Impurites between Pulsator and tub	Remove impurities after dis-assembling Pulsator.
	NO		
		NO Pulsator improperly assembled.	Tighten the Pulsator fixing screw.
		Something is in contact with the Pulsator Pulley or Motor Pulley or other rotating parts.	Adjust the parts so that there are no impurities in contact with rotating parts

Concerning Spin

PROBLEM	CHECK POINT	CAUSE	SOLUTION
The Basket Spin does not rotate.	Is the Door Spin open?	YES The contact Door Switch is open.	Keep the Door Spin closed during spin.
	NO		
	Is there a whirring sound from the Spin Motor when turned ON?	NO	
	YES		

PROBLEM	CHECK POINT	CAUSE	SOLUTION	
The Basket Spin does not rotate.	The Brake Band is touching the Drum Coupling Assembly.	YES Brake wire is too long.	Assemble after loosening LINK BRAKE and adjusting downward.	
		NO BRAKE SPRING is broken.	Replace Brake Spring.	
	Is the Motor hot? (In case there is Thermal Protector)	YES Power has been cut off by the Thermal Protector	Power restored when motor cools.	
		NO Is the wiring good? (Refer to Wiring Diagram)	Reconnect wiring	
		NO Is the Door Switch Lever properly placed on the Door Spin?	Replace Door Switch or reshape the Lever.	
		YES Is the Door Switch terminal properly connected?	Reconnect the terminal.	
		NO Is the Contact of Spin Timer good?	Replace the Spin Timer.	
		YES Defective Spin Motor	Replace the Spin Motor.	
	There are strange noise and severe vibration during spinning.	Is the wash load well balanced?	NO Basket Spin does not balanced due to wash load.	Reload the clothes so they are well balanced
			YES Are clothes or the Safety Cover stick out from Basket Spin?	Reload the clothes and press down the Safety Cover into Basket Spin.
		YES Is the assembly between the Drum Coupling Assembly and Spin Motor or Basket Spin loose?	Tighten the Bolt Drum Coupling Assembly.	
		NO Is the Basket Spin itself well balanced?	Replace Basket Spin.	
		YES The Waterseal or the oil-less metal in the Bellows Assembly worn out.	Replace Bellows Assembly.	

PROBLEM	CHECK POINT	CAUSE	SOLUTION
There is leakage during spinning.	Is the Bellows Assembly properly assembled?	NO Waterproofing not working due to defective assembly.	Re-assemble Bellows Assembly.
	YES	The Waterseal or the Oilless Metal in the Bellows Assembly is worn out.	Replace Bellows Assembly.
Basket Spin does not stop with the Door Spin open	The Brake Band touches the Drum Coupling when the Door Spin open.	NO Brake wire is too short.	Replace after loosening LINK BRAKE and adjusting upward.
	YES	Brake Band is worn out.	Replace Brake Band or Brake Fix Assembly.
	Is the electric connection of the Door Switch good?	NO Defective Door Switch	Replace Door Switch
	YES	The contact of the Door Switch does not open due to deformity of the lever of Door Switch.	Replace Door Switch or reshape the lever of Door Switch.

Concerning Drainage (Pump)

PROBLEM	CHECK POINT	CAUSE	SOLUTION	
Drainage is not satisfactory	Is the height of the drainage area where the Drain Hose hangs over 1m?	YES The Drain Hose is too high.	Hang the Drain Hose lower.	
	NO	Are there impurities on the Drain Strainer?	YES Impurities are obstructing drainage.	Remove out impurities on the drain Strainer
	NO	Are there impurities in the Valve Housing or Inlet Joint?	YES Impurities are obstructing drainage.	Remove impurities or replace Valve Housing or Inlet Joint.
	NO	Impurities are blocking the Drain Hose	Remove impurities	

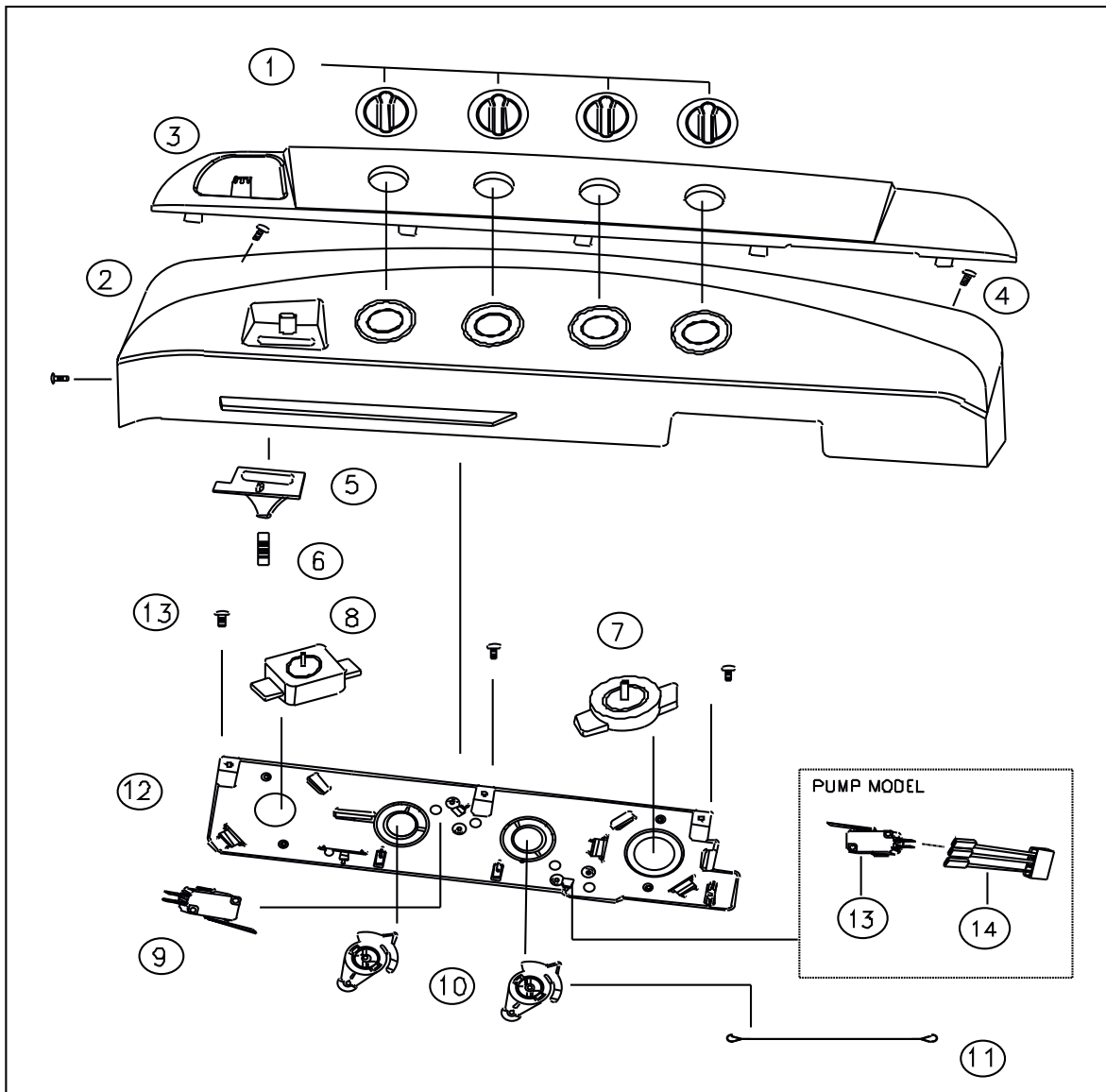
PROBLEM	CHECK POINT	CAUSE	SOLUTION
Draining does not function during drain selecting	Is the Drain Selector in the DRAIN position	YES The position is fault.	Turn the Drain Selector to DRAIN.
	NO ↓		
	Is the pump Motor wiring properly connected?	NO Defective wiring	Reconnect wiring
	YES	Defective Pump motor	Replace Pump Motor
Drain does not function during Spinning.	Are the wiring of the Spin Timer and the Pump Motor good?	NO Defective wiring	Reconnect wiring
	Is the Spin Timer's contact good?	NO Defective Spin Timer	Replace Spin Timer
	YES	Defective Pump motor	Replace Pump Motor

Concerning Drainage (Non Pump)

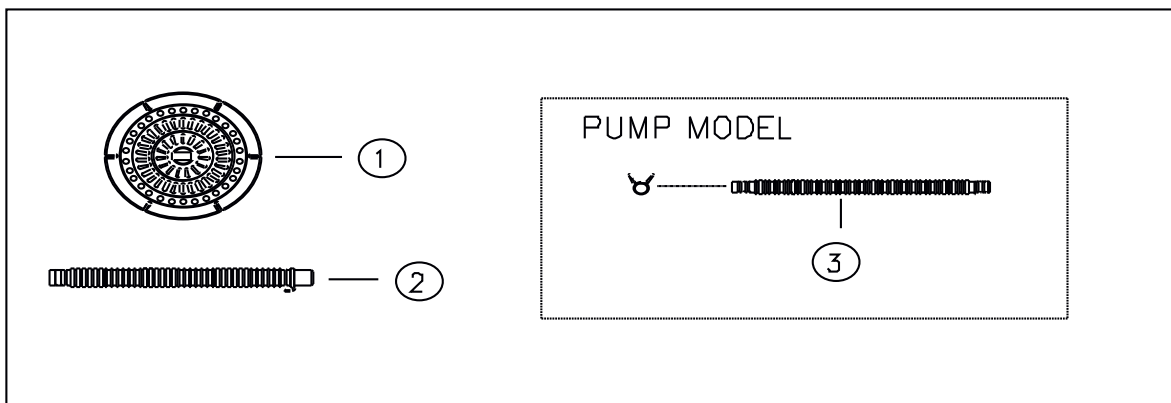
PROBLEM	CHECK POINT	CAUSE	SOLUTION
Drainage is not satisfactory.	Are there impurities on the Drain Strainer?	YES Impurities are obstructing drainage.	Remove impurities on the Drain Strainer
	NO ↓		
	Are there impurities in the Valve Housing or Inlet Joint?	YES Impurities are obstructing drainage.	Remove impurities or replace Valve Housing or Inlet Joint
	NO	Impurities are blocking the Drain Hose	Remove impurities
Water keeps draining during wash	Is the Drain Selector on the operation Panel at the DRAIN position?	YES Mismanupilation	Turn Drain Selector to WASH/RINSE position
	NO	There are impurities between the Valve Housing and Valve Bellows.	Remove impurities and replace Valve Housing.

6. EXPLODE VIEW AND P ARTS LIST

ASS'Y PANEL BACK



ACCESSORY ASS'Y



✓ **Caution:** In this Service Manual, some parts can be changed for improving, their performance without notice in the parts list. So, if you need the latest parts information, please refer to PPL(Parts Price List) in Service information Center(<http://svc.dwe.co.kr>)

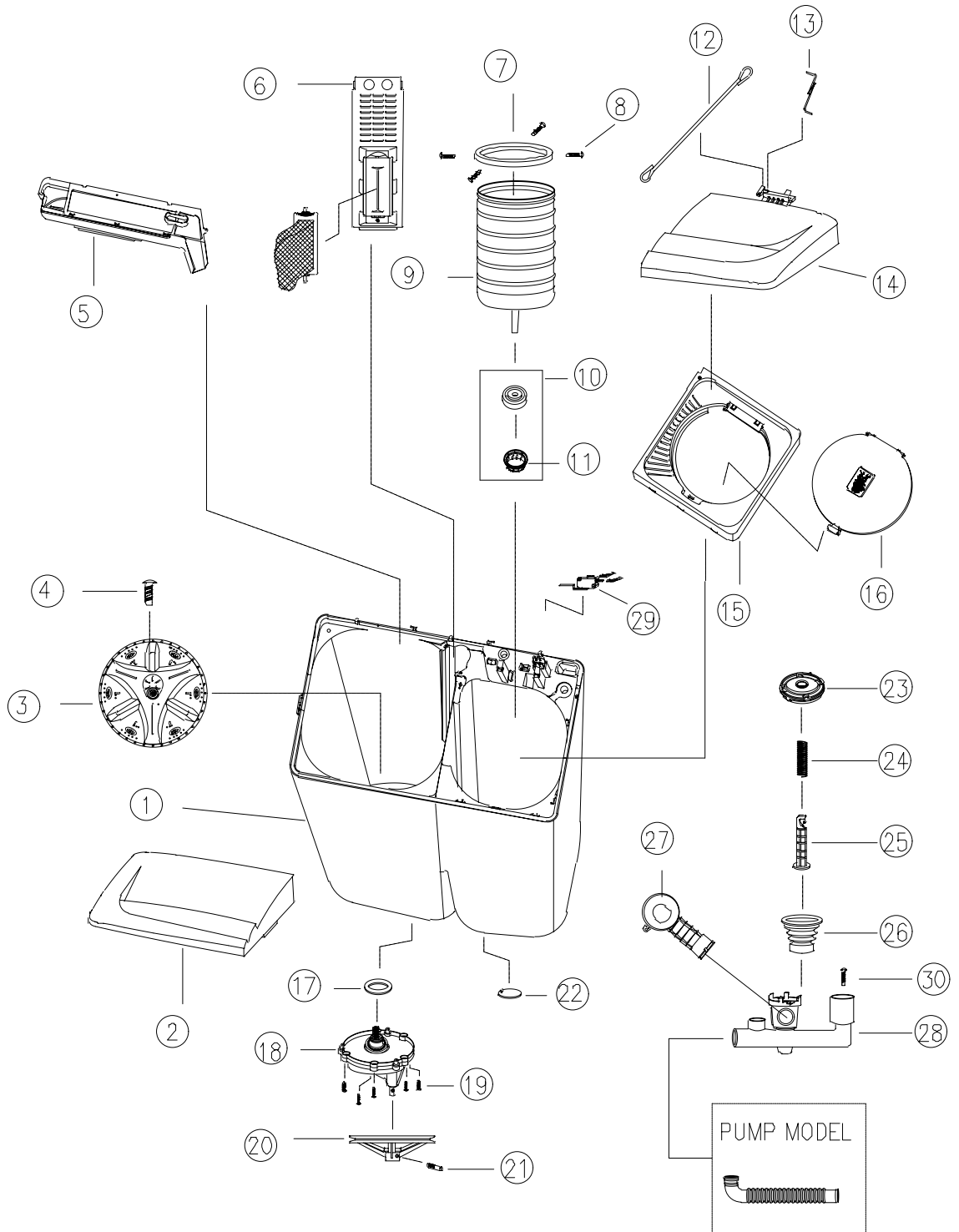
PANNEL ASS'Y

NO.	PART NAME	PART CODE	DESCRIPTION	QTT'Y	REMARKS
1	KNOB	3613403800	DWM-160C, ABS	4.0	
		3613404000	ABS	4.0	161C/162C/171C/172C
2	PANEL B	3614239000	HIPS	1.0	160C/170C
		3614274300	HIPS	1.0	161C/162C/171C/172C
3	DECORATOR PANEL	3611621800	ABS	1.0	161C/171C
		3611621810	ABS	1.0	162C/172C
4	SCREW TAPPING	7122401411	T2S TRS 4X14 MFZN	3.0	
5	LEVER W.S SELECT	3613702300	PP	1.0	
6	HOSE SPRAY	3613201201	PE-LD	1.0	
7	TIMER SPIN	3619911200	S-160CA	1.0	
8	TIMER WASH	3619911100	S-DT15NT	1.0	OPTION
		3619911300	S-K16NT	1.0	OPTION
9	SWITCH DRAIN	3619043700	VP531A-2H,250VAC/15A	1.0	
10	LEVER CONTROL	3613701400	POM	2.0	
11	LINK VALVE	3617804200	PP BAND W6 L=784	1.0	
12	BRACKET PANEL	3610606200	PP	1.0	
13	SCREW TAPPING	7122401411	T2S TRS 4X14 MFZN	3.0	
14	SWITCH DRAIN	3619045300	VO, SZM-V15-18FA-91	1.0	PUMP MODEL
15	HARNESS DRAIN	3612790600	160CP SW DRAIN L=1100	1.0	PUMP MODEL

ACCESSORY ASS'Y

NO.	PART NAME	PART CODE	DESCRIPTION	QTT'Y	REMARKS
1	COVER SAFETY	3611419900	LDPE(DIA:286)	1.0	
2	HOSE DRAIN O AS	3613224310	820MM, HANGER, NON CLAMP	1.0	NON PUMP
3	HOSE DRAIN O AS	3613218800	LD-PE/EVA L=1600 PUMP	1.0	PUMP MODEL

Ass'y Tub

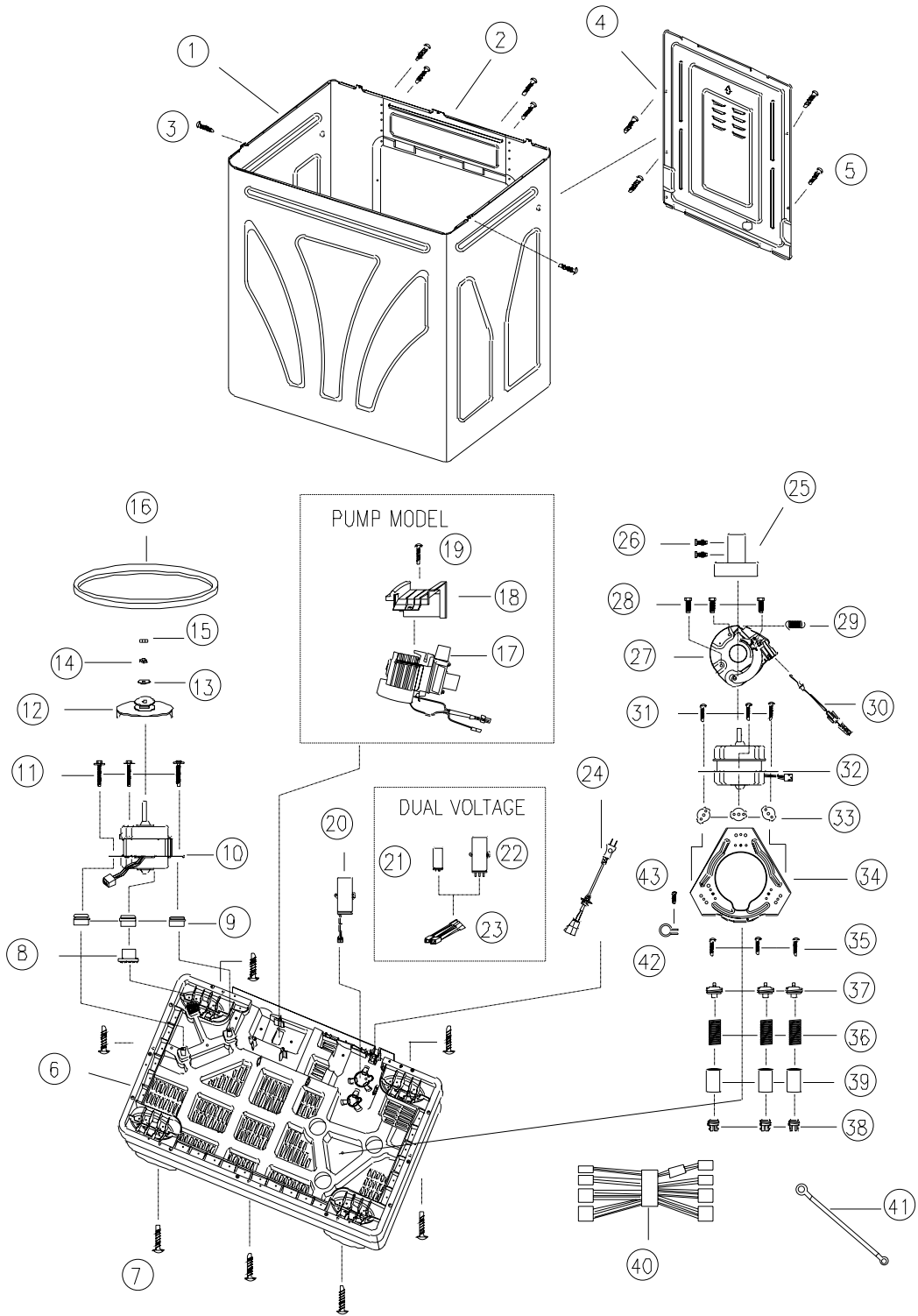


✓ **Caution:** In this Service Manual, some parts can be changed for improving, their performance without notice in the parts list. So, if you need the latest parts information, please refer to PPL(Parts Price List) in Service information Center(<http://svc.dwe.co.kr>)

ass'y tub

NO.	PART NAME	PART CORD	SPECIFICATION	Q'TY	REMARKS
1	TUB	3618819000	PP	1.0	
2	DOOR WASH	3611799600	HIPS	1.0	
3	PULSATOR AS	3619706800	DWM-160C	1.0	
4	SPECIAL SCREW	3616002901	SUS 304(NON SLOCK)	1.0	
5	BASE WATER SUPPLY	3610390900	PP	1.0	
6	FILTER OVERFLOW AS	3611903800	WITH FILTER AS	2.0	
7	BALANCER AS	3616105800	DWM-160C	1.0	
8	SCREW TAPPING	7122401211	T2S TRS 4*12 MFZN	4.0	
9	BASKET SPIN	3619103600	PP(J-360A)	1.0	
10	BELLOWS	3616402000	NBR	1.0	
11	FIXTURE BELLOWS	3612005800	PP	1.0	
12	LINK BRAKE	3617804300	PP BAND W6 L=564	1.0	
13	SPRING COVER	3615108810	HSW3	1.0	
14	DOOR SPIN	3611799500	HIPS	1.0	
15	PLATE T	3614525200	PP	1.0	
16	COVER INNER	3611419700	PP	1.0	
17	RING O	4506H05050	CR	1.0	
18	GEAR HOUSING ASS'Y	3617306201	3.3:1	1.0	DWM-160C
		3617309100	6:1	1.0	DWM-170C
19	SCREW TAPPING	7122502011	T2S TRS 5X20 MFZN	5.0	
20	PULLEY PULSATOR	3618432500	FRPP	1.0	DWM-160C
		3618432600	FRPP	1.0	DWM-170C
21	SPECIAL BOLT	3616008400	M6 SIDE-FIXING	1.0	
22	PROTECTOR F.B	3618303500	NBR	1.0	
23	VALVE CAP	4505F06013	PE-HD	1.0	
24	SPRING VALVE	4505C06022	SWC WR 1.0D	1.0	
25	ROD VALVE	3618504000	PP	1.0	
26	BELLOWS VALVE	4505C06041	NBR	1.0	
27	INLET JOINT	3617504100	PP	1.0	
28	CASE VALVE	3611131600	PP	1.0	
29	COVER S/W AS	4507K44031	15A 220VAC 1006FD	1.0	
30	SCREW TAPPING	7122502011	T2S TRS 4X14 MFZN	1.0	

Ass'y Main



✓ **Caution:** In this Service Manual, some parts can be changed for improving, their performance without notice in the parts list. So, if you need the latest parts information, please refer to PPL(Parts Price List) in Service information Center(<http://svc.dwe.co.kr>)

ass'y main

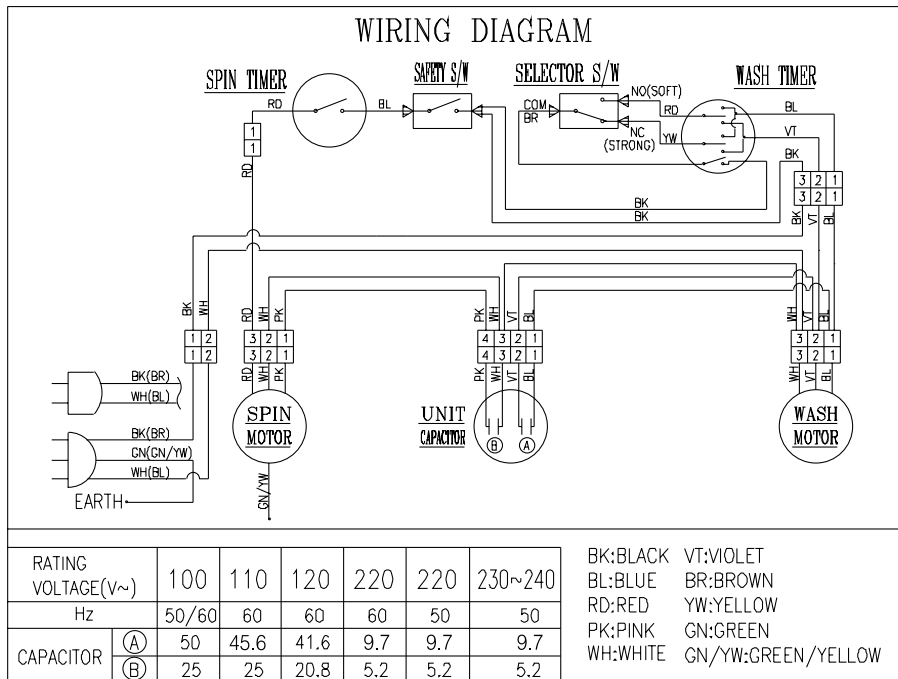
NO.	PART NAME	PART CORD	SPECIFICATION	Q'TY	REMARKS
1	ASSY CABINET	PRCACA6200	DWM-160C 0.6T	1.0	
2	PLATE UPPER	3614525100	SGCC 0.6T	1.0	
3	SCREW TAPPING	7122401011	T2S TRS 4*10 MFZN	4.0	
4	COVER BACK	3611419800	SECC 0.4T	1.0	
5	SCREW TAPPING	7112400811	T1 TRS 4*8 MFZN	4.0	
6	BASE UNDER	3610390800	PP	1.0	
7	SCREW TAPPING	7122401011	T2S TRS 4*10 MFZN	7.0	
8	CUSHION SPOT	450M712010	PP	1.0	
9	CUSHION MOTOR	450M712020	NR	3.0	
10	MOTOR WASH	3618961900	220~240V/50HZ,W1S35VD060	1.0	N(P), M(P)
		3618961600	110V/60HZ,W1S35ED060	1.0	T(P)
		3618961800	220V/60HZ,W1S35UD060	1.0	L
		3618962000	W1S35GD060	1.0	D,S
11	SPECIAL SCREW	3616003100	M5X35 WASHER	3.0	
12	PULLEY MOTOR AS	3618431700	PRESS(SGCC1.2T,D31),2.1MM	1.0	50HZ
	PULLEY MOTOR AS	3618431600	PRESS(SGCC1.2T,D24),4.3MM	1.0	60HZ
13	WASHER PLAIN	7400108411	PW-1-8.4 MFZN	1.0	
14	WASHER SPRING	7401008011	SW-8 MFZN	1.0	
15	NUT HEX	7392800011	M8*P1.25 MFZN	1.0	
16	BELT V	450M700020	M-32	1.0	DWM-160C
		3616590700	M-24	1.0	DWM-170C
17	UNIT DRAIN PUMP AS	3618964800	AC 220~240V, 50HZ,PLASET	1.0	NP, MP
		3618964900	AC 110V, 60HZ,PLASET	1.0	TP
18	FIXTURE PUMP	3612005700	PP	1.0	
19	SCREW TAPPING	7112402011	T1 TRS 4X20 MFZN	1.0	
20	UNIT CAPACITOR	3618948200	9.7/5.2 400/440 CON-4P	1.0	L,N(P),M(P)
		3618948600	45.6/25 200/200 CON-4P	1.0	T(P)
21	CAPACITOR WASH	4505E11000	25+25UF	1.0	D, DUAL
		4509C11020	200V 20.8UF*2	1.0	S, DUAL
22	CAPACITOR SPIN	4509C11010	MF CAPACITOR 200V 20.8MF	1.0	D,S,DUAL
23	HARNESS CONDENSER	3612706710	CONN A,B	1.0	DUAL
24	CORD POWER AS	3611332100	T VACTFK 2*0.75 2.3M GY	1.0	
		3611331700	A VACTFK 2*0.75 2.3M GY	1.0	
		3611331310	VCTF 3*0.75 2.3M GY	1.0	
		3611331630	H05VV-F 3*0.75 WH	1.0	
		3611331650	H05VV-F 3*0.75 BK	1.0	
		3611331110	VCTF 3*0.75 2.3M GY	1.0	
		3611331810	H05VV-F 3*0.75 2.3M BK	1.0	
		3611332100	VCTFK 2*0.75 2.3M GY	1.0	
		3611331930	C SJT 3*18AWG 2.3M GY	1.0	
		3611331700	A VCTFK 2*0.75 2.3M GY	1.0	
		3611331700	FH05VV 3*0.75 2.3M BK	1.0	
25	COUPLING DRUM AS	3617002100	DWM-160C	1.0	
26	SPECIAL BOLT AS	3616008000	6B-1-M8X12	2.0	

✓ **Caution:** In this Service Manual, some parts can be changed for improving, their performance without notice in the parts list. So, if you need the latest parts information, please refer to PPL(Parts Price List) in Service information Center(<http://svc.dwe.co.kr>)

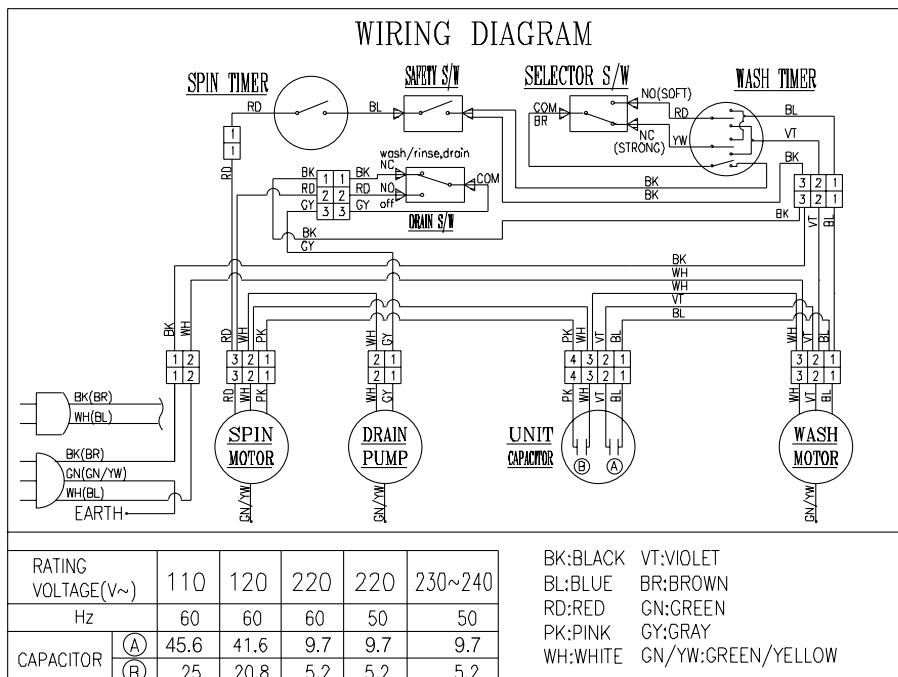
NO.	PART NAME	PART CORD	SPECIFICATION	Q'TY	REMARKS
27	BRAKE FIX PLT AS	4505C54000	2-WAY	1.0	
28	BOLT HEX	7341500811	6B-1-5X8 MFZN	3.0	
29	SPRING BRAKE	4507K53010	SWC D1.0 ZN8-C	1.0	
30	ASS'Y BRAKE WIRE	3619201702	SUS WIRE+PE L260	1.0	
31	BOLT HEX	7341501611	6B-1-5X16 HS MFZN	3.0	
32	UNIT SPIN MOTOR	3618949601	110V 60HZ W1D35EF001	1.0	T(P)
		3618949201	220V 60HZ W1D35UF001	1.0	L
		3618949401	220-240V 50HZ W1D35VF001	1.0	N(P), M(P)
		3618950101	W1D35FF002 110/220V 50HZ	1.0	D, DUAL
		3618950001	W1D35LF002 120/240V 60HZ	1.0	S, DUAL
33	CUSHION MOTOR SPIN	3611556300	PP	3.0	
34	BRACKET MOTOR SPIN	3610606100	SPG 1.6T	1.0	
35	SCREW TAPPING	7122502511	T2 TRS 5X25 MFZN	3.0	
36	SPRING CUSHION	3615112700	SWC D=3.2	1.0	
37	STOPPER	4506H14020	PE - HD	1.0	
38	STOPPER LOWER	3615200800	PP	1.0	
39	RUBBER DAMPING	4506H14030	NBR	1.0	
40	HARNESS ASS'Y	3612757300	7510	1.0	PUMP MODEL
		3612757220	800C	1.0	N,M,T,L
		3612756301	7510	1.0	D,S
41	HARNESS EARTH	3612757810	UL1015 AWG18 490	1.0	
42	CABLE CLAMP	3611202610	NYLON66 DA-5N	1.0	
43	TAPTITE SCREW	7272400811	TT3 TRS 4*8 MFZN	1.0	

7. WIRING DIAGRAM

Singl e Vol tage/Normal

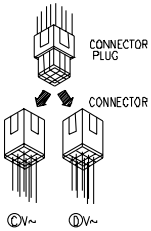


Singl e Vol tage/Pump



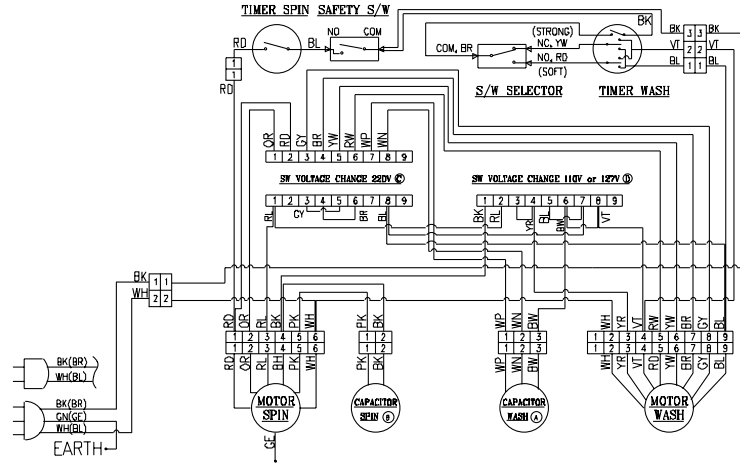
Dual Voltage/Normal

CAUTION



OPTIMUM USE WITH YOUR VOLTAGE. THIS UNIT IS SET FOR IF YOU WANT TO CHANGE VOLTAGE THE 220V ~ CONNECTOR PLUG AS THE FIG.

WIRING DIAGRAM



RATING VOLTAGE(V~)	110/220	127/220	GN : GREEN	RD : RED	GE : GREEN/YELLOW	BH : BROWN/WHITE
CAPACITOR	Ⓐ	25x2	OR : ORANGE	PK : PINK	BW : BLUE/WHITE	
	Ⓑ	20.8	BK : BLACK	VT : VIOLET	RL : RED/BLUE	
CONNECTOR	Ⓒ	220	BR : BROWN	GY : GRAY	YR : YELLOW/RED	
	Ⓓ	110~130	WH : WHITE	YW : YELLOW	WP : WHITE/PURPLE	
			BL : BLUE	RW : RED/WHITE	WN : WHITE/GREEN	

DAEWOO

DAEWOO ELECTRONICS CO., LTD.

686, AHYEON-DONG MAPO-GU SEOUL, KOREA

C.P.O. BOX 8003 SEOUL, KOREA

TELEX: DWELEC K28177-8

CABLE: "DAEWOOELEC"

FAX: 82-2-360-7877

TEL: 82-2-360-7114

<http://www.dwe.co.kr>

PRINTED DATE: SEP.2001

S/M NO. : DWM161C011