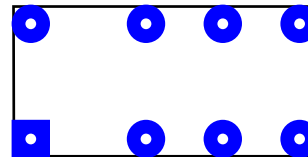


DS2E-S-DC12*Author:* Anonymous*Source:* NAIS*Description:* DIP-size relay*Size:* 800 x 400 mil

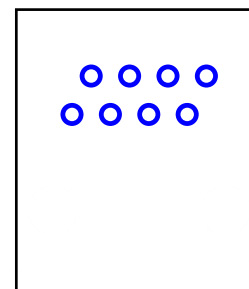
PIN(s)	PAD			
	TYPE	SHAPE	SIZE	HOLE
1	TH	Square	100 mil	28 mil
4	TH	Round	100 mil	28 mil
6	TH	Round	100 mil	28 mil
8-9	TH	Round	100 mil	28 mil
11	TH	Round	100 mil	28 mil
13	TH	Round	100 mil	28 mil
16	TH	Round	100 mil	28 mil

Scale 2:1

**RJ458n4***Author:* Anonymous*Source:* Corcom*Description:* shielded RJ45*Size:* 716 x 740 mil

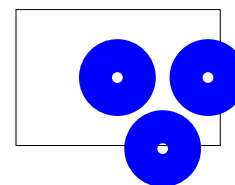
PIN(s)	PAD			
	TYPE	SHAPE	SIZE	HOLE
1-8	TH	Round	60 mil	35 mil
9-10	TH	Round	128 mil	128 mil
11-12	TH	Round	76 mil	76 mil

Scale 2:1

**PJ102A***Author:* Anonymous*Source:* CUI*Description:* DC power jack*Size:* 600 x 462 mil

PIN(s)	PAD			
	TYPE	SHAPE	SIZE	HOLE
1-3	TH	Round	200 mil	28 mil

Scale 2:1

**2342rly***Author:* Anonymous*Source:* Coto 2300 series*Description:* reed relay*Size:* 800 x 200 mil

PIN(s)	PAD			
	TYPE	SHAPE	SIZE	HOLE
1	TH	Square	50 mil	28 mil
2-8	TH	Round	50 mil	28 mil

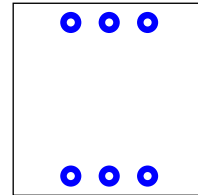
Scale 2:1



t3220A*Author:* Anonymous*Source:* ttc-168*Description:* 600-600 transformer*Size:* 1000 x 1000 mil

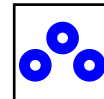
PIN(s)	PAD			
	TYPE	SHAPE	SIZE	HOLE
1-6	TH	Round	110 mil	42 mil

Scale 1:1

**pot3329***Author:* Anonymous*Source:* Bourns 3329H*Description:* 1/4' round trimpot*Size:* 250 x 250 mil

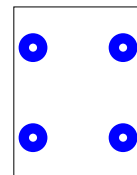
PIN(s)	PAD			
	TYPE	SHAPE	SIZE	HOLE
1-3	TH	Round	85 mil	28 mil

Scale 2:1

**ty-307P***Author:* Anonymous*Source:* Magnetek*Description:* 600-600 transformer*Size:* 681 x 881 mil

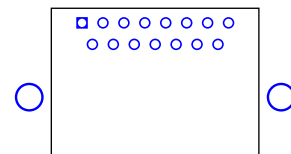
PIN(s)	PAD			
	TYPE	SHAPE	SIZE	HOLE
1-4	TH	Round	150 mil	42 mil

Scale 1:1

**DB15M-90-2***Size:* 1462 x 778 mil

PIN(s)	PAD			
	TYPE	SHAPE	SIZE	HOLE
1	TH	Square	60 mil	43 mil
2-15	TH	Round	60 mil	43 mil
16-17	TH	Round	150 mil	125 mil

Scale 1:1

**DB15F-90-2***Size:* 1462 x 778 mil

PIN(s)	PAD			
	TYPE	SHAPE	SIZE	HOLE
1	TH	Square	60 mil	43 mil
2-15	TH	Round	60 mil	43 mil
16-17	TH	Round	150 mil	125 mil

Scale 1:1

