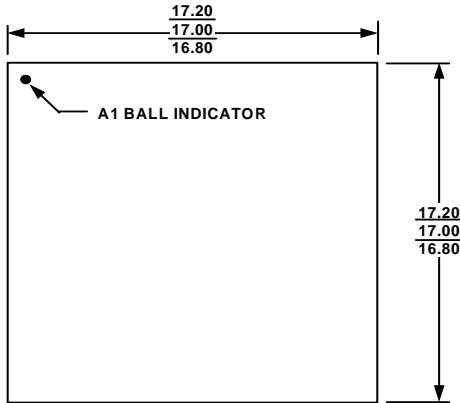


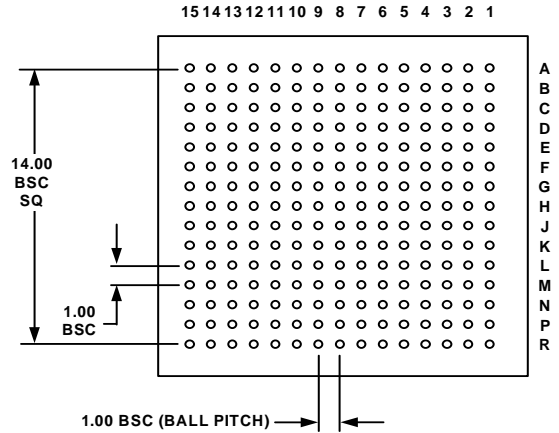
## OUTLINE DIMENSIONS

The ADSP-21161N comes in a 17mm × 17mm, 225 ball MBGA package with 15 rows of balls. All dimensions in the figure below are in millimeters (mm).

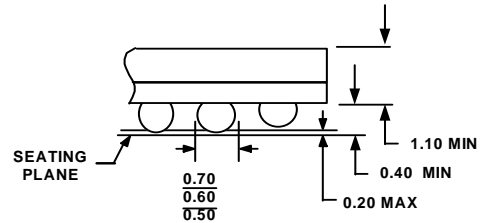
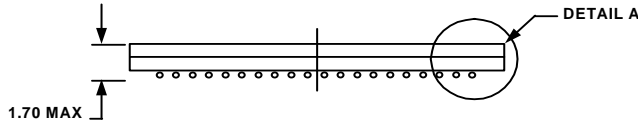
### 225-Ball Mini-BGA (CA-225)



(TOP VIEW)



(BOTTOM VIEW)



(BALL DIAMETER)

DETAIL A

**NOTES:**

1. DIMENSIONS ARE IN MILLIMETERS AND COMPLY WITH JEDEC STANDARD MO-151.
2. ACTUAL POSITION OF THE BALL GRID IS WITHIN 0.25 OF ITS IDEAL POSITION RELATIVE TO THE PACKAGE EDGES.
3. ACTUAL POSITION OF EACH BALL IS WITHIN 0.10 OF ITS IDEAL POSITION RELATIVE TO THE BALL GRID.