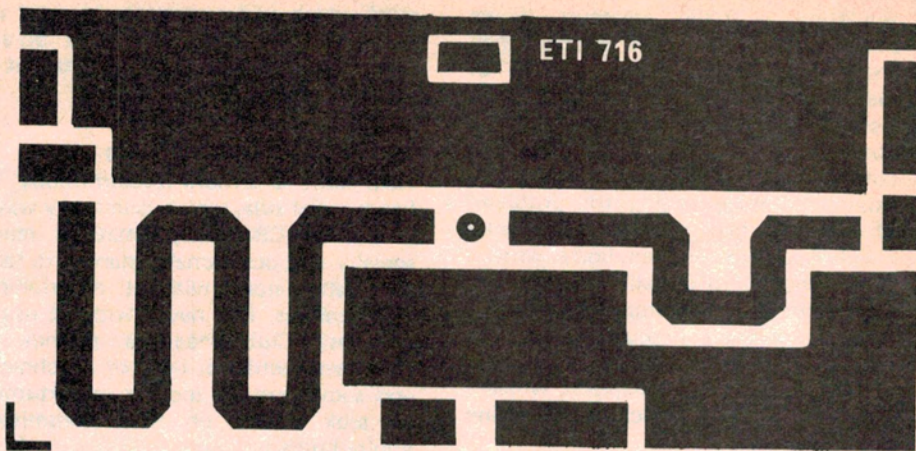
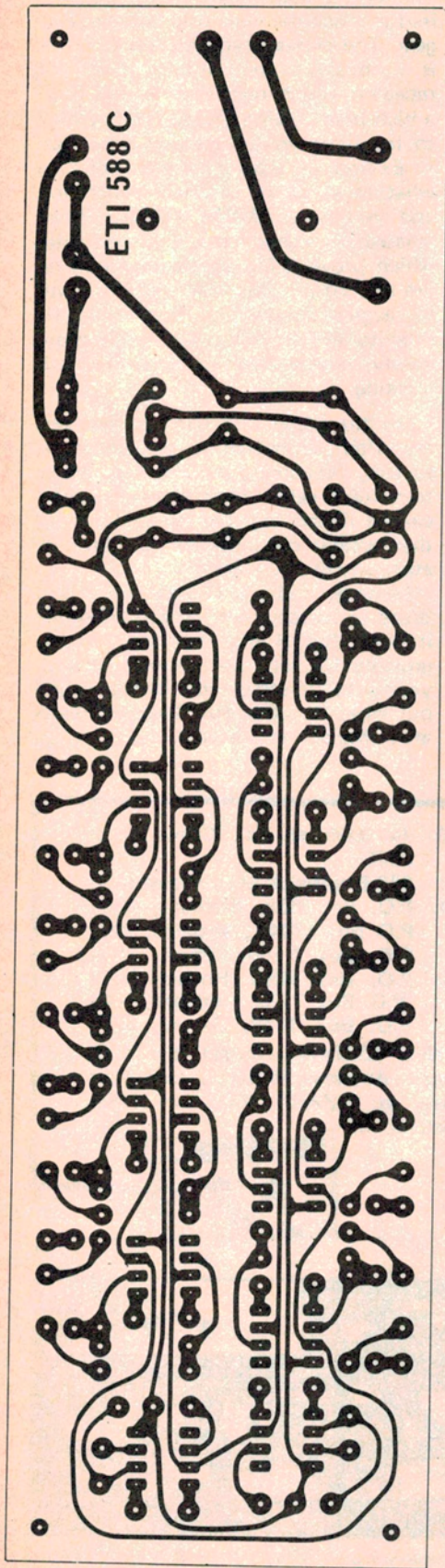
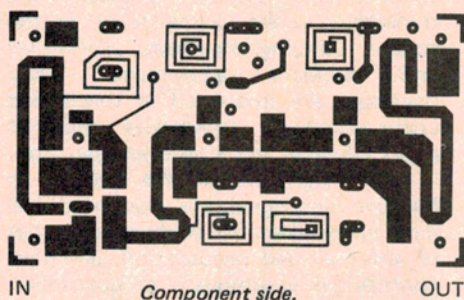


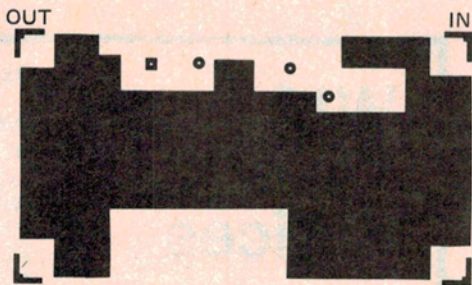
# PCB's



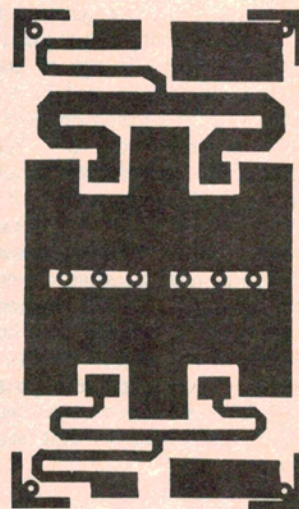
*ETI 716 45 W stripline 2 m power amplifier pc board, component side. This is a double-sided board, other side is complete ground-plane.*



*40 W, three stage broadband stripline VHF power amplifier pc board. 50% actual size.*



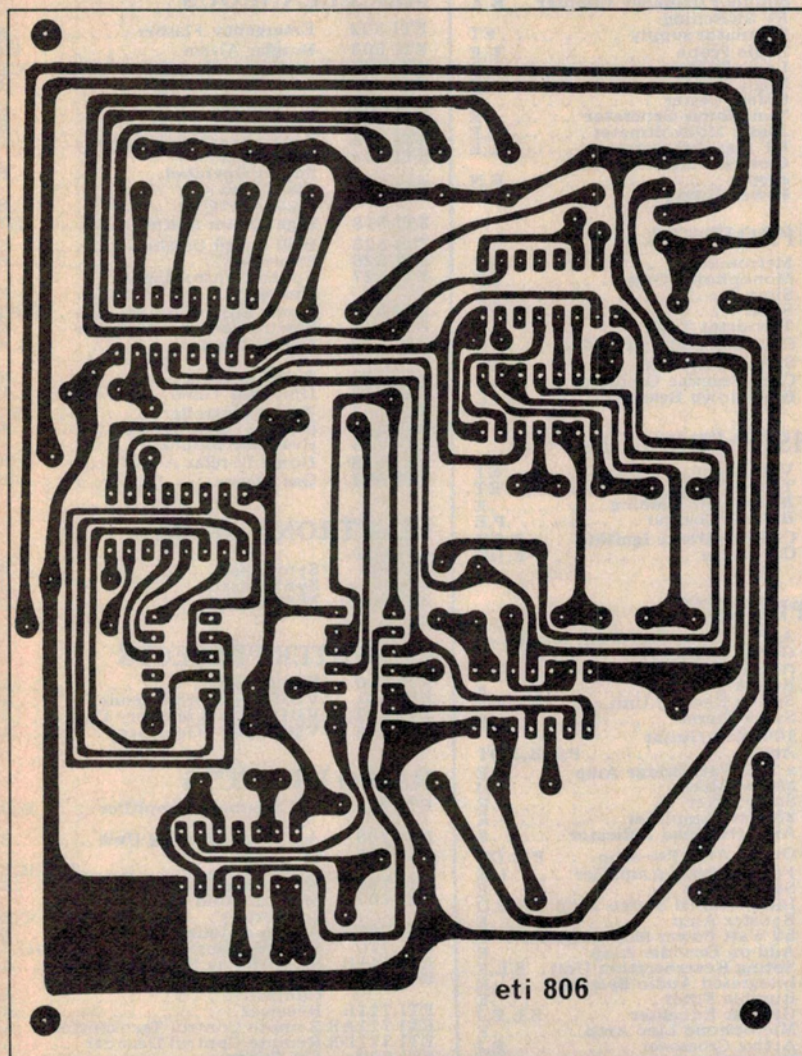
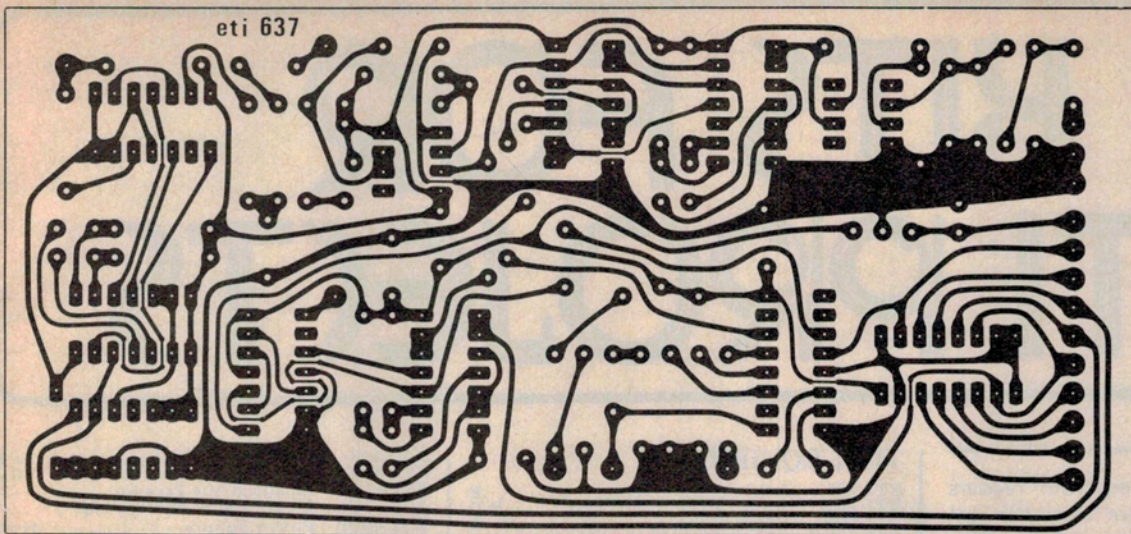
*Groundplane side.*



*140 W stripline broadband VHF power amplifier pc board. This is double-sided board, component side. Other side is complete groundplane. 50% actual size.*

The reverse of these pages is printed in blue so that the page can be used to directly make Scotchcal negatives and hence (using photo-sensitive resist) finished printed circuit boards. The method of doing this was described in the December 1977 issue of ETI. Back issues are available — see the information on the Reader Services page.





#### ETI/Unitrex Calculator Contest

The November problem really drew the crowds, we reckon it must have been too easy! The correct answer to the problem of the oranges is seven (7). It's obvious, now that you think about it! Our winner, M. Stuart of Traralgon, Vic. receives a Unitrex calculator.

This month's problem stems from an incident which took place in deepest, darkest Papua New Guinea many years ago, and was prompted by a suggestion from Mr. C. Carpenter of Girrawheen in South Australia.

ETI's communication/propagation expert, researching ground wave propagation in humid jungle, was captured by a horde of hostile natives. Imprisoned in a hut with two doors, our man in PNG was told that he could leave by either door, but that only one led to freedom — the other led to a gently simmering stewpot.

His two guards, one at each door, were chosen by the native chief (who was obviously a betting man) because of their unique personal traits. One was a fantastic liar, who never spoke a true word, and the other was as honest as the day he was born. Our man was allowed to ask one direct question of either guard to help him decide. Needless to say, our hero escaped — what question did he ask?

Seal an empty envelope, write your answer on the back of it with your name and address, and send it to: Unitrex Calculator Contest (January), ETI Magazine, 15 Boundary St., Rushcutters Bay, NSW 2011. The closing date is the 18th of February.