

Dressed-up project has been lettered with decals cut from sheets shown at bottom of page. Decals come in collections of most common words and symbols for a particular area such as audio, amateur, test equipment.

Give Your Home-Brews That PROFESSIONAL LOOK

Now your projects can have the polished appearance of commercially manufactured equipment. By taking our short course in customizing, you'll find that it's easy, inexpensive and doesn't take much time.

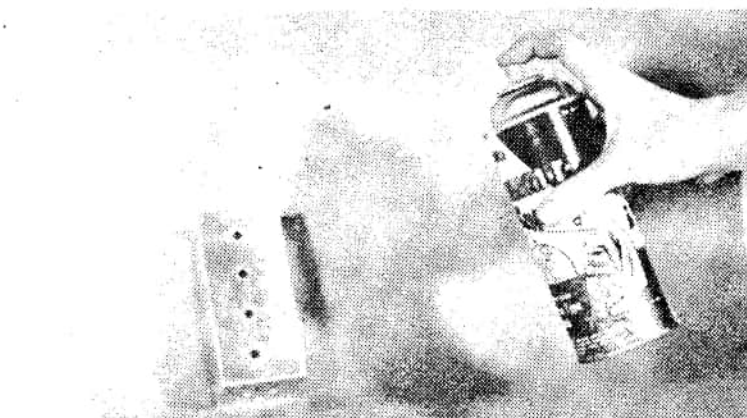
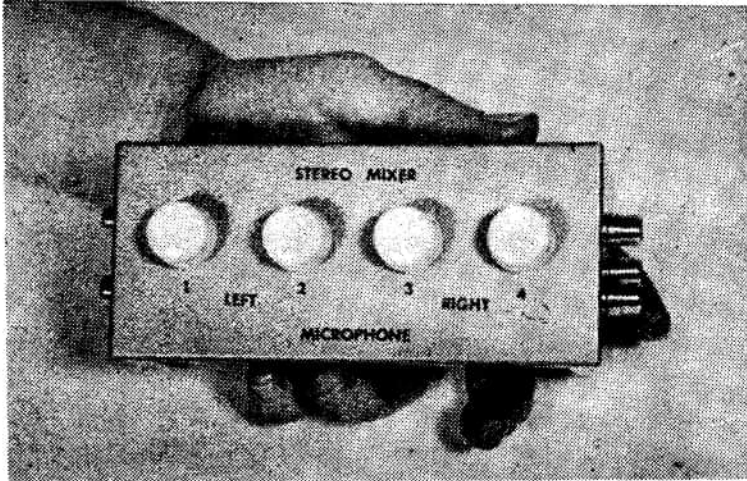
By Russ Cogan

Spray paints are good for finishing unpainted aluminum and bakelite cabinets. First drill holes for shafts, pilot light, etc., then scrub and rinse thoroughly. Get surface absolutely dry. Next, build up paint with two or three coats rather than one heavy coat. The thinner the layers, the better will be the appearance.

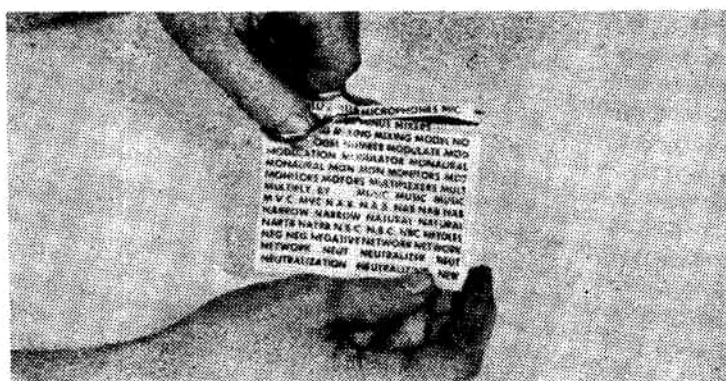
Supplies are available from these sources:

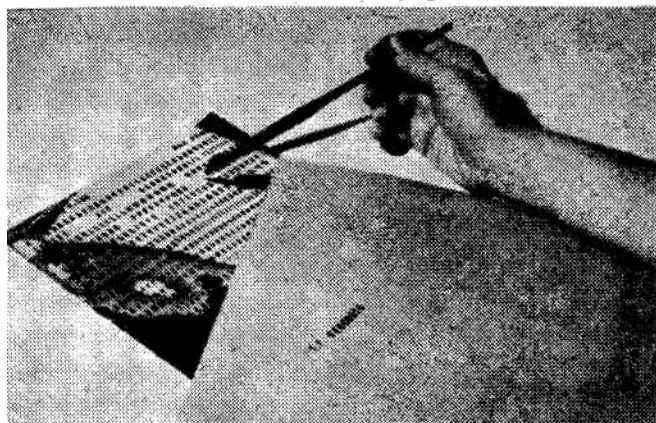
Spray paint—Art-supply dealer or paint store
Hammer tone spray paint—Allied, Newark, or
Lafayette Radio Corp. or G-C Electronics
Co., 400 S. Wyman, Rockford, Illinois
Decals—Under the G-C and Walsco labels from
radio-parts distributors.
Planotype—The Planoscope Corp., 551 Fifth
Avenue, New York 17, N.Y.
Transfer type—Letraset and Cello-Tak. From
radio-parts distributors, art-supply dealers,
or Arthur Brown Co., 2 West 46th Street,
New York, N.Y.

Cut the desired word or letters from the decal sheet and soak in warm water for about 30 seconds. Using tweezers, transfer the decal to the cabinet from the backing paper. You'll find this safer than holding the decal alone. Blot the excess water. Allow the decals to dry 24 hours or they'll rub off when handled.



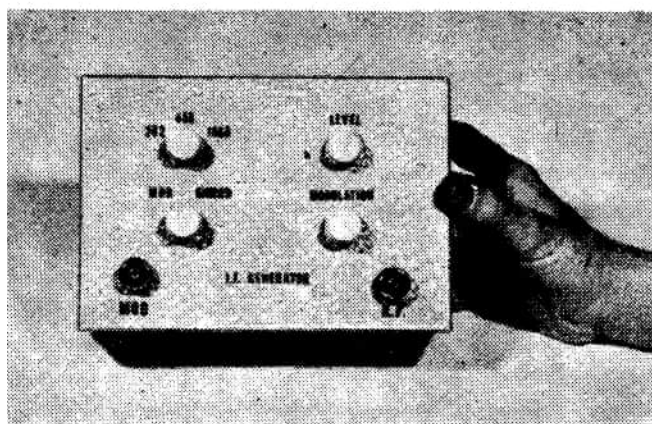
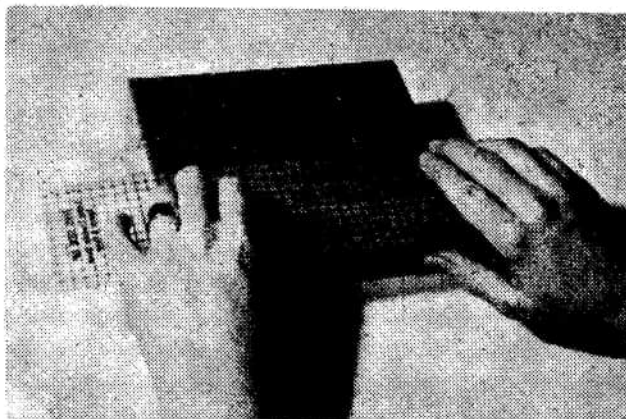
Lettering can be added in several ways, depending on the desired size, color and resistance to abrasion. Decals are available in black, white and gold and in several sizes (1/8 inch up). This is perfect for small cabinets. To provide protection from handling, give lettering a coat of Krylon spray or clear nail polish and let dry completely.





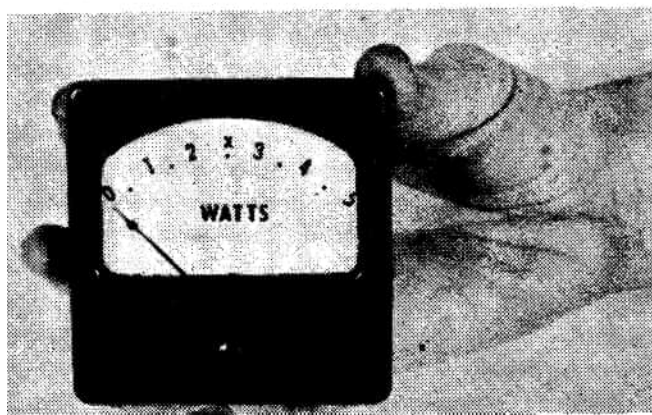
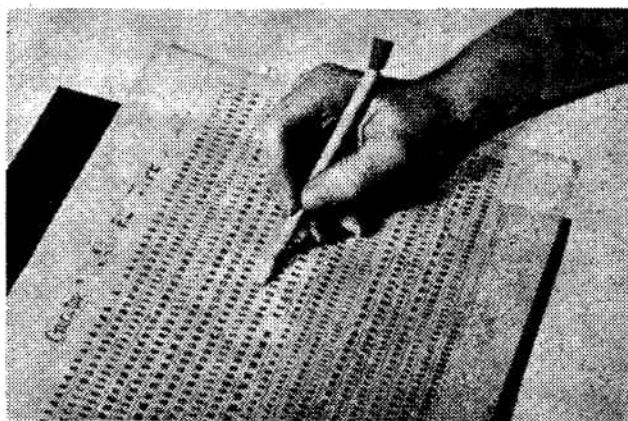
Planotype adhesive plastic letters are available in many colors and sizes. They are abrasion-resistant and recommended for front-panel use. Using a sharp-pointed instrument, lift the letters off the aluminum backing sheet and arrange them in word groups on the layout sheet. Complete word groups are lifted with transfer sheet.

After the transfer sheet is exactly in place on the cabinet, simply rub the sheet with your fingertips to get the letters to adhere. As with decals, the best way to protect the lettering is to give it a light coat of Krylon spray or clear nail polish. A light coat of clear lacquer, however, will work just as well.



The completed project—commercial quality with the letter size proportional to the size of the instrument cabinet. Transfer type is available in many sizes and colors. It is applied by rubbing the acetate base on which it is mounted (below). While easy to apply, it rubs off and should be restricted to protected surfaces only.

Transfer type (right) is handy for recalibrating meter scales. Many high-quality surplus meters with common ranges (1 ma, 100 microamperes) are available for less than \$3 on the surplus market. Remove the old scale and give it a few coats of white enamel paint until old markings can't be seen, and then apply type.



After you've sprayed a few coats of white enamel on the old meter face, apply a light amount of pressure to the letters with a stick to transfer them. Presto, a new meter. Dressing up your projects doesn't take as much talent as you'd think. When planning your next project, don't forget that its looks really can count a lot, too.