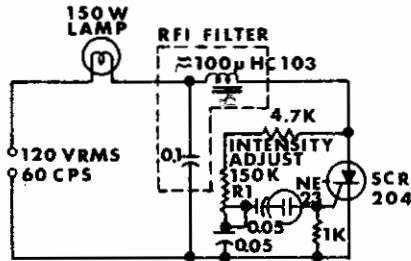
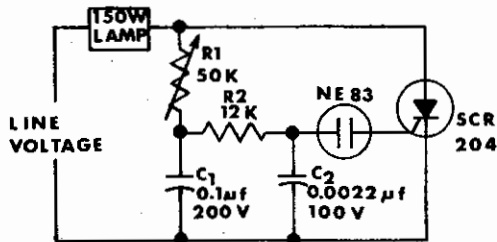


**PREHEATING PROGRAMMED LAMPS** - Minimizes thermal stresses on lamps and controls when programmed operation is repetitive for large number of cycles. Ujt control circuit provides preheating of lamp by triggering light activated scr late in each half-cycle. Setting of R2 determines minimum lamp current to maintain filament temperature just below visible level.

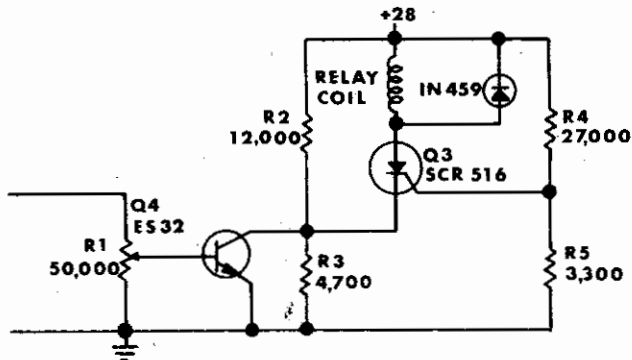


NOTE: ALL RESISTORS 1/2 WATT

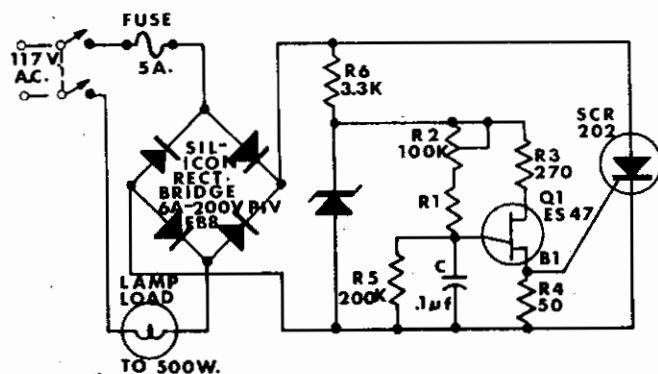
**SCR LAMP BRIGHTNESS CONTROL** - Will control up to 1.6 amp rms while operating directly from power line, yet is sufficiently compact to fit into base of common household lamp socket.



**TRIAC LAMP DIMMER** - Can easily be built into lamp socket or fixture.



**ACQUISITION RELAY DRIVER** - SCR Q3 and transistor Q4 provide stable triggering point for acquisition signal used in aligning missile guidance systems, without hysteresis effect.



**SCR LIGHT DIMMER** - Provides full range of brightness control for up to 500 w of lamps. Ujt Q1 provides turn-on pulses for scr.