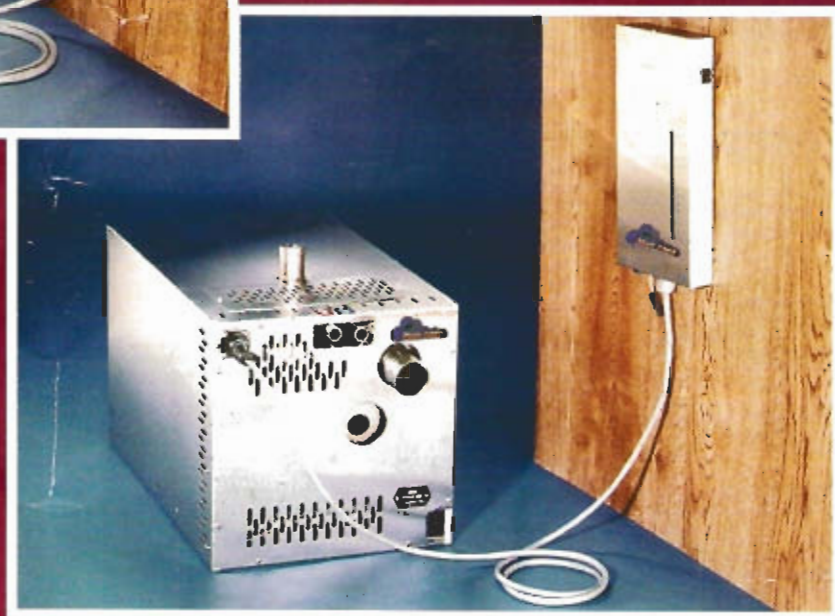


- RELIABLE
- EFFICIENT
- ECONOMICAL
- CLEAN
- QUIET
- COMPACT
- SAFE

- RUGGED
- INSULATED
- USER FRIENDLY
- ELECTRONIC CONTROL
- SEALED COMBUSTION
- CONTROLLED ZONES
- ENGINE HEATING
- DOMESTIC WATER HEATING



A DIESEL HOT WATER HEATING SYSTEM

Technical Specifications

Technical specifications for your **HURRICANE** heater, for diesel fueled marine and land vehicle heating. Stainless steel and copper for durability and the highest heat transfer for efficient and economical operation.

Model Numbers	Model SS-45	Model SS-32	Model CO-32	Model CO-20
Heat Input (kW)	45,000 (13.2)	32,000 (9.4)	32,000 (9.4)	20,000 (5.9)
Operating Voltage	10.5 to 15 volts DC			
Operating Electrical Consumption	6 amps	5 amps	5 amps	5 amps
Dimensions (box size)	14"H x 14"W x 24"D	14"H x 14"W x 24"D	7"H x 11"W x 19"D	7"H x 11"W x 19"D
Shipping Weight	65 lbs (30 kg)	65 lbs (30 kg)	29 lbs (17 kg)	29 lbs (17 kg)
Operation Temperature	150°F to 180°F max. (66°C to 82°C)			
Fuel Consumption, U.S. gal./hr. (L/hr.)	.3 (1.14)	.2 (.76)	.2 (.76)	.15 (.57)
Water Capacity - Heater, U.S. gal. (L)	5 (19)	5 (19)	1 (3.8)	1 (3.8)
Water Capacity - support equipment	<ul style="list-style-type: none"> • Fan heaters – 1 quart each (0.95 liters) • 3/4" (19 mm) heater hose – 2.29 gallons per 100 feet (8.67 litres per 30 m) • 3/4" (19 mm) copper tube – 2.1 gallons per 100 feet (7.95 litres per 30 m) • 5" diameter expansion tank – 2.2 quarts (2.08 litres) 			
Suggested Coolant Flow, gal./min. (L/min.)	6 (23)			
Ignition type	Hot Surface Ignitor			
Fuel types	Diesel Grade 1 or 2, Arctic Diesel, Kerosene or Stove Oil			
Fuel System	3/16" (fuel pump included)			
Water Hose	3/4" minimum O.D.			
Fitting Size	3/4" minimum) O.D.			

Due to our commitment for quality and product improvement, ITR reserves the right to modify or change without notice, any materials applications, equipment accessories and/or prices. All measurements and weights are approximate.

For more information please contact your local dealer or:
INTERNATIONAL THERMAL RESEARCH LTD.
 #4 - 1411 Valmont Way, Richmond, B.C., Canada V6V 1Y3
 Phone (604) 278-1272 Fax (604) 278-1274

Dealer

