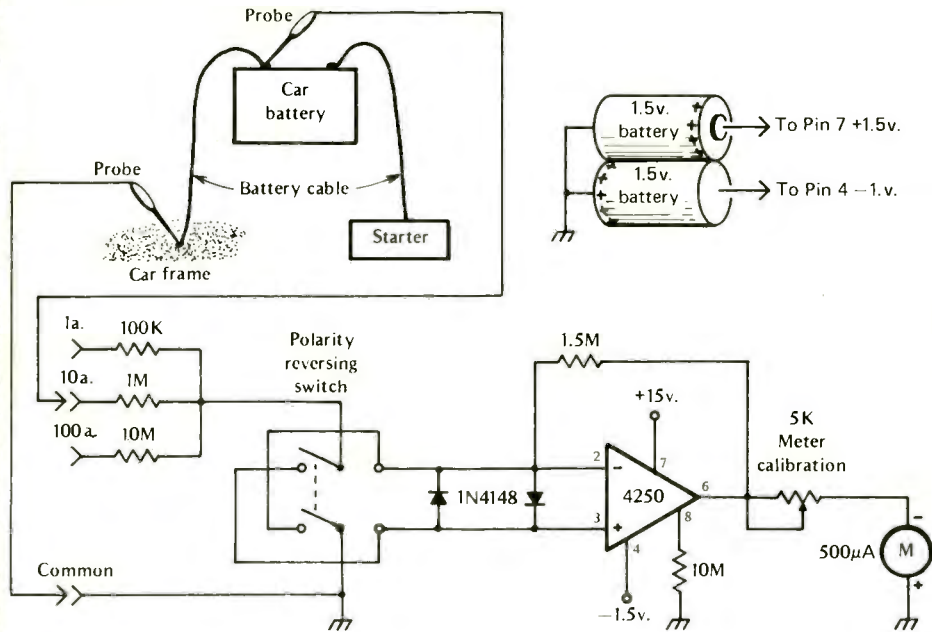


auto analyzer



Measuring the current drain on your car's battery can be quite a problem. For one thing, it's hard to find some place in the circuit where you can break the line to connect an ammeter.

Using this handy op-amp analyzer, you can measure the current drawn by any device in your car, whether you can find the wires going to it or not. The analyzer works by measuring the very small voltage that develops across the battery cables when current flows.

The analyzer can be built as a small portable test instrument, or permanently mounted on the dashboard. However, you must insulate the instrument so that only the probes make connection to the car.

Once you've connected the probe tips to the battery cable ends (either cable will do), you'll have to calibrate the unit. To do this you must measure the current flow somewhere in your car with an accurate ammeter, then adjust the analyzer for that current reading.