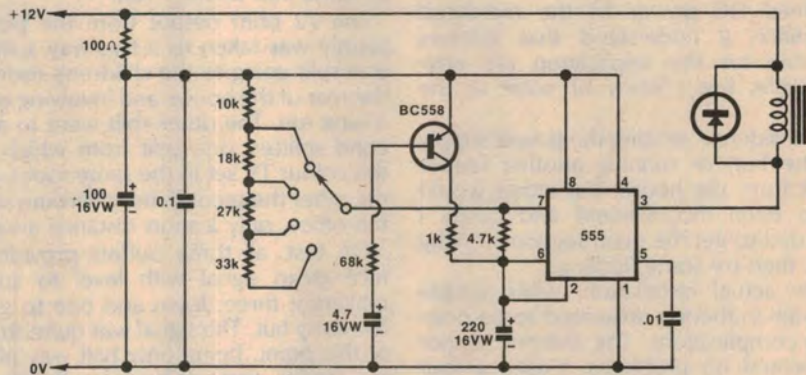


Simple modification to wiper delay unit

This simple and inexpensive modification may be added readily to the Wiper Delay Unit described in September, 1979.

With the original circuit, the first delay time after switch on was longer than the selected time interval. This meant that the wipers had to be manually switched to clear the screen. The addition of a series RC network and a transistor charge the timing capacitor immediately power is applied, thus giving two or three wipers to clear the windscreen. For the first 15 seconds the delay period is slightly shorter than usual as the timing capacitor is charging both through the timing resistors and the partially conducting transistor.

The 4.7 μ F capacitor should be a tan-



talum type to ensure low leakage. The number of initial wipers can easily be changed by altering the values of the 68k

resistor and 4.7 capacitor.

(By Mr C. Hall, 2/60 Lang Road, Centennial Park, NSW 2021.)