

## Monitoring Lightning

We have discovered that there was a printer's error in the schematic diagram for the "Storm- Warning Lightning Monitor" (*Electronics Now*, October 1998). The anode of D1 should be connected to the center conductor of J1 along with S2. Figure 1 in the article does not show that connection extending all the way; someone might think (incorrectly) that it should be connected to the outer conductor, grounding the input to IC1.

We apologize for any problems that this misprint might have caused.—*Editor*

## ...and Running Lights

It has come to my attention that the foil pattern that appeared in the article, "Daytime Running Lights for Your Car" (*Electronics Now*, October 1998) had an error. A corrected foil pattern as well as an updated parts-placement diagram (Fig. 1) appears to the right. We regret any inconvenience that might have occurred.—*Editor*

## Input and Information

I am writing about three things that have been mentioned either in editorials or in "Letters" in *Electronics Now*.

First, I like "Prototype." Its coverage of new science and technology, the type of material covered, and the way it is covered make "Prototype" one of the first sections I read in each issue. Second, I like the idea of having a column something like "Try This One" and "Technotes," which were in *Radio Electronics* in the 1950s and 1960s. I had a few items published in those columns at that time, and I already have plans for two short items to submit to the new "Try This One."

Third, there have been several questions about clocks that are self-correcting using radio signals from WWVB. I have just seen a catalog from Klockit (P.O. Box 636, Lake Geneva, WI 53137-0636; Tel:

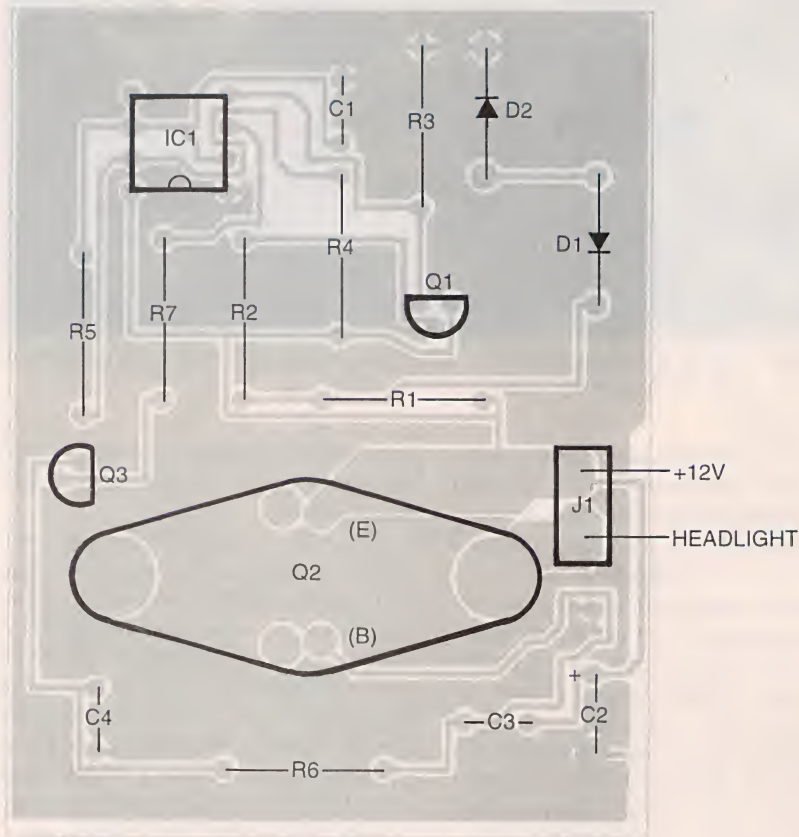
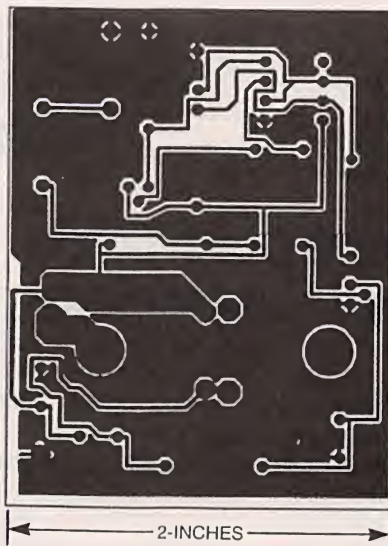


FIG. 1—PARTS-PLACEMENT DIAGRAM for the updated foil pattern



UPDATED FOIL PATTERN

800-556-2548). As their name implies, they sell kits for building clocks. They also sell several types of clock movements or replacements for old movements. Two of their clock kits include a WWVB receiver. Probably of more interest to *Electronics Now* readers are clock movements, powered by one AA cell, which have a WWVB receiver. These sell for \$27.95 plus shipping.

BILL STILES  
Hillsboro, MO

## Airport Chatter

I would like to point out a couple of items not originally mentioned in the article by Anthony Caristi, "The Airport Buddy" (*Electronics Now*, January 1999).