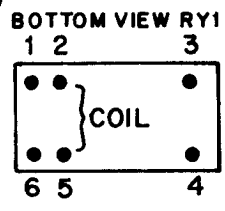
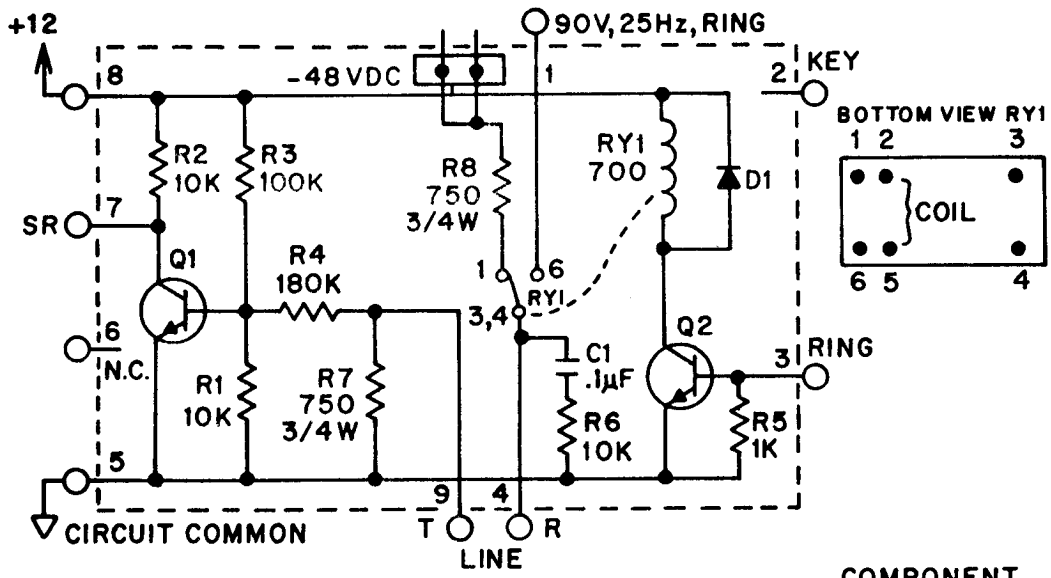
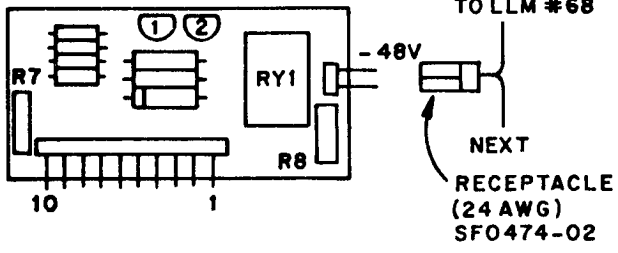


DRG. NO.	KC1593	A
DATE	3-21-88	
ISS.	CHANGE	
A	- 48VDC WAS A PAD MARKED ON BOARD. R8 POWER LIMIT WAS RI. ADDED LAYOUT. 4-29-88	



LAYOUT (PARTIAL):



COMPONENT IDENTIFICATION

COMP.	TYPE
Q1,Q2	MPS6515
RY1	D0263
D1	1N4002

NOTES:

- UNLESS OTHERWISE SPECIFIED, RESISTANCE IS RATED IN OHMS  $\pm 10\%$ , 1/4W.
- CAPACITANCE IS RATED IN MICROFARADS.
- TC4152 IS EQUIVALENT TO THE TC4151 (PREDECESSOR) BUT ALLOWS EASIER BACK AND FORTH CONVERSION BETWEEN 12V AND 48V LINE HYBRIDS (FOR TC4151 SCHEMATIC SEE KC1538).

INSTALLATION PROCEDURE, 48V LINE "HYBRID":

- A REGULATED 48 VDC POWER SUPPLY IS REQUIRED. NEGATIVE TERMINAL TO LLM #68 AND POSITIVE TERMINAL TO GROUND.
- PLUG TC4152 INTO ANY LLM (TC4150) LINE HYBRID SOCKET, AND CONNECT A WIRE FROM "- 48V" TO EDGE CONTACT # 68.

NOTE: 48V LINES CAN WITHSTAND EXTERNAL SHORTS BUT NOT EXTERNAL GROUNDS (R8 POWER LIMIT).

**MODEL TC4152**  
**TCIV 48V LINE "HYBRID"**  
 RAULAND-BORG CORP.  
 SKOKIE, ILL.  
 MADE IN U.S.A.  
 KC1593 **A**