

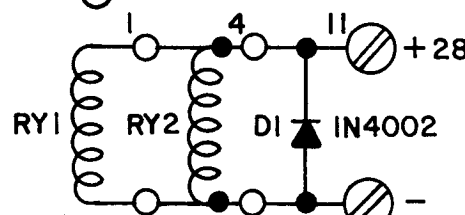
DRG. NO.		KC-1326		A	
DATE		2-15-78			
ISSUE	CHANGE				
A	INTERCHANGED TERMINAL NO'S 5 & 6, 7 & 8, ALSO RELAY'S PINS 8 & 9 3-17-78				

16	9	10
14	15	8
13	6	7
11	12	5
4	3	2
1		1

RY1 RELAY TERMINALS
BOTTOM VIEW
D-0227

10	6	7
8	9	5
4	3	2

RY2 RELAY TERMINALS
BOTTOM VIEW



**BUSS GATHERING RELAY
MODEL MCR-100A(*3)**

RAULAND-BORG CORP.

CHICAGO, ILL.

MADE IN U. S. A.

KC-1326 **A**

Handwritten note:
 04-1-88
 file
 19

- NOTES:
1. RELAYS SHOWN IN UNENERGIZED POSITION.
 2. R1-R4 ARE 1.58K ± 1%.
 3. SEE KC-1306 FOR MCR100 SCHEMATIC.