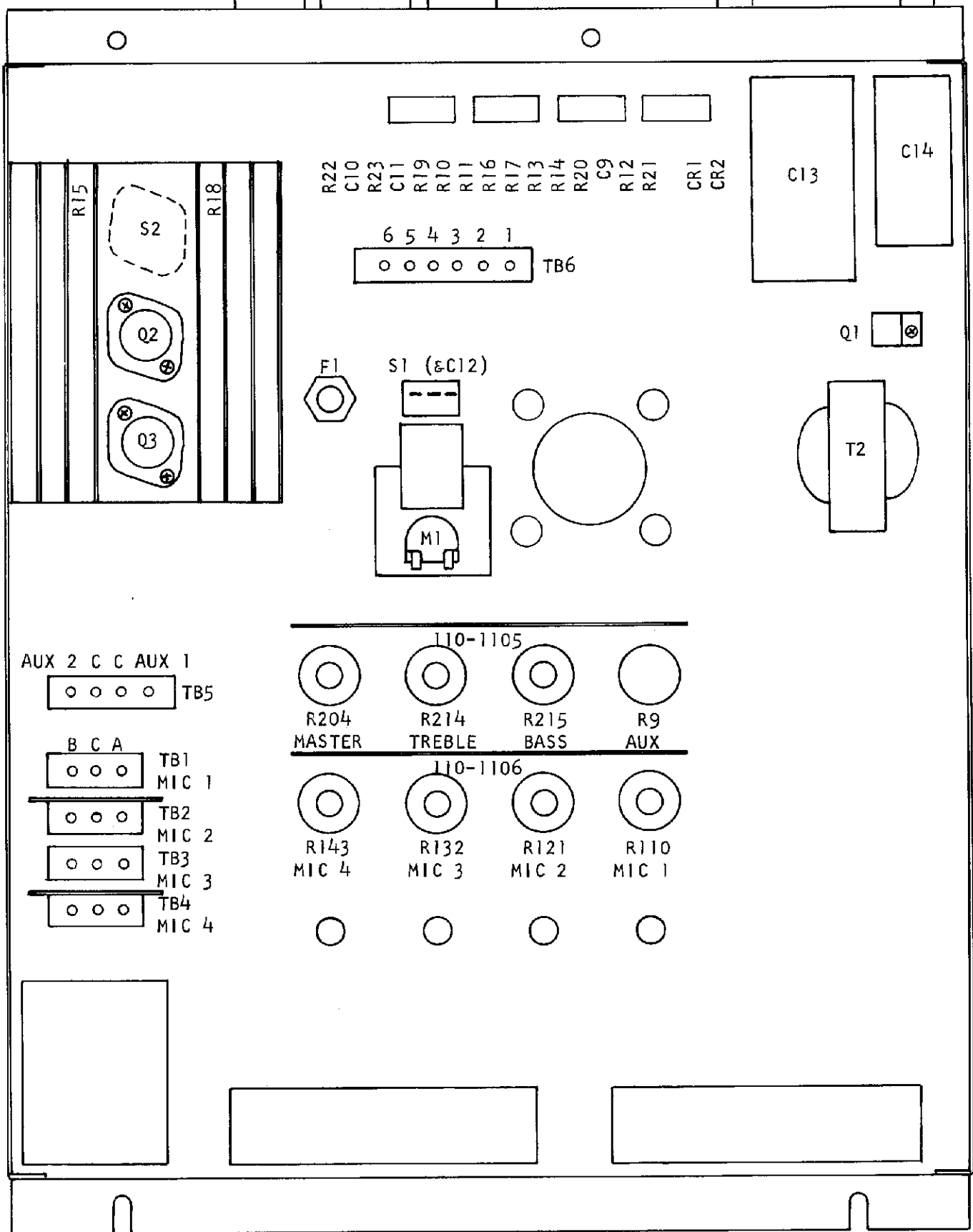
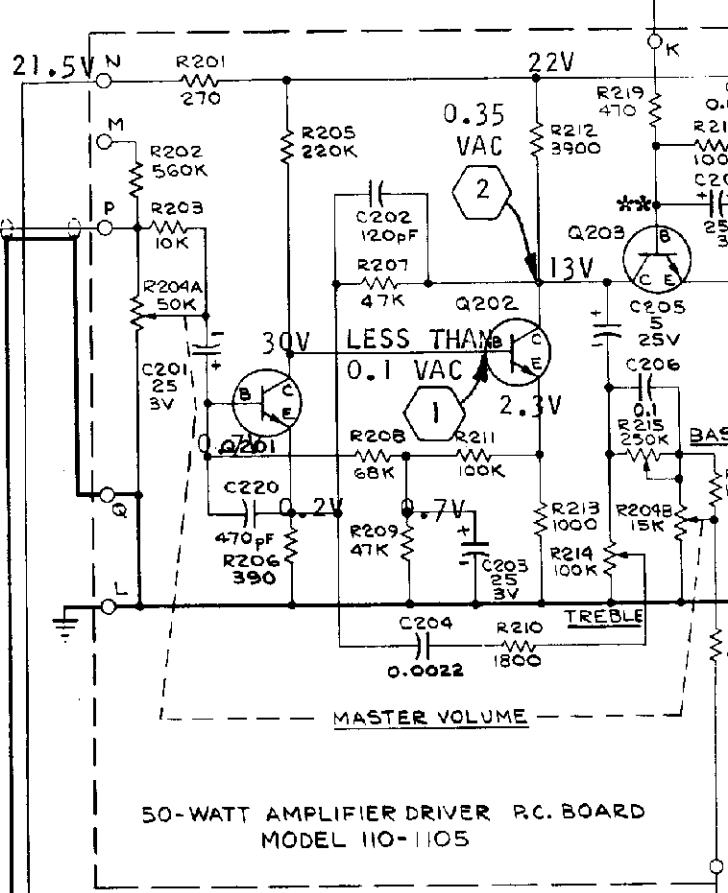
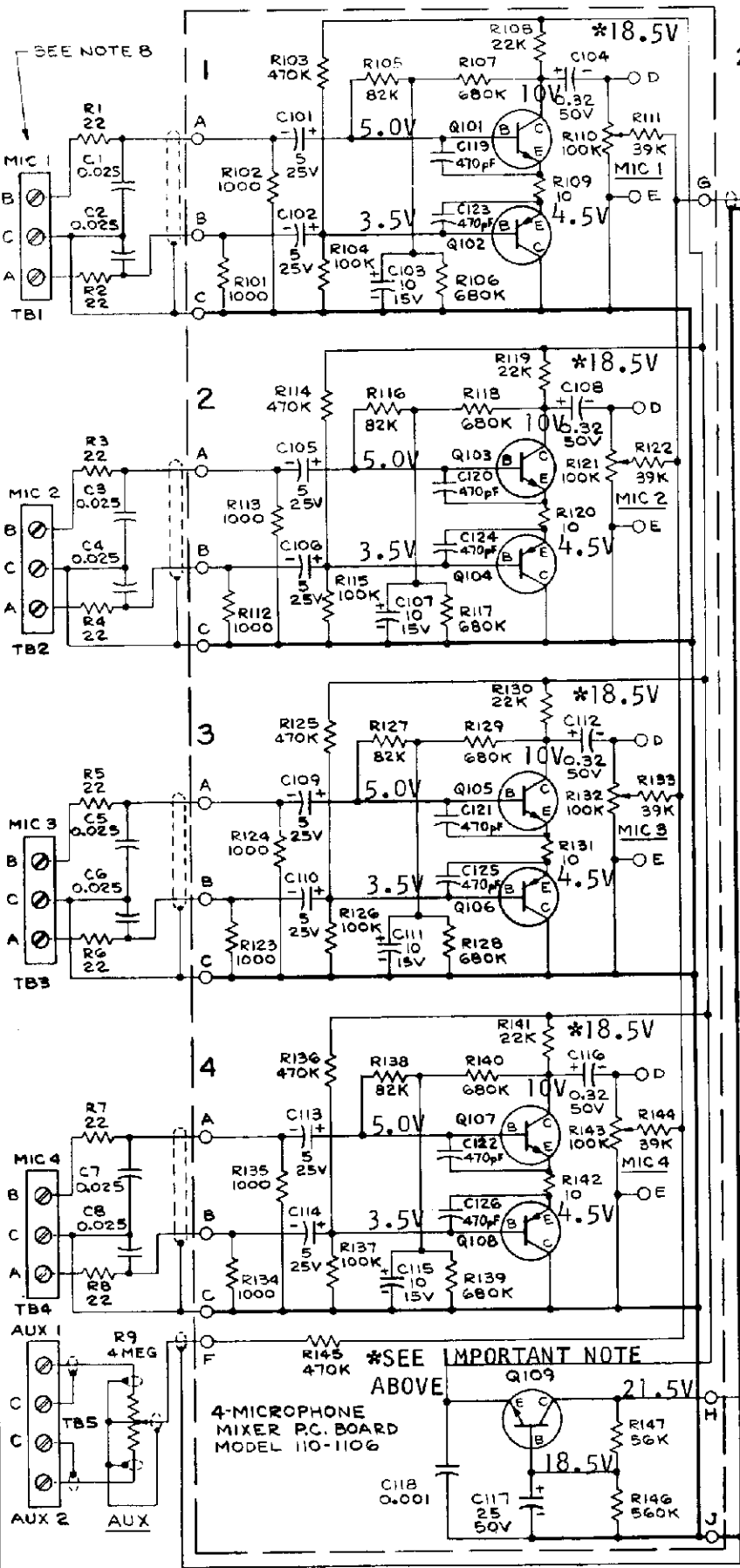


T3

T1



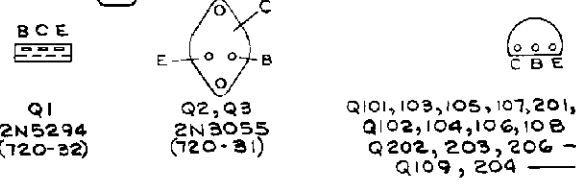
COMMUNICATIONS SYSTEMS SERVICE MANUAL

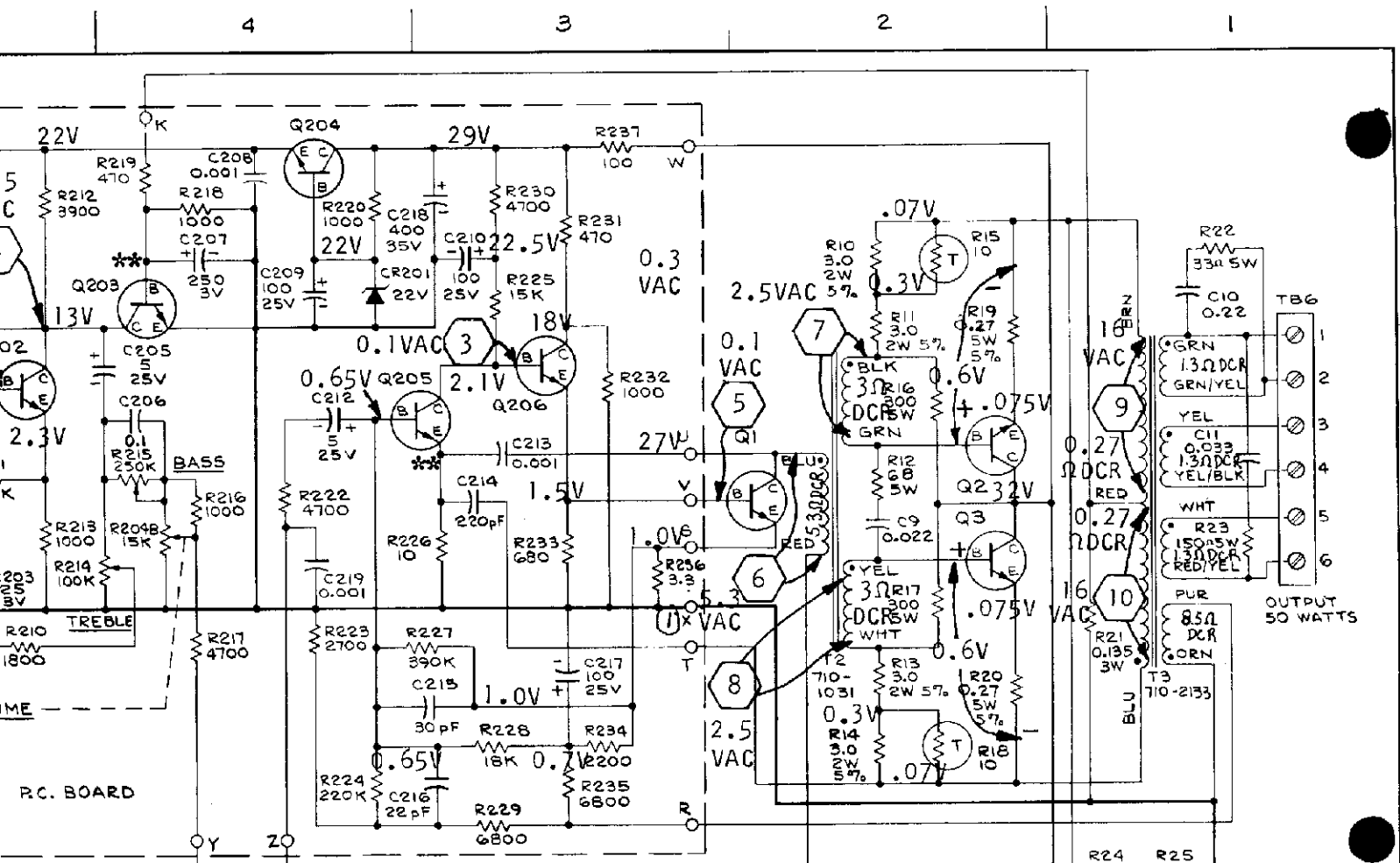


IMPORTANT NOTE - DC VOLTAGE REQUIRES ABOUT 10 SECONDS TO RISE TO 18.5V FOR COLLECTOR SUPPLY OF Q101, Q103, Q105 AND Q107.

105-130V
50-60 HZ

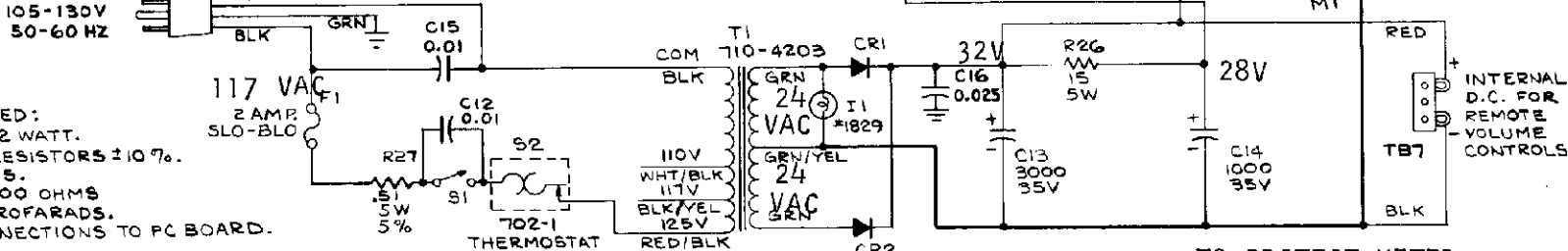
- NOTES:**
- UNLESS OTHERWISE SPECIFIED: ALL FIXED RESISTORS ARE 1/2 WATT.
 - TOLERANCES ON ALL FIXED RESISTORS $\pm 10\%$.
 - RESISTANCE VALUES IN OHMS. K = 1000 OHMS, MEG = 1,000,000 OHMS.
 - CAPACITANCE VALUES IN MICROFARADS.
 - O DENOTE TAPER PIN CONNECTIONS TO PC BOARD.
 - PINS "D" AND "E" ARE USED WITH MODEL 438-206 REMOTE VOLUME CONTROL.
 - REFER TO EXTERNAL CONNECTION SHEET 402-211 FOR PROPER INPUT TERMINATIONS.
 - VOLTAGES MEASURED WITH 20,000 Ω /V VOM AUDIO APPLIED; MAY VARY $\pm 10\%$.
 - AUDIO VOLTAGES MEASURED WITH 1 kHz @ APPLIED AT MIC 1, A&C; BASS & TREBLE VOLUME SET TO 10, MIC 1 VOLUME SET TO 25V AT 11. BOTTOM VIEWS



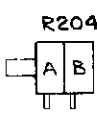


AGE REQUIRES
RISE TO 18.5V
OF Q101, Q103,

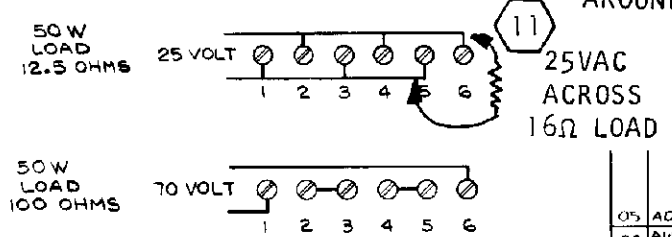
**LESS THAN 0.05V



WITH MODEL
CONTROL.
TION SHEET 402-211
ATIONS.
20,000Ω/V VOM WITH NO
±10%.
D WITH 1 kHz @ .002 VOLT
BASS & TREBLE AND MASTER
VOLUME SET TO OBTAIN



OUTPUT CONNECTIONS



TO PROTECT METER
TEMPORARILY
CONNECT JUMPER
AROUND R25

| | | | |
|----|--|----------|----|
| 05 | ADDED R-27 | 7-8-71 | EL |
| 04 | AUDED ACCORD DELETE J1 RECEPT | 10-13-70 | ST |
| 03 | ADDED C15, C16, C220, C119 THRU C126 | 3-19-70 | |
| 02 | C204 WAS 0.0047 C206 " 0.033 | 1-15-70 | |
| 01 | WAS S2 TO T1 117V BLK/YEL ADDED C219 R19, 20 WAS .51 OHMS | 9-30-69 | ST |

Q101, 103, 105, 107, 201, 205 - 2N5088 (720-49)
Q102, 104, 106, 108 - 2N5086 (720-48)
Q202, 203, 206 - MP56515 (720-46)
Q109, 204 - MP56566 (720-47)

| | | | | | | | | | |
|---|--|-------------------------------|-------|--|-------|---------------------|--------|----------------|-------|
| MATERIAL | | FINISH | | ANGLES TO BE X | | ISSUE | W.A.S. | DATE | APPR. |
| UNLESS OTHERWISE SPECIFIED DECIMAL DIMENSIONS TO BE 2 | | FRACTIONAL DIMENSIONS TO BE 2 | | | | | | | |
| DUKANE Corporation ESTABLISHED 1927 ST. CHARLES, ILLINOIS U.S.A. | | | | SCHEMATIC DIAGRAM MODEL 1A72B 50-WATT WALL-MTD. AMPL. | | SCALE | DATE | 6-20-69 | |
| NO. USED ON | | DRAWN | APPR. | CHECKED | ENGR. | NO. 190-1721 | | | |