

NOTE -

1. CUT JUMPER BETWEEN PINS 3 & 4 WHEN R3 10,000 OHM LINEAR ATTACK TIME CONTROL IS USED.

CUT JUMPER BETWEEN PINS 5 & 6 WHEN R4 2.5 MEGOHM LINEAR RELEASE TIME CONTROL IS USED.

2. SWITCH S1 PROVIDES FORM A & FORM B SECTIONS FOR FIELD MODIFICATIONS.

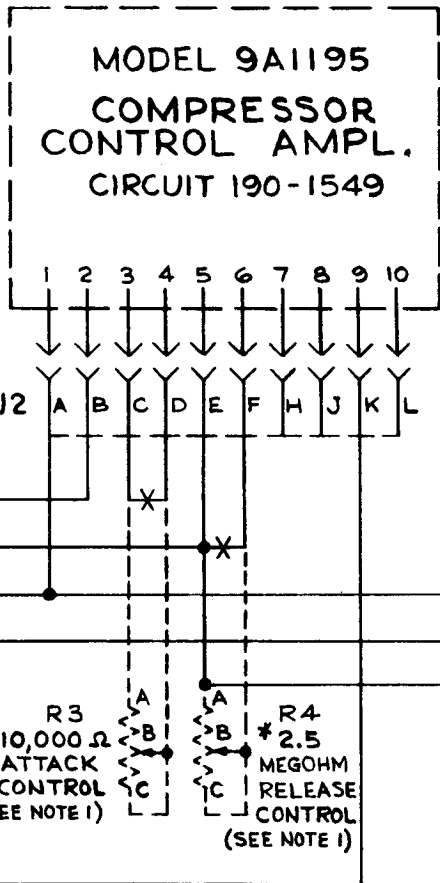
MATERIAL

UNLESS OTHERWISE SPECIFIED DECIMAL DI

DUKANE
Corporation
ESTABLISHED 1922
ST. CHARLES, ILLINOIS U.S.A.

A110

190-1561	
NO. REQ'D.	USED ON



BLACK — DC COMMON
WHITE — MIXING BUSS
RED — +24VDC

R3
* 10,000 Ω
ATTACK
CONTROL
(SEE NOTE 1)

R4
* 2.5
MEGOHM
RELEASE
CONTROL
(SEE NOTE 1)

* MINIMUM VALUE

MATERIAL		FINISH		SCALE		DATE		ISSUE		W A S		DATE		APPR.	
UNLESS OTHERWISE SPECIFIED DECIMAL DIMENSIONS TO BE ± .				FRACTIONAL DIMENSIONS TO BE ±				ANGLES TO BE ±				8-17-67			
DuKANE Corporation ESTABLISHED 1922 ST. CHARLES, ILLINOIS U.S.A.				SCHEMATIC DIAGRAM MODEL 19A110 COMPRESSOR KIT				DRAWN <i>lws</i>		APP'D. <i>1</i>		NO. 190-1561-00		ISSUE	
								CHECKED		ENGR. <i>2</i>					