
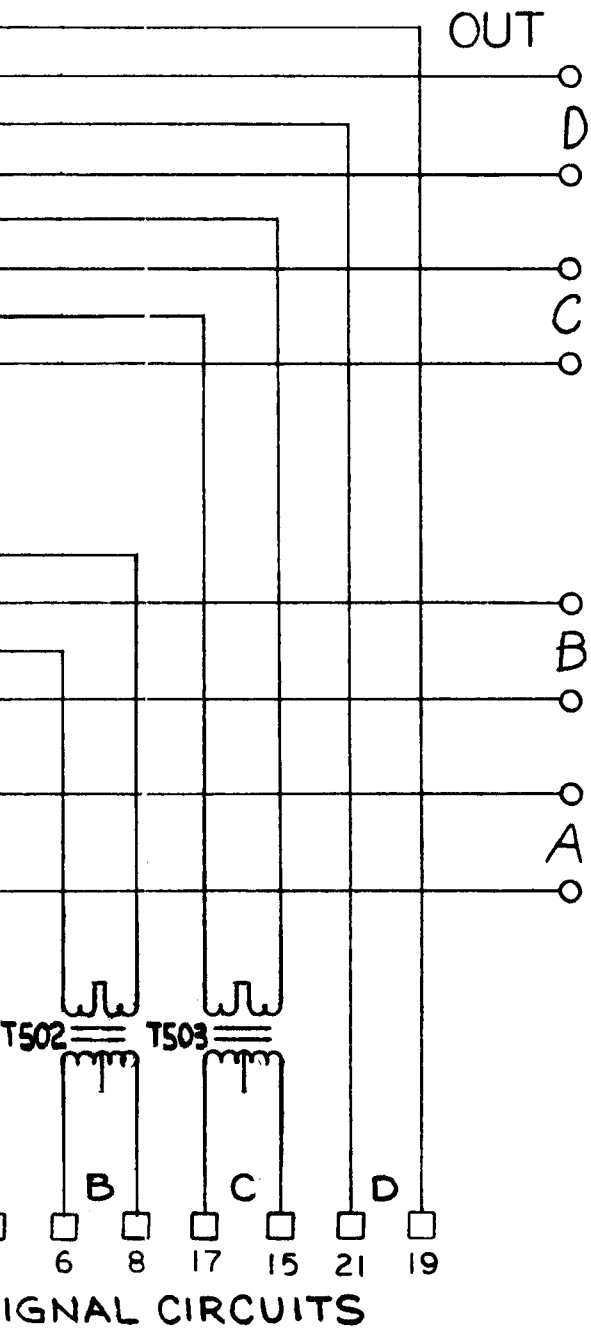
 BOARD CONTACTS  
 EXTERNAL CONNECTIONS

MATERIAL \_\_\_\_\_ FIN \_\_\_\_\_  
 UNLESS OTHERWISE SPECIFIED DECIMAL DIMENSIONS TO BE ± .

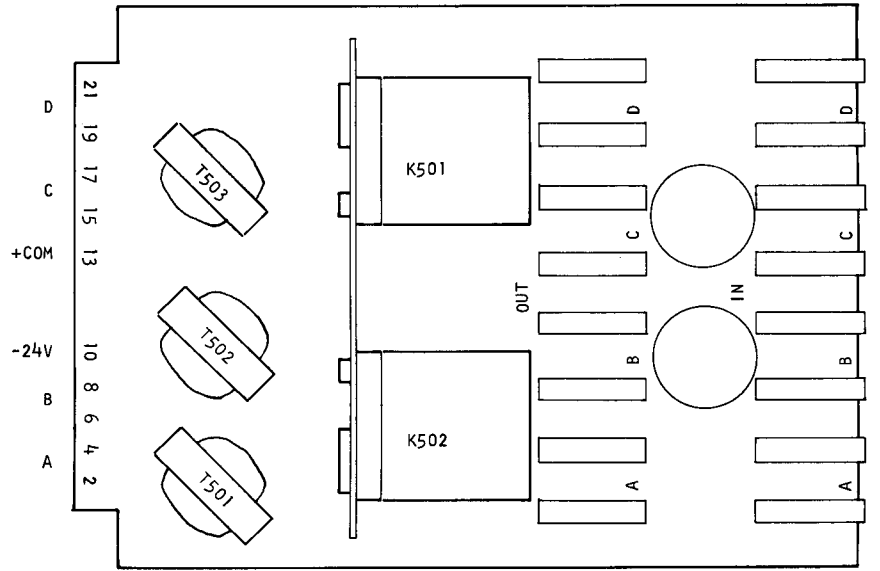
**DuKANE**  
 Corporation  
 ESTABLISHED 1922  
 ST. CHARLES, ILLINOIS U.S.A.

SCHEMATIC  
 INPUT

190-1470	
NO. REQ'D.	USED ON
	14A705



ELECTRICAL PARTS		
LEG	DESCRIPTION	PART NO.
K501	RELAY 4C 24V	596-103
K502		
T501,2,3	TRANSFORMER	710-52



FINISH		01 ADDED T501,2,3		1-15-68	
DIMENSIONS TO BE ±	FRACTIONAL DIMENSIONS TO BE ±	ANGLES TO BE ±	ISSUE	W A S	DATE APPR.

**SCHEMATIC**  
FOR # 110-940  
**INPUT BOARD**

SCALE	~	DATE	3-23-66
DRAWN	BH	APP'D.	<i>Doc</i>
CHECKED	<i>WR</i>	ENGR.	<i>[Signature]</i>
NO. 190-1470			01 <del>02</del> ISSUE