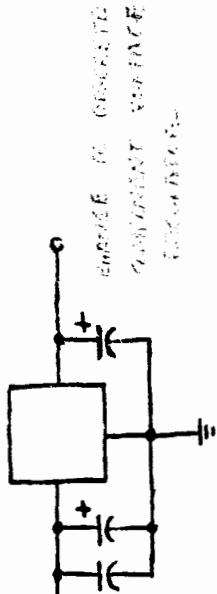


NOTES:
 1. COMPONENTS PREFIXED BY 1XX LEFT CHANNEL, COMPONENTS PREFIXED BY 2XX RIGHT CHANNEL, CONNECTOR PINOUTS - L (R).
 2. PHONO LOADING - RESISTOR SELECTED TO MATCH INPUT REQUIREMENTS.

SERVICE ADJUSTMENTS:
 #3 DC OFFSET - ADJUST FOR 0.01 VDC ON EITHER END OF R124 (224)
 #4 BIAS - ADJUST FOR 2V ± .2V ACROSS R120 (220)
 #5 DC OFFSET - ADJUST FOR 0.01 VDC ON EITHER END OF R148 (248)
 #6 BIAS - ADJUST FOR 2V ± .2V ACROSS R144 (244)

SPECTRAL DMC-10 SYSTEM BOARD
 SPECTRAL AUDIO ASSOCIATES 1981
 REV 2



CIRCUIT DIAGRAM
PREAMP
CASOSOVER

IMPROVEMENTS OVER SPECTRAL :

- 1) CASCODE INPUT OPTION
- 2) CURRENT REGULATION
- 3) VOLTAGE REGULATION

