

## QSCControl Overview

QSCControl is a powerful and flexible system that provides remote management and diagnostics of QSC amplifiers and other audio devices over an Ethernet network. You can monitor and control hundreds of amplifiers simultaneously, as well as perform a wide range of advanced functions, such as event logging and real-time monitoring of loudspeaker opens and shorts.

A QSCControl system is composed of System Controller (a Pentium-based PC) running QSCControl Software that is linked via Ethernet to CM16a Amplifier Network Monitors or other networked audio devices. The CM16a provides sixteen channels of remote gain adjustment and amplifier management for DataPort-equipped QSC amplifiers.

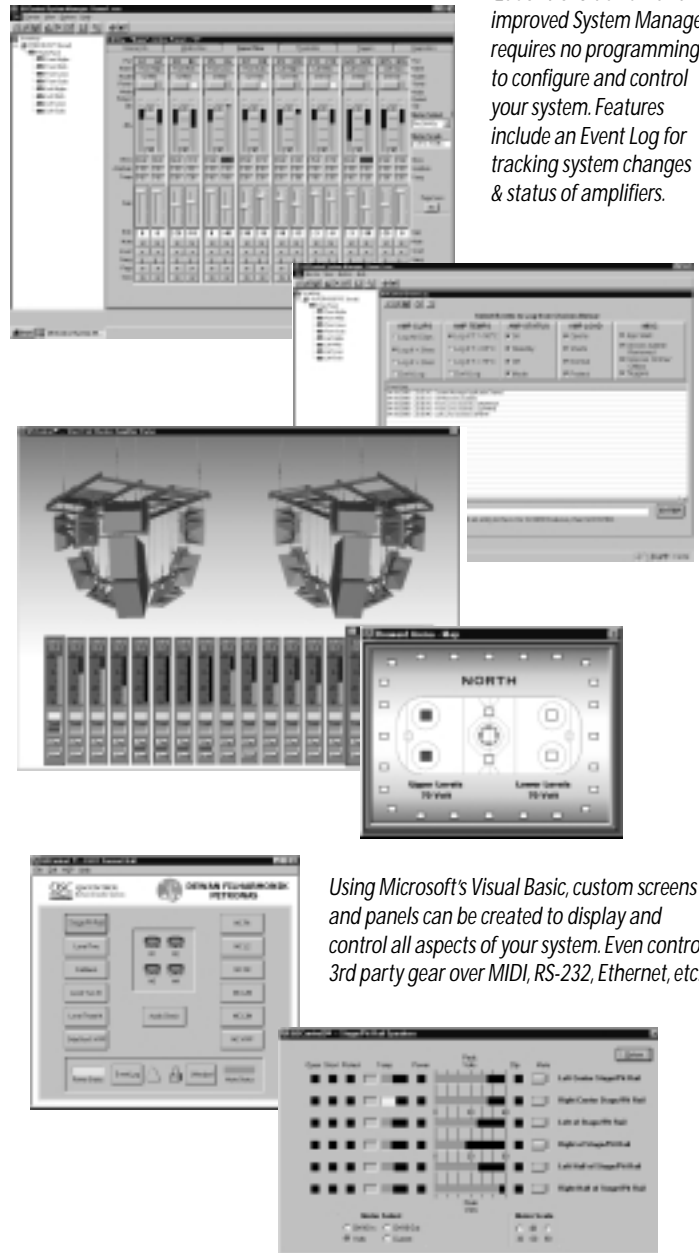
## QSCControl Software

QSCControl Software allows you to view and adjust signal controls with the click of a mouse. You can use System Manager, a standard application included with QSCControl Software, or design a custom application tailored to your specific needs with easy-to-use Visual Basic.

QSCControl Software Version 3.0 software significantly expands the system's overall capabilities. Users can now create custom applications with "drag-and-drop" programming, eliminating the need to write code. In addition to amplifier management, users can now control additional audio components including MIDI devices. A QSCControl system can now also be accessed and controlled by multiple System Controllers from multiple locations.

The software also supports the new CM16a Amplifier Network Monitor, a 1-RU unit that links the PC to networked QSC amplifiers to provide remote control and monitoring functions. The new CM16a expands QSCControl's amplifier monitoring functions by allowing users to adjust thresholds for detecting load opens and shorts, monitor real-time load resistance, monitor amplifier output in watts, and view amplifier headroom. The CM16a also supports QSC's new 4-channel amplifiers in addition to all DataPort-equipped QSC amplifiers. Users can also download future CM16a firmware updates quickly and easily from a remote PC via Ethernet.

*QSCControl 3.0's new and improved System Manager requires no programming to configure and control your system. Features include an Event Log for tracking system changes & status of amplifiers.*



*Using Microsoft's Visual Basic, custom screens and panels can be created to display and control all aspects of your system. Even control 3rd party gear over MIDI, RS-232, Ethernet, etc.*



Hear the Power of Technology.

1675 MacArthur Boulevard  
 Costa Mesa, CA 92626  
 Ph: 800/854-4079 or 714/957-7100  
 Fax: 714/754-6174  
 Web: [www.qscaudio.com](http://www.qscaudio.com)  
 Email: [info@qscaudio.com](mailto:info@qscaudio.com)

## **System Manager**

System Manager requires no programming whatsoever to operate the system. You can perform comprehensive signal metering and gain adjustment for each amplifier:

- Adjust input sensitivity for 3-volts or 1-volt
- Adjust input levels to the amplifier
- Meter pre-fader and post-fader levels
- Inverted the signal polarity
- Override each channel with an auxiliary input that can be used for emergency paging.
- Fold back to audio to the front-of-house at three different points in the audio chain: pre-fader, post-fader, or the amplifier output.
- Up to sixteen configuration presets can be recalled automatically

You can also perform comprehensive amplifier management:

- Monitor amplifier status including clip, protect, and operating temperature
- Monitor amplifier output including voltage, current, power in watts, and headroom
- Load status including load resistance and programmable thresholds for detecting loudspeaker opens and shorts
- Amplifier configuration including gain control settings and stereo, parallel, or bridge mode
- The amplifier's power status and AC standby mode

System Manager also provides an Event Log that allows you to keep track of system events such as amplifier clipping, protect modes, loudspeaker opens and shorts, and other conditions. These text files can be saved for future reference or downloaded remotely via modem. When any event occurs, System Manager automatically notifies you with a flashing icon.

## **Custom Applications**

Operate QSCControl with System Manager, our standard control application included with QSCControl Software 3.0, or create a custom application to meet your specific needs. Using standard Windows tools like ActiveX, COM, and plug-in components for Microsoft Visual Basic, QSCControl offers the most user-friendly and advanced development tools available today.

QSCControl's "open architecture" also allows the control of other manufacturer's devices using RS-232, RS-485, MIDI, Ethernet, or other interfaces for a single integrated solution.

## **Benefits of a Custom Application**

- Build simple control screens that can perform complex functions.
- Create a full range of system-wide presets that are available for different operating modes in multipurpose venues.
- Perform pre-programmed functions at designated times – without an operator present. For example, perform basic diagnostic checks at night, log the results, and power the system down.
- Control non-QSC equipment via Ethernet, MIDI, contact closures, RS-232, RS-485 or other interfaces for a single integrated solution.
- Automate performance monitoring and maintenance. For example, alert the operator whenever a loudspeaker circuit becomes open or shorted, mute the power amplifier, and log an error message for maintenance personnel.
- Provide a comprehensive set of fire and emergency mode functions that are invoked by an external contact closure or other simple signal.
- Employ full, multi-level password security, allowing only authorized personnel access to certain control functions.

## **What sets QSCControl apart from other control systems?**

### **Ease of Customization**

QSCControl uses Microsoft's Visual Basic, the most popular application development tool for Microsoft Windows. Not only can you create a custom control application tailored to your exact requirements, but also can be done with simple drag-and-drop controls easy to understand commands.

Don't have time build a custom application? No problem—QSC technicians will create one for you to your specifications, or you can hire a qualified QSCControl third-party developer.

### **Ethernet Network**

The QSCControl network uses standard off-the-shelf Ethernet hardware for its network. As the most widely used networking technology in the world, Ethernet is fast, reliable, low-cost, and is widely available.

### **TCP/IP Communication Protocol**

QSCControl uses TCP/IP, the same communications protocol used by millions worldwide to communicate on the Internet. This gives you the ability to interface with your existing LAN or WAN.

### **After-sale Support**

QSC System Support is here for you 24hrs/7 days a week. We'll help you setup your system, train your operators, and even work with you or a company of your choice to design custom control software.