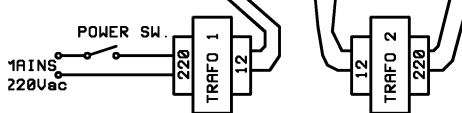
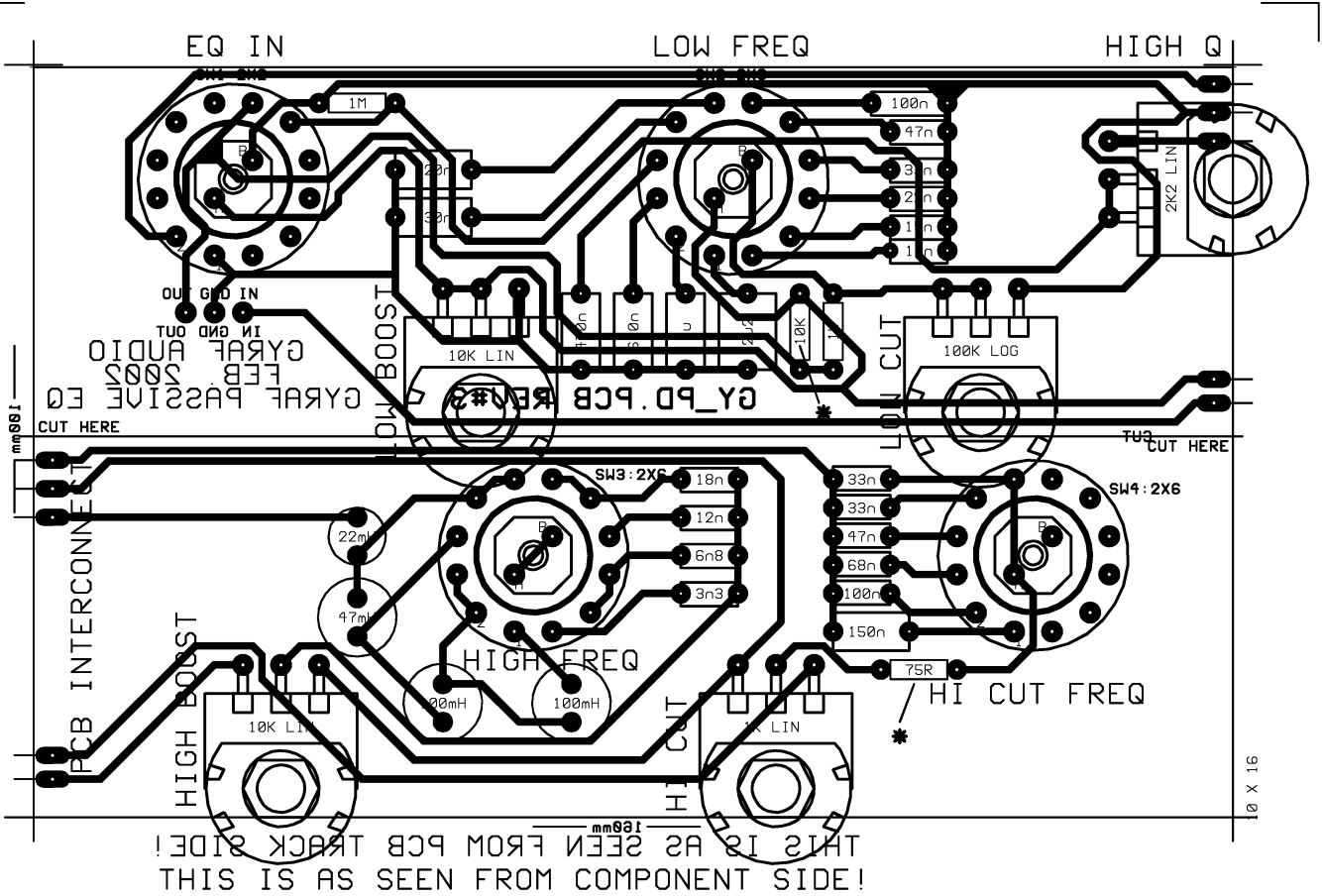


10 X 16
 15VAC FROM TRAF0 1
 12VAC TO TRAF0 2
 220VAC
 THIS IS PCB TRACK SIDE
 THIS IS COMPONENT SIDE



ALT. FOR 110Vac:
 TRAF0 1 = 110:12V 1.5A
 TRAF0 2 = 110:6V 1.5A

Gyraf Audio	
Rev no# 4	Date 10-03-2002
Subject PSU AND AMPLIFIER FOR GY_PD PULTEC EQ	
Filename: GY_PD.PCB	
Edited	Date

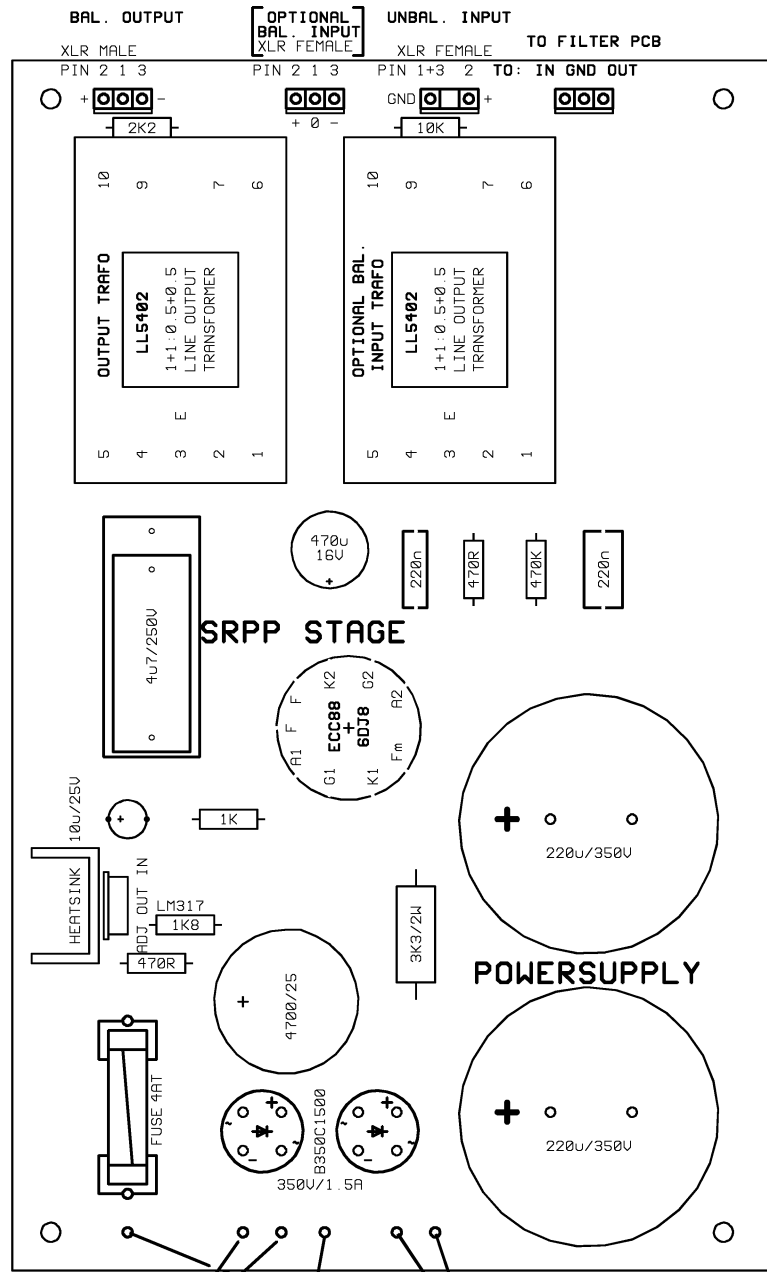


THIS IS AS SEEN FROM COMPONENT SIDE!
THIS IS AS SEEN FROM PCB TRACK SIDE!

FP LAYOUT:
66,67mm
31,44mm

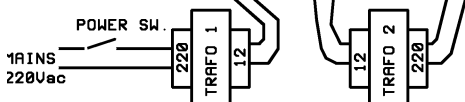
GYRAF AUDIO	
Rev no# 3	Date 09-02-2002
Subject: PASSIVE EQ SECTION FOR GYRAF PD PULTEC-TYPE EQ	
Filename: GY_PD_EQ.PCB	
Edited	Date

* 10X16cm EUROCARD SIZE PCB, CUT IN TWO
REV#3 75R AT HI-CUT, 10K AT LO BOOST



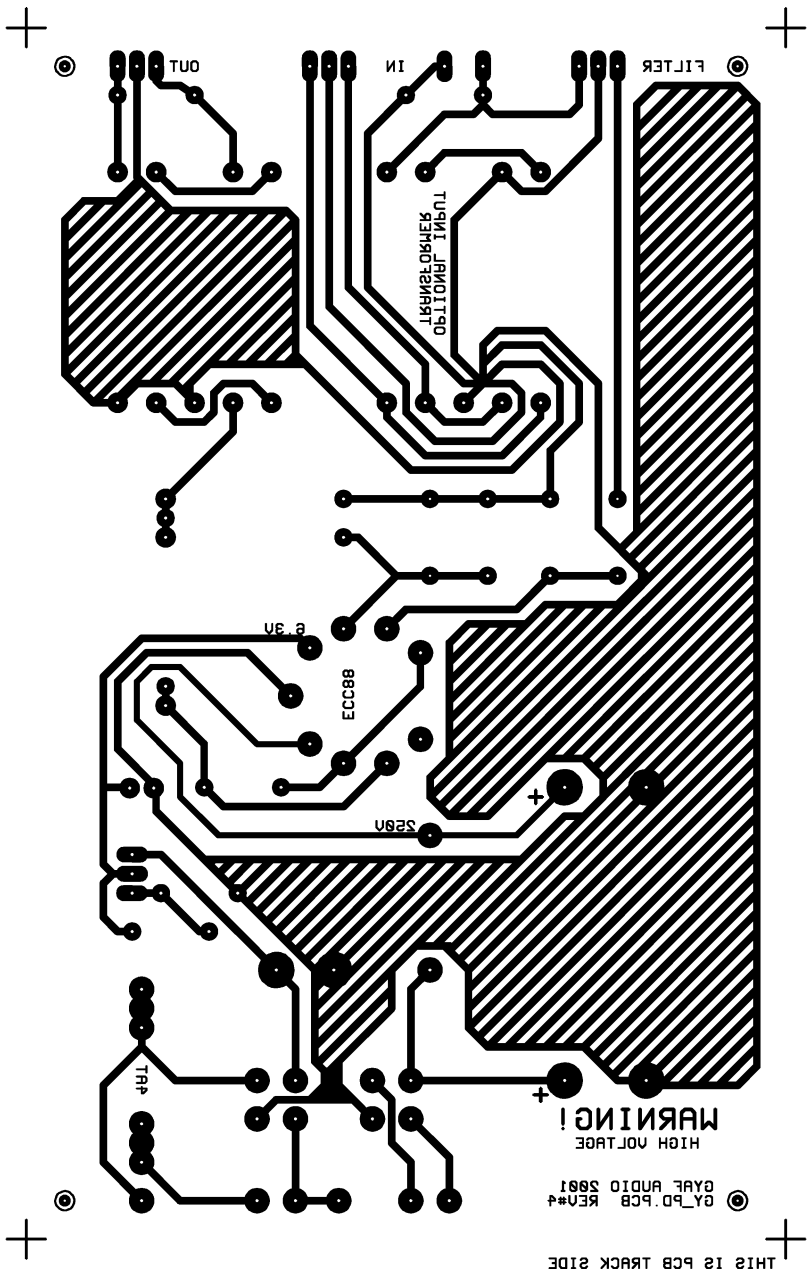
15VAC FROM TRAF0 1
 12VAC TO TRAF0 2
 220VAC

THIS IS COMPONENT SIDE



ALT. FOR 110Vac:
 TRAF0 1 = 110:12U 1.5A
 TRAF0 2 = 110:6U 1.5A

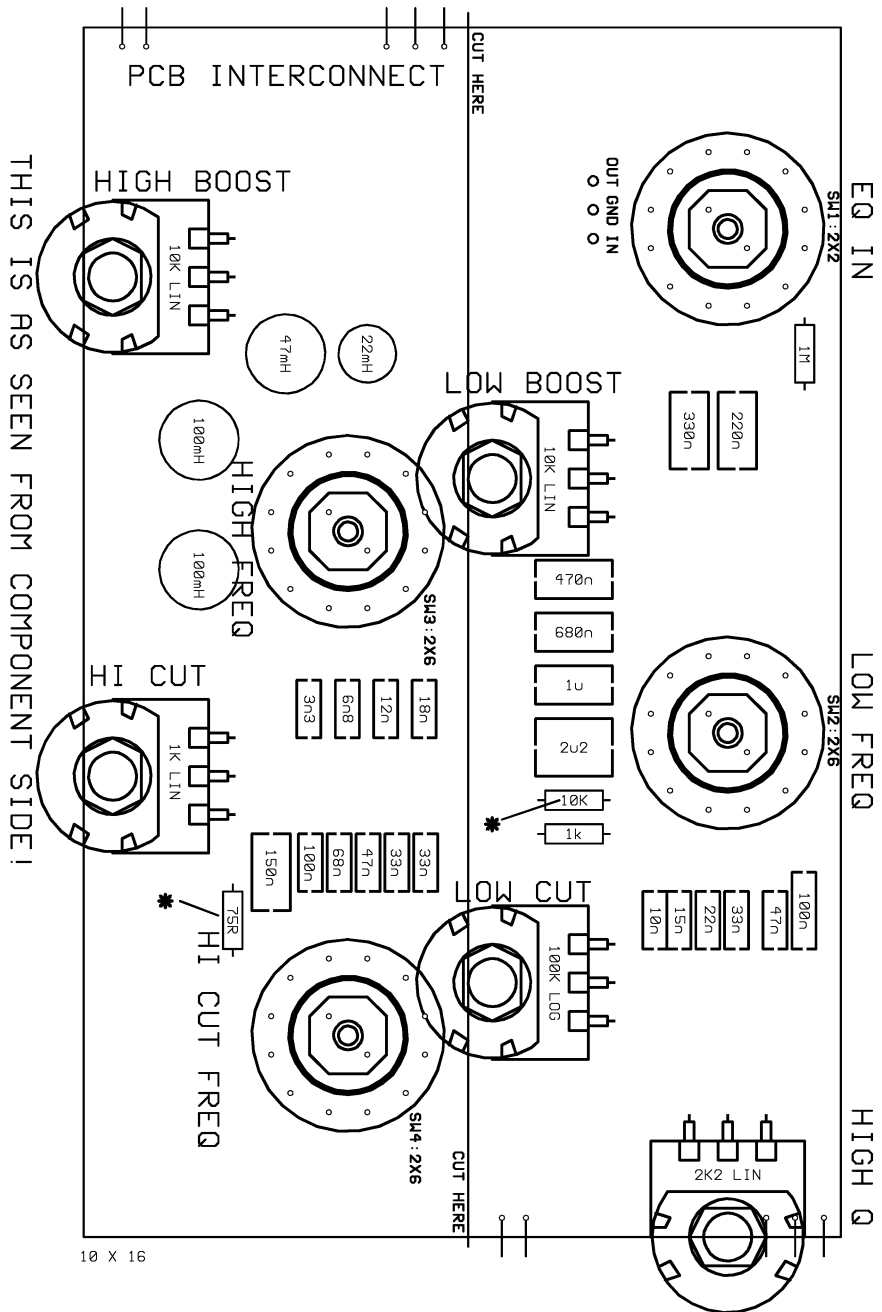
Gyraf Audio	
Rev no# 4	Date 10-03-2002
Subject PSU AND AMPLIFIER FOR GY_PD PULTEC EQ	
Filename: GY_PD.PCB	
Edited	Date



WARNING!
HIGH VOLTAGE

GYRF AUDIO 2081
0Y_PD.PCB REV#4

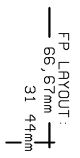
THIS IS PCB TRACK SIDE



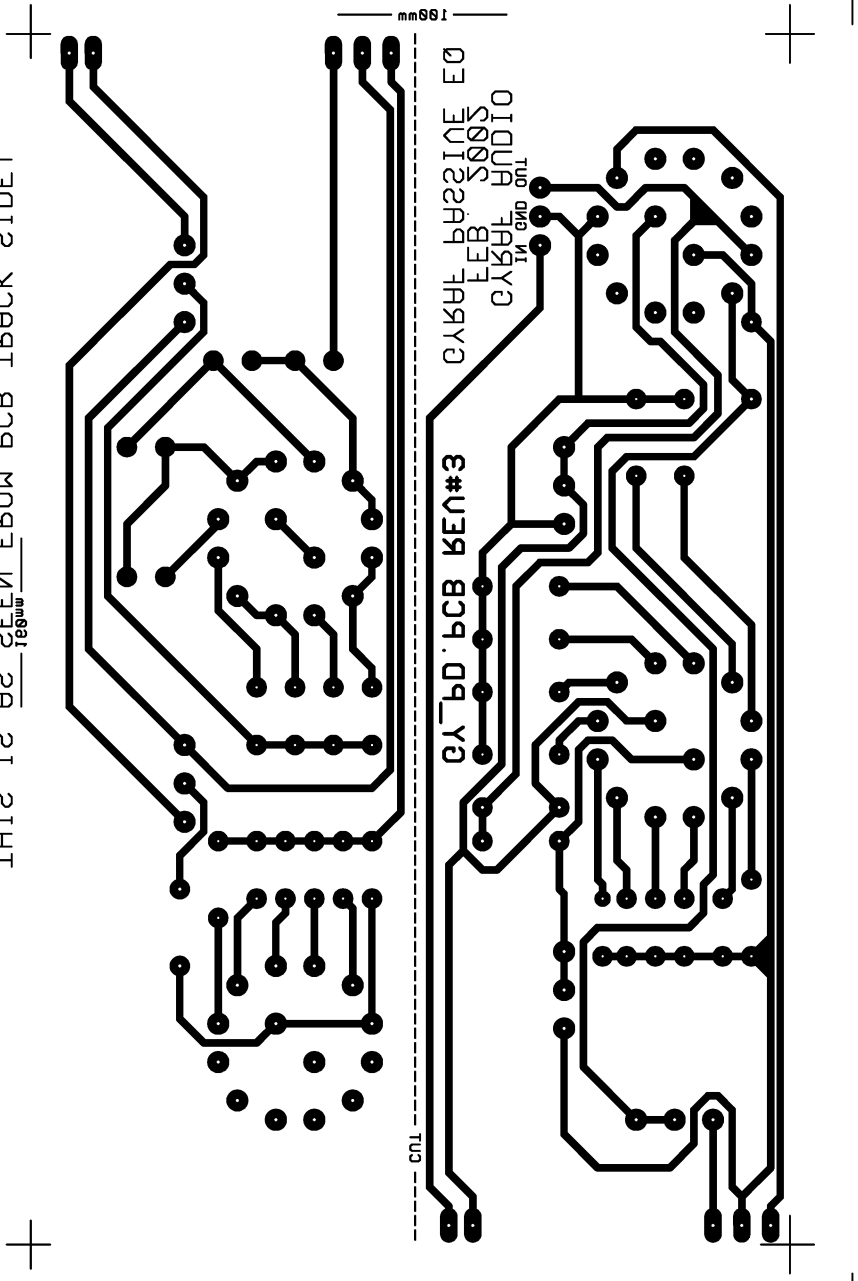
10 X 16

THIS IS AS SEEN FROM COMPONENT SIDE!

GYRAF AUDIO	
Rev no# 3	Date 09-02-2002
Subject: PASSIVE EQ SECTION FOR GYRAF PD	
File name: GYPD_EQ.PCB	
Edited	Date
*10X16cm EUROCARD SIZE PCB CUT IN T10	
*REV#3 75R AT HI-CUT, 10K AT LO BOOST	



THIS IS AS SEEN FROM PCB TRACK SIDE I



18mm

CUT