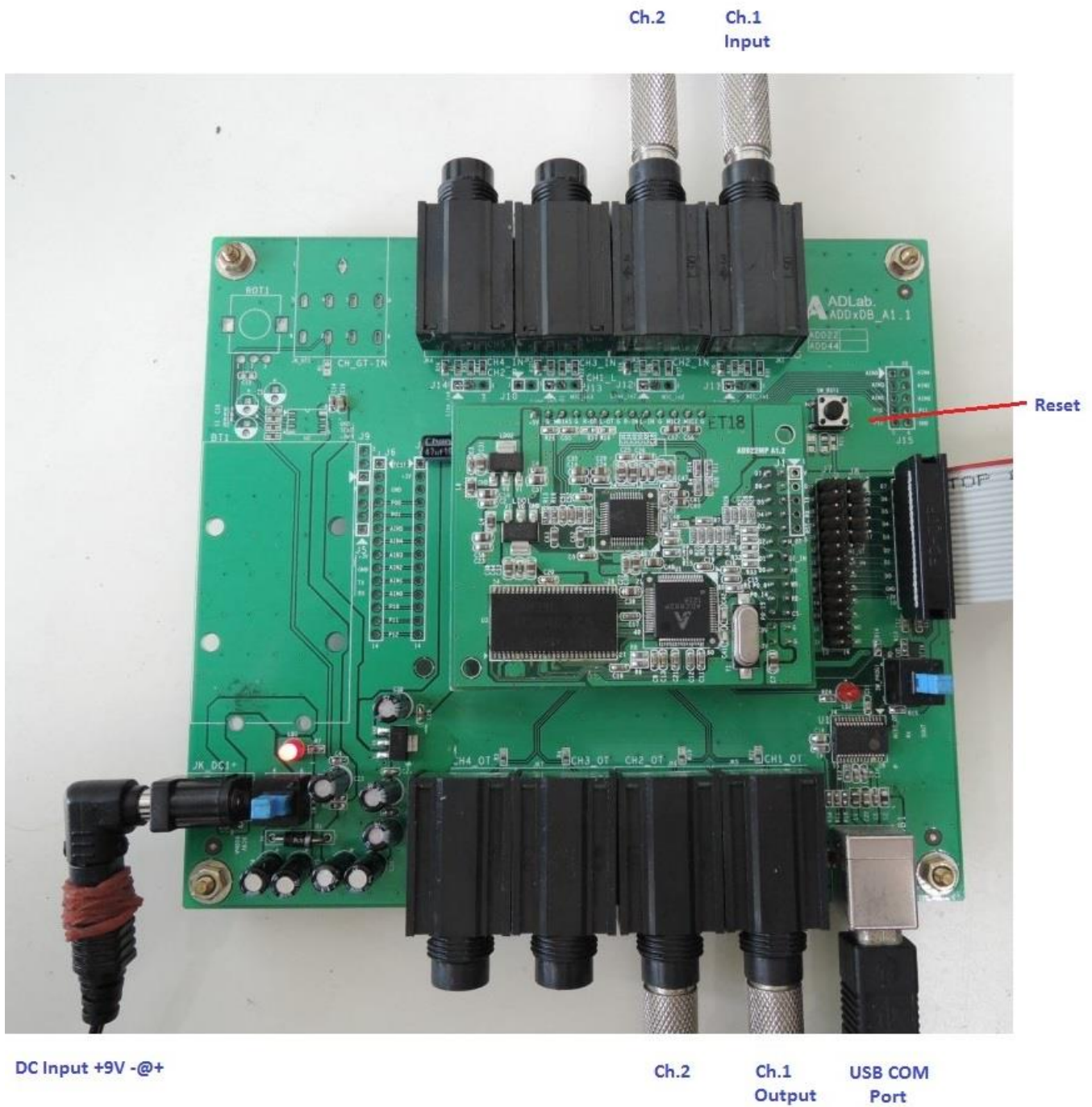


DJ Hardware Control User Manual

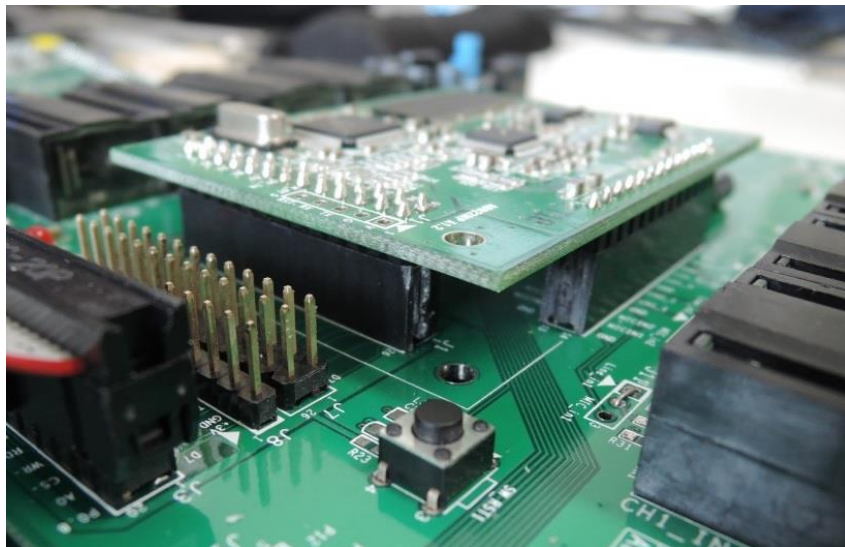
1. Connect the Demo Board

Connect the module to demo board ADDxDB, then link the power (outside: negative, inside: positive) and the audio I/O connect hardware panel by hardware bus, do not connect USB cable, release USB switch button:

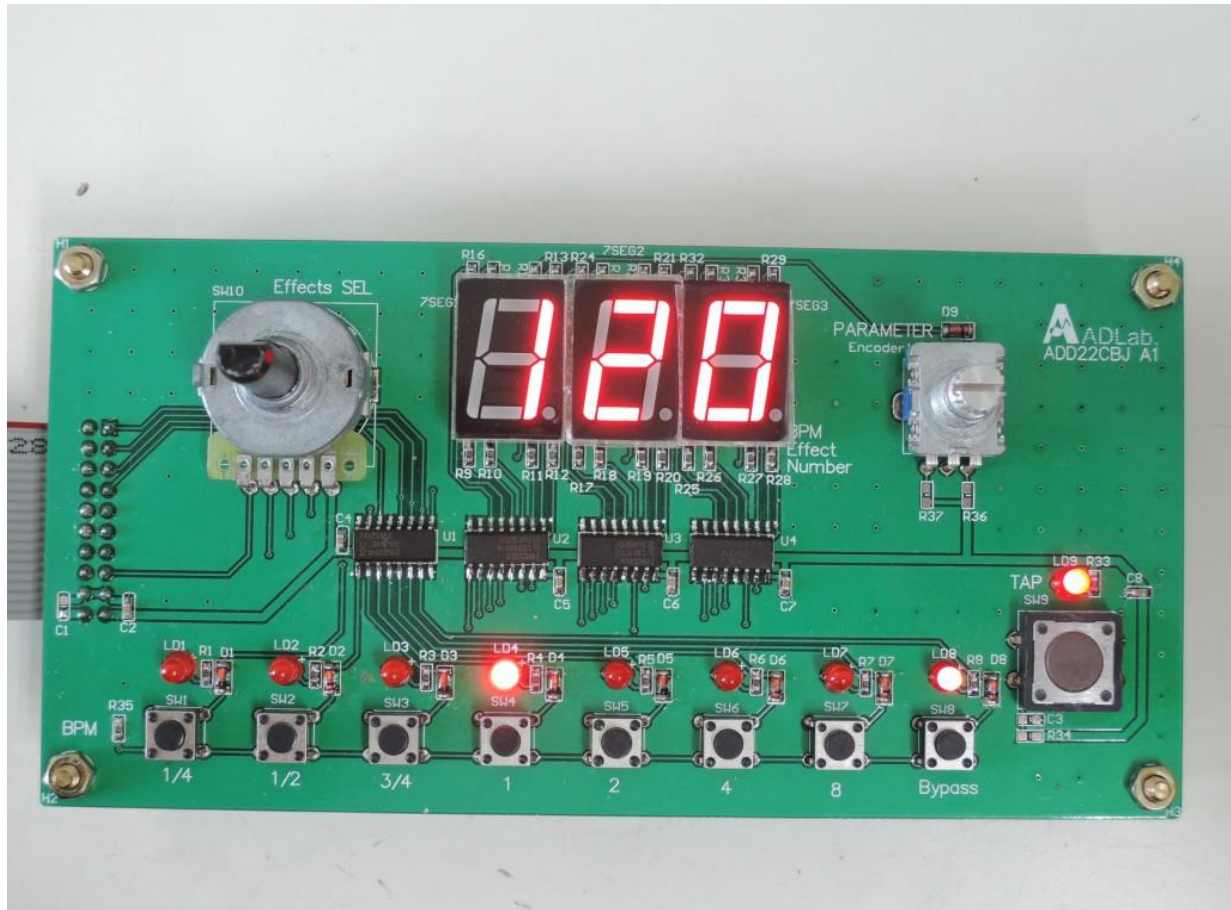


2. Module Installation

The module pin is aligned with the right 2 * 13pin:



3. Operate Hardware Control Panel



4. Demo Board Function

There are 2 encoders + 10 switches from left to right:

- Effects Encoder

Switch 16 sound effects.

- Parameter Encoder

Adjust the effect parameter range 0~127.

- Parameter Encoder Switch

Switch parameters 1/2.

- BPM Switch*7

In the BPM linked condition(one of the 7 LED lights will be turn on), select the sub-beat time.

- Bypass Switch

Start the effect control.

- TAP Switch

Click: In the BPM linked condition(one of the 7 LED lights will be on), double-click for input time.

Press: Switch BPM detect Manual/Auto.

When operation is stopped, the panel will display the current BPM value.

5. Effect List

	Effect name	Parameter 1	Parameter 2	Beat Divide function
1	Delay	Delay Time	Dry/Wet Level	Yes
2	Echo	Delay Time	Dry/Wet Level	Yes
3	Reverb	Reverb Time	Dry/Wet Level	
4	Auto Filter (BP)	Rate	Depth	Yes
5	Manual Filter (BP)	Cutoff Freq.	Resonance	
6	Auto Filter (HP)	Rate	Depth	Yes
7	Manual Filter(HP)	Cutoff Freq.	Resonance	
8	Auto Filter(LP)	Rate	Depth	Yes
9	Manual Filter(LP)	Cutoff Freq.	Resonance	
10	Phaser	Rate	Depth	Yes
11	Flanger	Rate	Depth	Yes
12	Auto Pan	Rate	Depth	Yes
13	Vocal Cancel	Central Cut Freq	Width	
14	Vocoder	Carrier Freq	Dry/Wet Level	
15	Ring Modulator	OSC Freq	Dry/Wet Level	
16	Pitch shifter	Pitch Tone	Dry/Wet Level	