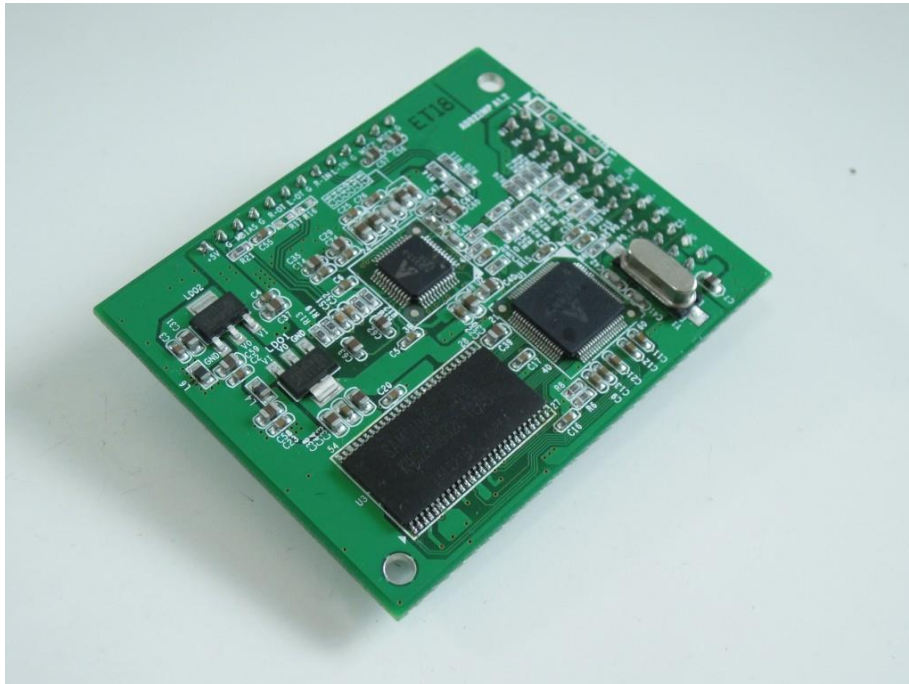


# **ADD22MP DJ**

**With AD2882P DSP**



## **1. Applications**

Digital signal processing for DJ Mixing and any devices which need **DJ Mixing** function.

Like DJ mixer...etc.

## **2. Overview**

The ADD22MP module, driven by the firmware ADD22DJ described in this datasheet, is a fully MIDI controllable, high quality audio processing device. The ADD22MP includes real time 24-bit “AD2882P” DSP engine, It provides “DJ Mixer” function,also plenty of general IO pins for user interface.

This module design for multi-purpose, the AD2882P DSP use with function which need to use SDRAM, controlled by hardware panel .

### 3. Specification

|                    |                            |
|--------------------|----------------------------|
| Analog Input       | 2 ch                       |
| Analog Output      | 2 ch                       |
| Input Impedance    | 110k $\Omega$              |
| Output Impedance   | 10.5k $\Omega$             |
| Max. Input Level   | 3.15Vp-p                   |
| Max. Output Level  | 3.5Vp-p                    |
| AD/DA conversion   | 48kHz/24bit                |
| Dynamic Range      | 104 dB                     |
| THD+N              | < -90 dB                   |
| Frequency Response | 10Hz - 20kHz +/- 0.1 dB    |
| Power supply       | DC 5V, 150mA (stand-alone) |
| Power Consumption  | 750 mW                     |

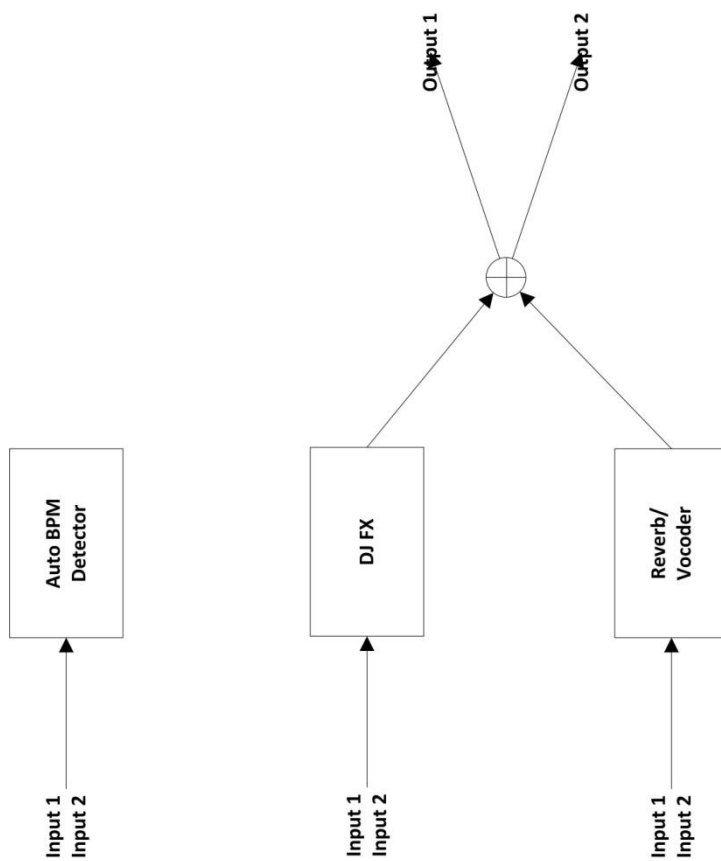
### 4. Features

- BPM Detector.
- Vocoder effect.
- Space effect.
- Modulation effect.

## 5. Effect List

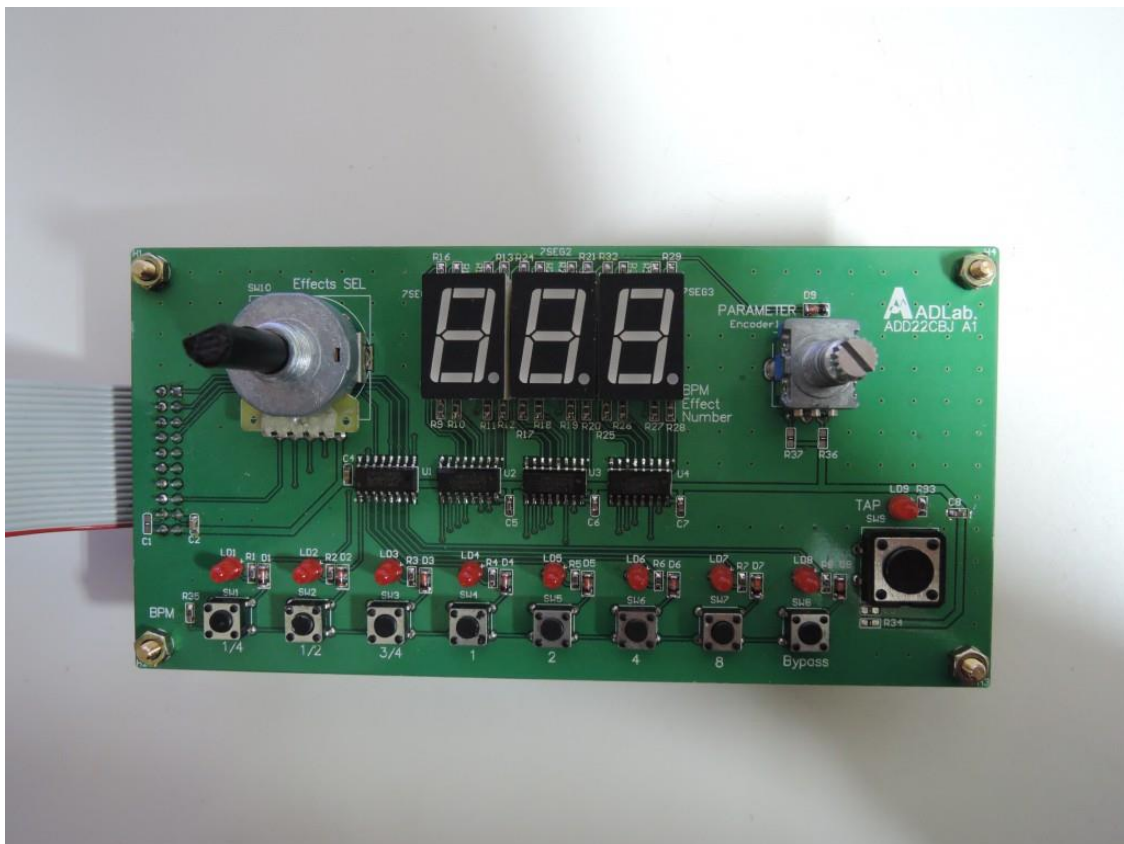
|    | Effect name        | Parameter 1      | Parameter 2   | Beat Divide function |
|----|--------------------|------------------|---------------|----------------------|
| 1  | Delay              | Delay Time       | Dry/Wet Level | Yes                  |
| 2  | Echo               | Delay Time       | Dry/Wet Level | Yes                  |
| 3  | Reverb             | Reverb Time      | Dry/Wet Level |                      |
| 4  | Auto Filter (BP)   | Rate             | Depth         | Yes                  |
| 5  | Manual Filter (BP) | Cutoff Freq.     | Resonance     |                      |
| 6  | Auto Filter (HP)   | Rate             | Depth         | Yes                  |
| 7  | Manual Filter(HP)  | Cutoff Freq.     | Resonance     |                      |
| 8  | Auto Filter(LP)    | Rate             | Depth         | Yes                  |
| 9  | Manual Filter(LP)  | Cutoff Freq.     | Resonance     |                      |
| 10 | Phaser             | Rate             | Depth         | Yes                  |
| 11 | Flanger            | Rate             | Depth         | Yes                  |
| 12 | Auto Pan           | Rate             | Depth         | Yes                  |
| 13 | Vocal Cancel       | Central Cut Freq | Width         |                      |
| 14 | Vocoder            | Carrier Freq     | Dry/Wet Level |                      |
| 15 | Ring Modulator     | OSC Freq         | Dry/Wet Level |                      |
| 16 | Pitch shifter      | Pitch Tone       | Dry/Wet Level |                      |

## 6. Signal Block Diagram



## 7. Hardware Control

- 16 essential DJ beat effect for DJ mixer on binary encoder.
- Each effect with two parameter editing from one rotary encoder.  
Auto BPM function also can be controlled by TAP switch manually, there is a tempoLED indicate the present beat
- 3-digit 7 segment LED for BPM/parameter display.
- 7 beat divider switch ( $1/4$ '  $1/2$ '  $3/4$ '  $1$ '  $1/2$ '  $1/4$ '  $1/8$ '  $1$  beats) that can sync with effect which is useful for more accurate effect parameter control.



## 8. Module Dimension

