

REVISIONS		
ZONE	REV. DESCRIPTION	DATE
A	RELEASED, PR316	05-DEC-95

- NOTES: UNLESS OTHERWISE SPECIFIED.
1. ALL RESISTORS 1/4W, 5%.
 2. ALL CAPACITORS 35V MINIMUM.
 3. ALL DIODES 1N4148.
 4. ALL TRANSISTORS J111.
 5. ALL ZENER DIODES 5%, 1/2W.
 6. DC VOLTAGES READ TO GROUND WITH A DVM. NO INPUT SIGNAL.
 7. AC VOLTAGES READ TO GROUND WITH A DVM UNDER THE FOLLOWING CONDITIONS:
1KHz INPUT AT J1
8Ω RESISTIVE LOAD CONNECTED FROM CP1 TO CP2
NO FOOTSWITCH
CHANNEL SELECT "ON"
LEVEL SWITCH AT -7dB
GAIN AT "1"
REVERB AT "1"
ALL OTHER CONTROLS SET TO "5"
PATCH CORD FROM J2(SENDS) TO J3(RETURN)

MUSICAL INSTRUMENTS
1130 Columbia Street
Brea, California 92621

TITLE: SCHEMATIC DIAGRAM
THE ROC PRO 700

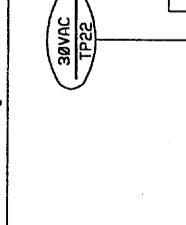
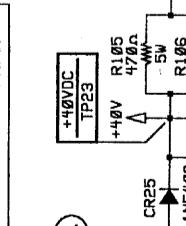
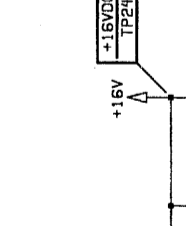
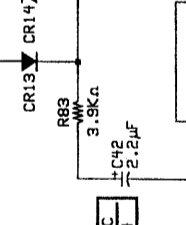
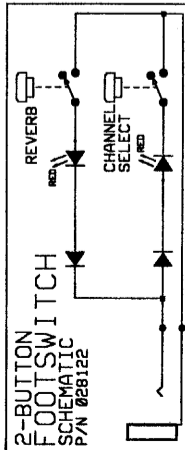
DATE: 05-DEC-95
DRAWN BY: SCOTT H. HARRIS
CHECKED BY: GARY L. HARRIS
APPROVED BY: GARY L. HARRIS
DATE: 05-DEC-95

SCALE: 1 OF 1
SHEET 1 OF 1

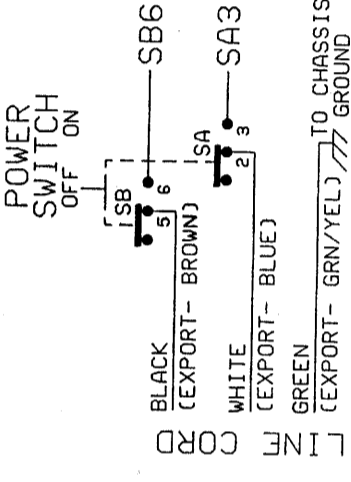
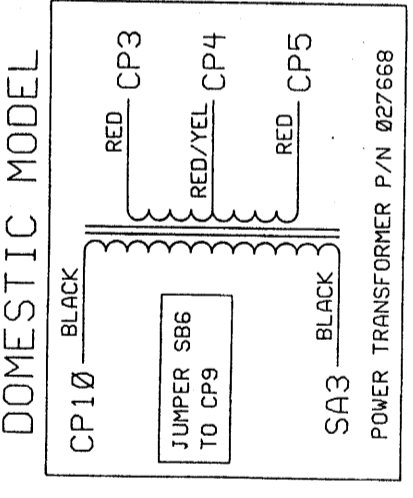
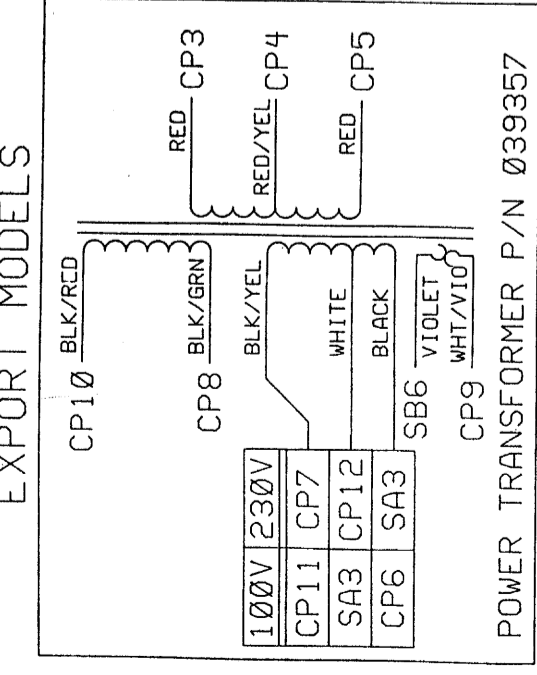
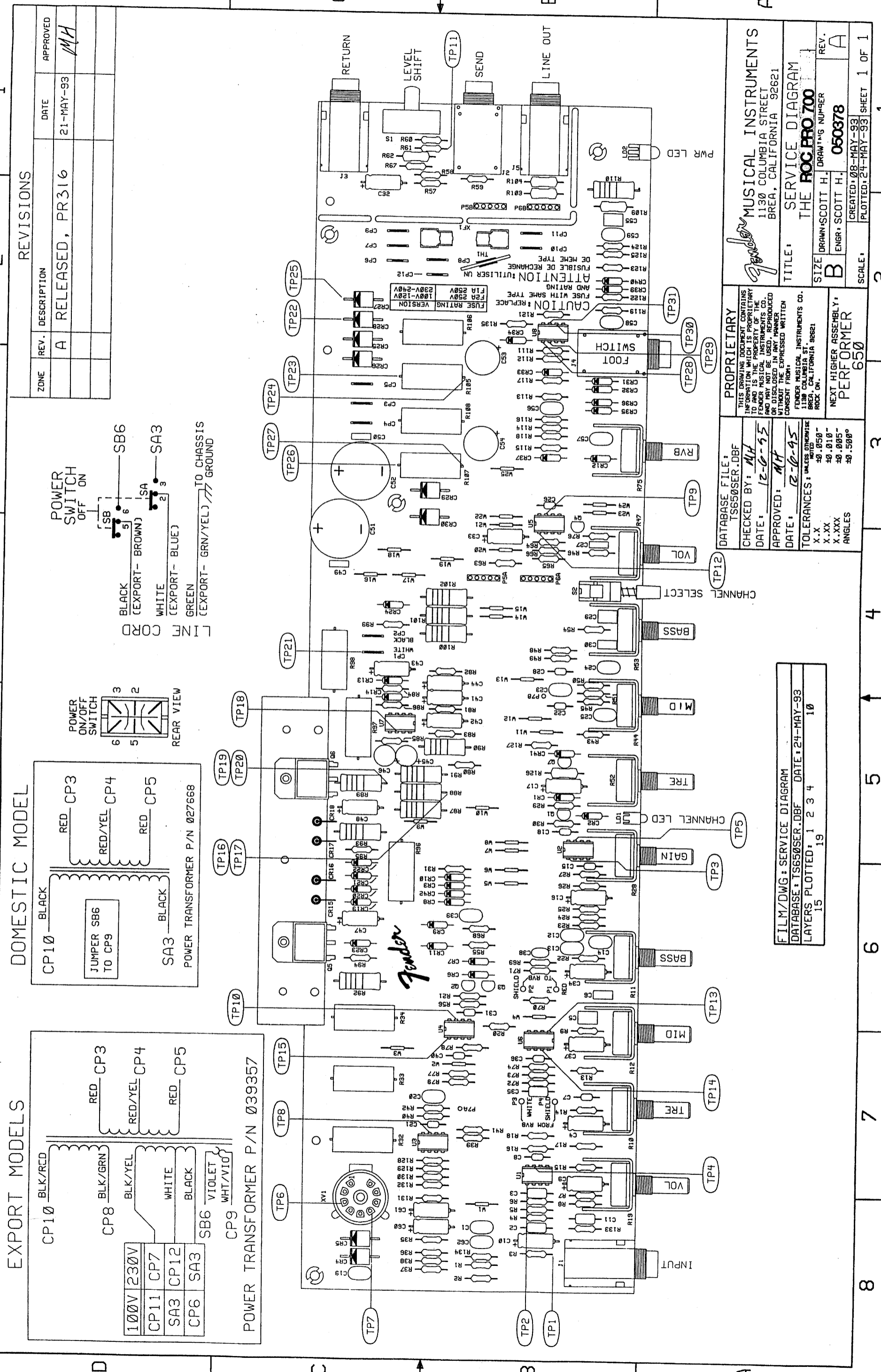
PROPRIETARY
THIS INFORMATION IS THE PROPERTY OF MUSICAL INSTRUMENTS, INC. AND IS NOT TO BE REPRODUCED OR TRANSMITTED IN ANY FORM OR BY ANY MEANS, WITHOUT THE EXPRESS WRITTEN PERMISSION OF MUSICAL INSTRUMENTS, INC.

DATE: 05-DEC-95
DRAWN BY: SCOTT H. HARRIS
CHECKED BY: GARY L. HARRIS
APPROVED BY: GARY L. HARRIS
DATE: 05-DEC-95

SCALE: 1 OF 1
SHEET 1 OF 1



8 7 6 5 4 3 2 1



REVISIONS

ZONE	REV.	DESCRIPTION	DATE	APPROVED
	A	RELEASED, PR316	21-MAY-93	MH

PROPRIETARY

THIS DRAWING DOCUMENT CONTAINS INFORMATION WHICH IS PROPRIETARY TO AND IS THE PROPERTY OF FENDER MUSICAL INSTRUMENTS CO. AND MAY NOT BE USED, REPRODUCED OR DISCLOSED IN ANY MANNER WITHOUT THE EXPRESSED WRITTEN CONSENT FROM:

FENDER MUSICAL INSTRUMENTS CO.
1130 COLUMBIA ST.
BREA, CALIFORNIA 92621

PERFORMER 650

NEXT HIGHER ASSEMBLY:

SIZE B DRAWN: SCOTT H. ENGR: SCOTT H. 050378 REV. A

TITLE: SERVICE DIAGRAM

THE **ROC PRO 700**

1130 COLUMBIA STREET
BREA, CALIFORNIA 92621

SCALE: 1

CREATED: 08-MAY-93 PLOTTED: 24-MAY-93 SHEET 1 OF 1

FILM/DWG: SERVICE DIAGRAM

DATE: 24-MAY-93

DATE: 15 19 10

LAYERS PLOTTED: 1 2 3 4

DATE: 24-MAY-93

DATE: 10

PROPRIETARY

THIS DRAWING DOCUMENT CONTAINS INFORMATION WHICH IS PROPRIETARY TO AND IS THE PROPERTY OF FENDER MUSICAL INSTRUMENTS CO. AND MAY NOT BE USED, REPRODUCED OR DISCLOSED IN ANY MANNER WITHOUT THE EXPRESSED WRITTEN CONSENT FROM:

FENDER MUSICAL INSTRUMENTS CO.
1130 COLUMBIA ST.
BREA, CALIFORNIA 92621

PERFORMER 650

NEXT HIGHER ASSEMBLY:

SIZE B DRAWN: SCOTT H. ENGR: SCOTT H. 050378 REV. A

TITLE: SERVICE DIAGRAM

THE **ROC PRO 700**

1130 COLUMBIA STREET
BREA, CALIFORNIA 92621

SCALE: 1

CREATED: 08-MAY-93 PLOTTED: 24-MAY-93 SHEET 1 OF 1

PROPRIETARY

THIS DRAWING DOCUMENT CONTAINS INFORMATION WHICH IS PROPRIETARY TO AND IS THE PROPERTY OF FENDER MUSICAL INSTRUMENTS CO. AND MAY NOT BE USED, REPRODUCED OR DISCLOSED IN ANY MANNER WITHOUT THE EXPRESSED WRITTEN CONSENT FROM:

FENDER MUSICAL INSTRUMENTS CO.
1130 COLUMBIA ST.
BREA, CALIFORNIA 92621

PERFORMER 650

NEXT HIGHER ASSEMBLY:

SIZE B DRAWN: SCOTT H. ENGR: SCOTT H. 050378 REV. A

TITLE: SERVICE DIAGRAM

THE **ROC PRO 700**

1130 COLUMBIA STREET
BREA, CALIFORNIA 92621

SCALE: 1

CREATED: 08-MAY-93 PLOTTED: 24-MAY-93 SHEET 1 OF 1

8 7 6 5 4 3 2 1