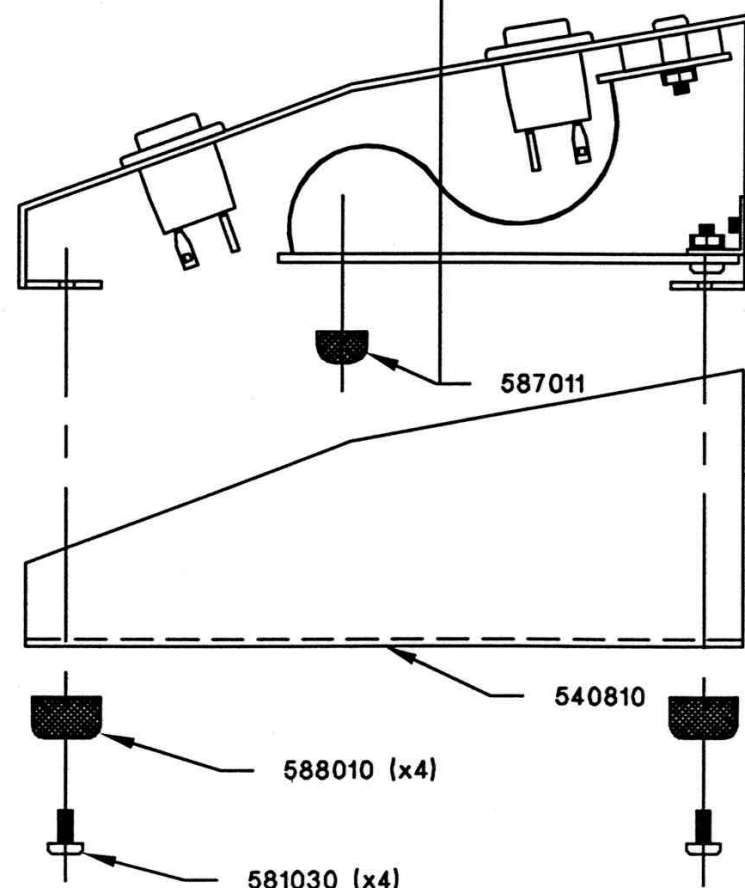
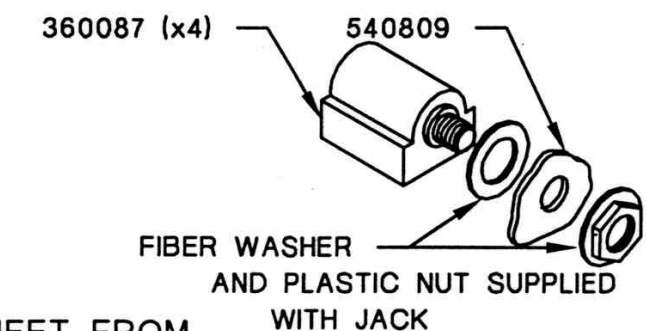
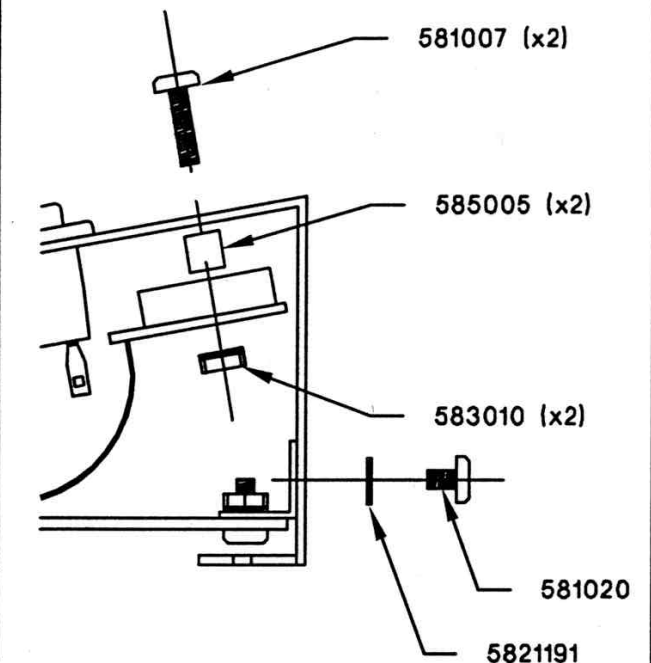
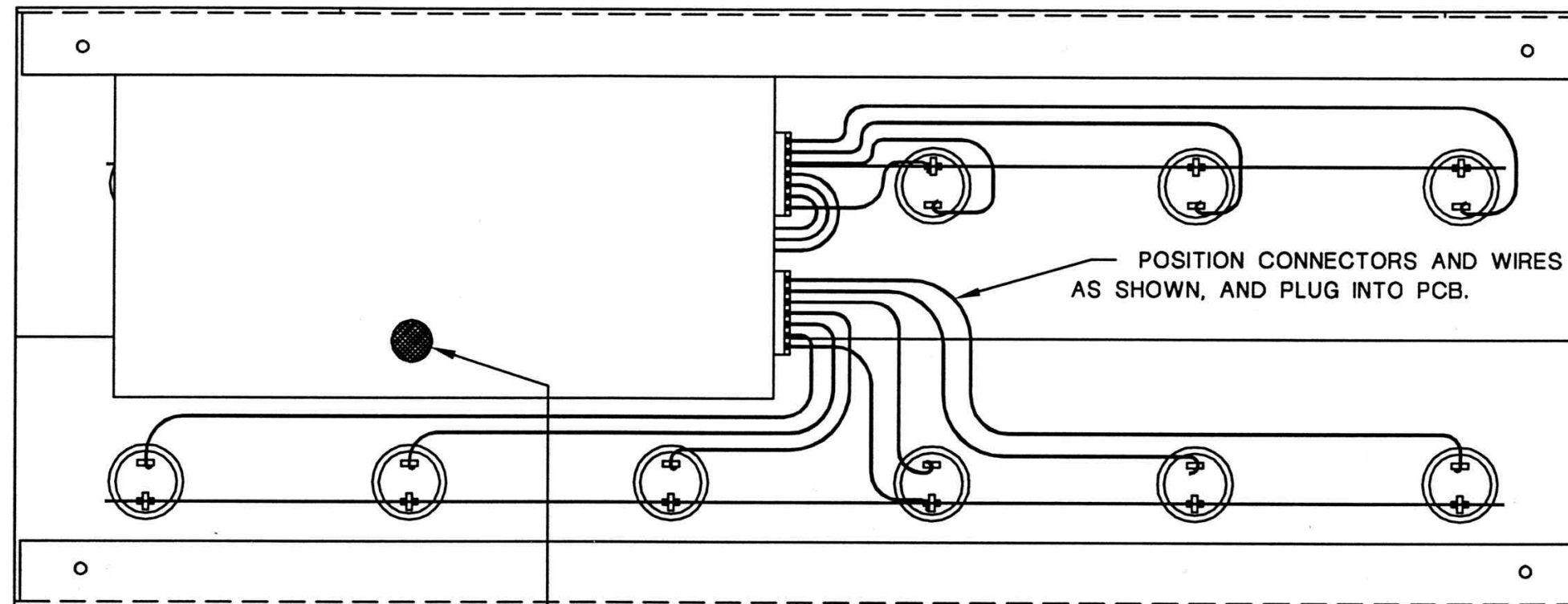


REVISION HISTORY			
REV.	DESCRIPTION	SIGNATURE	DATE
A	DRAWING RELEASE		10/28/93
B	INITIAL PRODUCTION CHGS		11/2/93
-	-		-
-	-		-



NOTES:

1. REMOVE THE PROTECTIVE PLASTIC SHEET FROM THE FRONT OF THE LED, AND INSTALL USING THE HARDWARE SHOWN.
2. MOUNT THE PCB INTO THE CHASSIS USING THE HARDWARE SHOWN FOR THE BRACKET AND THE JACKS.
3. PLUG THE IDS CONNECTORS ONTO THE PCB, AS SHOWN.
4. PLACE RUBBER BUMPER ON TH BOTTOM OF THE PCB.
5. MOUNT THE BOTTOM COVER WITH THE FEET AND HARDWARE SHOWN.

THIS DRAWING DOCUMENT CONTAINS INFORMATION WHICH IS PROPRIETARY TO AND THE PROPERTY OF ADA, INC. AND MAY NOT BE USED, REPRODUCED OR DISCLOSED IN ANY MANNER WITHOUT THE EXPRESSED CONSENT OF ADA, INC.

FILE NAME: A927B.DWG

CHECKED BY:

DATE:

APPROVED BY:

DATE:



SIGNAL PROCESSORS, INC.
420 LESSER STREET, OAKLAND, CA 94601

TITLE
MXC, FINAL ASSEMBLY
(800198, 800199)

DRAWN: D.WIRT

ENGR:

© COPYRIGHT 1993

SIZE

A

DRAWING NO.

927

DATE: 10/28/93

REV

B

SHEET 1 OF 1



<http://www.adadepot.com>