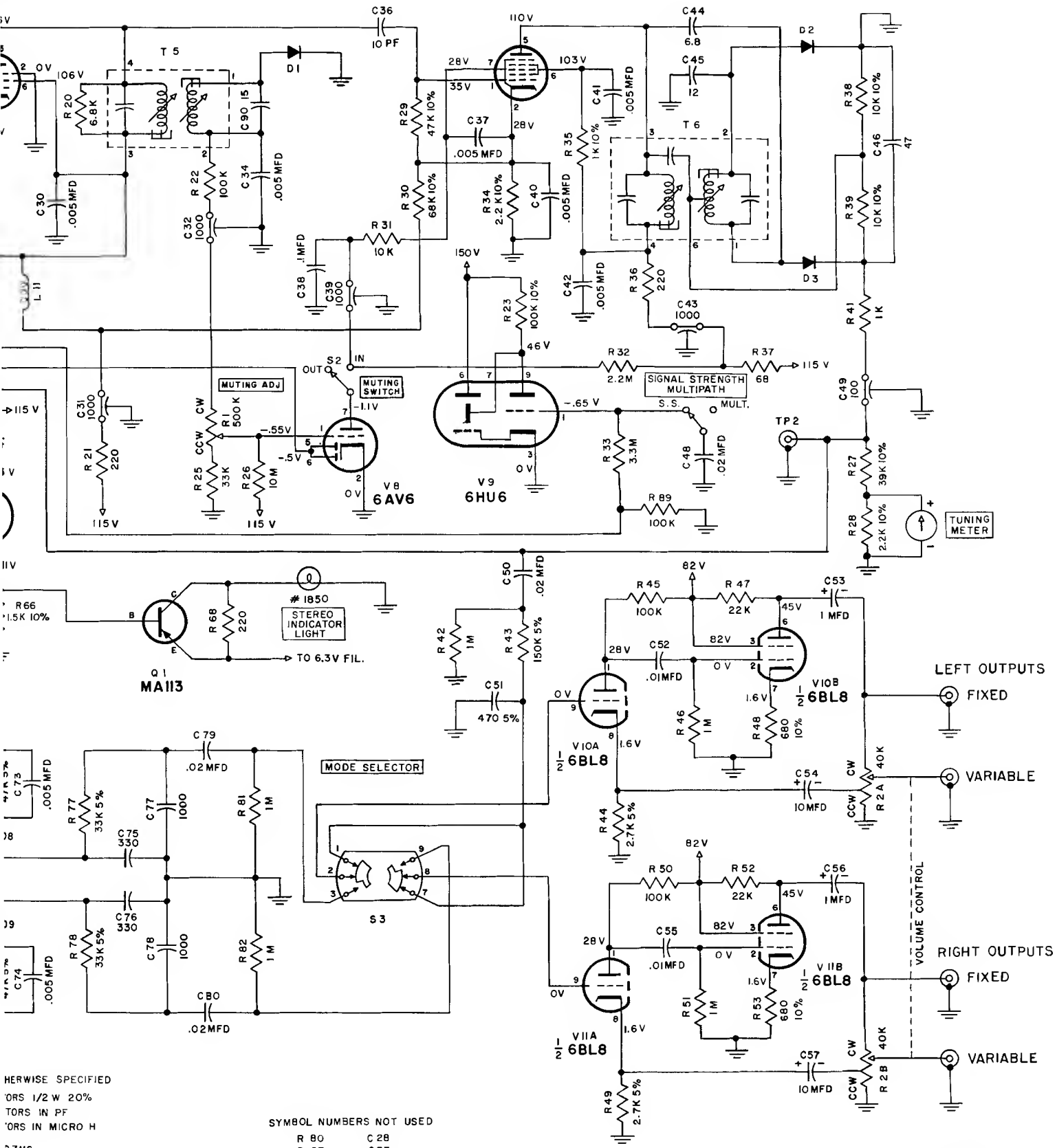


ALL VOLTAGES MEASURED UNDER FOLLOWING CONDITIONS:
 1 - USE OF 11 MEGOHMS INPUT IMPEDANCE VTVM VOLTMEETER.
 2 - ALL VOLTAGES $\pm 10\%$, WITH RESPECT TO GROUND.
 3 - A.C. INPUT AT 117 V 50-60 CPS.
 4 - NO SIGNAL AT ANTENNA AND OTHER INPUT TERMINALS.
 5 - FRONT PANEL CONTROLS AT

MODE SELECTOR - MONO.
 VOLUME CONTROL - MAX.
 MUTING - OFF

UNLESS OTHERWISE SPECIFIED
 ALL RESISTORS 1/2 W 20%
 ALL CAPACITORS IN PF
 ALL INDUCTORS IN MICRO H
 FM, IF: 10.7 MC



HERWISE SPECIFIED
 ORS 1/2 W 20%
 TORS IN PF
 TORS IN MICRO H
 0.7MC

SYMBOL NUMBERS NOT USED
 R 80 C 28
 R 87 C 33
 C 35

FOR SERIAL NUMBERS 22T04 AND ABOVE

MATERIAL	TITLE	PART NO
FINISH	SCHEMATIC, MR67	USED ON
TOLERANCES - Unless otherwise specified: * 1/2" Angles = 3/16 Fractions. * .005 Decimals	SCALE	DATE
	DRAWN BY VG	1.4, 63
	CHECKED BB	APPD SAC
	DWG NO.	REV
	SC123-176	

McIntosh

MODEL NUMBER: MR 65B, MX 110, MR 67

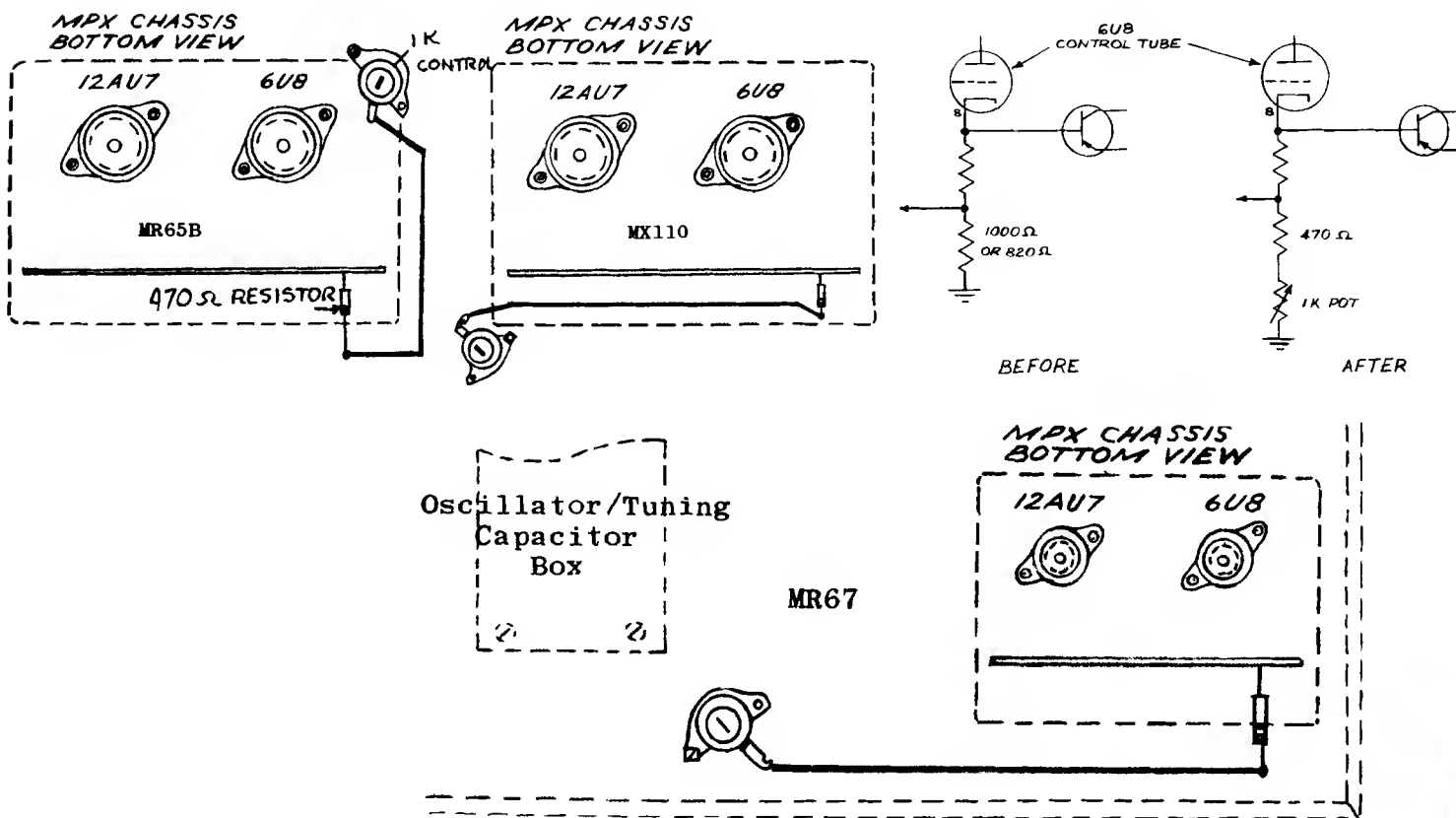
DATE: MARCH 1965

MODIFICATION: To allow adjust control for instant correction of tube and circuit variations. This will insure proper MPX indicator light operation.

PROCEDURE: This modification will allow you to adjust the MPX light on all tuners with ease. The reason for this modification is to allow simple field adjustment of varying tube and circuit characteristic.

MR 65B
and
MX 110 tuner/preamp.

1. Install 1K control (WC 807) to MPX chassis. Use the existing MPX chassis mounting screw.
2. Remove the 820 ohm or 1K ohm resistor. (cathode circuit of 6U8)
3. Solder one end of 470 ohm resistor to bottom hole nearest the chassis.
4. Connect a lead from other end of the resistor to the terminal lug on a 1K control.



1. Install 1K control to the tuner chassis under the existing screw as shown in the diagram.

2. Follow steps 2, 3, 4, as above.

TO ADJUST THE CONTROL: Tune to point of no station. Place mute to "IN" position. Turn control from full clockwise position to a point where the light just goes out.