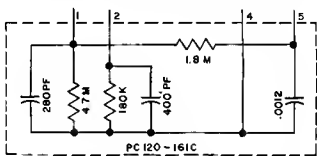


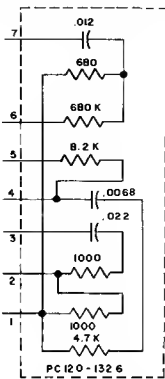
NOTES

1. UNITS WITH SERIAL NUMBERS BELOW USE TWO PC120-161C MODULES INSTEAD OF ONE PC144-20B. THE PC120-161C CIRCUIT IS AS ILLUSTRATED BELOW.

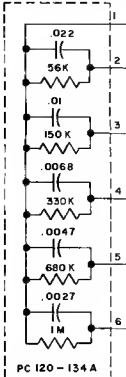


2. UNITS WITH SERIAL NUMBERS BELOW USE TWO PC120-133B INSTEAD OF TWO PC144-202. MODULES. THEY BOTH CONNECT IN THE SAME MANNER.

3. UNITS WITH SERIAL NUMBERS BELOW USE TWO PC120-132B INSTEAD OF TWO PC144-205. MODULES. THE PC120-132B CIRCUIT IS AS ILLUSTRATED BELOW.

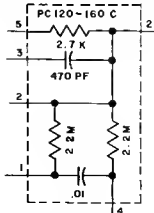


4. UNITS WITH SERIAL NUMBERS BELOW USE TWO PC120-134A INSTEAD OF TWO PC144-204. MODULES. THE PC120-134A CIRCUIT IS AS ILLUSTRATED BELOW.



5. UNITS WITH SERIAL NUMBERS BELOW USE TWO PC120-138 INSTEAD OF TWO PC144-208. MODULES. THEY BOTH CONNECT IN THE SAME MANNER.

6. UNITS WITH SERIAL NUMBERS BELOW USE TWO PC120-160C INSTEAD OF TWO PC144-207. MODULES. THE PC120-160C CIRCUIT IS AS ILLUSTRATED BELOW.



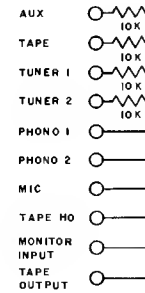
7. RESISTORS MARKED * ARE 1/4 W 20%.

8. UNLESS OTHERWISE SPECIFIED ALL RESISTORS ARE IN OHMS 1/2 W 10%. ALL CAPACITORS ARE IN MFD

9. ALL VOLTAGES MEASURED UNDER THE FOLLOWING CONDITIONS.
 USE OF 11 MEGOHMS INPUT IMPEDANCE VTVM
 ALL VOLTAGES ±10% WITH RESPECT TO GROUND
 AC INPUT AT 117 V. 50-60 CPS
 FRONT PANEL CONTROLS AT
 BALANCE - FLAT
 INPUT SELECTOR - AUX
 MODE SELECTOR - STEREO
 VOLUME - MAX
 TONE CONTROLS - FLAT
 COMP - RIA A
 TAPE - NORMAL
 TAPE JACKS - RECORD
 FILTERS - FLAT
 LOUDEST - NORMAL

LEFT CHANNEL

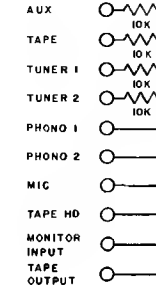
LEFT CHANNEL INPUTS



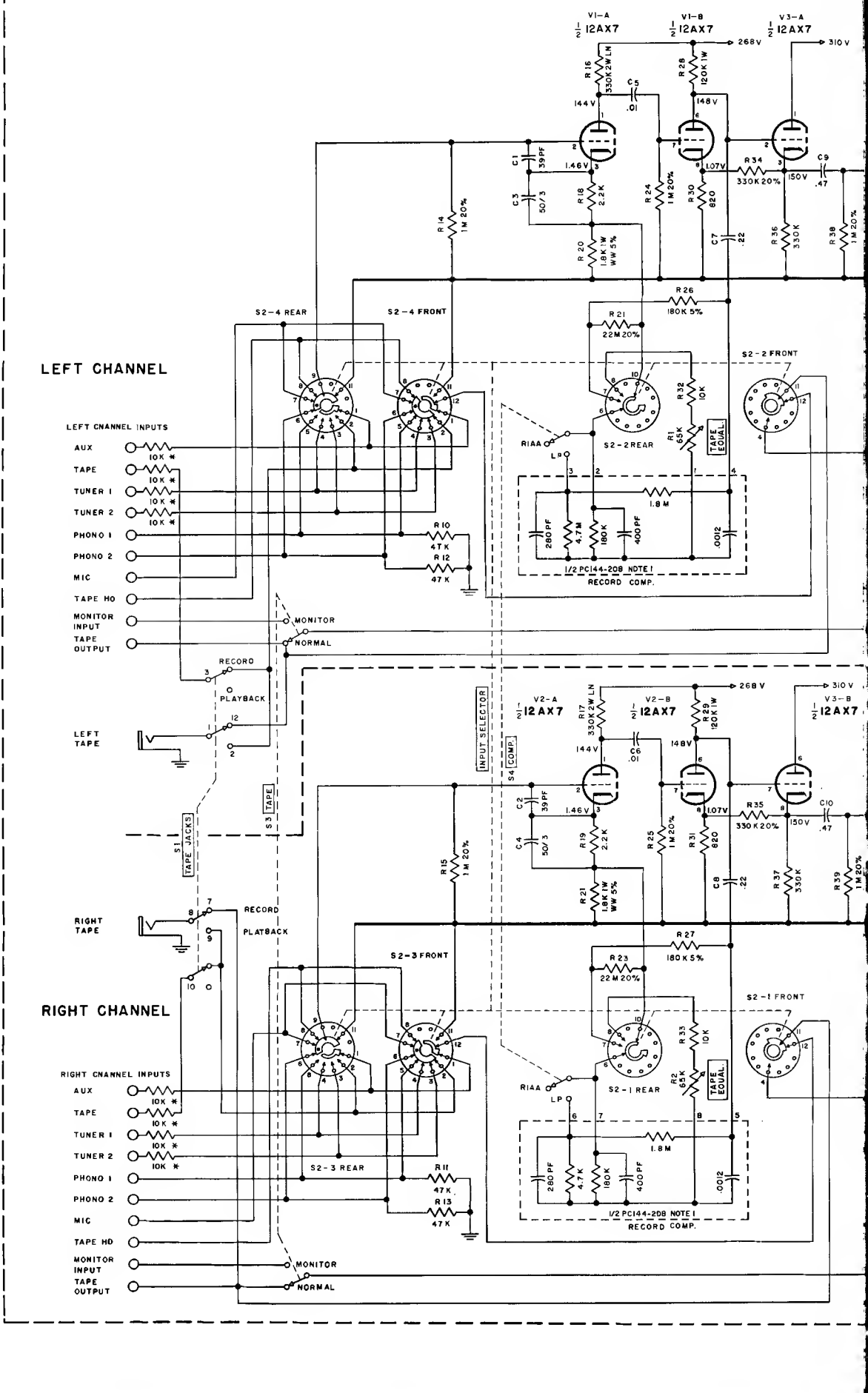
LEFT TAPE

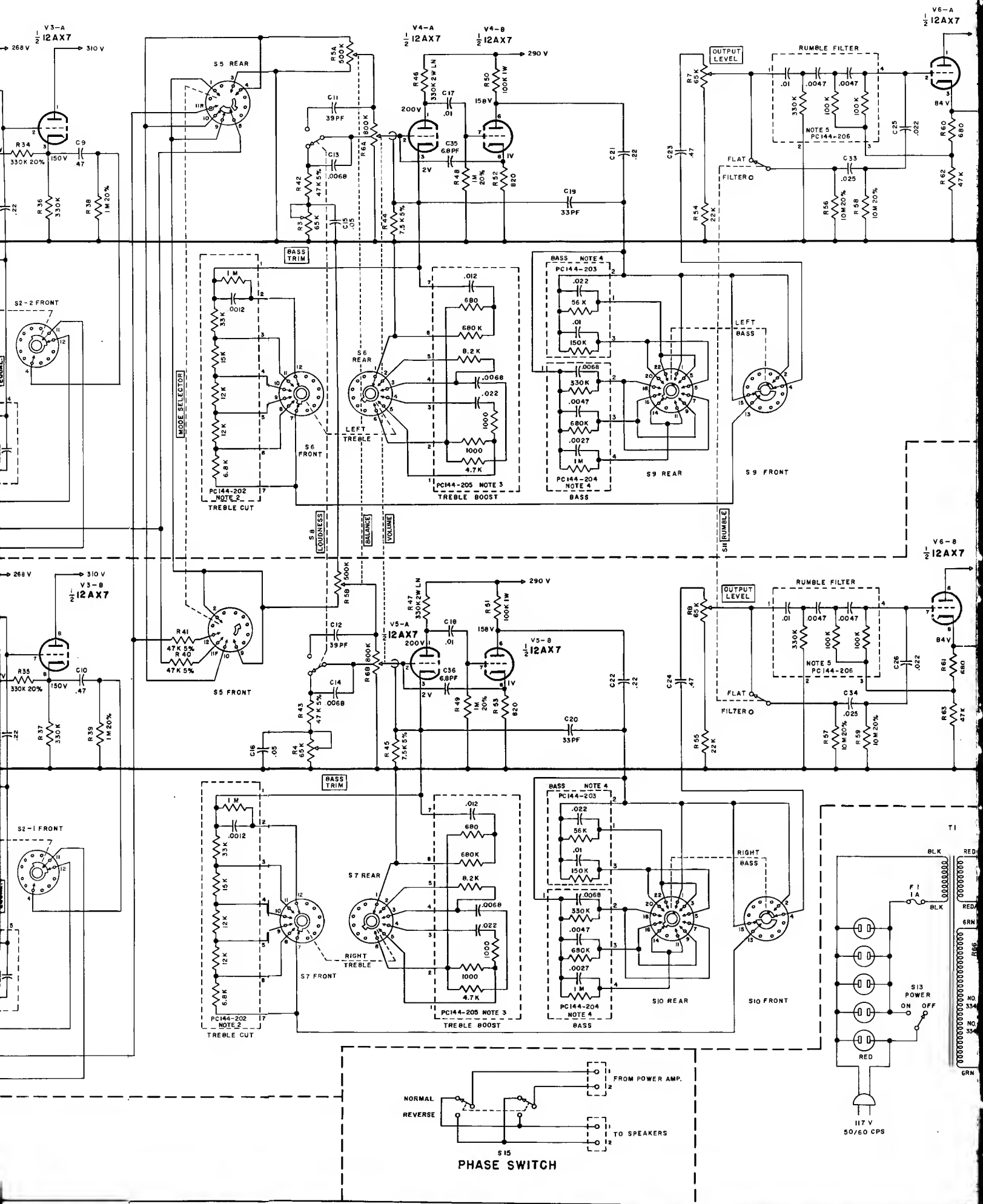
RIGHT CHANNEL

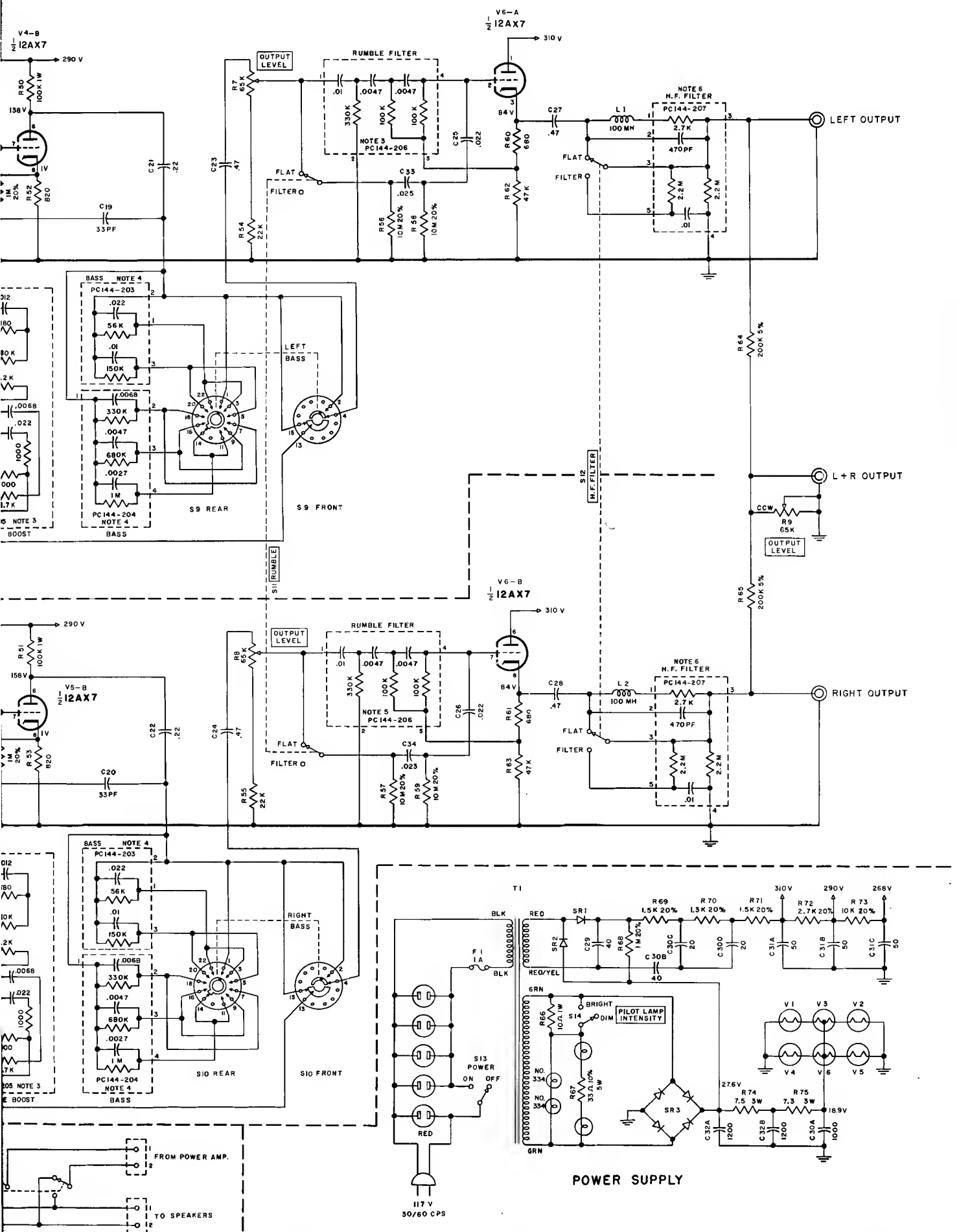
RIGHT CHANNEL INPUTS



RIGHT TAPE







POWER SUPPLY

LAST R - T5
LAST C - 36

DATE	REV	BY	CHKD	APP'D	SCALE	DATE	NO.	REV
						6.29.63		
TITLE: SCHEMATIC, C22 DRAWN BY: V6 CHECKED: BB APPROVED: SPC					PART NO.: SC144E216 EMP. NO.: DATE: 6.29.63 NO. OF SHEETS: 1 OF TOTAL SHEETS: 1			

McIntosh

MODEL NUMBER: C 8, C 11, C 22

DATE: APRIL 1965

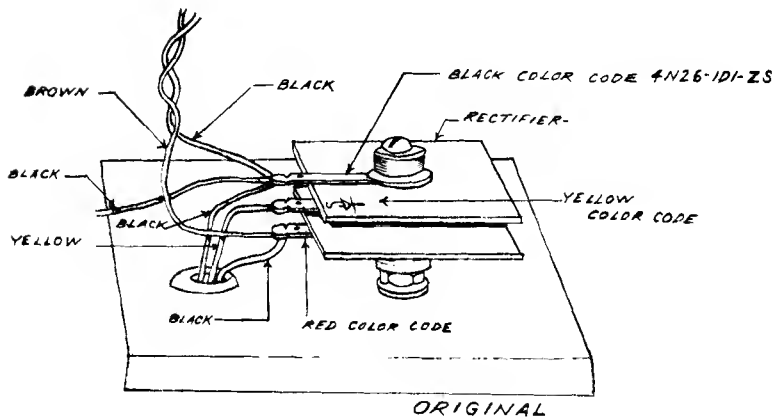
MODIFICATION: Replace the selenium rectifier with silicon rectifiers. These silicon rectifiers have much longer life.

DESCRIPTION: The original selenium rectifier in the C 8 is replaced by two (2) silicon rectifiers; the original selenium rectifier in the C 11 and C 22 is replaced by four (4) silicon rectifiers. The rectifiers are McIntosh part number 070-014, or any 50 PIV 750 MA rectifiers.

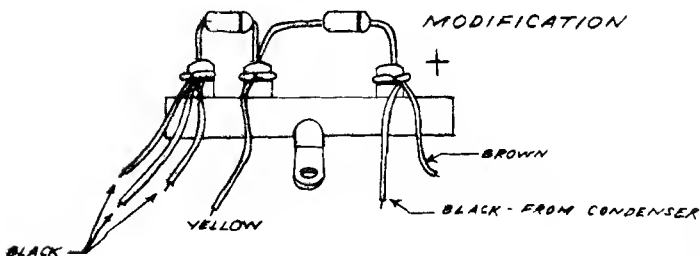
PROCEDURE: The selenium rectifier is replaced by a terminal strip and the new silicon rectifiers are installed as shown in the following diagrams.

NOTE THAT TERMINAL STRIPS ARE REQUIRED

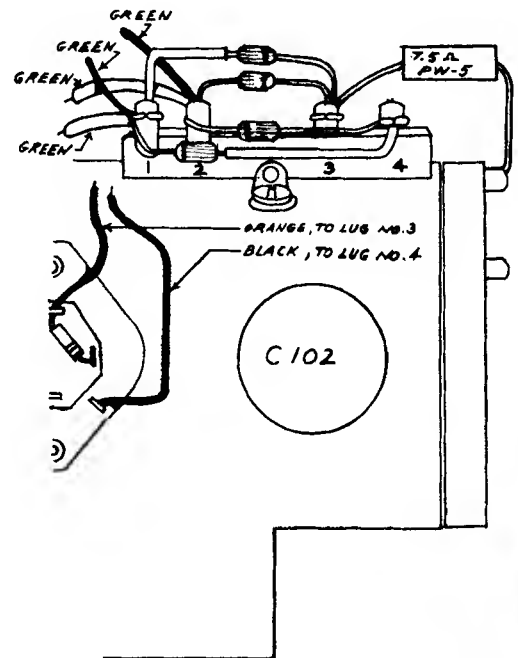
C 8



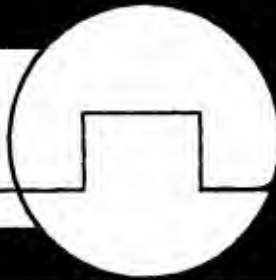
RECTIFIERS



C 11, C 22



McIntosh



DATE: NOVEMBER, 1965

MODEL NUMBER: C 22

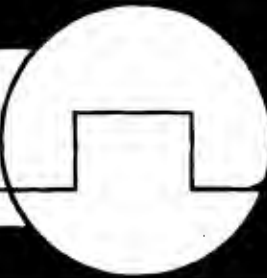
MODIFICATION: Replacement information for circuit modules.

PROCEDURE: C 22's built before 1965 used circuit modules made by Erie Electronics. In 1965 we changed to Sprague Electric Co. The Sprague modules are electrically equivalent to the Erie modules but differ mechanically. The newer Sprague modules are used for replacement when servicing early C 22 units.

The attached schematic shows the lead connections for both the Erie modules (PC 120-161, PC 120-133, PC 120-132, PC 120-134, PC 120-138, and PC 120-160) and the Sprague modules (130-015, 130-016, 130-017, 130-018, 130-019, 130-020, and 130-021.) Follow the schematic to replace an Erie module with a Sprague module.

NOTE: The Sprague 130-015 replaces 2 each PC 120-161 units, and a Sprague 130-018 plus a 130-019 replaces one PC 120-134.

McIntosh



PILOT LAMP REPLACEMENT

To insure long life of festoon pilot lamps, always replace them in pairs in the C22. The two lamps are connected in series. As the lamps age their resistance increases. If only one lamp is replaced the older lamp will have higher resistance than the new lamp. This will cause more voltage to be present across the older lamp. The higher voltage will cause the older lamp to burn out more quickly than it otherwise would.

McIntosh festoon pilot lamps are designated part number 058-011. Specially-selected lamps are available for the C22. When ordering lamps for the C22, please request by part number "058-011 GREEN DOT". Use only the "GREEN DOT" lamp in the C22. Do not use them in any other product.

Al Hyle, Service Manager