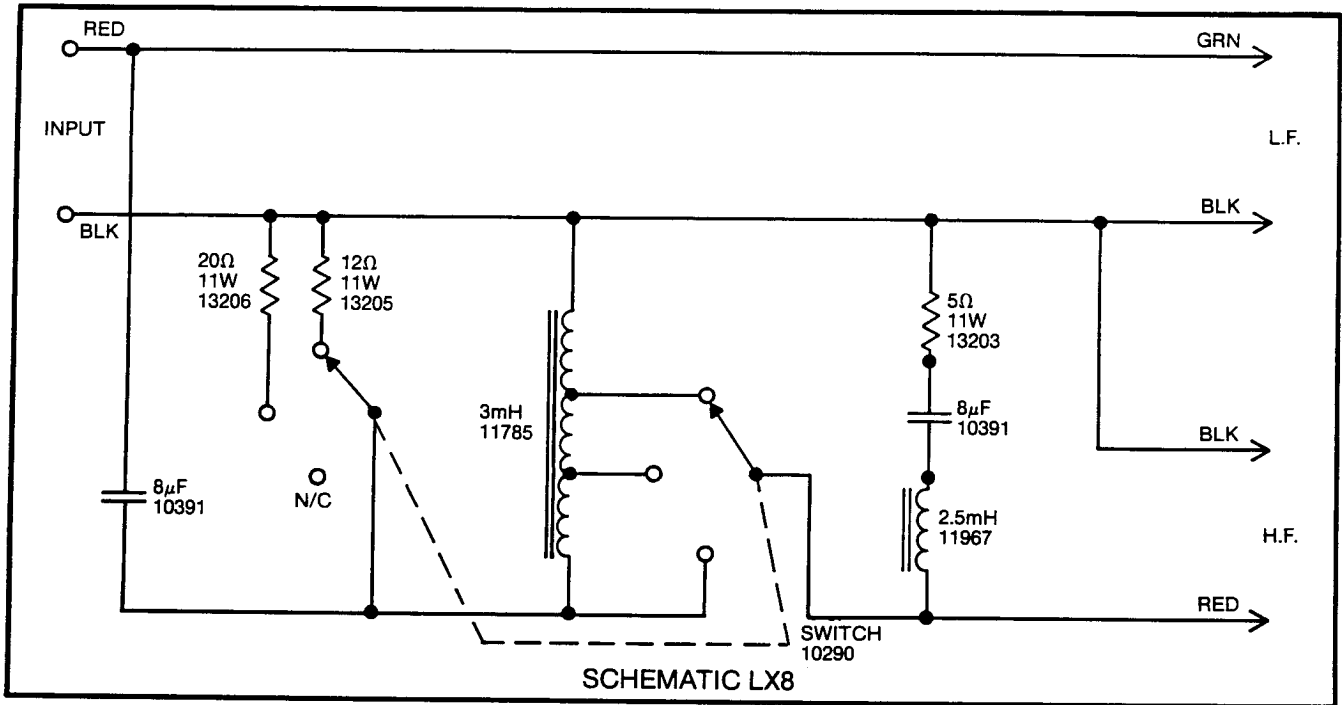


Technical Manual

S56 Dorian



SYSTEM COMPONENTS:

LOW FREQUENCY DRIVER:

LE14A	
Cone Kit:	C8RLE14A
Nom. Impedance:	8 Ohm
Dynamic Test Input V:	8
Sweep Frequency Hz:	30-1200
D.C. Resistance Ohms:	5.9 min/7.1 max
Gap Gauge:	.057"
Notes:	Aquaplas on front and back of cone.

If Not Serviceable, Replace With:	LE14H-1
Visual Change:	Yes
Baffle Modification:	No
Exact Acoustic Replacement:	No. Slightly different.
	Replace both units in a stereo pair.

Additional Parts Currently Available*:

Dome:	50201
Mounting Gasket:	20253
Trim Gasket:	21811

HIGH FREQUENCY DRIVER:

Diaphragm Kit:	D8RLE20
----------------	---------

HIGH FREQUENCY DRIVER (Cont'd)

Nom. Impedance:	8 Ohm
Dynamic Test Input V:	6
Sweep Frequency Hz:	1000-6000
D.C. Resistance Ohms:	3.7 min/4.2 max
Gap Gauge:	.029"
Notes:	Test With Network
If Not Serviceable, Replace With:	035TiA
Visual Change:	Yes
Baffle Modification:	No
Exact Acoustic Replacement:	No. Use as last resort. Replace both units in a stereo pair.
Additional Parts Currently Available*:	
Trim Ring:	21600

SYSTEM SPECIFICATIONS:

Nom. Impedance:	8 ohm
Power Capacity:	35 Watts Continuous Program
Crossover Frequency:	2000 Hz
Sensitivity:	80dB (1 Watt @ 15 Feet)
Enclosure Dim:	24½" x 17½" x 12¾" D 622mm x 444mm x 314mm

*Other parts may also be available. Check with JBL for details.