

JBL S3



SPECIFICATIONS

ACOUSTIC & ELECTRICAL SPECIFICATIONS:

- Nominal Impedance: 4 ohm
- Power Rating: 10W to 100W
- Frequency Response: 125 Hz to 22 kHz
- Sensitivity: 86 dB SPL*
- Crossover Frequencies: 3 kHz

SYSTEM COMPONENTS:

- Cabinet: N/A
- Grille: 70196

*1 Watt (2.83 V RMS) @ 1 Meter

SYSTEM COMPONENTS: (cont'd)

- Low Frequency Transducer: 134mm (5.25 in.) High Polymer Laminate (305G-3A)
- High Frequency Transducer: 25mm (1 in.) Pure Titanium Dome (029Ti)
- Crossover Network: 70547

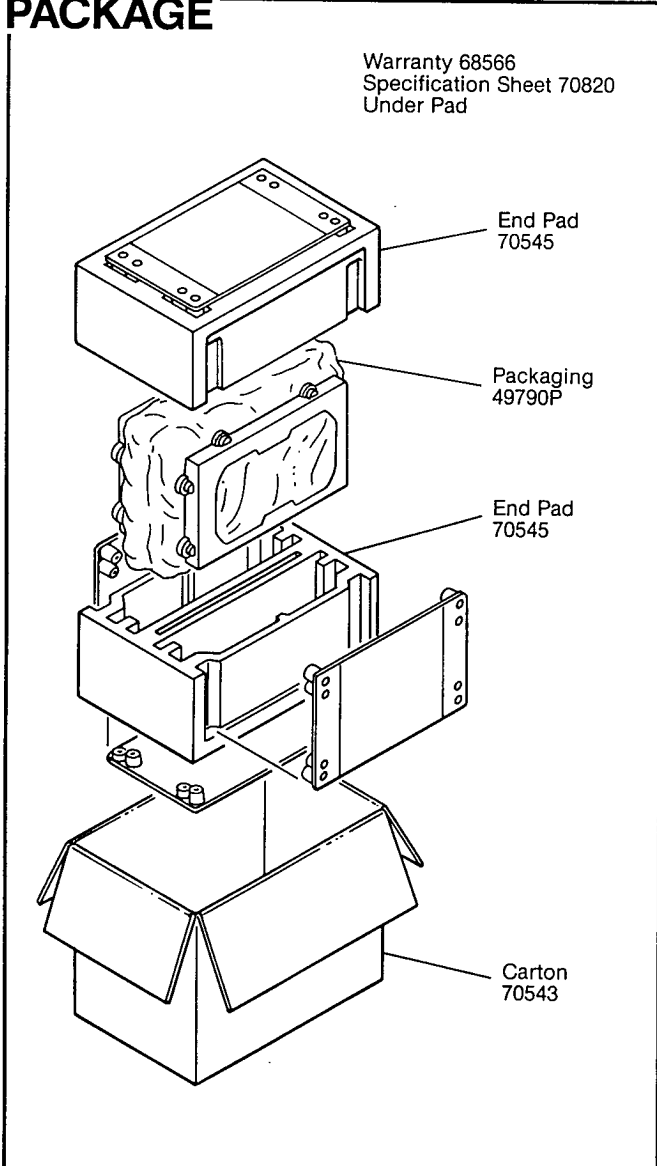
PHYSICAL SPECIFICATIONS:

- Enclosure Dimensions: 266mm x 185mm x 92mm D (10.5 x 7.25 x 3.62 in. D)
- Shipping Weight: 14 lbs.

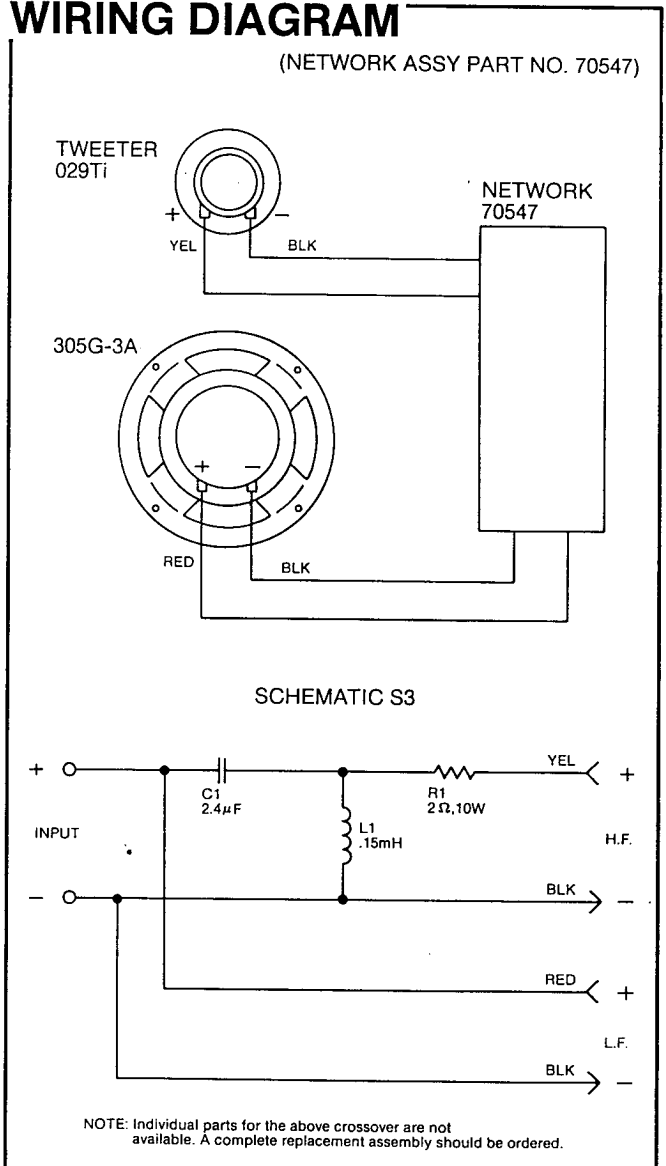
WARRANTY INFORMATION:

- Refer to the Warranty Statement packed with each product.

PACKAGE



WIRING DIAGRAM



COMPONENT EXPLODED VIEW

