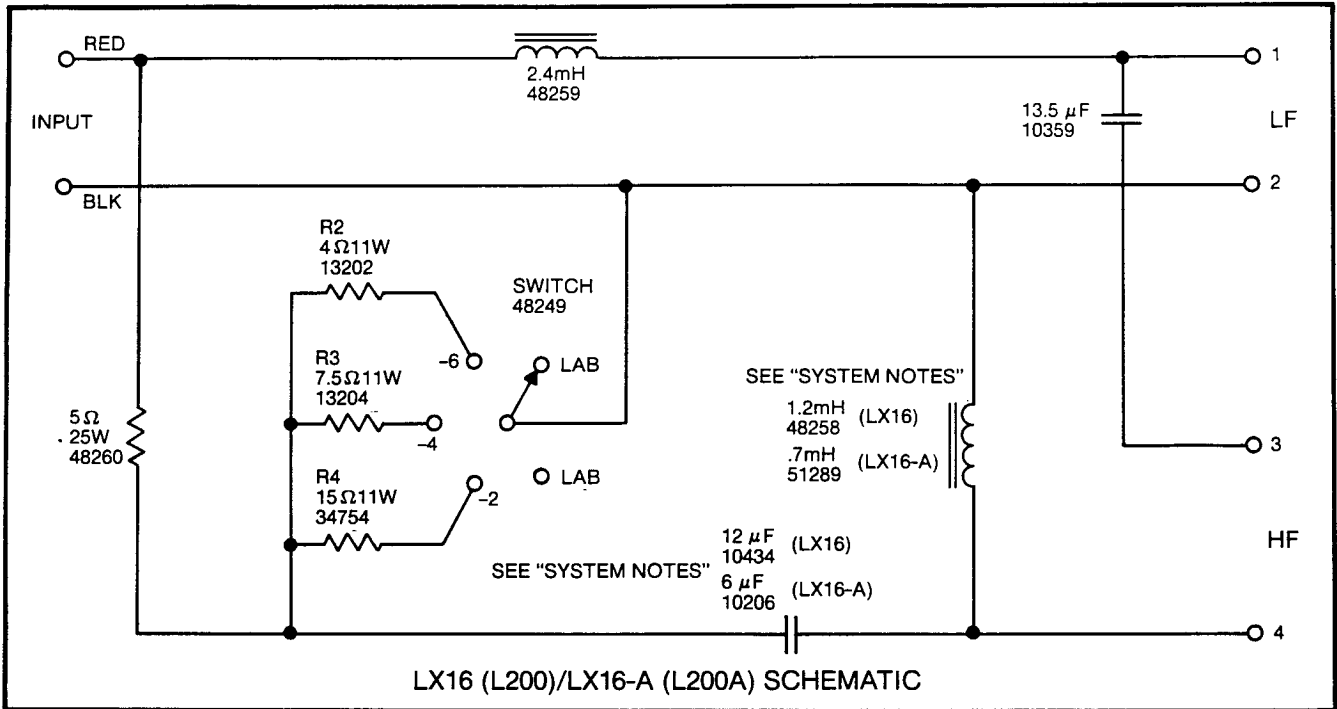


# L200/L200A Studio Master



**SYSTEM COMPONENTS:**

- LOW FREQUENCY DRIVER:**
- LE15B
  - Cone Kit: C8RLE15B
  - Nom. Impedance: 8 Ohm
  - Dynamic Test Input V: 8
  - Sweep Frequency Hz: 20-1200
  - D.C. Resistance Ohms: 3.1 min/3.9 max
  - Gap Gauge: .057"
  - Notes:
  - If Not Serviceable, Replace With: 2234H
  - Visual Change: Yes
  - Baffle Modification: No
  - Exact Acoustic Replacement: No. Use as last resort.  
Replace both units in a stereo pair.
  - Additional Parts Currently Available\*:
  - Dome: 21514
  - Mounting Gasket: 34499
  - Trim Gasket: 21058
- HIGH FREQUENCY DRIVER:**
- LE85
  - Diaphragm Kit: D16R2421
  - Nom. Impedance: 16 Ohm
  - Dynamic Test Input V: 3.5
  - Sweep Frequency Hz: 550-1200
  - D.C. Resistance Ohms: 5.9 min/7.0 max

**HIGH FREQUENCY DRIVER (Cont'd)**

- Gap Gauge: .031"
- Notes:
- If Not Serviceable, Replace With: 2425J
- Visual Change: Yes
- Baffle Modification: No
- Exact Acoustic Replacement: No. Slightly different.  
Replace both units in a stereo pair.
- Additional Parts Currently Available\*:
- Horn: H91 (Lens L91 No Longer Available.)

**SYSTEM SPECIFICATIONS:**

- Nom. Impedance: 8 Ohm
- Power Capacity: 100 Watts Continuous Program
- Crossover Frequency: 1200 Hz
- Sensitivity: 80dB (1 Watt @ 15 Feet)
- Enclosure Dim: 32-3/4" x 23-7/8" x 21-1/4" D  
83cm x 61cm x 54cm
- Shipping Weight: 125 lbs. - 57 kg.
- Additional Parts Currently Available\*:
- Grill: G200-Cloth

**SYSTEM NOTES:**

It is suggested that the LX16 crossover be converted to LX16-A configuration to provide additional high frequency driver protection when used in the L200 System.

\*Other parts may also be available. Check with JBL for details.