

Technical Manual



JBL4674A

SPECIFICATIONS

ACOUSTIC & ELECTRICAL SPECIFICATIONS:

- Nominal Impedance: 8 ohm
- Power Rating: Continuous Pink Noise: 150W
Continuous Program: 300W
- Frequency Response: 45 Hz to 20 kHz
- Sensitivity: 103 dB SPL*
- Crossover Frequencies: 500 Hz

SYSTEM COMPONENTS:

- Cabinet: C4560BKA
- Grille: N/A
- Low Frequency Transducer: 380mm (15 in.) Cone Transducer (2225H)

*1 Watt (2.83 V RMS) @ 1 Meter

SYSTEM COMPONENTS: (cont'd)

- High Frequency Transducer: 100mm (4 in.) Pure Titanium Diaphragm (2445J)
- Crossover Network: 3115A

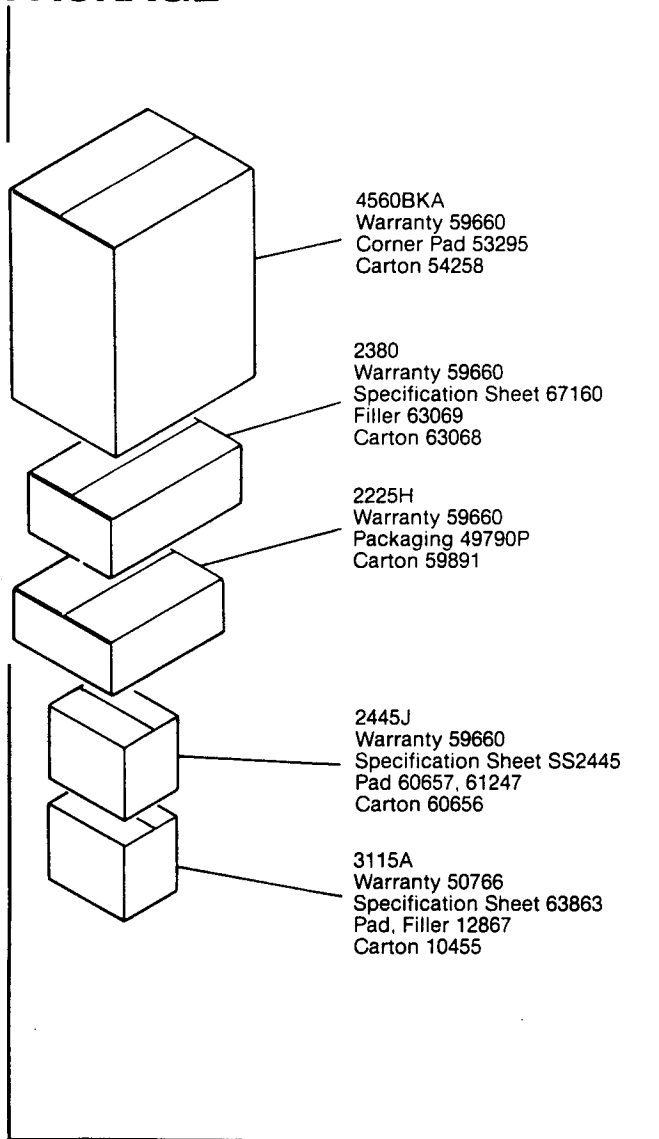
PHYSICAL SPECIFICATIONS:

- Enclosure Dimensions: 1194mm x 762mm x 606mm D (47.0 x 30.0 x 23.87 in. D)
- Shipping Weight: 170 lbs.

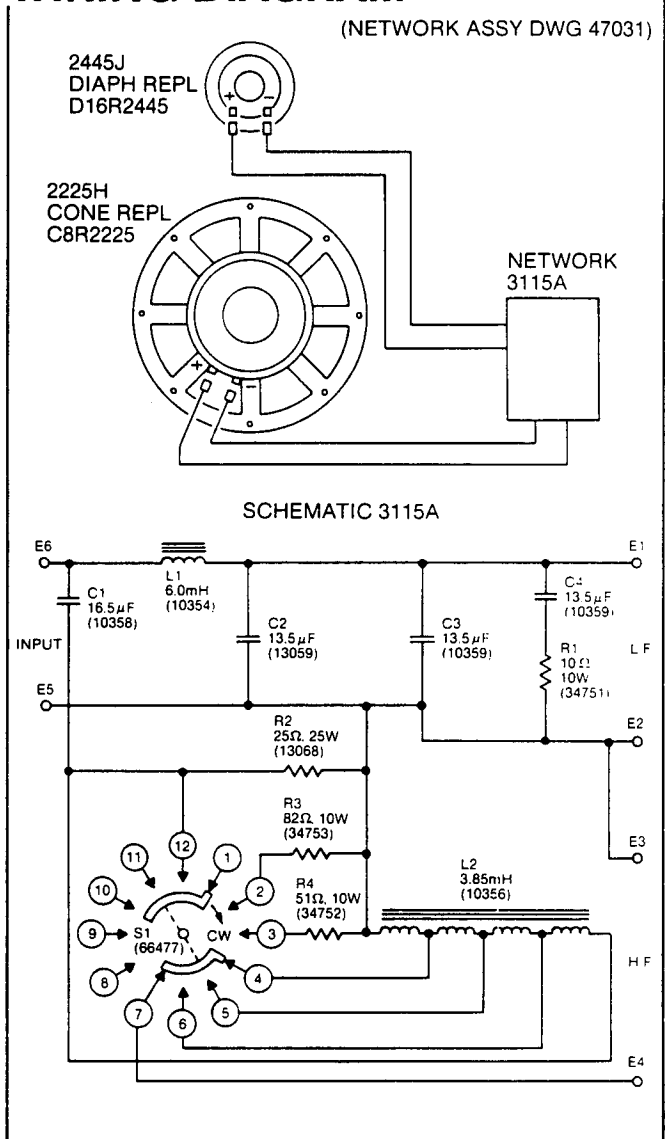
WARRANTY INFORMATION:

- Refer to the Warranty Statement packed with each product.

PACKAGE



WIRING DIAGRAM



JBL4674A

COMPONENT EXPLODED VIEW

Horn 2380A
64889

Bolt (Ref)

Speaker High Freq
2445J
Diaph Repl
D16R2445
Use Mounting Hardware
Included With
Installation Kit 57536

Network 3115A
47031
Use Mounting Hardware
Included With
Installation Kit 55343

Screw
Ref

Support 2508
60851
Use Mounting Hardware
Included With Unit

Cabinet 4560BKA
57992
(Not For Sale)

Screw
22372

Cover
65244

Cover
39895

Screw
22372

Screw
(Ref)

Gasket, Vinyl
34499

Speaker Low Freq
2225H
Cone Repl
C8R2225
Use Mounting Hardware
Included With
Installation Kit 55340

JBL4674A

